



HAWAIIAN PHILATELIC SOCIETY

ORGANIZED 1911



Affiliate
#136

P.O. Box 10115, Honolulu, Hawaii, 96816-0115 USA

EMAIL - hphilsoc@gmail.com

March 2017

President: Wayne T. Yakuma; First Vice-President: Glenn Yokoyama; Second Vice-President: Kay Kimura; Secretary: Vacant; Treasurer: Jerry C. Coiner; Auctioneer: Ben Gale; APS Representative: Phillip C. Mendel (pro tem); Po'Oleka O Hawaii Editor: Gregory J. Chang; Membership Chair: Gannon Sugimura

The February 13, 2017 meeting of the Hawaiian Philatelic Society was called to order at 7:40pm. There were eight members and one guest present. The following items were considered during the business meeting. President Yakuma advised HPS had received a check for \$1,338.70 as final settlement of auction lots sent to Harmer Schau Galleries, Inc. The Treasurer reported current cash flow is stable, and he transferred \$5,000 from the checking (cash) account into a 5-year CD. Both the March 2017 HPS Bulletin and auction are being prepared and should be mailed/emailed to members the week of 20 February. The July 2016 Po'oleka has been printed and mailed to US members. Foreign and gratis mailings will follow. The board has voted to implement new expertization rates effective April 1 (see Page 2). Under old business, participation by HPS at WESTPEX could be greatly expanded if some mainland members volunteered to assist in manning an HPS booth (see Page 2). Members from Hawaii are planning to attend, and help from other members is needed for the HPS information booth and informal event. The business meeting was adjourned at 8:00pm, followed by the February called auction.

CALENDAR OF FUTURE 2017 EVENTS

February 24-26	Hawaii Collectors Expo	Neal Blaisdell Center	
March 3-5	APS Ameristamp	Reno, Nevada	
March 6	HPS Executive Board Meeting	Kahala Nui Media Room	2-4:00 PM
March 13	HPS Monthly Meeting	St. Louis Alumni Association	7:30-9:00 PM
March 19	Spring Wiki Wiki Show	Neal Blaisdell Center	10:30am-4:30pm
April 3	HPS Executive Board Meeting	Zippy's Makiki	2-4:00 PM
April 10	HPS Monthly Meeting	St. Louis Alumni Association	7:30-9:00PM
April 28-30	WESTPEX	Burlingame, CA	
May 8	HPS Executive Board Meeting	Zippy's Makiki	2-4:00 PM
May 15	HPS Monthly Meeting	St. Louis Alumni Association	7:30-9:00PM

Attention Members: Any HPS Auction bids received after midnight (24:00 Hawaii Standard Time) on the Saturday preceding the Monday HPS meeting will not be recorded.

Further, telephone bids are not accepted.

LOT#	* / O	DESCRIPTIONS: (####) = Vendor Code; (*) = Unused; (O) = Used; (**) = Unused /Never Hinged; (OG) = Original Gum	CAT YEAR	CAT or RETAIL	UPSET
UNITED STATES					
0301	O	#24 F-Vfine; New York cds type V (PRL/717)	2015	\$40.00	\$25.00
0302	O	#69 AVG; Crease (PRL/715]	2015	\$100.00	\$10.00
0303	O	#179 (3) Fine; Diff. shades, Missing perfs on right stamp (BAH/716)	2014	\$80.00	\$10.00
0304	*	#200p5 VFine; Pair, NG, Natural inclusion on right stamp (PRB/715)	2015	\$60.00	\$20.00
0305	**	#295 VFine (PRL/717)	2015	\$40.00	\$25.00
0306	*	#297 VFine; LH (PRL/715)	2015	\$75.00	\$40.00
0307	**	#298 VFine; HPS Cert for Blk of 4 (PRL/715)	2015	\$240.00	\$120.00
0308	**/*	#324//#717 F-Vfine; #367,#618,#682 NH, others LH or HR (BAH/716)	2014	\$61.40	\$7.00
0309	**	#367 VFine (PRL/715)	2015	\$10.50	\$7.00
0310	O	#395 AVG; Short perfs right side (BAH/716)	2014	\$70.00	\$7.00
0311	*	#399 VFine LH (PRL/717)	2015	\$70.00	\$35.00
0312	**	#559 XFine; APS cert for plate block (PRL/715)	2015	\$16.50	\$20.00
0313	**	#731 VFine (BAH/716)	2014	\$22.50	\$5.00
0314	*	#750 VFine; HR (BAH/716)	2014	\$30.00	\$5.00
0315	**	#751 VFine (BAH/716)	2014	\$16.00	\$4.00
0316	*	#1538-41 VFine; First Day Program w/3 autographs (BAH/716]	N/A	N/A	\$2.00
0317	O	#1612 VFINE; First Day Cover (PRL/717)	2015	\$12.50	\$6.00
0318	O	#1909,#2122,#2541 XFine (PRL/715)	2015	\$28.50	\$12.00
0319	**	#2396a,#2398a VFine; Booklet Sheets (BAH/716)	2014	\$7.00	\$2.50
0320	O	#2624-2629abc VFine (PRL/715)	2015	\$18.50	\$10.00
0321	O	#3143-3150, #3146a XFine; On 9 Fleetwood First Day "Proof Cards" (BAH/716)	N/A	\$31.95	\$4.00
0322	O	#3209a-#3209i XFine; NH; Clean circular cancels (PRL/717)	2015	\$5.85	\$5.00
0323	**	#3930 VFine; Pane of 20 + First Day Cover (BAH/716)	2014	\$8.15	\$5.00
0324	O	Scott # N/A VFine; 2016 New Classics Forever; On Piece (BAH/2016)	N/A	N/A	\$2.00
0325	O	#C25 Fine; Cover, Crease (DLC/721)	N/A	N/A	\$2.00

Expertizing Fee Changes Effective April 1, 2017

Expertizing Fee		
	Retail/Catalog Value under \$1000	Retail/Catalog Value over \$1000

Postage Stamps		\$25.00	\$40.00
Covers, Postage Stationery		\$25.00	\$40.00
Hawaii Town Marks		\$25.00	\$40.00
Surcharges or Overprints	Flat Fee	\$25.00	\$40.00
Counterfeits	Flat Fee	\$25.00	\$40.00
Documents		\$25.00	\$40.00

HELP WANTED

Volunteers needed at the Westpex show Friday, Saturday or Sunday, April 28-30, 2017, to assist in staffing the HPS information table. If you can help or need more information, please contact Wayne. He can be contacted at 808-227-6905 or 808-261-5505. Mahalo.



0301



0302



0303



0304



0305



0306



0307



0309



0310



0311



0308



0313



0314



0315



0317



0319



0322



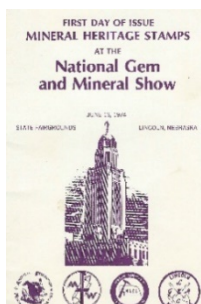
0312



0318



0320



0316



0321



0323



0325



0324



0326



0327



0328

LOT#	* / O	DESCRIPTIONS: (####) = Vendor Code; (*) = Unused; (O) = Used; (**) = Unused / Never Hinged; (OG) = Original Gum	CAT YEAR	CAT or RETAIL	UPSET
0326	O	#JQ1-#JQ5 Fine (BAH/716)	2014	\$82.50	#17.00
		United States Offices in China			
0327	*	#K13 F-VFine; LH (PRL/715)	2015	\$130.00	\$45.00
0328	*	#K15 XFine; LH, Crease (PRL/715)	2015	\$575.00	\$150.00
		Postal Currency			
0329	*	#PC5 VFine; NG (as issued) Issued 1862 (PRL/715)	2013	\$75.00	\$50.00
0330	*	#PC7 VFine; NG (as issued) Issued 1862 (PRL/715)	2013	\$135.00	\$85.00
0331	O	#O74, #O81 AVG (BAH/716)	2014	\$14.00	\$3.00
		Revenues			
0332	*	#R217 VFine; NG (SAI/720)	2015	\$75.00	\$9.50
0333	*	#R246 F-VFine; NG (as issued), Thin (SAI/720)	2015	\$50.00	\$8.50
0334	O	#RB1b VFine; Green paper (SAI/720)	2015	\$14.00	\$5.50
0335	O	#RB3a Fine; Violet paper, Thin (SAI/720)	2015	\$32.50	\$5.50
0336	O	#RB4a AVG; Sound (SAI/720)	2015	\$16.00	\$3.00
0337	O	#RB11c AVG; Face scuffed (SAI/720)	2015	\$160.00	\$12.00
0338	O	#RB17b Fine; Trimmed at top (SAI/720)	2015	\$25.00	\$3.25
0339	O	#RB19b F-VFine; Thin, Rounded Corner BL; Scarce Stamp (SAI/720)	2015	\$400.00	\$35.00
0340	O	\$RB57 Fine; Corner crease invisible from face (SAI/720)	2015	\$11.00	\$2.50
0341	*	#RB61 VFine; HH, Thin (SAI/720)	2015	\$80.00	\$12.00
0342	O	#RB63 AVG; Shallow thin; Invisible crease, Natural straight edge, right margin (SAI/720)	2015	\$11.00	\$1.75
0343	*	#RD31 AVG; NG (SAI/720)	2015	\$45.00	\$8.50
0344	*	#RK27 AVG; NG, Thin (SAI/720)	2015	\$47.50	\$7.50
0345	O	#RNE5 Fine; Cut square (SAI/720)	2015	\$37.50	\$2.25
0346	O	#RNE7 AVG (SAI/720)	2015	\$17.50	\$1.25
		CANAL ZONE			
0347	*	#46b Fine; OG, Double overprint, APS Cert for Blk of 4 (PRL/715)	2015	\$225.00	\$60.00
		HAWAII			
0348	O	#9 F-VFine; Thins, HPS Cert. No. 2588 (FSS/719)	2016	\$300.00	\$125.00
0349	*	#23 XFine; Closed tears, Creases, HPS Cert. No. 1531 (FSS/719)	2016	\$300.00	\$150.00
0350	*	#26 F-VFine; HR, Missing corner UR, HPS Cert. No. 2603 (FSS/719)	2016	\$350.00	\$160.00
0351	*	#27 AVG; NG, Missing corner UR, HPS Cert No. 2594 (FSS/719)	2016	\$350.00	\$125.00
0352	O	#34 Fine (DLC/721)	2017	\$40.00	\$4.00
0353	O	#40 Fine; Short perfs (DLC/721)	2017	\$25.00	\$3.00
0354	O	#48 F-VFine (PRL/715)	2015	\$85.00	\$40.00
0355	*	#49 AVG; LH/HR (PRL/717)	2015	\$275.00	\$70.00
0356	*	#61 Fine; HH (PRL/717)	2015	\$13.00	\$6.00
0357	O	#81 F-VFine; 'Flying Goose,' HPS Cert No. 2512 (FSS/719)	2016	\$350.00	\$175.00
0358	*	#O1 VFine; HR, OG (MBW/718)	2017	\$45.00	\$20.00
0359	*	#O2 F-VFine; HR, DG (MBW/718)	2017	\$45.00	\$20.00
0360	*	#O3 F-VFine; HR, OG (MBW/718)	2017	\$45.00	\$20.00
0361	*	#O4 F-VFine; LH, OG (MBW/718)	2017	\$45.00	\$20.00
0362	*	#R2 F-VFine; NG (PRL/715)	2013	\$35.00	\$20.00
0363	**	#U2a AVG; Termite hole, Slight tropic stain (MBW/718)	2017	\$5.00	\$2.00
0364	**	#U4 entire VFine (MDW/718)	2017	\$17.50	\$7.00



0329



0330



0331



0332



0333



0334



0335



0336



0337



0338



0339



0340



0341



0342



0343



0344



0345



0346



0347



0348



0349



0350



0351



0352



0353



0354



0355



0356



0357



0358



0359



0360



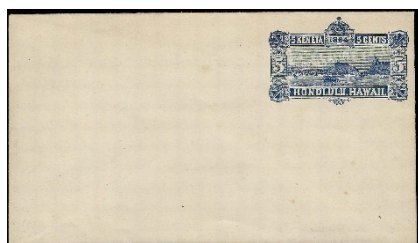
0361



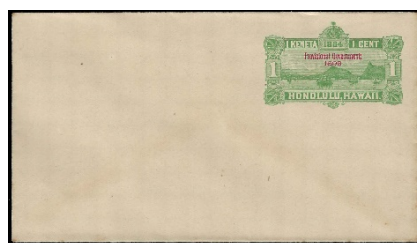
0362



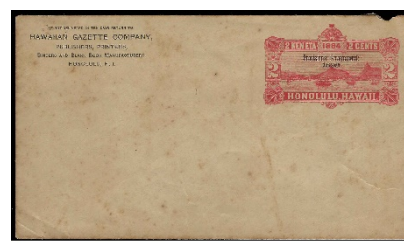
0363



0364



0365

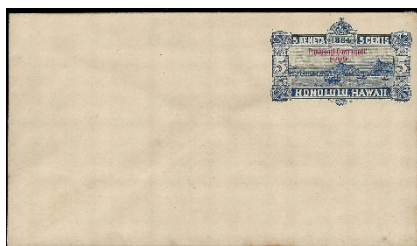


0366

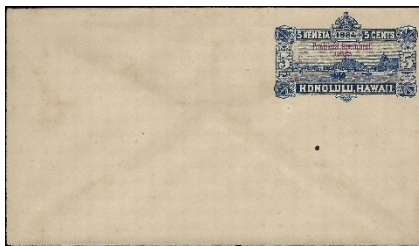
LOT#	* / O	DESCRIPTIONS: (####) = Vendor Code; (*) = Unused; (O) = Used; (**) = Unused / Never Hinged; (OG) = Original Gum	CAT YEAR	CAT or RETAIL	UPSET
0365	**	#U10 entire VFine; Tiny age spots (MBW/718)	2017	\$12.00	\$5.00
0366	*	#U11 Poor; HR, Tropic stain (MBW/718)	2017	\$6.00	\$2.00
0367	**	#U12 entire VFine; Small age spots (MBW/718)	2017	\$10.00	\$5.00
0368	**	#U12 F-VFine; Termite hole (MBW/718)	2017	\$10.00	\$6.00
0369A	O	#U12&US#554 Fine; Cover, Back flap missing (DLC/721)	2017	\$15.00	\$7.00
Town Cancels					
0369B	O	#31 Fine; HAMAKUAPoko, maui, 281.01 [R-6] (DLC/721)	2017	\$12.50	\$4.00
0370	O	#38 Fine+; On Piece, wailuku, MAUI 285.012 [R-2] (MBW/718)	2016	~\$100.00	\$25.00
0371	O	#43 VFine; LH, NG, WAIANAE, oahu 282.016 [R-7] (MBW/718)	N/A	~\$25.00	\$10.00
0372	O	#43 VFine; On piece, WAILUKU, MAUI 281.01 (II) [R-4] (MBW/718)	2016	~\$100.00	\$25.00
0373	O	#43 Fine; HONUPO, hawaii 282.012 [R-6] (DLC/721)	2017	\$1.00	\$2.00
0374	O	#43a F-VFine; On piece, Short perfs, Sl. tropic stain, wailuku, maui 282.012 [R-2] (MBW/718)	2016	~\$100.00	\$25.00
0375	O	#43a VFine; Sl. tropic stain, On piece, WAILUKU, maui 285.012 [R-2] (MBW/718)	2016	~\$200.00	\$50.00
0376	O	#57 Fine; On piece, KAILUA, HAWAII 282.011 [R-8] (DLC/721)	2017	\$1.50	\$3.00
0377	O	#75 Fine; HONOLULU, oahu, 281.02 [R-7] (DLC/721)	2017	\$.60	\$2.00
0378	O	#75 Fine; On piece, HANAIEI, KAUAI 282.011 [R-6] (DLC/721)	2017	\$.60	\$3.00
0379	O	#76 Fine; LIHUE, kauai 253.01 [R-7] (DLC/721)	2017	\$2.00	\$2.00
0380	O	#81 F-VFine; Short perfs, laupahoehoe, HAWAII 255.01 [R-4] (DLC/721)	2017	\$1.00	\$3.00
Fancy Cancels					
0381	O	#33 Fine; Short perfs, MH#141 [R-4] (DLC/721)	2017	\$10.00	\$3.00
0382A	O	#39 F-VFine; MH#113 [R-8] (DLC/721)	2017	\$3.00	\$1.00
HAWAIIANA					
0382B	O	#647 F-VFine; Cover, Post Mark WAHIAWA JAN 19, 1929 HAWAII (PRL/717)	2015	\$5.75	\$10.00
0383	O	#799 & #800 F-VFine; First day covers (2) (BAH/716)	2014	\$21.00	\$6.00
0384	O	#UY13m VFine; First day cover (Post Card) VOLCANO, HAWAII, Signed by Acting Postmaster (PRL/715)	2013	\$1.00	\$3.00
0385	O	#Q4 Fine; HONOLULU, HAWAII oval cancel (PRL/717)	2015	\$3.50	\$5.00

Results of the February 13, 2017 Auction—Lots not listed are passed lots.

0201-\$3.00; 0202-\$24.00; 0203-\$27.50; 0204-\$37.50; 0205-\$50.00; 0206-\$19.00; 0207-\$80.00; 0208-\$23.00; 0209-\$40.00; 0210-\$11.00; 0211-\$27.50; 0212-\$6.00; 0213-\$4.00; 0214-\$8.50; 0215-\$8.50; 0216-\$8.50; 0217-\$6.50; 0218-\$1.00; 0219-\$2.25; 0220-\$32.50; 0221-\$22.50; 0222-\$5.00; 0223-\$7.50; 0226-\$60.00; 0227-\$15.00; 0228-\$19.00; 0229-\$4.75; 0230-\$11.00; 0231-\$14.00; 0232-\$2.50; 0238-\$6.50; 0239-\$17.00; 0240-\$25.00; 0241-\$210.00; 0242-\$125.00; 0243-\$130.00; 0244-\$32.50; 0245-\$32.50; 0246-\$26.00; 0247-\$15.00; 0248-\$17.50; 0250-\$7.50; 0251-\$3.25; 0253-\$15.00; 0254-\$32.50; 0255-\$6.50; 0258-\$5.50; 0259-\$30.00; 0260-\$4.50; 0261-\$160.00; 0262-\$5.00; 0263-\$18.00; 0264-\$4.25; 0265-\$1.75; 0266-\$4.75; 0268-\$17.00; 0269-\$3.25; 0270-\$13.00; 0271-\$11.00; 0272-\$7.50; 0273-\$15.00; 0274-\$8.50; 0275-\$18.00; 0280-\$17.00; 0281-\$9.00; 0282-\$2.25; 0283-\$4.75; 0284-\$9.50; 0285-\$10.50; 0286-\$8.50; 0287-\$5.50; 0288-\$10.00; 0289-\$1.75; 0290-\$3.00; 0291-\$8.00; 0292-\$1.75; 0293-\$2.25; 0294-\$5.50; 0295-\$5.50. Total \$1715.00. 83% sold.



0367



0368



0369A



369B



0370



0371



0372



0373



0374



0375



0376



0377



0378



0379



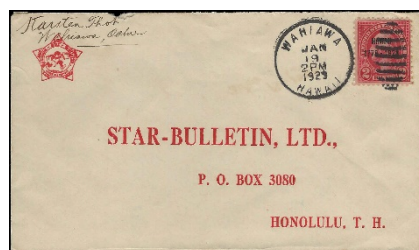
0380



0381



0382A



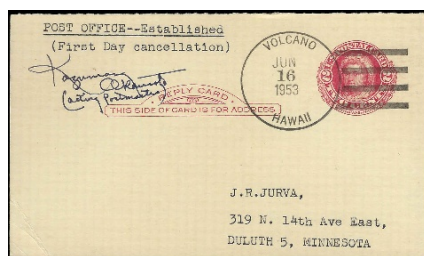
0382B



0383



0385



0384

LOT#	* / O	DESCRIPTIONS: (####) = Vendor Code; (*) = Unused; (O) = Used; (**) = Unused /Never Hinged; (OG) = Original Gum	CAT YEAR	CAT or RETAIL	UPSET
		CANADA			
0386	**/*	#110 VFine; Blk of 4, Only one stamp w/ hinge mark (PRL/717)	2014	\$407.50	\$165.00
0387	*	#114 F-VFine; LH, Extremely light hinge (PRL/717)	2014	\$20.00	\$8.00
0388	*	#115 VFine; LH (PRL/717)	2014	\$32.50	\$15.00
		CUBA			
0389	**	#E1 F-VFine; APS Cert. #209505 (PRL/717)	2015	\$300.00	\$180.00
0390	*	#J1, #J2, #J3, #J4 F-VFine/Fine/AVG; LH/HH (PRL/717)	2015	\$160.00	\$65.00
		FRENCH POLYNESIA			
0391	**	#222 VFine (DLC/721)	2015	\$9.50	\$2.00
		NORTH GERMAN CONFEDERATION			
0392	O	Cover AVG; Postal Stationary, Post Mark - HALLE 23/1/69 & HALLE 28/1/69 (BAH/716)	N/A	N/A	\$1.00
		SWITZERLAND			
0393	O	#46 F-VFine (DLC/721)	2016	\$47.50	\$6.00
	and we are pau!			

Notice: When mailing auction lots or stamps for expertizing in USPS Priority Mail 12.5x9.5" flat rate envelopes, please remember to clearly display DO NOT BEND on the envelope.



0386



0391



0387



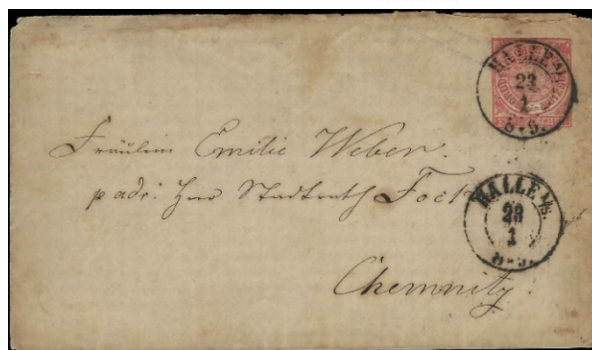
0388



0389



0390



0392



0393

HAWAII

STAMPS, COVERS, PROOFS, ESSAYS
BUYING & SELLING



Hawaii #78, Gutter Specimen Block
12 Cent Blue, 1894, World Class Rarity

PACIFIC MIDWEST CO.

P.O. Box 730818

San Jose, CA 95173

408-532-7100

EMAIL: GARYUCB@AOL.COM

WE ARE A WORLD CLASS HAWAIIAN DEALER

ASDA APS HAWAIIAN PHILATELIC SOCIETY CHINA STAMP SOCIETY

I wish to submit the following bids for the Hawaiian Philatelic Society auction

held on:

Signature: _____

Print Name: _____ Date: _____

Address: _____ Telephone: _____

City: _____ State: _____ Zip: _____

[illegible]

Must be a member to bid in the Auction.

ADDRESS SERVICE REQUESTED

