



# HAWAIIAN PHILATELIC SOCIETY

ORGANIZED 1911



Affiliate  
#136

P.O. Box 10115, Honolulu, Hawaii, 96816-0115 USA

EMAIL - [hphilsoc@gmail.com](mailto:hphilsoc@gmail.com)

October 9, 2017

**President:** Wayne Yakuma; **First Vice-President:** Glenn Yokoyama; **Second Vice-President:** Vacant; **Secretary:** Vacant; **Treasurer:** Jerry C. Coiner; **Auctioneer:** Ben Gale; **APS Representative:** Phillip C. Mendel (Pro Tem); **Po'Oleka Editor:** Gregory J. Chang; **Membership Chair:** Gannon Sugimura

**DUES** – A gentle reminder the annual membership fee is due and payable on October 1, 2017. A significant number of members have already renewed and for that a big Mahalo to you! If you have not mailed in your dues please do so at your earliest convenience.

**WEBSITE** – The Board approved funding for a website to assist members and individuals interested in joining the Society. This will be a time saver also for Board members who are tasked with responding to inquiries and or requests for forms.

**ALL HAWAIIAN AUCTION** – It is not too late to submit lots for the December "All Hawaiian" auction. Do note both the October and November auctions are assembled and closed for accepting lots.

**SESCAL** – A "Meet & Greet" is scheduled for Saturday, October 14<sup>th</sup> from 10-Noon in meeting room #103. This is hosted by Fred Gregory and Norb Wild will present "Picture Postcards of Pre-Territory Hawaii". If you will be attending the show please stop by and share in the "Aloha".

**PO'OLEKA O HAWAII** – The next publication is scheduled for release in January 2018. Gregory Chang (Editor) solicits articles for future editions. Articles do not need to be "polished" and in final form---Greg is available to assist anyone who is interested in having a philatelic related article published that would be of interest to the membership and Hawaiian philately

## CALENDAR OF EVENTS

October 1	10:30-4:30PM	Wiki Wiki Vintage & Hawaiiana Show	Blaisdell
October 2	2:00-4:00PM	HPS Executive Board Meeting	Zippy's Makiki
October 9	7:30-9:00PM	HPS General Meeting & Auction	St. Louis Alumni Club
October 14	10:00-Noon	SESCAL – HPS "Meet & Greet"	Ontario, Convention Center
October 20-22	10:00-6:00PM	HSNA Coin Show	Hawaii Convention Center
November 6	2:00-4:00PM	HPS Executive Board Meeting	Zippy's Makiki
November 13	7:30-9:00PM	HPS General Meeting & Auction	St. Louis Alumni Center

. Results of the September 11, 2017 Auction – Lots not listed are passed lots

901-\$45.00; 902-\$25.00; 903-\$13.00; 904-\$90.00; 905-\$170.00; 907-\$46.00; 908-\$13.00; 909-\$27.50; 910-\$11.00; 911-\$7.00; 912-\$1.00; 913-\$30.00; 914-\$9.00; 915-\$19.00; 917-\$9.00; 918-\$4.00; 920-\$5.50; 922-\$3.75; 924-\$2.75; 925-\$4.50; 926-\$8.50; 927-\$28.50; 928-\$3.25; 929-\$28.00; 931-\$3.25; 932-\$19.00; 946-\$10.00; 948-\$175.00; 950-\$185.00; 952-\$120.00; 954-\$135.00; 955-\$14.00; 956-\$185.00; 957-\$11.00; 958-\$65.00; 959-\$10.00; 960-\$31.00; 961-\$23.00; 962-\$11.00; 963-\$6.50; 964-\$4.25; 965-\$3.25; 966-\$6.50; 967-\$3.25; 968-\$7.50; 969-\$8.50; 970-\$4.30; 971-\$7.50; 972-\$10.00; 973-\$3.50; 974-\$8.50; 975-\$6.50; 976-\$4.00; 977-\$3.35; 978-\$12.00; 979-\$3.25; 982-\$3.50; 982-\$4.00; 983-\$4.25; 984-\$3.25; 985-\$3.25; 986-\$2.00; 987-\$1.00; 988-\$9.50; 989-\$13.00; 990-\$13.00; 991-\$11.00; 992-\$11.00; 993-\$13.00; 994-\$2.00.

LOT #	* / O	DESCRIPTIONS: (####) = Vendor Code; (*) = Unused; (O) = Used; (**) = Unused/Never Hinged; (OG) = Original Gum	CAT YEAR	CAT or RETAIL	UPSET
<b>UNITED STATES OF AMERICA</b>					
1001	O	#190 F-Vfine; PSE Cert. #01005240; F-VF 75 (PL/1774)	2015	\$95.00	\$40.00
1002	*	#214 Xfine; OG; LH; Faint Gum Bend (PL/1774)	2015	\$60.00	\$40.00
1003	**	#571 F-Vfine; OG; NH (PL/1774)	2015	\$80.00	\$30.00
1004	*	#573 Vfine; OG; VVVLH (PL/1774)	2015	\$110.00	\$65.00
1005	**	#834 Vfine; OG; NH; Copy of APS Cert. for Blk/4 (PL/1774)	2017	\$85.00	\$45.00
1006	O	R2 Average (SAI/1773)	2015	\$210.00	\$60.00
1007	O	R10 Average (SAI/1773)	2015	\$14.00	\$3.75
1008	O	R14 Average (SAI/1773)	2015	\$65.00	\$20.00
1009	O	R17 F-Vfine; Closed Tear; Thin; Beautiful Precancel (SAI/1773)	2015	\$150.00	\$13.00
1010	O	R19a F-Vfine; Probably Genuine Imperf; Close Margins at Right (SAI/1773)	2015	\$100.00	\$8.50
1011	O	R50 Average (SAI/1773)	2015	\$45.00	\$18.00
1012	O	R51 Fine; Pulled Perf (SAI/1773)	2015	\$60.00	\$8.50
1013	O	R52 Fine; Short Perfs; Readable Blue Hand Stamp (SAI/1773)	2015	\$8.50	\$3.50
1014	O	R53 Average; Tiny Perf Thin (Reverse) (SAI/1773)	2015	\$8.00	\$2.75
1015	O	R66 Fine; Holes Cut by State of MI Cancel (SAI/1773)	2015	\$27.50	\$5.50
1016	O	R72 Average; Pin Hole (SAI/1773)	2015	\$40.00	\$11.00
1017	O	R73 Average; Thins; "Uncut" (SAI/1773)	2015	\$300.00	\$55.00
1018	O	R79 Average; Thin (SAI/1773)	2015	\$180.00	\$30.00
1019	O	R96a Average; Correct Paper; Margins too Close Cut (SAI/1773)	2015	\$3,500	\$4.00
1020	O	R143 F-Vfine; Thins; Uncut; Nice Appearance (SAI/1773)	2015	\$90.00	\$20.00
<b>HAWAII</b>					
1021	*	#6 F-Vfine; NG; Thins; Creases; Spot at Bottom; HPS Cert. #2741 (FSS/1776)	2017	\$875.00	\$250.00
1022	O	#9 F-Vfine; Thins; Face Scuffed UL; Repaired-Filled Thins; Oil Infused Paper; HPS Cert. #2740 (FSS/1776)	2017	\$400.00	\$150.00
1023	*	#9 Vfine; PG; Thin; Creases; Stains; PF Cert. #539396 (FSS/1777)	2017	\$400.00	\$175.00
1024	O	#16 Fine; Thins; Missing Left Corner; HPS Cert. #2728 (FSS/1775)	2017	\$850.00	\$100.00
1025	O	#21 F-VF; Thins; Creases; Nick @Btm; HPS Cert. #2668 (FSS/1777)	2017	\$700.00	\$200.00
1026	*	#23 F-Vfine; NG; Tropic Stains; Thins; HPS Cert. #1533 (FSS/1777)	2017	\$300.00	\$125.00
1027	*	#24 F-Vfine; NG; HR; HPS Cert. #2622 (FSS/1777)	2017	\$350.00	\$150.00
1028	*	#24 Fine; NG; HPS Cert. #2632 (FSS/1776)	2017	\$350.00	\$110.00
1029	*	#25 VFine; NG; Soiling on Face; Tropic Stains; HPS Cert. #2654 (FSS/1777)	2017	\$350.00	\$175.00
1030	O	#27 F-Vfine; HR; Pinhole Upper LC; HPS Cert. #2730 (FSS/1775)	2017	\$350.00	\$150.00
1031	O	#28 F-Vfine; HR; Pinhole Left Corner; HPS Cert. #2727 (FSS/1775)	2017	\$325.00	\$110.00
1032	*	#28 F-Vfine; Regummed; HPS Cert. #2744 (FSS/1776)	2017	\$325.00	\$110.00
1033	*	#50 F-Vfine; HR; HPS Cert. #2733 (FSS/1776)	2017	\$170.00	\$90.00
1034	*	#64 Fine; OG; HR (MBW/1778)	2017	\$35.00	\$15.00
1035	*	#65 F-Vfine; OG; HR (MBW/1778)	2017	\$85.00	\$35.00





1001



1002



1003



1004



1005



1006



1007



1008



1009



1010



1011



1012



1013



1014



1015



1016



1017



1018



1019



1020



1021



1022



1023



1024



1025



1026



1027



1028



1029



1030



1031



1032



1033



1034



1035

1036	*	#67 F-Vfine; DG; VLH (MBW/1778)	2017	\$22.50	\$12.00
1037	**	#68 Fine; OG; NH (MBW/1778)	2017	\$24.00	\$9.50
1038	*	#71 F-Vfine; OG; HR (MBW/1778)	2017	\$37.50	\$11.00
1039	*	#72 F-Vfine; OG; HR (MBW/1778)	2017	\$90.00	\$35.00
1040	*	#73 F-Vfine; OG; LH (MBW/1778)	2017	\$160.00	\$70.00
1041	O	#75 "flying goose"; F-Vfine; Thins; Tears; Cut at Top; HPS Cert. #2641 (FSS/1775)	2017	\$450.00	\$100.00
1042	**	#77 Vfine; OG; NH (MBW/1778)	2017	\$18.00	\$6.50
1043	O	#80 Fine; Sl. Tropic Stain; Upper Left Corner Stamp (DLC/1771)	2017	\$1.50	\$1.00
1044	*	#82 Vfine; NG; Sl. Tropic Stain (MBW/1778)	2017	\$8.00	\$2.50
		<b>HAWAII FANCY "KILLER" CANCELS</b>			
1045	O	#43 MH #63; F-G Cross 17 (V ring) R-3; Fine (DLC/1771)	2017	\$1.00	\$5.00
1046	O	#31 MH #134; R-3; Fine (DLC/1771)	2017	\$12.50	\$5.00
1047	O	#43 MH #141; R-4; F-Vfine (DLC/1771)	2017	\$1.00	\$4.00
1048	O	#32 MH #151; R-8; Average (DLC/1771)	2017	\$30.00	\$5.00
		<b>HAWAII TOWN CANCELS</b>			
1049	O	U2; haMAKUAPOKO, MAUI; MH #281.01; R-6; Fine (DLC/1771)	2017	\$4.00	\$3.00
1050	O	#75; HONOMU, hawaii; MH #253.01; R-5; F-Vfine (DLC/1771)	2017	\$0.60	\$4.00
1051	O	#81; F.G. AUXRR-OAHU (Honolulu tall); R-1RRRR; F-Vfine; Short Perfs (DLC/1771)	2017	\$1.00	\$35.00
1052	O	#75 Pair; On Piece; KAHUKU, OAHO; MH #253.02; R-6; F-Vfine (DLC/1771)	2017	\$1.20	\$4.00
1053	O	#74 PR; On Piece; KAHULUI, MAUI; MH #272.642; R6; Fine (DLC/1771)	2017	\$3.00	\$3.00
1054	O	#76; oOKALA, hawaii; MH #259.023; R-4; Fine (DLC/1771)	2017	\$2.00	\$3.00
1055	O	#81; MH #253.9a1; R-7; Fine (DLC/1771)	2017	\$1.00	\$2.00
		<b>HAWAII REVENUE</b>			
1056	O	R3 Vfine (PL/1774)	2016	\$12.50	\$8.00
1057	O	R5 Vfine (PL/1774)	2016	\$50.00	\$25.00
1058	O	R8 F-fine (MBW/1778)	2017	\$100.00	\$45.00
1059	O	R11 F-Vfine (MBW/1778)	2017	\$9.00	\$2.50
1060	O	R14 Fine; Sl. Tropic Stain on Back (MBW/1778)	2017	\$40.00	\$19.00
1061	O	R15 Vfine (MBW/1778)	2017	\$60.00	\$23.00
1062	**	R15 Vfine (PL/1774)	2017	\$55.00	\$35.00





1036



1037



1038



1039



1040



1041



1042



1043



1044



1045



1046



1047



1048



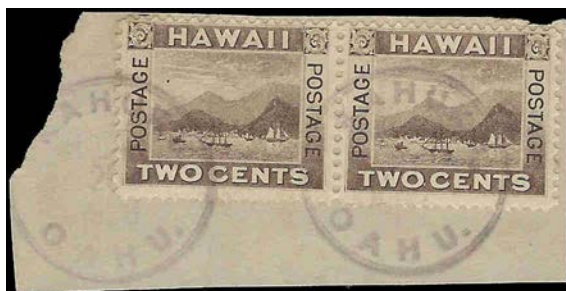
1049



1050



1051



1052



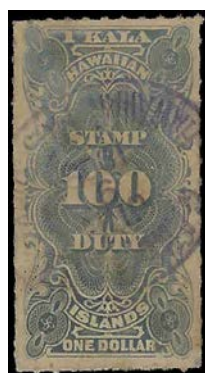
1053



1054



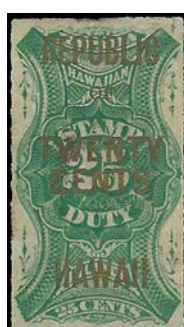
1055



1056



1057



1058



1059



1060



1061



1062

LOT #	* / O	DESCRIPTIONS: (####) = Vendor Code; (*) = Unused; (O) = Used; (**) = Unused/Never Hinged; (OG) = Original Gum	CAT YEAR	CAT or RETAIL	UPSET
1063	O	R16 Vfine (MBW/1778)	2017	\$70.00	\$26.00
1064	**	R16 F-Vfine; OG; NH (PL/1774)	2017	\$75.00	\$50.00
		<b>BELGIUM</b>			
1065	**	#310 3-Blks (10+15+15) Xfine; OG; NH (BRG/1772)	2017	\$10.00	\$2.00
		<b>CHINA</b>			
1066	**	#2166-2169 Blks/4; Xfine; NH (priced as singles) (BRG/1772)	2017	\$22.20	\$8.00
		<b>DENMARK</b>			
1067	**	Mint; NG as issued; NH; Vfine 1951 Denmark Souvenir Sheet; Centenary Stamp Exhibition (BRG/1772)	N/A	\$5.00	\$1.50
		<b>HONG KONG</b>			
1068	**	#213-14 w/SELVAGE; Xfine; OG; NH (BRG/1772)	2017	\$12.00	\$3.50
		<b>JAPAN</b>			
1069	**	#381a Vfine; Souvenir Sheet; NG as issued; NH (BRG/1772)	2017	\$9.50	\$3.00
1070	**	#475a Vfine; NG as issued; NH; Constitution of Japan, May 3, 1947 (BRG/1772)	2017	\$4.75	\$1.00
		<b>LAOS</b>			
1071	**	#620-26 (7 Blks/10); Vfine; OG; NH; Motorcycles (BRG/1772)	2017	\$4.65	\$2.00
		<b>NYASSA</b>			
1072	**	#110-14 (6/Blks) Xfine; OG; NH; Priced as Singles; 2¢ Blk/8; 2 1/2¢ Blk/4 w/Top Margin; 2 1/2¢ Blk/5 w/Bottom Margin+ Partial Imprint; 4¢ Blk/6 w/Bottom Margin+Full Imprint; 5¢ PBlk/2 w/Right+Bottom Margins; 6¢ PBlk/5 w/Right+Bottom Margins Very striking stamps (BRG/1772)	2017	\$30.00	\$9.00
		<b>PEOPLE'S REPUBLIC OF CHINA</b>			
1073	**	#2193a Complete Booklet; Xfine; OG; NH (BRG/1772)	2017	\$26.00	\$7.50
1074	*	#2377 Xfine Souvenir Sheet; NH (BRG/1772)	2017	\$10.00	\$3.50
		<b>PHILIPPINES</b>			
1075	*	C1 Fine; OG; HH; Thin (PL/1774)	2017	\$20.00	\$5.00
1076	*	C2 Fine; DG; LH (PL/1774)	2017	\$30.00	\$5.00
1077	*	C3 F-Vfine; DG; LH (PL/1774)	2017	\$75.00	\$25.00
1078	*	C6 Xfine; NG (PL/1774)	2017	\$80.00	\$20.00
1079	*	C17 F-Vfine; OG; LH Very Nice Specimen (PL/1774)	2017	\$300.00	\$120.00
1080	*	J4 F-Vfine; OG; LH; 4 Solid Margins (PL/1774)	2017	\$19.00	\$10.00
		<b>SOMALIA</b>			
1081	**	#192-94+C32-33 (5) Vfine; OG; NH (BRG/1772)	2017	\$5.00	\$1.50





1063



1064



1065



1066



1068



1069



1067



1070



1073



1071



1074



1075



1076



1077



1078



1079



1072



1080



1081



1081	**	#192-94+C32-33 (5) Vfine; OG; NH (BRG/1772)	2017	\$5.00	\$1.50
		<b>SWITZERLAND</b>			
1082	O	#21 Average; Trimmed at Top (DLC/1771)	2017	\$125.00	\$12.00
1083	O	#25 Average; Trimmed on Right Side (DLC/1771)	2017	\$40.00	\$3.50
1084	O	#36 Fine (DLC/1771)	2017	\$24.00	\$4.50
		<b>TOGO</b>			
1085	**	#438-43 (7) Vfine; OG; NH (BRG/1772)	2017	\$4.35	\$1.50
		<b>TONGA</b>			
1086	**	#588-89 Xfine; OG; NH; Self-Adhesive (BRG/1772)	2017	\$6.75	\$2.00
		<b>VATICAN CITY</b>			
1087	**	#155 Xfine; OG; NH (BRG/1772)	2017	\$5.00	\$1.50
		<b>and we are pau!</b>			



# WE SELL

# Hawaii!!

**OUR WEBSITE OF HAWAII ONLY:**  
[www.vogtstamps.com](http://www.vogtstamps.com)

Stamps, Covers, Postcards, Flight Covers, Documents, Coins, Currency, Paper Ephemera, Autographs, Memorabilia, Photographs, Kahului Railroad. **In short, nearly everything!**

**FROM RARITIES TO COMMON  
GEMS TO NOT  
(MANY NOT ON THE MARKET  
FOR HALF A CENTURY!)**



**Rare 66C Block**



**Honolulu Straight Line Cancel**

# VOGT STAMPS – HAWAII

650-344-3401 phone  
 650-401-5530 fax  
[vogtstamps@aol.com](mailto:vogtstamps@aol.com)





1082



1083



1084



1085



1086



1087

# HAWAII

**STAMPS, COVERS, PROOFS, ESSAYS  
BUYING & SELLING**



**Hawaii #78, Gutter Specimen Block  
12 Cent Blue, 1894, World Class Rarity**

**PACIFIC MIDWEST CO.**

**P.O. Box 730818**

**San Jose, CA 95173**

**408-532-7100**

**EMAIL: GARYUCB@AOL.COM**

**WE ARE A WORLD CLASS HAWAIIAN DEALER**

**ASDA APS HAWAIIAN PHILATELIC SOCIETY CHINA STAMP SOCIETY**

I wish to submit the following bids for the Hawaiian Philatelic Society auction held on: \_\_\_\_\_

Signature: \_\_\_\_\_

Print Name: \_\_\_\_\_ Date: \_\_\_\_\_

Address: \_\_\_\_\_ Telephone: \_\_\_\_\_

City: \_\_\_\_\_ State: \_\_\_\_\_ Zip: \_\_\_\_\_

[illegible]

### Bidding Increments

0.25	to 5.00 by 0.25	25.00 to 50.00 by 2.50
5.00	to 10.00 by 0.50	50.00 to 100.00 by 5.00
10.00	to 25.00 by 1.00	100.00 and up by 10.00

Must be a member to bid in the Auction.

P.O. Box 10115  
Honolulu, Hawaii 96816-0115

ADDRESS SERVICE REQUESTED

