

# PO'OLEKA O HAWAII



**The Semi Annual Journal of the Hawaiian Philatelic Society**

Number 82

July 2016

*(left blank)*

---

---

# PO'OLEKA O HAWAII

The Semi Annual Journal of the Hawaiian Philatelic Society

---

Number 82

July 2016

---

## Editor's Notes

By Greg Chang, Editor

Aloha and welcome to the second issue of the PO'OLEKA O HAWAII for 2016.

Our first article is on the many Hawaiian related people that have been honored on postage stamps. Tony Rozycki mentions a long list of folks that have been so honored.

The second article details a couple of issues that have been released by Hawai'i Post. The first part details the issue released for cruise ships. Norwegian Cruise Line's Pride of America is one of the few cruise ships that only sail within the Hawaiian Islands. The second part details movies filmed on the Hawaiian Islands.

Finally, I had an opportunity to attend the meet and greet session last year at WESTPEX 2015 in the San Francisco Bay Area. It was nice to meet the host Ben Gale as well as several other members that live in the San Francisco Bay Area. My article briefly covers the meeting in addition to some photos taken at the event. I'm looking forward to future meetings in the Bay Area.

Until next time, Aloha!

Greg Chang  
Editor

## What's Inside

Who's Who & What's What on Some Hawaiian Postage Stamps By Tony Rozycki	2
Selected Hawai'i Post Releases	12
WESTPEX 2015 By Greg Chang	15



# Who's Who & What's What on Some Hawaiian Postage Stamps

By Tony Rozycki

**H**awaiian postage stamps are listed in the Hawaii section of *Scott Specialized Catalogue of United States Stamps*. Revised annually, this catalog is available in many public libraries. It contains a thorough listing of stamps issued for and used in Hawaii when the Archipelago was a Kingdom, Provisional Government, Republic, Territory, and since 1959 a State.

The United Kingdom of Hawaii was one of the first countries to issue and use postage stamps. After Great Britain featured Queen Victoria on the Penny Black stamp in 1840, the United States issued a pair of stamps in 1847 honoring Ben Franklin and George Washington. In 1851 Hawaii issued its now famous, rare and very valuable "Missionary" stamps on fragile paper and in three denominations – 2 cents, 5 cents & 13 cents.

The idea of postage stamps caught fire and by 1860 most countries were printing their own stamps each with their respective unique artistic and cultural styles and themes. Several colonial powers were interested in the Polynesian paradise that British Captain James Cook, with his shipmates, christened the "Sandwich Islands".

In 1849 Ceres, a goddess of agriculture was pictured on the first French stamps. The Imperial Dragon was pictured on the first Chinese stamps soon followed by a Ying-Yang watermark. Early Japanese stamps also pictured Dragons and then Chrysanthemums and Kiri tree branches. The Russian coat-of-arms appeared on the first Russian stamps. Other catalog #1

issues include Queen Maria of Portugal.

The first post office in Hawaii, known as Honolulu Hale (house) or "the Polynesian", was located on Merchant and Ka'ahumanu (now Bethel) Streets near Honolulu Harbor. In 1871 the Royal Post Office was opened next door to the Polynesian and is now a National Historic Site. The first postmaster was Henry Whitney. Whitney also founded the newspaper that became today's *Honolulu Advertiser*.

King Kamehameha I's statue appears on Hawaii stamps with catalog numbers 47, 64, 76, 82 and US number 799. His portrait appears on Hawaii R11. "Kam I" was born in 1758 a year Halley's Comet flew over the Big Island. Partly because of this he was raised in secret and groomed for royalty. In 1778 at age twenty he met Captain Cook aboard the British flagship *HMS Resolution*.



He is called Kamehameha "the Great" largely because he united all the Hawaiian Islands under one government. Kam I ruled the Kingdom from 1795 to 1819 (before the era of postage stamps). The first statue of Kam the Great, sculpted in France and Italy simultaneously with the Statue of Liberty, was lost at sea off the Falkland Islands.

US rose-red air mail stamp C55 honors Hawaii Statehood & Kam I on a map of the main Islands. Orange & multicolored C84



pictures the Ki'i statue & Temple at the City of Refuge National Park on the Big Island where King Kam I was born.

King Kamehameha II, who abolished many ancient taboos, died in England at age 27 and is the only Hawaiian monarch not yet featured on a postage stamp. Kam II was the last Royal Hawaiian polygamist.

King Kamehameha III is pictured on Hawaii number 5 thru 11. He lived from 1813 to 1854 and ruled the Kingdom from 1825 to 1854. He was king when the first postage stamps were issued. Kam III coined Hawaii's motto *Ua Mau Ke Ea O Ka 'Aina I Ka Pono* (the life of the land is perpetuated in righteousness), also perpetuated on Hawaii's recently minted State quarter.

King Kamehameha IV, Kam III's nephew & adopted son, is pictured on Scott # 27-28, 31 & 65. Kam IV lived from 1834 to 1863 and ruled from 1854 to 1863. He went to law school when he was 15. He and Queen Emma worked for free health care for Hawaiians who were under attack from influenza, leprosy and smallpox.

King Kamehameha V appears on Scott # 32-33, 39, 52C, 58-60, 66C & 71. Kam V lived from 1830-72 and ruled from 1863-72. Kam V was a large man, the older brother of Kam IV, and was known as the "Bachelor King" despite social pressure to leave an heir. Because of his size and wealth he often traveled around Oahu by steamboat and railroad.

King David Kalakaua is featured on Scott 35, 38, 40, 44-45, 56, 61-61B, 66, 67-68. King David lived from 1836 to 1891 and ruled from 1874 to 1891. Known as the "Merry Monarch", he revived hula dancing. In a poker game against sugar tycoon Claus Spreckels, King David proclaimed his three kings beat Claus' three aces because David

himself was the "fourth king".

David's other accomplishments include the building of Iolani Palace and transcribing many ancient Hawaiian chants. He was the first monarch in the world to circumnavigate the globe and also the first to visit Washington DC. He allowed the United States to use Pearl Harbor in exchange for tariff breaks for Hawaiian-grown sugar sold in the United States.

David also visited the Emperors of China and Japan. He passed away in San Francisco while seeking medical treatment. He was a friend of Robert Louis Stevenson author of *Treasure Island* and several short stories and poems set in Hawaii. RLS' "Dead Man's Chest" is pictured on British Virgin Islands # 110.

Princess Victoria Kamamalu appears on Scott # 30 & 53. She lived from 1838 to 1866. Kam V's sister, Victoria was expected to succeed her brother, but passed away at age 27. Victoria is sometimes called the "Queen for a Day".

Governor Mataio (Mathew) Kekuanaoa is pictured on Hawaii stamps # 34 & 71. He was an able official, but his career was handicapped by his poor English language skills. He managed to sire Kings Kam IV & V and several other royal children. Mark Twain called him a "man of noble presence".

Prince William Pitt Leleiohoku (1854-77) appears on stamps # 36, 46, 62-63 & 69. William is the younger brother of King David. He was a talented musician who composed the *Hawaiian War Chant*. He took the name of the British prime minister of his day. King David named William Pitt to succeed him, but William passed away too young of rheumatic fever. King William's *Kawaiha'o Singing Club* survives

in Honolulu.

Princess Likelike (1851-87) appears on stamps #37, 42 & 54-55. She married Scottish merchant A. S. Cleghorn and they had a beautiful, popular daughter Princess Ka'iulani.

Highly educated and well-traveled Princess Ka'iulani (1875-99) made friends with such *haole* luminaries as poet R.L. Stevenson and President Grover Cleveland, but she passed away at the tender age of 23. She spoke Hawaiian, English, French, German and was considered a marriage prospect for a Japanese prince. So far she hasn't been honored with a postage stamp except by Hawaii Post.

*Princess Ka'iulani: Hope of a Nation, Heart of a People* by Sharon Linnea is a fascinating and touching biography. There is also a movie about the Princess in the works.

Queen Julia Kapiolani (1834-99) appears on stamps 41 & 70. Her ancestors are from Kauai, but she was born on the Big Island. She married King David in 1863. In London for Queen Victoria's Jubilee, she presented Victoria with a pair of very rare *O'o* feathers. Popular Kapiolani Park & lesser known Kapiolani Garden in Waikiki, and Kapiolani Medical Center in Honolulu where Barack Obama was born, are named for this Queen.

King William Lunalilo (1835-74) appears on stamps 48 & 72. Prince Billy was elected king by a landslide and soon became known as "The People's King". Thirteen months later he died of consumption.

Queen Emma (1836-85), wife of Kam IV, appears on stamps 49 & 73. Their only son Prince Albert died at age 4. Famously unpretentious, Emma led a royal procession

into the rainy heart of "Menehuneland" in Kauai, but insisted upon a chant and hula break. She was an avid gardener who planted the magenta bougainvillea in Lawai Garden in what is now the National Tropical Botanical Garden. She also established Queen's Medical Center on Punchbowl Street downtown Honolulu.

Queen Liliuokalani (1838-1917) on stamp # 52 was the last Hawaiian monarch. When the very literate Queen Lili was deposed and placed under palace arrest, she composed the world famous song *Aloha 'Oe* and wrote her autobiography *Hawaii's Story by Hawaii's Queen* explaining why she believed the overthrow of the monarchy was illegal. She spent the remainder of her life advocating restoration.

Lili was a friend and sometimes ally of President Cleveland. As soon as Cleveland was voted out of office, Hawaii was annexed by the United States. Many believe if the United States didn't annex Hawaii, some other more distant national power would.

President Sanford Dole (1844-1926) who appears on stamp # 79



had a law office in Honolulu. He was a friend of King David & Queen Lili, & cousin of pineapple magnate Jim Dole. During a recent philatelic research session with the *Buxton Encyclopedia of Watermarks*, I was disappointed to learn that apparently the only stamps containing a pineapple watermark are from Jamaica. But see also US postcard UX488.

Queen Lili enacted a tax on playing cards in 1892. As a Hawaii playing card revenue stamp was being prepared, the tax was repealed by President Dole before the stamp was printed. In 2000 I asked an Oahu tour

guide named Cousin David if the pineapple Dole's were any relation to Vice-President Bob Dole and he said "no, someone else asked the same question."

Lorrin Andrews Thurston (1857-1931) on Hawaii's 1896 Official Stamps is the son of missionaries and, with Sanford Dole, a member of the Provisional Government of 1893-4. Thurston Lava Tube in large Hawai'i Volcanoes National Park is named for him.

On the Coat of Arms stamps # 74 & 80 the Stars & Stripes represent the eight largest Hawaiian Islands.

"View of Honolulu" stamps #75 & 81 were first printed in 1894. Janet Klug, President of the American Philatelic Society, built a nice manageable-sized Republic of Hawaii collection and later got into postmarks most of which are in Hawaiian Philatelic Society Treasurer Kay Hoke's *The Hawaii Townmark Identifier*.

*S.S. Arawa* 12 cents blue #78 is one of my favorite stamps and is popular with many collectors. *S.S.* stands for "steamship" - a good topical subject. I've read conflicting histories of the *S.S. Arawa*, but apparently it linked Hawaii, Australia, Canada & New Zealand. *Arawa* is Maori for "that which returns" or an ocean-going canoe.

This 19<sup>th</sup> century vessel on this "Hawaiian Blue Nose" stamp has two masts and two stacks, a top speed of 13 knots, and electric lights. It's the only stamp to bear the words Republic of Hawaii. (Regarding Hawaiian ships, I saw the great *S.S. Lurline* and the *S.S. President Cleveland* off Aloha Tower in 1948.)

UX2 is a postal card with a view of Diamond Head, a copy of which I proudly purchased cheaply at a Honolulu stamp shop

during a beautiful sunny shower. I was on a short, but glorious vacation to Oahu for the first time in 52 years. After walking from Waikiki's thrifty Aston Prince Hotel on Nahua Street along Ala Wai Canal to Honolulu Harbor and snapping pix from the free Aloha Tower observation deck, I ran into a Bishop Street sign.

Already dazed by the unfamiliar (to me) tropical sun, I headed *mauka* up Bishop Street hoping to be near Bishop Museum which I'd read about in *Hawaii on \$50 a Day*. Instead I discovered Hawaiian Island Stamp & Coin at 1111 Bishop St and soon felt like an invigorated cub scout philatelist.

Part of the reason I'm obsessed with Diamond Head is happily viewing old slides of the crater with friends & relatives, especially during holiday gatherings, between 1948 and 2000. Then I returned to get some updated photos of the old sites and sights. 'Twas interesting to note the hotel development in Waikiki. Some of the old landmarks however are still outstanding – the Moana and Royal Hawaiian Hotels, Aloha Tower & some tall coconut palm and big old banyan trees near the beach.

Another of my favorite stamps also provides a view of Diamond Head. This is US Airmail Scott # C46 "Plane over Diamond Head" issued in 1952... 80 cents "carmine". My ragged 1962 one-volume Scott Catalog describes this stamp as "bright red-violet". So I checked the two shades using my handy philatelic "Wonder Color Gauge" and found examples of *carmine*, *carmine red* and *red-violet*, but not *bright red-violet*.

There's also a plane on the # C46 view of Diamond Head. What the heck, it's a C-46 Curtiss-Wright Commando. Matching stamp catalog & plane model numbers! How did that happen? Not to be confused with the inverted Curtis Jenny biplane.

The C-46 Commando was an Army transport plane. Maybe that's how Ma and I got from San Francisco to our pineapple field hut outside Schofield Barracks in 1947. (There's a small, recently publicized park near the MN State Fair Grounds named Curtiss Field for the firm that made the C-46.)

Another interesting US airmail stamp design is the 1937 pair of green and carmine China Clippers over the Pacific #'s C21-2. That reminds me of the 1927 Dole Air Race from Oakland to Hawaii in which the winner ran out of gas and crash-landed in a Kiawe thorn tree on Molokai.

It was from our old slides that I learned the original Beachboys were from Hawaii not southern California. US #3660 stamp of surfer Duke Kahanamoku is a great modern commemorative I think. Duke won Olympic medals during four Olympics from 1912 thru 1932. The stamp is based on an old photo from Bishop Museum. Diamond Head is pictured in the background. (My two cats Duke 1 & 2 were named for Duke K, former Dodger Duke Snider & possibly Duke Ellington.)

Most people that have been to Hawaii know that Iolani is the only true palace in the United States. See postal card catalog # UX8 issued by the Republic of Hawaii in 1894 as well as Hawaii's 1937 commemorative US #799. The most popular statue of Kam I stands in front of Iolani Palace.

The Royal Emblems UX3 include torch and *puloulou* (*kapu* scepter). See *History of Hawaiian Stamps* by Emmet Cahill (Orchid Isle Publishers).

As a geographer, # UX9 "Map of Pacific Ocean, Mercator's Projection" is the old

Hawaiian stamp I'd most like to acquire. It's actually a postcard and so far none of the dealers I've checked have been able to locate a copy for sale, although they warned me if they did it would be expensive!

In 1947-8 my Dad was a skinny, young but bald, medical doctor interested in new things and the proud owner of his first camera – a 35mm Kodak. In Hawaii he developed a fancy for *Sen-Sen*, tiny licorice breath freshener squares that came in a slightly exotic, for Minnesota, package.

Dr. Sun Yat-sen (1866-1925) appears on US stamps 906 & 1188 and many stamps from



China, Hong Kong, Japan, Macau, Taiwan, United States and other countries. Sun lived in Hawaii

from 1879 to 1883, graduated from old Oahu College, and became an important political leader. He also lived in China, the former Portuguese enclave of Macau China and traveled around Asia, America and Europe. I believe he was the middle road between Mao versus General & Madame Chiang Kai-shek.

There's a statue of Sun in Honolulu, as there is of Philippine hero Jose Rizal. When I worked for the Treasury Department, I had a Filipino-Californian colleague named Jose Tarnowski (adopted by Polish-Americans). He enlightened me about a mysterious old slide from a Honolulu market of a scary-looking egg. A *balut* or once-buried fertilized duck egg, he explained, is also a Filipino tradition. In gratitude I showed him my mint block of Jose Rizal stamps.

Sun was briefly kidnapped in London in 1896 by a Chinese rival. In 1913 Arthur Ward aka Sax Rohmer published *Dr. Fu*



*Manchu* the first in a series of silly mysteries about a Chinese criminal genius. One stamp (Guernsey 580a) commemorating Charlie Chan is really a picture of Warner Oland in a *Fu Manchu* movie.

Another philatelic theme that interests me is authors that have lived in and loved Hawaii. The two verbs are synonymous *vis-a-vis* Hawaii as far as I can tell. I'm most familiar with the great American and English writers associated with Hawaii:

Herman Melville (1819-91) author of *Moby Dick* is remembered on US 2094. After sailing around the Horn aboard a whaling ship, he worked as a clerk in Honolulu and greatly appreciated Hawaii and its people. Later he wrote *Typee: A Peep at Polynesian Life* in which he disses King Kam III's Finance Minister Dr. Gerrit Judd, which may explain why Judd isn't on a postage stamp.

Mark Twain (1835-1910) US 863 spent four months in Hawaii in 1866 on assignment for the Sacramento Union & dispatched 140 witty articles about Hawaii (*Letters from Hawaii*). He was also fond of the Hawaiian people, tho he ridiculed monarchies as a form of government in *A Connecticut Yankee in King Arthur's Court*. In 1985 Grenada Grenadines issued five postage stamps of Disney characters from Twain's work.

From 1888 to his early demise R.L. Stevenson (1850-94) lived in Hawaii and Samoa in fulfilment of his own advice that "we have a duty to be happy". The young Scottish author spent quality time relaxing under his favorite banyan tree at the Moana Hotel on Waikiki Beach, wrote poetry for Princess Ka'iulani & King David, and defended Father Damien from detracting competitors. Hawaii Post has commemorated RLS on its stamps. See also US 3502r (Billy Bones) & Great Britain

1479 (Long John Silver).

Hawaii Post interests me because of its wide range of philatelic subjects. It has included worthwhile themes thus far not recognized by regular post offices. Am interested in, but don't completely understand, the legal status and function of Hawaii Post. To further blur the line between public and private, the US Postal Service now authorizes custom made photo stamps. See for example Zazzle.com

Jack London (1876-1916) US 2182 & 2197: In 1907 Jack and his wife Charmian sailed their homemade yacht *Snark* from San Francisco Bay thru the Golden Gate to Honolulu where he wrote about trying to learn to surf Waikiki and several other Hawaiian subjects. One of my favorites is *Chun Ah Chun* about a businessman who makes a fortune in Honolulu and retires in Macao.

Somerset Maugham (1874-1965) was an English ex-pat who traveled around the Pacific, including Hawaii, writing popular stories involving relationships between people of different ethnicities. *Rain*, about a Honolulu woman on a cruise ship, is one of his most famous and the basis for two movies.

Earl Derr Biggers (1884-1933) introduced Charlie Chan in his first mystery *The House Without A Key* (which is still in Waikiki). The first Charlie Chan detective movies starred part-Russian Swedish actor Warner Oland as Chan. Several countries have issued stamps of Oland. Chan was based on a real Honolulu PD gumshoe named Chang Apana (1871-1933).

James Michener (1907-97) US 3427A wrote the sweeping multi-generational saga *Hawaii*. The part about the Molokai Leper Colony is especially memorable to me. He began writing as a naval historian in WW2.

His first book was the basis for the movie *South Pacific*. The Mari Sabusawa Michener Society was established in honor of his wife.

Other great tropical topics include Hawaiian flowers, fruits, trees, birds, fish & mammals. There's the 1982 #2002B sheet of 50 State



bird & flower stamps including the Hawaiian Goose or *Nene* with a *Red Hibiscus*. Hawaii's official "State flower" *Yellow Hibiscus* appears on US 3571. There's also the 1999 #3310-13 block of

four tropical flowers: *Bird of Paradise*, *Royal Poinciana*, *Gloriosa Lily* & *Chinese Hibiscus*. The endangered Hawaiian Monk Seal appears on 3105c & UX277.

Hawaii began issuing State Duck Stamps in 1996, but duck hunting is no longer allowed. They are listed in the State Hunting Permit section of *Scott's Specialized Catalogue*. Federal Duck Stamp RW31 features Hawaii's State Bird the endangered *Nene* Goose.

Ships, lighthouses & waterfalls are popular topics each of which could fill a separate album with stamps from a multitude of countries. Captain James Cook (1728-1779) is commemorated on stamps of the United States (# 1732-1733), Great Britain, Australia, Cook Islands and others. US #1733 portrays Cook's *HMS Resolution* & *Discovery* surrounded by Hawaiian greeters. The Hawaiian State flag with Union Jack & the eight island stripes, approved by Kam I, is part of the 1976 bicentennial sheet of 50 State flags (#1682).

One of the five US Pacific Lighthouse stamps issued in 2006 is Diamond Head Light. The original tower was built in 1899. The other four Pacific lighthouses in the

pane are naturally Alaska, California, Oregon & Washington. There are a lot of philatelists who collect lighthouses & there may be almost as many lighthouses!

Aloha Tower Lighthouse, built in 1870, is the oldest in Hawaii. (I have a 1947 slide of tall Kalapaupa Lighthouse that served Molokai's Leper Colony for a century & a 2000 slide of an unidentified lighthouse on Oahu's North Shore.)

One of my favorite new sheets is the 2006 forty (not 50) geographical "Wonders of America". Hawaii is recognized for three superlatives: Molokai's highest cliffs, Mt Wai'ale'ale on Kauai "rainiest spot", and Kilauea "most active volcano". I wanted to count the Blue Whale "loudest animal" stamp, but alas that species is rare in Hawaiian waters. Too loud perhaps. The Kauai stamp #4066 reveals one of the many secluded waterfalls on the rainiest Mountain. Is that an O'o behind the rainbow? Perched on a Menehune's shoulder?

Keck I & II telescopes at Mauna Kea Observatory, atop the world's tallest mountain measured from its ocean base, in Volcanoes National Park on the Big Island are pictured on US 3409c issued in 2000. Several nations share world-class telescopes at the summit. In Honolulu's Bishop Museum, Watumull Planetarium shows a more accessible movie about Mauna Kea and its astronomical explorers.

Hawaiian artist Clarence Lee designed several stamps including Chinese Lunar New Year issues from the Year of the Rooster (US 2720) issued in 1992 (the Year of the Monkey) for use in 1993, and US 3895 a "double pane of 24 stamps". Lee also designed the 2008 Beijing Olympics commemorative US #4334.

While in the army in Korea I received a

large assortment of old Indian Feudatory States stamps to share my barracks bunk & foot locker. Later I purchased a colorful assortment of Korean stamps from the Yongsan PX in Seoul. Still later at Fort Ord, Monterey CA I left JAG for the more popular job of mail clerk. One of my fellow slightly-disgruntled postal workers Joe Takeuchi rescued a precious sheet of used & discarded Korean stamps for me from the company mailroom wastebasket.

Forty years later I met a Portuguese-Hawaiian Wal-Mart clerk named Amy in the cold Twin Cities. She is from Waipahu near Honolulu, Pearl Harbor and the old sugar mill of which I have a 1947 slide. This prompted me to take a closer look at Kay Hoke's *Hawaii Townmark Identifier* during a long warm, autumn bath. I've also considered a MN townmark collection and was intrigued by some of the mills, plantations, Volcano House etc Hawaii townmarks and their histories.

I confused Waipahu with Waialua Plantation on the North Shore. The latter was founded in 1898 by C & H Sugar Company makers of "pure cane sugar from Hawaii" and acquired by Dole in 1996. Waipahu was founded by Oahu Sugar Company. Amy recalled the old Waipahu mill smokestacks looked like giant "cigarettes". Now Waipahu mill is a garden park called Plantation Village which I hope to visit next time.

Volcano House postmark is from the public lodge on Kilauea crater or *caldera* in Hawaii Volcanoes National Park. (I recently asked a science professor the difference between crater and caldera, lazily hoping he'd say they're the same. Unfortunately he explained the difference.)

Hawaiian Senators Akaka (or Akaka Falls), Fong & Inouye have potential to be honored

by philately. As a kid Senator Inouye had a chemistry set, crystal radio, homing pigeons & a stamp collection.

Google "Five-O Faux Stamps" to see Duke Wedemeyer's *Hawaii Five-O* faux stamps starring detectives Steve McGarrett, Danno Williams, Chin Ho Kelly, Kono (Zulu), Ben & Duke.

Father Damien lives on stamps of Hawaii Post and his birthplace Belgium (Scott #605). The leper priest is also being considered for sainthood by the Vatican.



According to Barth Healey, late stamp columnist for the New York Times, Damien is also being

considered for stamphood by the USPO. President Carter approved Kalapaupa National Historical Park in 1980.

Dr Armauer Hansen, the Norwegian physician who discovered the actual cause of leprosy, is honored on stamps of several countries including Brazil, Cuba, Norway & Pakistan. Despite a cure, the World Health Organization estimated there were four million people with leprosy in India as recent as 1987.

James Jones' excellent novel *From here to Eternity* was made into a classic movie of the same name with Deborah Carr & Frank Sinatra (US 4256) filmed in Hawaii at various locations including Hanauma Bay, Honolulu & Schofield Barracks. Jurassic Park was filmed in Kauai (US 3191k).

Douglas MacArthur (US 1424) and Pearl Harbor (US 2559i) are important history. In 1945, aboard the US Missouri in Pearl Harbor, MacArthur signed the peace treaty ending WW2.

Hawaiian 4H club member, Eagle Scout & Astronaut Ellison Onizuka from Kona, who died on the space shuttle *Challenger* in 1986, is already on Ghana, Grenada Grenadines & Sierra Leone (Scott # 2138) postage stamps.

Elvis is featured on US 2721 (perf 11), 2724 (perf 10) & booklet 2731. Three of his flicks were filmed in Hawaii. I saw the best, *Blue Hawaii*, with an old girlfriend at a drive-in theater. The others are *Paradise, Hawaiian Style & Girls, Girls, Girls* – no acting awards issued.

Don Ho – there is a 2008 bill pending requesting a stamp of this famous Hawaiian pop singer. Traditionally a person must be deceased at least a decade before they can be considered for their own US stamp.

In 1947 we were assigned living quarters in an abandoned officer's party shack in Ekahanui Gulch. There was a Papaya (US 4256) tree in our yard from which my parents picked breakfast. A few years ago my Mother (now 91) had a stroke and subsequently began reciting a chant “Oh tall Papaya tree... ” I've been unable to determine the origin of the possibly Hawaiian poem. My Aunt says Ma composed it.

Many postage stamps honor people who retired to Hawaii such as Charles Lindbergh (Maui) US C10 & 1710, Ferdinand & Imelda Marcos, & Syngman Rhee who married Franziska Donner & retired to Honolulu. US 3982 reminds me of industrialist Henry J. Kaiser who had one foot in Oahu & the other in Detroit.

For philatelists interested in rare, high value Hawaiian stamps the Hawaii #1 Missionary unused is now worth over \$700,000. In 1892 a Hawaii #1 in Paris led to a murder, a

theft, a hanging, and two dead philatelists both of whose surnames end in the letter X.

I'm reluctant to mention the controversial and many say bogus “Grinnells” (my nephew is a student at Grinnell College in Iowa) except to say they lost a complicated court trial in 1922 regarding their authenticity or lack thereof. Now with “new evidence”, *Gibbons Stamp Monthly* reports all 36 Grinnells are for sale by Mystic Stamp Company for \$1.5 million. A mystery?

The last sale of the highly regarded Dawson Cover, which includes two genuine Missionaries, went for over \$2 million. The famous cover is pictured on Hawaiian Missionaries souvenir sheet US 3694 issued in 2002.

Bing Crosby (US #2850) sang *Sweet Leilani* in *Waikiki Wedding*. He was a close friend of Harry Owens who wrote the song and was Bandleader at the Royal Hawaiian Hotel for decades beginning in 1934. Owens was a Hawaiiophile and named his daughter *Leilani* (heavenly flower).

Another entertainer who may get her picture on a stamp someday is Bette Midler. Raised in 'Aiea & schoolmate of tour guide Cousin David, she middle-named her daughter *Alohilani*.

In 2012, the US Post Office issued a set of five different “hang ten” aloha shirt stamps. So far, I haven't seen and real stamps of Barack Obama nor his former Secretary of Veterans Affairs, Erick Shenseki, who also lived in Hawaii. The 2015 Scott's catalog lists the unique Hawaii Missionary #1 on Cover at \$2,250,000.00 based on a 2013 auction sale!





# OAHU'S NEWEST "BID BOARD"

Boards close at noon on Saturday.

Hundreds of coins to choose from!

## Ali`i Coins in Kaneohe

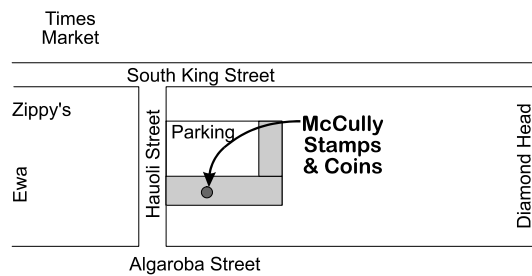
Located in the Windward City Shopping Center at the  
base of the Likelike- where the Likelike, Kam Hwy and  
K-Bay Drive meet. (808) 236-2646

### McCully Stamp and Coin

939 HAUOLI STREET, SUITE 2  
HONOLULU, HAWAII 96826-2655  
Phone: (808) 949-8150  
Open Mon. - Sat. 9:30AM to 5:30PM

We buy and sell Stamps, Coins,  
Postcards, and many other collectibles.

The largest weekly bidboard in Hawaii.  
Almost 2000 items each week. You will  
find much material of interest to you.



## Selected Hawai'i Post Releases

Information from Hawai'i Post website [www.hawaii-post.com](http://www.hawaii-post.com)

### March 12th 2009 - Hawai'i Cruise Ships

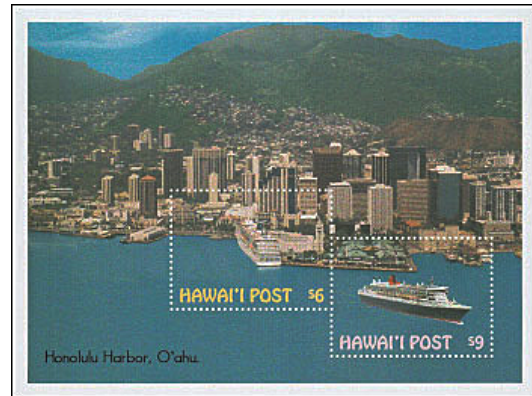
Two stamps and a minisheet were issued on March 12th 2009 depicting Cruise Ships that have visited or are based in the Hawaiian Islands.



The \$6 stamp prepays the Overnight rate. It shows the Norwegian Cruise Lines cruise ship "Pride of America" which is based in Hawai'i. It does two or three 7-day cruises of the Hawaiian Islands each month.



The \$9 stamp (above right) prepays the Same Day rate. It shows the Cunard Lines cruise ship "Queen Mary 2" of British registry and based at Southampton, England. The ship recently visited Honolulu (March 2009) on the way to Pago Pago in American Samoa on a round the world cruise.



The \$15 minisheet (above) prepays the Same Day rate and the Overnight rate. The overall design of the minisheet is an aerial view of Honolulu Harbor. The minisheet contains 2 stamps within the design with simulated perfs and each shows a different cruise ship. The \$6 stamp shows the port side and rear view of the cruise ship "Pride of America" docked next to the Aloha Tower (at right of stamp). The \$9 stamp shows the cruise ship "Queen Mary 2" leaving port



#### Technical details of the stamps:

Colors: Multicolored  
Size: Individual Stamp - 38mm x 50mm.  
Minisheet - 102mm x 76mm.  
Stamp sheet size: 30 (6 across, 5 down)  
Perforation: Perf 12. Minisheet - imperf with simulated perfs around stamps within the design.  
Stamps design: Enelani.  
Layout & Pre-press: Enelani.  
Printer: Hawai'i Security Printers, Honolulu, Hawai'i.  
Printing Method: 4-color (Cyan, Magenta, Yellow and Black) printing process.  
Sheet margin markings: HAWAI'I POST (top middle), "Traffic Light" showing 4 colors used in printing (lower left side), © 2009 Hawai'i Post (lower right side) & Hawai'i Security Printers, Honolulu, Hawai'i. (bottom middle)  
Paper: GPA coated white stock with water-activated gum on the back

*Editor's Note: I had an opportunity to take a cruise on the "Pride of America" a couple of years ago. Fantastic trip starting and ending in Honolulu (Oahu) with stops in Kahului (Maui), Hilo (Hawaii), Kona (Hawaii), and Nawiliwili (Kauai). One highlight of the trip was a night cruise past the lava flows along the Volcanos National Park at night.*



### **June 10th 2010. Hawai'i on Film.**

Three stamps and a minisheet were issued on June 10th 2010 depicting Hawai'i on film.

The \$2.50 stamp pays for extra charges, such as additional weight. It shows a pirate ship and a Jolly Roger (skull and crossbones flag) with the caption "Pirate Ship Adventures". Disney Studios new movie "Pirates of the Caribbean - On Stranger Tides" is being shot on Kauai as we write this webpage. The pirate ship shown is a photo of one depicted in previous "Pirates of the Caribbean" films.



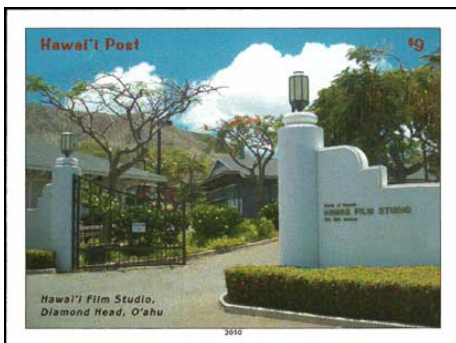
The \$6 stamp prepays the Overnight rate. The caption reads "Plane crash at Mokule'ia Beach". This beach was one of the places where the Emmy-award winning ABC television series "Lost" was filmed for 6 seasons in Hawai'i. The stunning pristine beach is located on the north shore of O'ahu, a few miles west of the town of Hale'iwa. Some background actors remarked that between takes, you could see turtles swimming in the crystal clear ocean waters.

The \$9 stamp prepays the Same Day rate. It shows a "Honolulu Police" squad car and a police barrier outside a bank in Honolulu with the caption "Crime drama". CBS is currently remaking the "Hawaii Five-O" television series which is being shot on the island of O'ahu in many different locations.





The vertical border of all 3 stamps show the typical edges of 35mm movie film.



The \$9 minisheet prepays the Same Day rate. It shows the entrance to the Hawaii Film Studio at the foot of Diamond Head, Oahu. This Film Studio is state-owned and leased to production companies - most recently to ABC for the "Lost" television series. It is now the home of a new ABC television series called "Off the Map" which has not aired yet. The new show is about a group of U.S. doctors practicing medicine in the Amazon jungle in South America.

Movies have been made in Hawaii almost since the the beginning of the motion picture industry. The CBS "Hawaii Five-O" television series which ran from 1968-80 was one of the most successful and put Hawaii firmly on the map. This was followed by "Magnum P. I." from 1980-88 and later the Emmy award-winning ABC television series "Lost" which ran for six seasons. Large budget movies shot in Hawaii include "Waterworld", "Windtalkers", "Pearl Harbor" and many others. There has been a flurry of new

activity in 2010 with the remake of the "Hawaii Five-O" television series being shot on Oahu. Also, the Disney movie "Pirates of the Caribbean - On Stranger Tides", the fourth in the series, George Clooney's "The Descendants" and Adam Sandler's "Just Go With It"

With its tropical interior and beaches, Hawaii has doubled for Brazil in "The Rundown" and the Caribbean in "Pirates 4". Downtown Honolulu with its high rise buildings and busy streets has doubled for many cities across the world. Hawaii is the only place in the USA where you can shoot a movie in a tropical jungle! The Hawaii Film Studio (on the minisheet) located at the foot of Diamond Head has been the sound stage for many movies & television shows, most recently ABC TV's "Lost" and now the new series "Off The Map".



The special postmark for this issue (above) shows a typical movie reel with some 35mm film in it.

### Technical details of the stamps and mini-sheet:

Colors: \$2.50, \$6 & \$9 stamps and \$9 mini-sheet - Multicolored  
 Size: Stamps - 32mm x 44mm. Minisheet - 64mm x 45mm.  
 Stamps sheet size: 30 (6 across, 5 down).  
 Perforation: Stamps - perf 12. Mini-sheet - imperforate.  
 Stamps and Mini-sheet design: Enelani.  
 Layout & Pre-press: Enelani.  
 Printer: Hawaii Security Printers, Honolulu, Hawaii.  
 Printing Method: 4-color (Cyan, Magenta, Yellow and Black) printing process.  
 Sheet margin markings: HAWAII POST (top middle), "Traffic Light" showing 4 colors used in printing (lower left side), © 2010 Hawaii Post (lower right side) & Hawaii Security Printers, Honolulu, Hawaii. (bottom middle)  
 Paper: GPA coated white stock with water-activated gum on the back.



HAWAII'S HISTORY COMES ALIVE AT

# Hawaiian Islands Stamp & Coin



Pre-Cook Hawaiian artifacts.



Old Hawaiian Documents.



Hawaiian books & periodicals.



Hawaiian coins, tokens, medals.



Hawaiian Monarchy items.



Hawaiian stamps & letters.



Hawaiian prints & paintings.

AND MUCH, MUCH MORE!

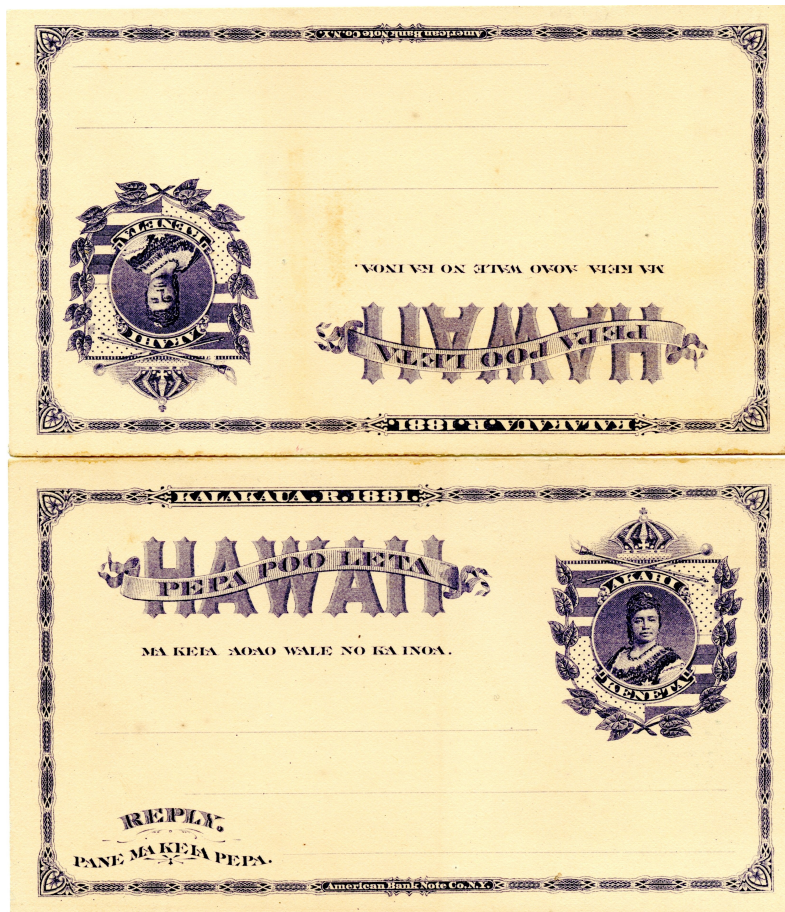
Feel free to stop in and browse through our extensive inventory. Our stock includes many rare and unique items as well as material for the general collector. We welcome the opportunity to assist you with your needs in coins, currency, stamps and Hawaiiana.



Don Medcalf, President  
ANA, HSCDA

Hawaiian Islands Stamp and Coin  
1111 Bishop Street • Honolulu, HI 96813  
(808) 531-6251

Corner Bishop & Hotel • Mon-Fri 9-5, Sat 10-4



Hawaii Scott UY1

# Hawaiian Philatelic Society at WESTPEX 2015

*By Greg Chang*

---



**T**he Hawaiian Philatelic Society held a meet and greet session this past April at WESTPEX 2015. It was held in the Bayside I Room of the San Francisco Airport Marriott Hotel in Burlingame, California. The session was facilitated by HPS auctioneer Ben Gale and was attended by over 20 people. The attendees included current, former, HPS members as well as a few show dealers and curious show attendees.

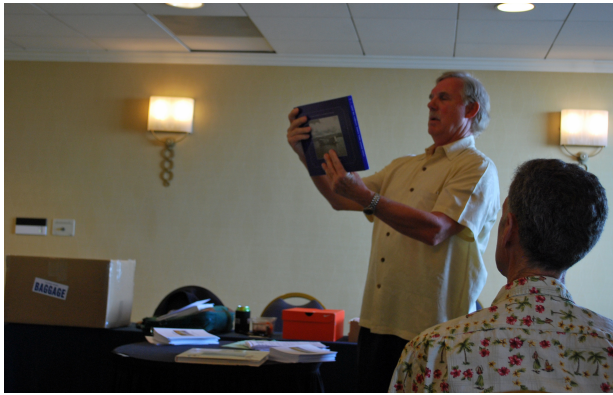
All that attended received a copy of “Hawaiian Philatelic Society – A Brief History”, a bar of Filthy Farm Girl Soap (Special HPS Edition), and cache HPS envelopes. They also had an opportunity to purchase books available through the society.

Ben went over the history and goals of the Hawaiian Philatelic Society. As previously noted, a copy of Hawaiian Philatelic Society – A Brief History by Phill Mendel was provided to the attendees. The booklet covers the Society’s history from 1911 to 2014.

Several services that the society provides were also discussed. One topic was Expertizing - What it costs to have an item expertized and the turn around time. Another topic brought up was the monthly auction - How to get an auction list and how to place a bid. One thing being explored is having the monthly newsletter (includes the auction listing) being sent out electronically.

All in all it was a worthwhile meeting to attend. Unfortunately, I was unable to attend the post meeting dinner at a nearby restaurant. There is a good possibility that more of these meetings will be held in the future.





**Ben Gale at work hosting the meet and greet session**



**Interested attendees**



**Ben with PO'OLEKA Editor Greg Chang and wife Tina Chang**

# HAWAII

*STAMPS, COVERS, PROOFS, ESSAYS*  
**BUYING & SELLING**



Hawaii #R9a Imperf. Block of Four  
20 Cent Red, 1894. World Class Rarity

**PACIFIC MIDWEST CO.**

P.O. Box 730818

SAN JOSE, CA 95173

408-532-7100

EMAIL: [GARYUCB@AOL.COM](mailto:GARYUCB@AOL.COM)

***WE ARE A WORLD CLASS HAWAIIAN DEALER***

ASDA APS Hawaiian Philatelic Society China Stamp Society



# ***WE ARE ALWAYS BUYING CHINA & HAWAII***

*We're not just  
monkeying around!*



Get the most \$\$ today



*& ship your stamps to:*

## **Classic Asia Pacific Stamps & Covers**

**Attn: Stephen Inklebarger, Philatelist**

Box 1171, Chehalis, Washington 98532

360-451-9205 - [inkle@comcast.net](mailto:inkle@comcast.net)

HPS life member, NSDA & APS Dealer Member



*(left Blank)*

*(Left Blank)*

# The Hawaiian Philatelic Society

## 2016 Officers

President	Wayne T. Yakuma
First Vice President	Glenn Yokoyama
Second Vice President	Vacant
Secretary	Jerry C Coiner
Treasurer	Kay H. Hoke
Auctioneer	Ben Gale
APS Representative	Phillip C. Mendel

## PO'OLEKA O HAWAII

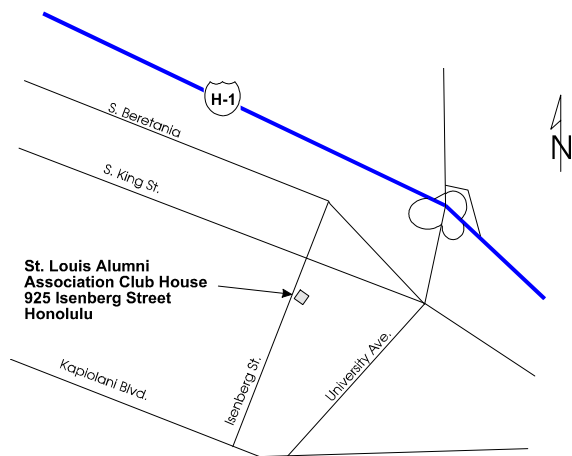
Editor Greg Chang

## Expertizing Committee

Chairman Don Medcalf

## Monthly Meeting

The Hawaiian Philatelic Society meets from 7 PM to 9:30 PM on the second Monday of each month at the St. Louis Alumni Association Club House in central Honolulu. Each meeting includes a short business session, a program or slide presentation and an auction of about 125 lots. We invite you to attend, meet your fellow members, enjoy the program, and talk stamps. The public is welcome at all our meetings and we encourage you to become a member.



Published semi annually by the Hawaiian Philatelic Society, P.O. Box 10115, Honolulu Hawaii 96816-0115

Subscriptions \$8.00 per year. All paid up members receive a subscription as part of their membership. General information can be found at: <http://www.stampshows.com/hps.html>

Display advertising accepted at the following rates per issue:

Full page \$40.00, Half page \$20.00, Quarter page \$10.00.

Deadline for ads is the first day of March and September for the July and January issues respectively. Submit ad copy with remittance to the Editor.

Articles and information for the publication should be sent to the Editor, C/O The Hawaiian Philatelic Society, P.O. Box 10115, Honolulu, Hawaii 96816-0115 or by e-mail at [GREGG353@GMAIL.COM](mailto:GREGG353@GMAIL.COM). Contact the editor for guidelines for preparing text and illustrations for submittal. It's easy to do.

Cover Illustration: First Flight Cover from Canton Island to Honolulu

© 2016 The Hawaiian Philatelic Society. No portions of this work may be used or reproduced in any way without the written permission of the Society.