

PO'OLEKA O HAWAII



A Postcard to Henry Berger
"The Father of Hawaiian Music..."

Queen Liliuokalani



The Quarterly Journal of the Hawaiian Philatelic Society

Number 53

October, 1995

Quarterly Calendar of Collector's Events

NOVEMBER, 1995

- | | | |
|---------|--------------------------------|--|
| 11/5 | First Sunday Bourse, See Ad | Queen Kapiolani Hotel, 150 Kapahulu Ave. 10.00AM - 5:00 PM |
| 11/9-12 | HNSA Coin Show | Queen Kapiolani Hotel, See back cover for times. |
| 11/13 | Windward Oahu Philatelic Soc. | Lois Opedal, 241 Kaha St., Kailua 7:30 PM. |
| 11/18 | H.P.S. Stampers Youth Club | Manoa School, 3155 Manoa Rd. 1:00-3:00 PM. |
| 11/19 | H. S. & C. D. Bourse | Richards Street YWCA, 9:30 AM - 3:30 PM |
| 11/20 | H.P.S. Regular Meeting | Nuuanu YMCA, Doors open around 7:00 PM. |
| 11/27 | H.P.S. Executive Board Meeting | Nuuanu YMCA, Doors open around 7:00 PM. |

DECEMBER, 1995

- | | | |
|-------|--------------------------------|--|
| 12/3 | First Sunday Bourse, See Ad | Queen Kapiolani Hotel, 150 Kapahulu Ave. 10.00AM - 5:00 PM |
| 12/11 | H.P.S. CHRISTMAS Meeting | Nuuanu YMCA, Doors open around 7:00 PM. |
| 12/16 | H.P.S. Stampers Youth Club | Manoa School, 3155 Manoa Rd. 1:00-3:00 PM. |
| 12/18 | Windward Oahu Philatelic Soc. | Lois Opedal, 241 Kaha St., Kailua 7:30 PM. |
| 12/27 | H.P.S. Executive Board Meeting | Nuuanu YMCA, Doors open around 7:00 PM. |

JANUARY, 1995

- | | | |
|------|--------------------------------|--|
| 1/7 | First Sunday Bourse, See Ad | Queen Kapiolani Hotel, 150 Kapahulu Ave. 10.00AM - 5:00 PM |
| 1/8 | H.P.S. Regular Meeting | Nuuanu YMCA, Doors open around 7:00 PM. |
| 1/13 | H.P.S. Stampers Youth Club | Manoa School, 3155 Manoa Rd. 1:00-3:00 PM. |
| 4/15 | Windward Oahu Philatelic Soc. | Lois Opedal, 241 Kaha St., Kailua 7:30 PM. |
| 4/22 | H.P.S. Executive Board Meeting | Nuuanu YMCA, Doors open around 7:00 PM. |

THE HAWAIIAN PHILATELIC SOCIETY 1994 Officers

President	Mr. Wayne T. Yakuma
First Vice President	Mr. Peter W. Burk
Second Vice President	Mr. Raymond M. DeHay
Secretary	Vacant
Treasurer	Mr. Kay H. Hoke
Auctioneer	Mr. Oran D. Spotts
APS Representative	Mr. Louis A. Howard

PO'OLEKA O HAWAII

Editor	Mr. Louis Loucks
Associate Editor	Mr. Peter W. Burk

Published quarterly by the Hawaiian Philatelic Society, P. O. Box 10115, Honolulu, Hawaii 96816-0115.

Subscription \$8.00 per year. All paid up members receive a subscription as a part of their membership.

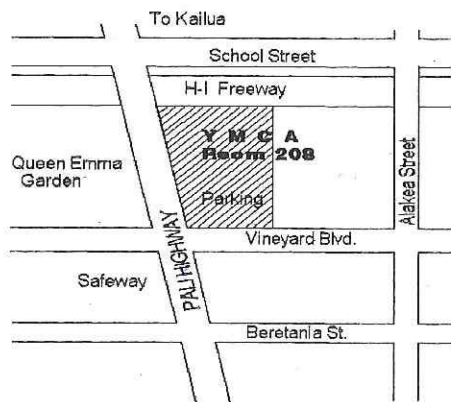
Display advertising accepted at the following rates per issue: Full page \$40.00, Half page \$20.00, Quarter page \$10.00. Deadline for ads is the first day of March, June, September or December. Submit ad copy with remittance to the Editor.

Articles and information for the publication should be sent to the editor. Send a #10 SASE to the Editor for guidelines for preparing text and illustrations for submittal. It's easy to do.

Cover Illustrations: Henry Berger, Queen Liliuokalani and Sanford Dole in 1959, Bishop Museum.
Nauru Postcard, Paul Edney, Hawaiian Postmarks, Gerald Kwock

Monthly Meeting and Monthly Swapmeet

The Hawaiian Philatelic Society meets at 7:30 PM on the second Monday of each month at the Nuuanu YMCA in central Honolulu. Each meeting includes a short business session, a program or slide presentation and an auction of about 125 lots. A Swapmeet and board meeting is held at 7:00 PM on the fourth Monday of each month at the same location. We invite you to attend, meet your fellow members, enjoy the program and talk stamps. The public is welcome at all our meetings and we encourage you to become a member.



PO'OLEKA O HAWAII

The Quarterly Journal of the Hawaiian Philatelic Society
Number 53 October 1995

Now You See It, Now You Don't!

A 1914 Postcard from German Nauru to Captain Henry Berger in Hawaii emerges after fifty years and then disappears again.

Paul Edney

Last January, 1995, I was reading through the Honolulu Advertiser and saw a large display ad for a Hawaiiana auction the following Saturday. What piqued my interest was a long list of various collectibles including stamps, postcards and interesting personal effects of Captain Henry Berger, the bandmaster of the Royal Hawaiian Band from 1872 to 1915.

Henry Berger was born on August 4, 1844 in Potsdam, Prussia (now Germany). At 17, he joined the Prussian army as a musician, at the same time entering the Conservatory of Military Music in Berlin. In 1871, he was appointed leader of the band of the Second Life Guards of Kaiser Wilhelm I. In 1872 at the request of King Kamehameha V, Berger was granted official



The Royal Hawaiian Band with Captain Berger, Early 1900's

leave for four years from the Prussian army, and took passage on the steamship "Mohongo" arriving in Honolulu June 3, 1872. His first public concert was on Kamehameha Day, June 11, 1872. In 1876, he visited Prussia for six months but returned to Honolulu for good in June 1877.

Henry Berger and the Royal Hawaiian Band played regular weekly concerts at Emma Square on Saturday afternoons. They also played at steamer arrivals and departures, royal and public occasions and throughout the islands. He provided the orchestra for royal balls, wrote and performed music for royal funerals. All told, Captain Berger spent 43 years as the Band Master of the Royal Hawaiian Band, during which he gave more than 32,000 concerts. During King David Kalakaua's reign the band's budget reached as high as \$4,000.00 per month, a lot of money for the 1880's..

Queen Liliuokalani referred to Captain Berger as "the Father of Hawaiian Music". He arranged for the preservation of more than 200 native Hawaiian tunes, in addition to composing 75 Hawaiian songs of his own. He also wrote more than 1,000 pieces including special marches. Captain Berger's best known composition is "Hawaii Pono" with words written by David Kalakaua, which was adopted as the Kingdom of Haaii's national anthem and continued as the territorial and state anthem. One of Hawaii's best known love songs, "Aloha Oe", composed in 1878 by Lydia Liliuokalani was arranged by Captain Berger and presented to the public for the first time in 1883. Captain Berger was awarded the decoration of Knight Commander of the Royal Order of Kapiolani by Queen Liliuokalani. Retiring from the band in 1915, Captain Berger died of pneumonia on October 14, 1929 at the age of 85.

In 1914, on the occasion of his 70th birthday, Berger was successful in arranging for Liliuokalani and Sanford Dole to meet and pose for a picture, which is reproduced on the cover. They had never spoken since the Hawaiian revolution, 21 years before. From the expressions on their faces, all is not yet forgiven or forgotten.

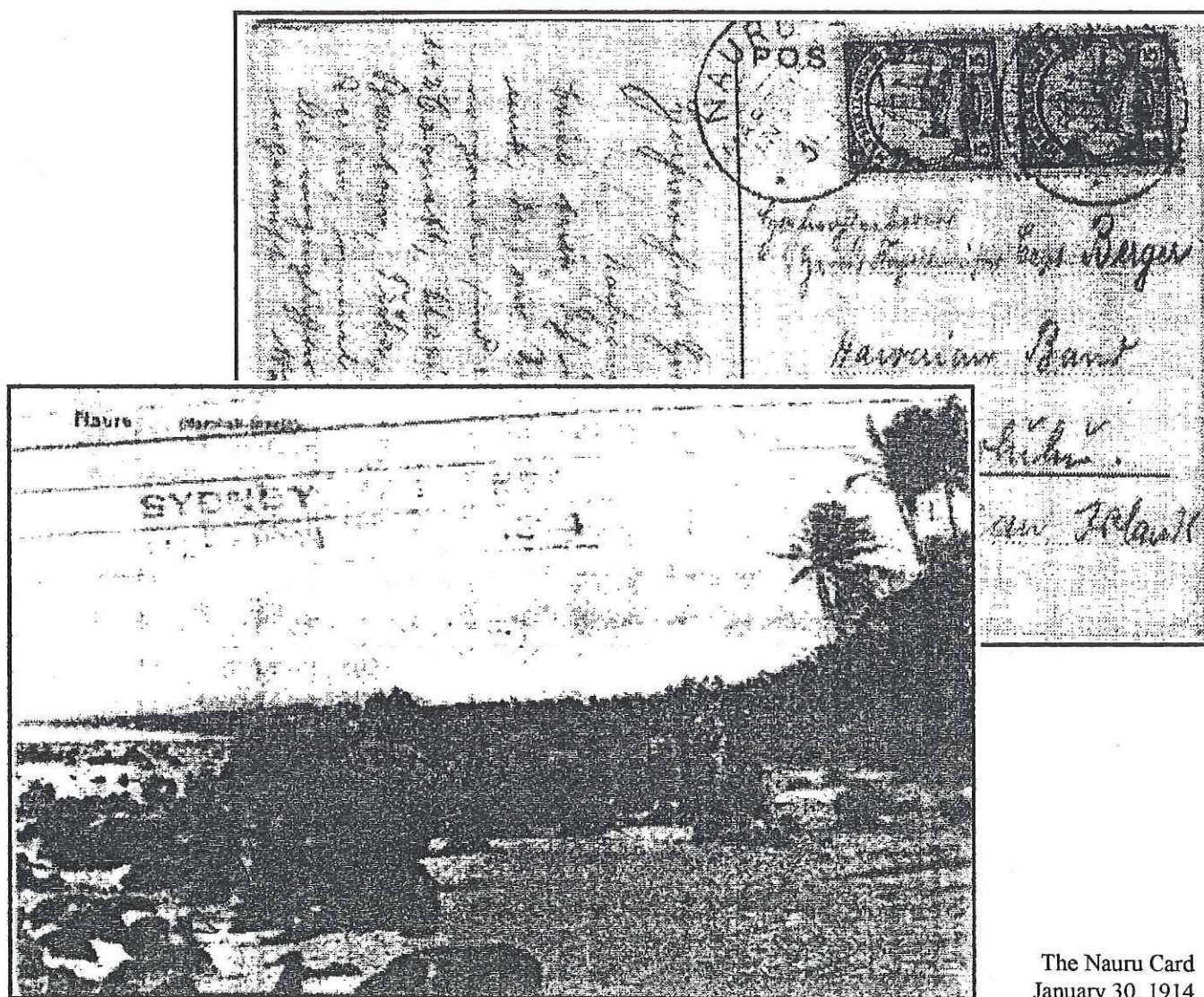
One of his descendants must have inherited the many items that were up for auction that Saturday. Whoever it was eventually stopped paying the rent on a public storage room. The contents were sold at auction, sight unseen for \$175.00. Among the items were seven years of Captain Berger's diaries including those written during the overthrow and imprisonment of Queen Liliuokalani, with whom he was very close. In fact the Royal Hawaiian Band was so loyal to the monarchy that in 1893, the members refused to sign allegiance to the new Provisional Government.

That Saturday, I walked to the Ilikai Hotel in Waikiki where the auction was being held. The items were laid out on tables and against the walls. The stamp collections were in very poor condition. Most were on heavily toned pages and this had spread to the stamps. There were no Hawaiian stamps anywhere. The postcards were either loose in boxes or pasted into collages in picture frames. Most were from relatives, friends and fans addressed to Captain Berger from the mainland and overseas. One particular collage caught my eye. It included a photo of Captain Berger and an old news clipping about him. These two items were surrounded by four postcards, all pasted to the backboard with the address/message side showing. One card really stood out. In fact, I could not believe what I was seeing. I had to walk away twice and come back again before I could convince myself that it was real.

The postcard in question was written in German on January 30, 1914 from a W. Peters and addressed to Captain Berger, Hawaiian Band, Hawaiian Islands. the card bore two 5 pfennig green German Marshall Islands stamps (Scott #14) with two clear "Nauru, Marshall Inseln" postmarks of January 31, 1914. Before World War I, Nauru was a German possession. Later in 1914 Australian forces took possession of Nauru so this card was sent in the last few months of use of the strike, although British stamps overprinted Nauru were not introduced until 1916. As the card was pasted to the back board, I had no idea of what was on the other side. For all I knew, it could have been Santa Claus or a birth-

day poem. The address side was enough for me and I was determined to get it when the auction started. Not wishing to make myself conspicuous by staring at the collage, I decided to keep away and watch from a safe distance to see if anyone else spent too much time looking at it. Earlier I had noticed another very knowledgeable local dealer. I knew that if he saw the postcard I would be up against some formidable competition for it. As luck would have it, I never saw him look at the collage.

any reserves, but there were some ridiculously high reserves. Most lots were passed by without a single bid despite the auctioneer dropping and dropping the starting price. All the collages were starting at \$100.00, which was very high. However, I figured that the lot I was after was worth considerably more than \$100.00. I put up my hand at the last moment, but there were no other bids so the lot was mine at \$100.00 plus the 10% buyers fee.



The Nauru Card
January 30, 1914

o me, the auction was one of the worst conducted I have ever attended. First of all, the lots were not sold in numerical sequence. The bidders spent the whole auction shuffling through the printed list of lots to find the next lot up for bid. Secondly, the bidders were not informed of

As you can imagine, I was eager to get the collage home and somehow remove the postcard from the backing. There were three other cards stuck to the board. I pulled the worst looking one off and discovered that it was attached by four loops of scotch tape, one at each corner of

the card. I decided that with a thin pair of scissors, I could cut through each loop and free the card. Remember that the tape loops were attached to the picture side of the postcard so I had to be very careful. I took a deep breath, cut the sides of the loops on the Nauru postcard and it came away cleanly. Finally I got to see the picture side and I was very pleasantly surprised.

No, it was not Santa Claus or a birthday poem, but a black and white beach scene of Nauru with palm trees on the shore and rocks or coral stumps strewn across a sandy beach with the Pacific Ocean in the background. At the top left was printed "Nauru (Marshall-inseln)". Also at the top, running across the whole length of the card was a transit postmark composed of four thin straight lines with the words "SYDNEY NSW" and on the next line "Fe 12 1914". Obviously the postcard had taken twelve days to reach Sydney, Australia by ship and then had been sent on to Hawaii. There was no postmark indicating the arrival date in Honolulu.

I now had this exceptional postcard, graced with the remains of the four scotch tape loops firmly attached to the picture side. I tried removing one of the loop remnants from the worst postcard by peeling it off very slowly. Each time I damaged the picture side. The tape loops were probably attached sometime in 1944, the date of the news clipping. The 50 year old glue was not going to come off easily. I remembered reading in a stamp magazine that regular watermark fluid would dissolve the glue and not leave a trace of residue behind. I experimented on the other cards a little and had soon found the best method. I took another deep breath and pretty soon I had all the loops removed completely from my Nauru card. For all its 81 years, it was in very good shape. No tears or rounded corners, no scuffs, almost in pristine condition. After putting it in a thick poly sleeve, I sat back, relaxed and examined my treasure for a while. There was one more puzzle to be solved. What did the German writing say?

The following Sunday, I was holding my regular First Sunday Hawaii Stamp, Cover and Card Show at the Queen Kapiolani Hotel in

Waikiki. I brought the postcard along to show to the other dealers and interested collectors. It was the talk of the show. I had decided by this time to keep it in my collection and not to sell it, even though I had put a price of \$500.00 on it. I had been told that was what it was worth by a very knowledgeable mainland German postcard collector and a good friend of mine. As luck would have it, a German tourist came into the show asking for German stamps. I asked if he would be kind enough to translate the message on the postcard, which he did. He had some difficulty because he said it was written in an old style German. On the card W. Peters is asking Captain Berger if he has some various musical instruments available - presumably to send to Nauru.

Unfortunately, under mysterious circumstances, the postcard disappeared at the show. Despite reconstructing the whereabouts of the card from the time I arrived at the show until it disappeared, no one has been able to figure out where it went. It was very disheartening for me as I gone to a lot of time and trouble to obtain the postcard. Isn't it strange that this card was considered of little value in 1944, when it was attached by scotch tape to a board and then did not resurface until over 50 years later in a public storage room and then an auction? Its philatelic value was treasured for seven days, shown to a privileged few and then it disappeared again - hopefully not for another fifty years. Fortunately, I took some photocopies of the postcard which are reproduced here.

If you have seen this postcard recently, please contact the author at (808) 923-1156 or mail it to P.). Box 8391, Honolulu, Hawaii 96830. We would greatly appreciate any information we could get.

For information on Henry Berger and the Royal Hawaiian Banc, See HAWAIIAN MUSIC AND MUSICIANS, George S. Kanahale, Editor, University of Hawaii Press, 1979, pages 34-44, 335-344.

Paul Edney is a member of the Hawaiian Philatelic Society, a local dealer in Stamps and Postcards and an enthusiastic researcher into local history.

KEOMUKU, LANAI

Dates of Operation: 1899 - 1900

Postmasters:

1899-1900 L. M. Vettlesen

Located on the southeast coast of Lanai and directly across Auau Channel from Lahaina, Keomuku was the major landing place for the island. The community is spread along the beach but there is little suitable land for agriculture, so it never developed beyond a subsistence village until employment at the Dole plantation was available.

10/23/1995

KEOMUKU
Lanai

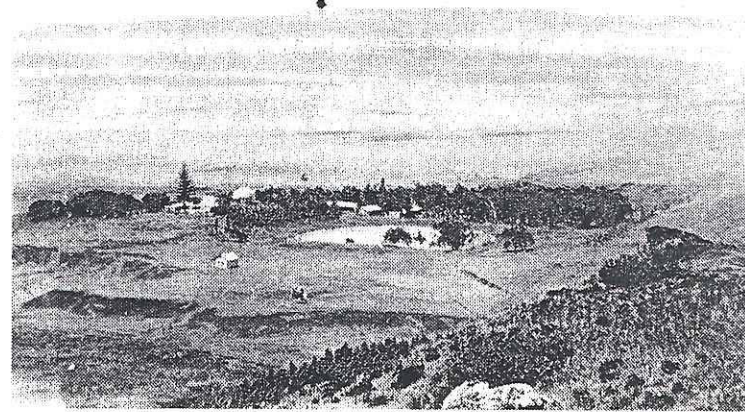
KOELE, LANAI

Dates of Operation: 1882 -1900

Postmasters:

1880 W. M. Gibson
1881-1892 J. Moorhead
1898-1900 Mrs. T. L. Haselden

In the early 18960's Walter Murray Gibson, acting as the leader of the local Mormon congregation, purchased the lands of Palawai on Lanai and transferred the Mormons to that place. the principal settlements were Palawai and Koele which later became Lanai City. In 1864, acting on information regarding irregularities in the affairs of the community, Gibson was excommunicated and the members were offered the choice of remaining with him or leaving the island for a new start elsewhere. Gibson held the titles to all the Lanai lands, which he refused to give up and the island became his private estate. He ran it as a ranch and a retreat. Gibson acted as the first postmaster at Koele and Mrs. Haselden was his daughter Talulah.



Koele Town about 1918

Bishop Museum

10/23/1995

KOELE
Lanai

KOELE, LANAI

No Known Cancellations

KOELE
Lanai

10/29/1995

KEOMUKU, LANAI



255.01 (FWF)
29 mm. Dia. Purple
9/99 - 5/00

KEOMUKU
Lanai

10/29/1995

HONOMUMI, MOLOKAI

Dates of Operation 1878 - 1882

Postmasters:

1882 J. Lima

The Honomuni district is located on the southeast coast of Molokai and included the settlement at Kainalu. It was the birthplace of the powerful chief Abner Paki, later the governor of Oahu. When the Hawaiian government purchased the lands of the Makanalua peninsula for the Leper settlement, the residents who were displaced were given good lands at this place. There are old fish ponds here and a flat plain with water suitable for agriculture. It continued as an area of small farms throughout the Kingdom period.

As is true of most of Molokai, this area was depressed throughout the Kingdom period. There are few descriptions of the area as it was not on the normal tourist route.

10/23/1995

HONOMUMI
Molokai

KALAWAO, MOLOKAI

Dates of Operation: 1875? - 1900

Postmasters:

1884 ? Straun
1886 A. Hutchinson
1900 W. Clark

In 1865 the Government singled out the Makanalua Peninsula on the north shore of Molokai as the site for the main Leper settlement. It purchased the lands of Kalawao and Waileia from the residents and also gave them other lands at Honomuni and other places. The first lepers were established at Kalawao on the eastern side of the peninsula. Agriculture was already established and it was hoped that the patients would raise crops and make the station to some extent self sustaining. This was not to be, and the settlement existed largely on government rations and services, which were scanty and irregular. Kalawao was the site of Father Damien's church and adjacent to the later Baldwin Home and government hospital before medical services were transferred to Kalaupapa settlement.



Kalawao Settlement ca. 1880. Bishop Museum

10/23/1995

KALAWAO
Molokai

KALAWAO, MOLOKAI

No Known Town Cancels.

HONOMUNI, MOLOKAI

No Known Town Cancels.

KALUAAHA, MOLOKAI

Dates of Operation: 1856 - 1882

Postmasters:

1858	J. S. Low
1859	S. G. Dwight
1866	A. O., Forbes
1869	E. H. Rogers
1875	R. Newton
1879	J. Lima

In November, 1832 the Reverend Hitchcock established the first mission station on Molokai at this place, located about twelve miles west of the east point of the island. The land belonged to Auhea, wife of the high chief of Maui who accompanied them on their settlement and ordered the residents to assist them in any way. Molokai was regarded as of such minor importance that this station was only opened up eleven years after the first stations on other islands. There were no resident chiefs and the people were very heavily taxed and compelled to labor for the benefit of absentee owners, which severely depressed their initiative and enthusiasm for work, as they could not advance themselves. Consequently this community, as the rest of the island, remained at more or less a subsistence level throughout the Kingdom period.

10/23/1995

KALUAAHA
Molokai

KAMALO, MOLOKAI

Dates of Operation: 1884 - 1900

Postmasters:

1890-1892	D. McCorriston
1898-1900	H. McCorriston

Kamalo is located on the south shore of the island between Kaunakakai and Pukoo. It was originally a site of Hawaiian subsistence fishing and farming and received some of the people displaced from the Kalaupapa leper settlement.

Kamalo was the site of one of the early attempts to grow sugar on Molokai. The Kamalo Sugar Company was established in 1899 by the McCorristons. It had about 1200 acres planted in cane and employed over 50 laborers to produce as much as 300 tons of sugar annually. The venture failed in the early twentieth century for lack of adequate water supplies.

10/23/1995

KAMALO
Molokai

KAMALO, MOLOKAI



282.046 R 1R (FWF)
32-33 mm Dia. Purple
5/90

282.012 R 7 (FWF)
32-33 mm Dia. Purple
8/91 - 5/00

KAMALO
Molokai

10/23/1995

KALUAAHA, MOLOKAI



238.02 R 1RRRR (FWF)
30 mm Dia. Black
9/82 - 11/82

KALUAAHA
Molokai

10/23/1995

KAUNAKAKAI, MOLOKAI

Dates of Operation: 1858 - 1900

Postmasters:

1875-1892	R. W. Meyer
1898	W. C. Meyer
1899-1900	Mrs. F. W. Carter

King Kamehameha V favored the island of Molokai as a retreat and ranch. He built Malama, his vacation residence, on the Beach at Kaunakakai and stocked the lands to the west with cattle, which were Kapu and allowed to roam freely. He also released the first Axis deer which are still available for sport hunting. The crown lands of Kamehameha V and the adjacent ahupua'a of Kaluako'i later became the Molokai Ranch of some 70,000 acres.

Kaunakakai became the major point of entry on the south coast though it required the later construction of a half mile mole to reach deep water. In 1898 the partners of Molokai Ranch leased an additional 30,000 acres of land from the Hawaiian government and formed the American Sugar Company. The company established a large camp, built a railroad from the mole to the uplands plateau and prepared some 750 acres of land of which approximately 500 acres was initially planted to cane. Eight miles of irrigation ditches were dug and wells drilled in the lowlands. Powerful steam pumps were set up to lift water to the fields. This was a first class, no expenses spared operation. Over \$1,000,000.00 was invested and by 1900 some 1000 acres were planted.

At this point the crops began to fail. It was found that the huge steam pumps had sucked up all the fresh water and were now delivering salt water to the fields, effectively killing all the young cane. The plantation promptly ceased operations and the land reverted to cattle raising until later pineapple plantations were established.

10/23/1995

KAUNAKAKAI
Molokai

PUKOO, MOLOKAI

Dates of Operation: 1882 -1900

Postmasters:

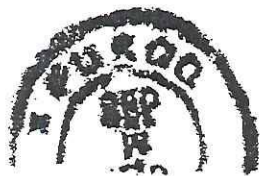
1883	C. B. Dwight
1884-1892	R. W. Meyer
	G. or S. K. Kupihea
1898-1900	J. H. Mahoe

Pukoo was another small village on the southeast coast, in the area where the lands were awarded in the Great Mahele of 1848-1850 which created a class of smallholders who attempted a variety of crops ranging from white potatoes for gold rush California to cotton to meet a demand created by the cutting off of southern supplies during the civil war. Even coffee was tried. R. W. Meier was a very successful entrepreneur at Kalae in the uplands and superintendent of the Kalaupapa settlement for many years. His experiments with various crops helped to sustain the area in its meagre growth, but the area was never largely successful.

10/23/1995

PUKOO
Molokai

PUKOO, MOLOKAI



282.013 R 1RR (FWF)
32-33 mm Dia. Black or Purple
1/83 - 7/99



281.01 R 1R (FWF)
29-31 mm Dia. Black
9/98?

This may not be a legitimate image of this cancel. The original is a poor strike on a dark stamp. the side ornament is ambiguous at best. Floyd Fitzpatrick feels that this is an example of 281.01. Can anyone provide a better strike?

KAUNAKAKAI, MOLOKAI



282.046 R 6 (FWF)
32-33 mm Dia. Purple or Blue
12/82 - 10/90



282.011 R 7 (FWF)
32-33 mm Dia. Purple
1/91 - 4/95



281.01 R 7 (FWF)
29-31 mm Dia. Purple or Red
2/86 - 6/00



255.01 R 6 (FWF)
29 mm Dia. Purple
1/99 - 9/99



MANUSCRIPT CANCEL ca 1871 (FWF)
on two copies of #31 w/ a 9 spike killer similar to MH 73. Stamp and killer suppressed and pen script enhanced.

Hawaii Town Cancel Forum

Louis D. Loucks, Editor

Since the last issue of your journal was produced, I have made a few changes to my computer and these have had a big impact on how things come out. I wish I could say that everything is great, but would I lie to you?

In October I installed Windows '95, in order to get the 32 bit operating system for Autocad, my bread and butter program. My experience was not good. The program neither tells you exactly how to handle memory management nor does it go ahead and handle it on its own. About a week later, we finally tracked down the source of the memory problems and now everything about Windows seems to run well. However, I advise you, before you jump on this bandwagon, to be sure that your programs are upgradable to Windows '95 standards. I can't get a new version of PC Tools, which makes my backups, and virtually all my other programs are taking their sweet time in updating. My scanner absolutely refuses to cooperate with the new Windows, so I am proceeding very slowly with the cancels which are the subject of this column.

This issue includes the fourth group of pages in our cancel book and it's time to look both forward and back to see what is needed to make more complete presentations. First of all, I am still looking for fine full strike cancels of all the islands. So far we have most of Kauai, Lanai, Molokai and Honolulu. Next time we will complete Kauai and start Oahu. When we re-issue the pages, we need better cancels for the following:

KAUAI: Hanalei 238.02, 282.013;
Kilauea 282.016, Lihue 238.02
MOLOKAI: Pukoo 282.013

I am always on the lookout for old photographs of Hawaiian towns or post offices, during the Kingdom pe-

riod if possible. Since the tourists didn't wander around with brownie cameras, these are hard to find for a lot of locations. Postcards would seem to be a good source. If you have any old photos or cards showing how towns looked, please share them with the rest of the members.

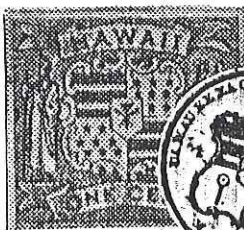
I greatly appreciate the response we have had including cards, cancels, articles and suggestions. I will get more of your material into the journal as we go along.

Read the December Auction list carefully. It includes 35 lots of prime Hawaii cancellations from Gerald Kwock. These are the grids, letters, ship cancels (1), fancy cancels, opium cancels, even a few town cancels. We included a full page illustrating every cancel. I lotted these myself and can tell you that they are a very fine group and priced to sell.

A Collection of Island Memories

The history of Hawaii has been preserved on stamps and coins over the years, and there's no better place to start your collection

of these commemoratives than Ala Moana Stamp & Coin Co.



- Gold & Silver Eagles • U.S. Coins • Proof Sets • Mint Sets • Birthyear Sets • Hawaiian Coins • Hawaiian Medals/Tokens • Money Clips • Hawaiian Stamps • Personality Bills • Misc. U.S. & Foreign Gold Coins • Bullion Gold Coins • Bullion Silver Coins • U.S. Large and Small Size Currency • Gold and Silver Coin Jewelry • Coin and Stamp Supplies • U.S. and Foreign Stamps

Ala Moana Stamp & Coin Co., Inc.

ALA MOANA CENTER near CENTERSTAGE
Tel. 947-3711 ANA LIFE MEMBER #1768 APS #103723

McCully Stamps and Coins

939 HAUOLI STREET, SUITE 2

HONOLULU, HAWAII 96826

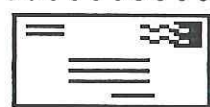
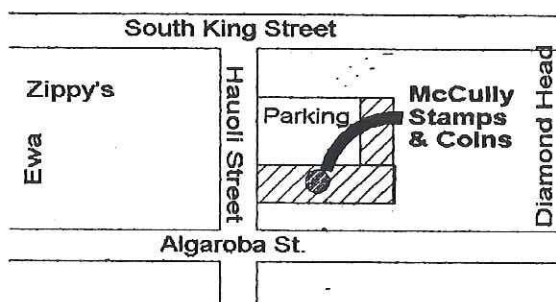
Phone: (808) 949-8150

Open Mon. - Sat. 9:30AM - 5:30PM

We buy and sell Stamps, Coins, Postcards, Sports Cards and many other collectibles.

The largest weekly bidboard in Hawaii. Almost 2000 items each week. You will find much material of interest to you.

Times
Market



BUY - SELL - TRADE

WORLDWIDE STAMPS, COVERS, POSTCARDS, MONEYCARDS, PHONECARDS, PAPER EPHEMERA, AUTOGRAPHS, HAWAIIANA, & PHILATELIC SUPPLIES.

FIRST SUNDAY HAWAII STAMP,

COVER & CARD SHOW

SUNDAY 10am to 5pm

EVERY FIRST SUNDAY OF THE MONTH

NEXT SHOWS: OCT 1, NOV 5, DEC 3

QUEEN'S ROOM

QUEEN KAPIOLANI HOTEL

150 Kapahulu Avenue, Waikiki.

FREE ADMISSION & FREE PARKING

Free parking available on Kapahulu Avenue (No meters on Sundays) plus Monsarrat and Kalakaua Avenues in the Kapiolani Park area across the street. Alternatively, you may park in the hotel garage. \$1 with validation. No time limit.

To get on the mailing list for the show, and be eligible for a total of \$50 IN DOOR PRIZES at each show, please send your name and address to Stamp Show, P.O. Box 8391, Honolulu, Hawaii 96830-0391.

For further information, please call PAUL EDNEY at (808)-923-1156 FAX (808)-923-3537 (24 hrs)

DEALER BOOTH SPACE AVAILABLE.

HAWAII'S HISTORY COMES ALIVE AT

Hawaiian Islands Stamp & Coin



Pre-Cook Hawaiian artifacts.



Old Hawaiian Documents.



Hawaiian books & periodicals.



Hawaiian coins, tokens, medals.



Hawaiian Monarchy items.



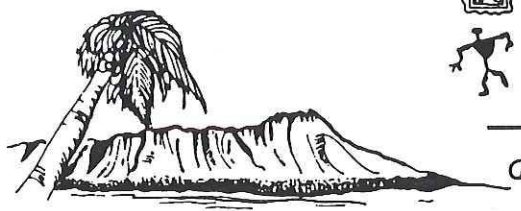
Hawaiian stamps & letters.



Hawaiian prints & paintings.

AND MUCH, MUCH MORE!

Feel free to stop in and browse through our extensive inventory. Our stock includes many rare and unique items as well as material for the general collector. We welcome the opportunity to assist you with your needs in coins, currency, stamps and Hawaiiana.



Don Medcalf, President
ANA, HSCDA

Hawaiian Islands Stamp and Coin

1111 Bishop Street • Honolulu, HI 96813

(808) 531-6251

Corner Bishop & Hotel • Mon-Fri 9-5, Sat 10-4

APROPOS OF NOTHING.....

If you thought things were exciting in the Middle Ages, read on.

The Renaissance was an age in which more individuals felt the value of their human being. Martin Luther was nailed to the church door at Wittenberg for selling papal indulgences. He died a horrible death, being excommunicated by a bull. It was the painter Donatello's interest in the female nude that made him the father of the Renaissance. It was an age of great inventions and discoveries. Gutenberg invented the Bible. Sir Walter Raleigh is a historical figure because he invented cigarettes. Another important invention was the circulation of blood. Sir Frances Drake circumcised the world with a 100-foot clipper.

The government of England was a limited mockery. Henry VIII found walking difficult because he had an abcess on his knee. Queen Elizabeth was the "Virgin Queen". As a queen she was a success. When Elizabeth exposed herself before her troops, they all shouted "Hurrah". Then her navy went out and defeated the Spanish Armadillo.

The greatest writer of the Renaissance was William Shakespear. Shakespear never made much money and is famous only because of his plays. He lived in Windsor with his merry wives, writing tragedies, comedies and errors. In one of Shakespear's famous plays, Hamlet rations out his situation by relieving himself in a long soliloquy. In another, Lady Macbeth tries to convince Macbeth to kill the king by attacking his manhood. Romeo and Juliet are an example of a heroic couplet. Writing at the same time as Shakespear was Miquel Cervantes. He wrote "Donkey Hote". The next great author was John Milton. Milton wrote "Paradise Lost". Then his wife died and he wrote "Paradise Regained".

During the Renaissance America began. Christopher Columbus was a great navigator who discovered America while cursing about the Atlantic. His ships were called the Nina, the Pinta and the Santa Fe. Later the Pilgrims crossed the ocean and this was called the Pilgrim's Progress. When they landed at Plymouth Rock, they were greeted by the indians who came down the hill rolling their war hoops before them. The indian squabs carried proposies on their back. Many of the indian heroes were killed, along with the cabooses, which proved very fatal to them. The winter of 1620 was a hard one for the settlers. Many people died and many babies were born. Captain John Smith was responsible for all this.

Our present state of social and political confusion will become a lot clearer to you when we next discuss America. You will find out how to detect gravity and all about the McCormick Raper.

H & P SALES

P.O. Box 10020

Honolulu, Hawaii 96816-0020

Phone Dick or Kay at (808) 955-4004

We Buy and Sell

Quality Hawaiian Material
including:

Stamps, Coins, Postal Stationery,
Covers and Postal History,
Documents,
Postcards and Photographs.

Estate Appraisals
U. S., Hawaii, Worldwide

Contact us to discuss your material
or collecting interests.

JACKSON'S HOBBY AND STAMP SHOP

835 Ke'eaumoku Street., #201

Honolulu, HI 96814

Tele. (808) 942-2851

Fax (808) 945-3091

**WE BUY AND SELL STAMPS,
COVERS, POSTCARDS, COLLECTIONS**

WE ALSO SELL: Plastic MODEL KITS of

- Autos, Airplanes, Ships, Tanks -**
- Wood Ship Models - Balsa Airplane Kits -**
- Die-cast Metal Autos & Airplanes -**
- Chessmen, Timers, and Chess Sets -**
- Paints, Tools, Supplies -**

BID BOARD & SILENT AUCTION

(1ST AND 3RD SATURDAYS OF EACH MONTH AT 2 P.M.)

Authorized SCOTT Dealer -- Catalogues, Albums, Mounts, Supplies

BEGINNER STAMP COLLECTORS ALWAYS WELCOME

Packets of Topicals and Foreign Countries

Lighthouse VARIO stock sheets

Supplies for all collectors

OPEN Tuesday through Saturday 9:00 A.M. - 5:00 P.M.

Stan Jackson, Owner

HAWAIIAN REFLECTIONS

By Peter Burk

Different Stamps Have Different Meanings to Different People!



IMO IMO HOKU IKI

Twinkle, Twinkle, little star
shining up there very high.
How I wonder what you are,
lighting up HAWAIIAN sky.

Your name is HOKU people say,
IPO HONI 'neath your light.
And in your light the KEIKI play.
IMO, IMO, HOKU bright.



KEIKI O KA HONUA

PU'UHONUA O HONAUNAU

City of Refuge: PU'UHONUA.
Dry coast of KONA - minimum UA.
Place where prisoners gain release;
place of safety and of peace.
Wooden KI'I stands as guard
at the peaceful walled-in yard.



PU'UHONUA and KI'I

HAWAII STATE NUMISMATIC ASSOCIATION
32ND ANNUAL
COIN SHOW
QUEEN KAPIOLANI HOTEL

HOURS:

THURS - NOV 9TH 12 NOON - 8 PM

FRI - NOV 10TH 11 AM - 8 PM

SAT NOV 11TH 10 AM - 8 PM

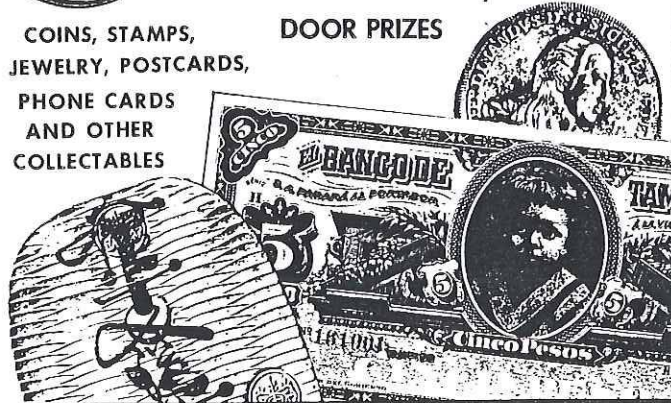
SUN - NOV 12TH 10 AM - 4 PM

ADMISSION \$1.00



COINS, STAMPS,
JEWELRY, POSTCARDS,
PHONE CARDS
AND OTHER
COLLECTABLES

DOOR PRIZES



HAWAIIAN PHILATELIC SOCIETY

P. O. BOX 10115
HONOLULU, HAWAII 96815-0115

**BULK
MAIL**

ADDRESS CORRECTION REQUESTED
FORWARDING AND RETURN POSTAGE GUARANTEED

