

PO'OLEKA O HAWAII



The Quarterly Journal of the Hawaiian Philatelic Society

Number 65

JANUARY 2001

Quarterly Calendar of Collector's Events

JANUARY 2001

01/07	First Sunday Bourse	Queen Kapiolani Hotel, 150 Kapahulu Ave. 10AM - 4 PM
01/08	H.P.S. Regular Meeting	Nuuanu YMCA, Doors open around 7 PM
01/13	H.P.S. Stamps Youth Club	Manoa School, 3155 Manoa Rd. 1 PM - 3 PM
01/14	Hawaii Stamp & Coin Dealers Show	YWCA, Richards Street 9:30 AM - 3:30 PM
01/15	Winward Oahu Philatelic Soc.	Lois Opedal, 241 Kaha St., Kailua, 7:30 PM
01/22	H.P.S. Executive Board Meeting	Nuuanu YMCA, Doors open around 7PM, Board Meets around 7:15 PM

FEBRUARY 2001

02/04	First Sunday Bourse	Queen Kapiolani Hotel, 150 Kapahulu Ave. 10AM - 4 PM
02/12	H.P.S. Regular Meeting	Nuuanu YMCA, Doors open around 7 PM
02/17	H.P.S. Stamps Youth Club	Manoa School, 3155 Manoa Rd. 1 PM - 3 PM
02/19	Winward Oahu Philatelic Soc.	Lois Opedal, 241 Kaha St., Kailua, 7:30 PM
02/23-25	Hawaii Collectors EXPO '01	N.B.C. Fri 4PM - 9PM, Sat 11AM - 9PM, Sun 11AM - 5 PM
02/26	H.P.S. Executive Board Meeting	Nuuanu YMCA, Doors open around 7PM, Board Meets around 7:15 PM

MARCH 2001

03/04	First Sunday Bourse	Queen Kapiolani Hotel, Waikiki
03/12	H.P.S. Regular Meeting	Nuuanu YMCA, Doors open around 7 PM
03/17	H.P.S. Stamps Youth Club	Manoa School, 3155 Manoa Rd. 1 PM - 3 PM
03/19	Winward Oahu Philatelic Soc.	Lois Opedal, 241 Kaha St., Kailua, 7:30 PM
03/26	H.P.S. Executive Board Meeting	Nuuanu YMCA, Doors open around 7PM, Board Meets around 7:15 PM

THE HAWAIIAN PHILATELIC SOCIETY

2001 Officers

President	Wayne T. Yakuma
First Vice President	Victoria L. Bannan
Second Vice President	Raymond M. deHay
Secretary	Vacant
Treasurer	Kay H. Hoke
Auctioneer	Max W. Starr
APS Representative	Harry Foglietta

PO'OLEKA O HAWAII

Editor	Greg Chang
Assistant Editor	Sandy Wong

Expertising Committee

Chairman	Don Medcalf
----------	-------------

Published quarterly by the Hawaiian Philatelic Society, P.O. Box 10115, Honolulu Hawaii 96816-0115

Subscriptions \$8.00 per year. All paid up members receive a subscription as part of their membership

Display advertising accepted at the following rates per issue:

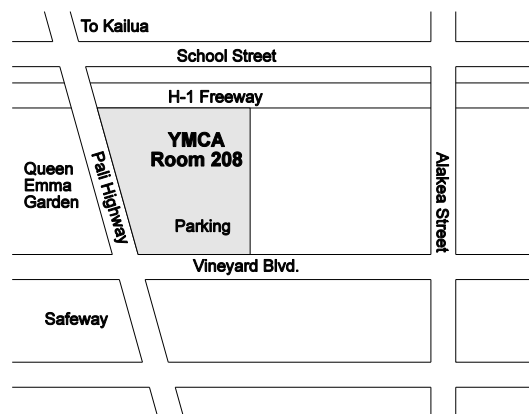
Full page \$40.00, Half page \$20.00, Quarter page \$10.00.
Deadline for ads is the first day of March, June, September or December.
Submit ad copy with remittance to the Editor.

Articles and information for the publication should be sent to the editor. Send a #10 SASE to the Editor for guidelines for preparing text and illustrations for submittal. It's easy to do.

Cover Illustration: French Polynesia Souvenir Sheet Scott No. 706b

Monthly Meeting and Executive Meeting

The Hawaiian Philatelic Society meets at 7:30 PM on the second Monday of each month at the Nuuanu YMCA in central Honolulu. Each meeting includes a short business session, a program or slide presentation and an auction of about 125 lots. A board meeting is held at 7:30 PM on the fourth Monday of each month at the same location. We invite you to attend, meet your fellow members, enjoy the program, and talk stamps. The public is welcome at all our meetings and we encourage you to become a member.



PO'OLEKA O HAWAII

The Quarterly Journal of the Hawaiian Philatelic Society

Number 65

January 2001

Editor's Notes

By Greg Chang, Editor

Aloha and Happy New Year 2001! Seems not too long ago 2001 appeared to be part of the distant future. It has caught up with us and now is the present. So, welcome to the first issue of the PO'OLEKA O HAWAII of the new millennium. Once again, many thanks for your patience and support on editing the PO'OLEKA in the form of feedback, news items, and articles. As always, I need articles as well as items of interest to publish.

The first article details this year's United States Postal Service Lunar New Year Commemorative. This is the ninth stamp of the ongoing lunar new year stamp series all designed by Hawaii's Clarence Lee. This year first day ceremony will take place in Oakland, California.

Speaking of Chinese New Year, details for Hawai'i Post's new year issue are in this issue. Also included is a list of planned releases for the rest of the year.

Leaping back to past commemoratives, in conjunction with Pacific 97, French Polynesia released a set of stamps and a souvenir sheet commemorating the schooners that sailed between San Francisco and Sydney with stops in Hawai'i, New Zealand, and Tahiti.

To round off this issues, included are some snippets by Les Winick as well as information

on album pages available on the Internet.

So, hope 2001 has started off well for you. Take care and until next time...

Greg Chang

Editor



What's Inside

Chinese New Year Commemorated by U.S. Postal Service	2
The Papeete - San Francisco Trading Schooner Link	4
Winick Snippets <i>By Les Winick</i>	5
Stamp Album Web	7
Potpouri	8
Hawai'i Post Release First Issue For 2001	10
Stamp Signature <i>By Peter Burk, Jr.</i>	12

Chinese New Year Commemorated by U.S. Postal Service

Year of the Snake Marks Ninth Postage Stamp in Lunar New Year Series

Information from USPS Website - www.usps.gov

People around the world will celebrate the Lunar New Year on Jan. 24, 2001.

According to the Chinese lunar calendar, that day marks the beginning of the Year of the Snake.

On Jan. 20, the U.S. Postal Service will mark this occasion with the issuance of the ninth stamp in the award-winning Lunar New Year series. A first day of issuance ceremony will be held at 11 a.m. at the Asia Pacific Cultural Center, Pacific Renaissance Plaza, 388 Ninth St., Oakland, CA. The stamp will be available nationwide on Jan. 21.

"The issuance of this postage stamp gives the Postal Service an opportunity to recognize and honor the diversity of our nation," said Benjamin P. Ocasio, Vice President, Diversity Development, U.S. Postal Service, who will dedicate the stamp. "We recognize that the rich histories and traditions provided by the diverse cultures of each and every American help make this a strong nation, just as the Postal Service helps strengthen America by binding the nation together with universal mail service I am honored to help dedicate the Lunar New Year stamp."

Oakland Postmaster Lawrence Barnes will serve as master of ceremonies for the event. Joining Barnes and Ocasio will be the Honorable Jerry Brown, Mayor of Oakland, and Jolie Bales, Managing Director for the Asia Pacific Cultural Center.

Other participants will include George Ong, National President, Organization of Chinese Americans, Hiroko Kurihara, Board President, Asia Pacific Cultural Center, and



Claudine Cheng, Past National President, Organization of Chinese Americans.

The snake, the sixth of twelve animals associated with the Chinese lunar calendar, is a symbol of wisdom and charm. Known for excellent manners, people born in the Year of the Snake are said to be intelligent, philosophical, elegant, and romantic. The first stamp in the Lunar New Year series of twelve was Year of the Rooster, followed by Year of the Dog, Boar, Rat, Ox, Tiger, Hare, and Dragon.

Also called the Spring Festival, the traditional Chinese New Year celebrates the beginning of a new season. It is a time of renewed hope for a prosperous future. In the United States many people enjoy the colorful festivities that the Chinese New Year brings.

The Year of the Snake ends Feb. 11, 2002.

To commemorate the Year of the Snake, artist Clarence Lee created an intricate

paper-cut design of a snake. The Chinese characters-drawn in grass-style calligraphy by Lau Bun-translate into English as "Year of the Snake." The greeting "Happy New Year!" is in English.

Clarence Lee, an American of Chinese descent, was born in Honolulu, HI. After attending Pomona College in Claremont, CA, Lee transferred to the School of Art and Architecture at Yale, receiving a bachelor of fine arts degree in 1958. He worked as a designer in New York before returning to Hawaii in 1966 to open his own design firm.

In 1992, at the request of the U.S. Postal Service, Lee designed a stamp commemorating the Chinese Lunar New Year. Issued Dec. 30, 1992, the Year of the

Rooster stamp was the first in a series featuring each of the twelve animals associated with the Chinese lunar calendar.



TECHNICAL DETAILS

Issue: Lunar New Year - Snake

USPS Item Number: 450300

Denomination & Type of Issue: 34-cent Commemorative

Format: Pane of 20 (1 design)

Series: Lunar New Year

Issue Date & City: January 20, 2001, Oakland, CA

Designer: Clarence Lee, Honolulu, HI

Engraver: N/A

Illustrator: Clarence Lee, Honolulu, HI

Art Director: Terry McCaffrey, USPS

Typographer: Clarence Lee, Honolulu, HI

Modeler: Joseph Sheeran

Manufacturing Process: Offset/Microprint "USPS"

Printer: Sterling Sommer

Printed at: Tonawanda, NY

Press Type: Akiyama, 628

Stamps per Coil/Pane: 20

Print Quantity: 55 million stamps

Paper Type: Prephosphored, Type II

Gum Type: Water-activated

Processed at: Ashton Potter (USA) Ltd.

Colors: Black, Cyan, Yellow, Magenta, PMS-241 (Red)

Stamp Orientation: Horizontal

Image Area (w x h): 1.41 x 0.84 in. / 35.814 x 21.336 mm

Overall Size (w x h): 0.99 x 1.56 in. / 25.171 x 39.624 mm

Full Pane Size (w x h): 7.24 x 5.94 in. / 183.896 x 150.876 mm

Plate Size: 180 stamps per revolution

Plate Numbers: "P" followed by five (5) single digits

Marginal Markings: (c) 2000 USPS - Price - Plate Numbers - Plate Position Diagram - Barcode

The Papeete - San Francisco Trading Schooner Link

Information from the Philatelic Center of French Polynesia (www.tahiti-postoffice.com)

The World Philatelic Exhibit in San Francisco from May 29 to June 8 (1997) gives us an excellent occasion to recall the maritime mail and trade links that existed 100 years ago between Tahiti and Her Islands and the famous California port.

The «tropic Bird»

From the Feb. 12, 1897 edition of the «Messager de Tahiti» (a local publication of the epoch):

...«The American sailboat «Tropic Bird», which carries mail and passengers, will leave for San Francisco on Monday, Feb. 15. Mail sacks will be closed the same day at 10 o'clock in the morning» ...

This large three masted, 368-ton trading schooner operated a regularly service between San Francisco and Tahiti via Taiohae in the Marquesas Islands dating back to 1893. The voyage lasted 28-34 days and involved a 10-day stopover at each port of call.

Although less regularly, there were four other American ships that made similar trips during the year 1897: the «City of Papeete», the «Norma», the «Falcon» and the «Galilée». They all left San Francisco loaded with variety of products and returned from Tahiti loaded with such Polynesian goods as fruit, coconuts, mother-of-pearl shells and vanilla.

The "Papeete/Zélée»

The trading schooner «Papeete» left the Mathew Turner Shipyard in San Francisco in 1892. This 122-ton vessel with some 600 sq.



The set of two stamps (above) and souvenir sheet (front cover) were issued on May 29, 1997. The *Tropical Bird* is on the left and the *Zelee* is on the right.

meters (6,459 sq. ft) of sails was commissioned for the French Navy based at Papeete.

The navy used this ship in connection with its many functions stemming from the French presence in French Oceania. The «Papeete» became a civilian vessel in 1901 and was used by successive local ship owners for transporting goods between the islands.

The ship rejoined the French Navy in 1931, but was renamed the «Zélée» in honor of a gunboat with the same name that successfully blocked access to Tahiti during World War I by three German cruisers. The «Zélée» was taken out of active service and scraped on Sept. 5, 1940, concluding 48 years of traveling throughout French Oceania. During that time, the ship participated in the exciting maritime adventure of French Oceania, first under the name «Papeete» and then under the name «Zélée».

The colorful history of this ship may be found in a small work written by Louis Le Caill.



Winick Snippets

By Les Winick (As syndicated in 435 non-philatelic newspapers)

Reprinted from the American Philatelic Society's CAC website

www.stamps.org/cac

A Japanese artist has developed the specialty of mailing unwrapped objects into an area of collecting that he calls "mail art."

Professor Shozo Shimanmoto of Kyoto Education University has gathered more than 20,000 pieces of mail from more than 55 countries. Each item is unique. Each piece was mailed unwrapped with stamps affixed directly on the item, and then sent through the individual country's mail system.

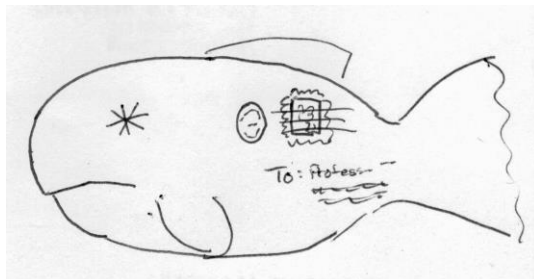
It all started four years ago when an artist friend in the U.S. sent a piece of Styrofoam to Shimanmoto with the stamps pasted on the foam along with the name and address. The Japanese educator was so intrigued with his "mail:" that he asked friends all over the world to send him samples of items from their country.

Among the items in his collection are a plastic diaper cover with the message, "I'm struggling to nurse my child." A twenty foot long section of garden hose, with one cent stamps pasted the full length of the hose; and a dried octopus with 180 yen stamps pasted on its head.

In a interview in the Japan Times, Shimamoto said he believes that "Art is primarily the means to take others by surprise. "He feels that while artists can not make any money from this form of art, it will satisfy their imagination and creativity."

Many foreign post offices will accept items for mailing that are irregular in shape as long as the item mailed does not break or damage other mail while handling.

The U.S. Post Office does not have any firm regulations on unwrapped parcels. While they do accept hotel room keys, magazines and newspapers that are not in envelopes, the manual is vague on other objects. Check with your local postmaster before sending that objet d'art to a friend.



A yachtsman recently visited the Tuvalu Islands in the South Pacific. The manager of the stamp bureau on the island reported that the boat owner did not have a map of the islands, but was able

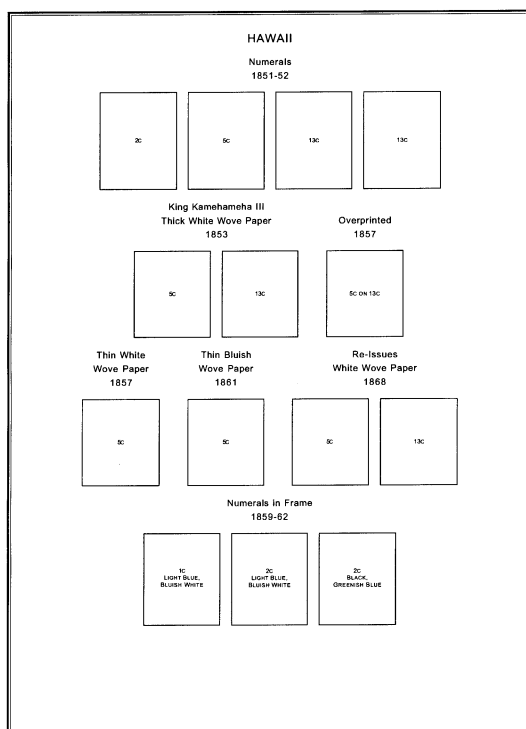
Stamp Albums Web

Information from Stamp Albums website www.stampalbums.com

Free album pages? Well, not quite. But for a small yearly fee, you'll have access to over 22,000 U.S. and foreign pages with more being added all the time.

The website, www.stampalbums.com, is authored by William E. Steiner (Bill) with help from Morty (the Computer). Bill's plan is to create pages for all postage stamps issued or die trying.

What are the pages like? The Stamp Albums website provides album pages that you can download and print off on your own printer. Pages should be printable on letter sized paper with virtually all laser or ink-jet printers. Below is a sample page to give an idea of how the pages are formatted:



Currently, he has pages for over 350 countries including Hawaii as well as other U. S. Possessions. After submitting the registration

fee, you'll be able to enter the download section of the website. The pages are saved as Adobe Acrobat files which there is a free file reader available.

Don't want to download? All pages are also available on CD-ROM that are updated monthly. The CD's were created on and for a PC; however, one user reported that they also work with Macintosh computers. CDs can be ordered online or by mail.

For further information, Bill can be contacted by e-mail at wsteiner@stampablums.com or by "snail mail" at William E. Steiner, 5254 Faye Court, Carmel, IN 46033.






BUY - SELL - TRADE - FREE APPRAISAL
WORLDWIDE STAMPS, COINS, POSTCARDS, CURRENCY,
PHONECARDS, HAWAIIANA, PAPER EPHEMERA,
AUTOGRAPHS, PHILATELIC & NUMISMATIC SUPPLIES.

FIRST SUNDAY HAWAII STAMP,
COIN & POSTCARD SHOW
SUNDAY 10am to 4pm
EVERY FIRST SUNDAY OF THE MONTH
NEXT SHOWS: MAR 4, APR 1, MAY 6

QUEEN'S ROOM
QUEEN KAPIOLANI HOTEL
150 Kapahulu Avenue, Waikiki
FREE ADMISSION & FREE PARKING

Free parking available on Kapahulu Avenue (No meters on Sundays) plus Monsarrat and Kalakaua Avenues in the Kapiolani Park area across the street. Alternatively, you may park in the hotel garage. \$1 with validation. No time limit.

To get on the mailing list for the show, and be eligible for a total of **\$50 IN DOOR PRIZES** at each show, please send your name and address to:
 P.O. Box 8391, Honolulu, Hawaii 96830-0391

Contact **PAUL EDNEY**. E-mail: enelani@hawaii.rr.com
(808) 924-9069 FAX (808) 922-2343 (24 hrs.)
DEALER BOOTH SPACE AVAILABLE

Potpouri



In the past several months, a new research tool has become available to collectors of Hawaiian stamps and postal history. It is a website called "Post Office In Paradise" and is located at www.hawaiianstamps.com.

The intended purpose of the site is to encourage participants to share what they can to expand and improve the fund of available data. The host of the website is a long time member of the HPS with established credentials for expertise on the subject. To promote a collaborative research effort, he hosts the site under the pseudonym of **Scott 31**.

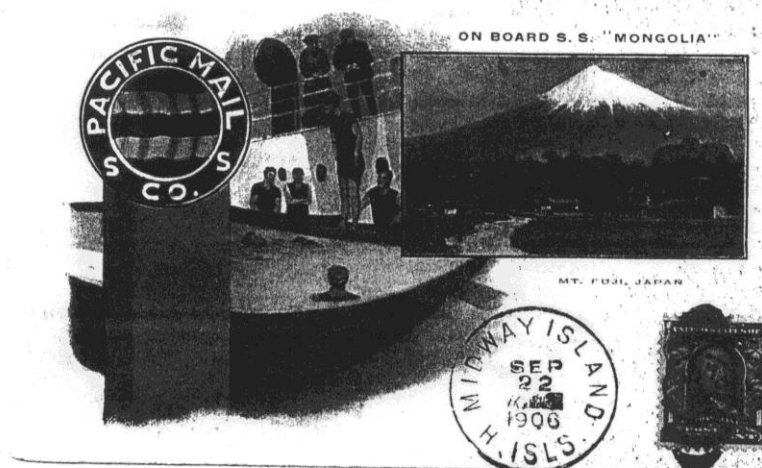
The site has won one of the top four prizes in the recently concluded Philatelic Website

competition held by the Federation International Philatelie (FIP) and is the only single country research site to place in the top group. Please ehlp with the project by visiting the site, signing the Guestbook and sharing your knowledge of Hawaiian stamps and postal history.

Scott 31 reports that updates were entered for most of the town postmark pages as well as other pages. In the Town Postmarks section, new images, postmarks, date and color information has been added.

Work is currently being done on the Cancels section. Thanks to those who have contributed information to add to the postmark census and who have sent needed images and information about unlisted postmarks and cancels.

Planned and nearly complete is a page on Boston Engraved forgeries. The site intends to cover forgeries of the Boston Lithograph Issue, Bank Note Issue and overprints.



HPS member Steve Sims provided the above image of the steam ship cover with a barred cancel from the Midway Islands dated September 22, 1906. This type of cancel was used between 1904 to 1913.

H & P SALES

P.O. Box 10020
Honolulu, Hawaii 96816-0020
Phone Dick or Kay at (808) 955-4004

We Buy and Sell Quality Hawaiian Material

including:
Stamps, Coins, Postal Stationery
Covers and Postal History,
Documents,
Postcards and Photographs.

Estate Appraisals U.S., Hawaii, Worldwide

Contact us to discuss your material
or collecting interests.

A Collection of Island Memories

The history of Hawaii has been
preserved on stamps and
coins over the years, and
there's no better place to
start your collection

of these com-
memoratives
than Ala
Moana Stamp
& Coin Co.



- Gold & Silver Eagles • U.S. Coins •
- Proof Sets • Mint Sets • Birthyear Sets •
- Hawaiian Coins • Hawaiian Medals/Tokens •
- Money Clips • Hawaiian Stamps •
- Personality Bills • Misc. U.S. & Foreign
- Gold Coins • Bullion Gold Coins • Bullion
- Silver Coins • U.S. Large and Small Size
- Currency • Gold and Silver Coin Jewelry
- Coin and Stamp Supplies • U.S. and
- Foreign Stamps

Ala Moana Stamp & Coin Co., Inc.

ALA MOANA CENTER

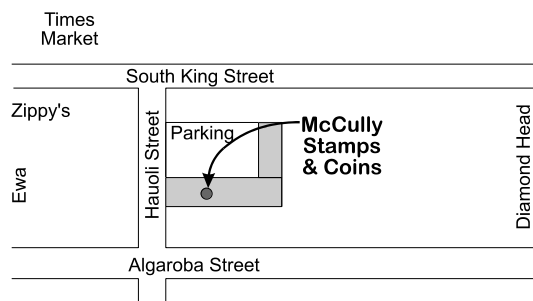
Honolulu, Hi 96814-4602 Phone (808) 947-3711

McCully Stamp and Coin

939 HAUOLI STREET, SUITE 2
HONOLULU, HAWAII 96826-2655
Phone: (808) 949-8150
Open Mon. - Sat. 9:30AM to 5:30PM

We buy and sell Stamps, Coins,
Postcards, and many other collectibles.

The largest weekly bidboard in Hawaii.
Almost 2000 items each week. You will
find much material of interest to you.



the I.D.C.

AN INFORMATIVE & DESCRIPTIVE CATALOGUE OF

HAWAII

STAMPS & RELATED ISSUES

THE MOST UP-TO-DATE, INFORMATIVE, AND DESCRIPTIVE CATALOGUE
OF HAWAII STAMPS AND RELATED ISSUES

FEATURES:

- ⊗ THE LATEST INFORMATION AND DISCOVERIES
- ⊗ A COMPILING OLD AND NEW INFORMATION FOR EASIER REFERENCE
- ⊗ PRESENTATION IN A CHRONOLOGICAL ORDER
- ⊗ ALPHABETICAL AND NUMERICAL DESIGNATION FOR EASY IDENTIFICATION
- ⊗ A LISTING OF ALL KNOWN VARIETIES
- ⊗ FULLY ILLUSTRATED
- ⊗ A "MUST" FOR EVERY HAWAII ISSUES COLLECTOR

AVAILABLE IN TWO VERSIONS:

- + A NEWLY REVISED I.D.C. CATALOGUE with 122 Black & White Pages
in a 3 Ring Binder -- \$39.00 Postpaid in the U.S.A.
- + A NEW 125 Page COLORED I.D.C. CATALOGUE in a 3 Ring Binder
with 51 colored pages -- \$75.00 Postpaid in the U.S.A.

Also available: A NEWLY UP-GRADED "VALUE LIST" -- \$10.00 Postpaid in the U.S.A.

Remit Check or Money Order to:

JOE D'ASSIS
606 ELSIE AVE.
SAN LEANDRO, CA 94577-5212

Hawai'i Post Release First Issue For 2001

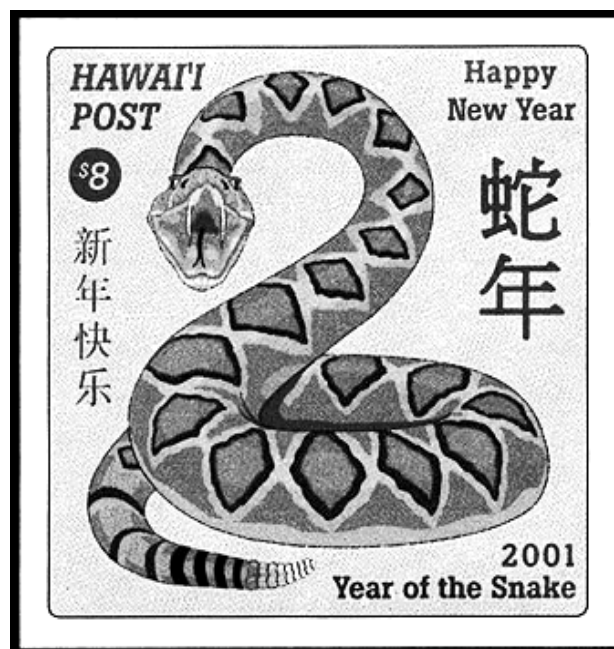
Information and images from Hawai'i Post website at www.hawaii-post.com

A stamp and a mini-sheet were issued on January 24th 2001, the first day of the Chinese New Year - the Year of the Snake. The snake is the sixth animal sign in the Chinese Zodiac. Honolulu has a large Chinatown and there is a substantial percentage of the population in Hawai'i who are of Chinese descent. People born in the Year of the Snake are supposed to be deep thinkers and make good teachers or attorneys. Part of the Chinese New Year celebrations is giving children money in small red envelopes. The First Day Covers for this issue are bright red with a cachet in metallic gold ink.

The \$5 stamp prepays the Overnight rate. It shows a snake and "Year of the Snake" in Chinese. The illustration does not properly show the spot color of the text which is in metallic magenta ink.

The \$8 Mini-sheet prepays the Same Day rate. The Mini-sheet also shows a snake. "Happy New Year" (left) and "Year of the Snake" (right) are shown in Chinese. The illustration does not properly show the spot color of the text which is in metallic cyan ink.

A booklet was also issued. This consists of the \$5 stamps in a block of 4 with a white margin all around. "Hawai'i Post" is printed on the top margin. "© 2001 Hawai'i Post" is printed vertically on the lower right side margin & *Hawai'i Security Printers, Honolulu, Hawai'i.* is printed on the bottom margin of each pane. The cover is red with text in metallic gold ink. The back cover explains Hawai'i Post's postage rates. The booklet pane is attached to the inside of the booklet using a small strip of gum on the left margin of the booklet pane.



Other planned issues for 2001:

March 11 - Centenary of the opening of the Moana Hotel and the birth of Tourism in Waikiki.

April 21 - 75th Birthday of Her Majesty Queen Elizabeth II of England. The Hawaiian Monarchy had strong ties with Queen Victoria of England (Queen Elizabeth II's Great Great Grandmother). The current Hawai'i state flag includes the "Union Jack" of Great Britain in the top left corner.

October 1 - 150th Anniversary of the First Hawaiian Postage Stamps - the "Missionaries". The stamps were first put on sale at Honolulu, O'ahu and Lahaina, Maui Post Offices on October 1st, 1851.

December 7 - 60th Anniversary of the Japanese attack on Pearl Harbor and the entry of the U.S. into WWII.

Technical Details

Colors: \$5 - Forest green, grey-green, maroon, royal blue and black
 \$8 - Royal blue, maroon and black
 Size: \$5 - 32mm X 48 mm
 \$8 - 84mm X 70 mm
 Stamp Sheet Size: 30 (6 across, 5 down)
 Perforation: 12. The mini-sheet is imperforate
 Design, Layout & Prepress: Enelani
 Printer: Hawai'i Security Printers, Honolulu, HI
 Printing Method: 4-color (Cyan, Magenta, Yellow, and Black)
 Sheet Margin Markings: HAWAII POST (top Middle), "Traffic Light" showing 4 colors used in printing (lower right side), © 2000 Hawai'i Post (lower left side), & Hawai'i Security Printers, Honolulu, Hawai'i. (bottom middle)
 Paper: GPA coated white stock with water-activated gum on back.

HAWAII'S HISTORY COMES ALIVE AT

Hawaiian Islands Stamp & Coin



Pre-Cook Hawaiian artifacts.



Hawaiian coins, tokens, medals.



Old Hawaiian Documents.



Hawaiian Monarchy items.



Hawaiian stamps & letters.



Hawaiian prints & paintings.



Hawaiian books & periodicals.

AND MUCH, MUCH MORE!

Feel free to stop in and browse through our extensive inventory. Our stock includes many rare and unique items as well as material for the general collector. We welcome the opportunity to assist you with your needs in coins, currency, stamps and Hawaiiana.



Don Medcalf, President
 ANA, HSCDA

Hawaiian Islands Stamp and Coin
 1111 Bishop Street • Honolulu, HI 96813
 (808) 531-6251

Corner Bishop & Hotel • Mon-Fri 9-5, Sat 10-4

FAR FETCHED METEOROLOGY IN HAWAII

STAMP

SIGNATURE

BRRRR...

SEE THE OCEAN SO BLUE,
THE OUTRIGGER CANOE,
AND THE TRADEWINDS
CARESSING THE TREES?

We see something of each
at the WAIKIKI BEACH,
and a lifetime of
pleasurable ease.

... life of
pleasurable ease ...



12 MAR 1984

It is Jingle-all-the-way
in this One-Horse
Open Sleigh,
on Hawaiian
Christmas Day ---
IF the weather
disobey.



23 OCT 1974

30

But if thermometer went "PLOP"
for a forty-point drop,
say from seventy ...
down to thirty degrees;
we would easily think
that we'd be on the brink
of a miserable
winter-time freeze.

This just won't happen here,
we have nothing to fear,
climate truth simply
cannot be stretched.
We have faith in the fact
about weather abstract:
that a WAIKIKI freeze
is far fetched.

PETER W. BURK, Jr.

11th annual
Hawaii
Collectors' Expo
February 23, 24, 25, 2001

*Art, Antiques and Collectible
Marketplace*

Blaisdell
Exhibition Hall
**Honolulu,
Hawaii**



Friday 4-9pm, Saturday 11am-9pm, Sunday 11am-5pm.
\$3 daily admission, \$1.00 off with this ad.
For additional information call (808) 486-4766



HAWAIIAN PHILATELIC SOCIETY

P.O. BOX 10115
HONOLULU, HAWAII 96816-0115

ADDRESS SERVICE REQUESTED

