

**84TH ANNUAL CONVENTION
AMERICAN PHILATELIC SOCIETY**



The Chamberlain of the Household
is commanded by
His Majesty
to invite All Citizens to a Philatelic Exhibition
at the Ilikai Hotel on
Thursday the fifth at 10:00 o'clock

DRESS INFORMAL

HAPEX-APS 70

Honolulu, Hawaii, November 5-8, 1970

Pacific Ballroom of the Ilikai Hotel on the Beach at Waikiki.



TRAVEL CONSULTANTS INC.
and
TRADE WIND TOURS

WELCOMES

AMERICAN PHILATELIC SOCIETY

visit our INFORMATION — TOUR AND TRAVEL DESK — ILIKAI HOTEL



ALOHA



The President and Members of the Hawaiian Philatelic Society welcome you to HAPEX-APS 70, the 84th Annual Convention of the American Philatelic Society. Some of the finest philatelic material in USA is on display, including many rare and unique items which have never been shown publicly before. The large Hawaiian section covers a span of 80 years, and embraces every aspect of postal history from the arrival of the first company of missionaries to annexation by USA.

Staging Hawaii's first national philatelic exhibition has been an enormous undertaking for a small club. It could not have become a reality without the help, advice and co-operation of the American Philatelic Society, the U.S. Post Office, the philatelic press, the Bureau of Engraving and Printing, the United Nations Postal Administration, Pacific area postal agencies, the Honolulu Academy of Arts, the Hawaiian Mission Houses Museum, and philatelic collectors and dealers everywhere.

Mahalo,

Elizabeth Ashworth

Elizabeth Ashworth,
General Chairman

FRIENDS OF HAPEX

PATRONS:

Mrs. Charles H. Chiswick (Lei) Honolulu, Hawaii
Robert E. Van Dyke Honolulu, Hawaii

SUBSCRIBERS:

Edward J. Burns, Honolulu, Hawaii
Winfield C. Clatterbuck Youngstown, Ohio

CONTRIBUTORS:

Mrs. Ruby H. Brown Kailua, Hawaii
John W. Burkholder Pearl City, Hawaii
Dr. Austin W. Cheever Honolulu, Hawaii
Donald L. Collins Chicago, Illinois
LTC Shirley R. Heinze Washington, D.C.

The Hapex-APS 70 Committee would like to thank all these members and friends who have made generous financial contributions.



MISSION HOUSES MUSEUM

Missionary Influence on Hawaiian Postal History

Before the Hawaiian Postal System had been established, some of the missionaries solved their postal problems in rather unique fashions. From the Levi Chamberlain Journal under November 2, 1834 this entry is found:

... [Armstrong] states that something like a mail has been started between the three stations [on Maui] a stout native man has been hired for a fathom of cloth a trip to travel the distance and carry dispatches."

After the official establishment of the Postal System by the DECREE OF THE PRIVY COUNCIL, December 20, 1850, and its re-enactment by the Legislature on June 18, 1851, many of the missionaries at outer stations became postmasters for their areas. None were paid, but as Lorenzo Lyons, postmaster at Waimea, Hawaii stated:

"As the local post masters have no pay but the franking privilege, I endeavor to write as many letters as possible to get something by way of compensation."

Two missionary descendants, Henry M. Whitney, son of Samuel and Mercy Whitney of the Pioneer Company, and Alvah Kittredge Clark, were the first two Postmaster Generals in Hawaii.

Included in the exhibit will be articles from the various periods in Hawaiian Postal History. These will include examples of "Ship Letters", early Honolulu postmarks, the Post Office Account Book from Waimea, as well as other interesting articles. All of the items displayed are from the collection at the Mission Houses Museum.

Emily L. Spargo
Curatorial Assistant
Mission Houses Museum

ask the man
who knows
COVERS



THE WASHINGTON PRESS, publishers, MAPLEWOOD, NEW JERSEY 07040

THE QUEEN AND THE SCHOOLGIRL

MEMORIES OF WASHINGTON PLACE

By Elizabeth Ashworth



Queen Liliuokalani



Lei Chiswick

Lei Chiswick, The Hawaiian Philatelic Society's long term hostess, began her association with Hawaii's royal family when King Kalakaua visited San Francisco shortly before his death in 1891. Lei's father was employed as a landscape architect on Judge Hart's estate (now part of the campus of the University of California at Berkeley), and the Thevenin family lived in a cottage on the grounds.

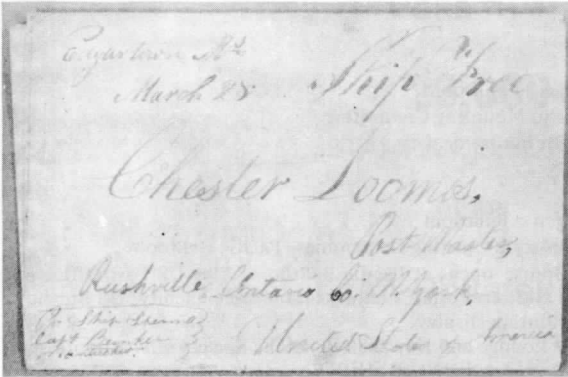
In the early hours of June 13, 1890, Mrs. Hart, the judge's Hawaiian wife helped to deliver the baby girl she lovingly called Leilani. A few months later King Kalakaua visited the Hart mansion. Mrs. Hart told him of the child she had grown to love as her own, and the king asked to see her. Lei was a happy baby, and gurgled with delight when the Merry Monarch took her in his arms, an action that was to change the course of her life.

In 1903 the Thevenin family came to Hawaii to live on the island of Kauai. Lei was enrolled at the Priory School adjoining Washington Place, which was the home of the deposed Queen Liliuokalani, sister of Kalakaua. Through a friend the queen learned that the child Leilani was boarding at the school. A meeting was arranged, and a firm and lasting friendship resulted.

Lei was unhappy at school as she missed the warmth of family life. She used to steal away at every opportunity to visit her friend next door, and would sit for hours at the side of the queen's big armchair. They talked of family and school and people and life, and all the interesting, incidental, important, trivial events that make up the daily life of any child.

When Lei left the Priory School their paths seldom crossed but she never forgot her friend, Queen Liliuokalani. The queen died in 1917, and Washington Place later became the residence of the governors of Hawaii. It still retains its Victorian charm, and spacious tropical setting despite the constant drone of Beretania Street traffic which passes the door. The schoolgirl is now a woman of 80 with a lifetime of memories behind her. For a few short hours she will share memories of her childhood with visitors who attend the Tea at Washington Place.

MISSIONARY LETTER FROM HAWAII



Robert E. Van Dkye Collection

One of the earliest known letters from Hawaii in philatelic hands dated OAHU (WAAHOO) SAND. 1. OCT. 8, 1822, from printer Elisha Loomis, member of first company of missionaries, arriving on the "Thaddeus" in 1820. The Captain carried the mail free to the port of arrival at Edgartown, Mass., arriving March 28 (1823), a fast voyage around the Horn for the period. Forwarded without charge to Rushville, New York as the recipient was the local postmaster.



See Us At Booth 4

WE FEATURE

United States • United Nations
Hawaii • South Pacific
British Colonies • Japan
General Foreign
Sets • Packets • Covers

STAMPS & COLLECTIONS BOUGHT AND SOLD

Bear Stamps

Box 8741 Honolulu, Hawaii 96815
Phone 923-6067

APS 49615 ATA 18542

SCHEDULE OF EVENTS—HAPEX-APS 70

Ilikai Hotel, on the beach at Waikiki

WEDNESDAY, NOVEMBER 4

- 2:00 p.m.—8:00 p.m. Registration, Pacific Ballroom
- 2:00 p.m.—8:00 p.m. Deliver exhibits to Mounting Committee
- 8:00 p.m. Check in time for bourse dealers

THURSDAY, NOVEMBER 5.

- 8:00 a.m.—10:00 p.m. Registration, Pacific Ballroom
- 10:00 a.m. Special Hawaiian-style Opening Ceremonies—Pacific Ballroom
- 10:15 a.m. Exhibition & Bourse opens at Pacific Ballroom. Also US Post Office Sub Station, United Nations Postal Administration Sales Facility, US Bureau of Engraving and Printing Display.
APS Hospitality Lounge and Hawaiian Philatelic Society service booth open.
Unveiling of MOON LANDING EXHIBIT
- 6:00 p.m. Hospitality party for APS members, families and guests—Canoe House
- 10:00 p.m. Exhibition and Bourse close.

FRIDAY, NOVEMBER 6

- 9:00 a.m. Registration—Pacific Ballroom
- 10:00 a.m. Exhibition, bourse and postal facilities open—Pacific Ballroom
- 12:00 noon Ladies Fashion Show, Rainbow Tower, Hawaiian Village Hotel
- 2:00 p.m. First APS Business Session. President Daniel W. Vooyo, presiding—Melbourne Room
- 3:00 p.m. Tea at Washington Place (Home of Hawaii's Governor), located in Downtown Honolulu
(Ticket includes bus transport to and from Ilikai Hotel)
- 7:00 p.m. Auction conducted by Robert A. Siegel—Bora Bora Room
- 10:00 p.m. Exhibition and bourse close.

SATURDAY, NOVEMBER 7

- 9:00 a.m.—8:00 p.m. Registration, Pacific Ballroom
- 10:00 a.m. Exhibition, bourse and postal facilities open—Pacific Ballroom
- 10:00 a.m. Island Safari. (A private motorcade of cars on a circle island tour. Dutch treat lunch at Punahoa Beachside Restaurant. Coffee at a private home)
Mainland visitors meet outside hotel's main entrance and wear registration badge. Strictly first come, first served.
- 10:00 a.m. Second APS Business Session—Melbourne Room
- 1:00 p.m. Jack Knight Collectors' Club Federation meeting—Kauai Room.
- 3:00 p.m. Ryukyu Philatelic Specialists Society meeting—Kauai Room
- 7:00 p.m. Cocktail hour (no host) — Australia Room
- 8:00 p.m. Awards Banquet—Bora Bora Room
- 8:00 p.m. Exhibition and bourse close

SUNDAY, NOVEMBER 8

- 9:00 a.m. APS Writers Unit Breakfast and Meeting—Waikiki Suite
- 10:00 p.m. Exhibition, Bourse and postal facilities open—Pacific Ballroom
- 5:00 p.m. CLOSE OF APS CONVENTION AND HAPEX-APS 70
- 6:00 p.m. Hawaiian Luau at Hawaiian Village Hotel.

NOTE: Tickets for social functions may be purchased at the Registration desk.

A representative of Trade Wind Tours will be stationed at the entrance to the Pacific Ballroom from 2:00 p.m. Wednesday through the close of the convention. It is an easy matter for individuals or parties to arrange tours, either local or inter-island at a moment's notice.

An Aloha Room (Hilo Suite) is available for Mainland ladies to rest and get acquainted.

MORE THAN

23,000

STAMP COLLECTORS

of the

American Philatelic Society

invite you to

- Join the oldest and largest philatelic organization in the world.
- Read the finest monthly stamp journal in the field, a scholarly publication which is a regular part of many permanent libraries.
- Use our Sales Division which sells over \$400,000 of members' stamps each year.
- Have your name and collecting interests listed in our biennial 400-page Membership Directory.
- Obtain philatelic handbooks published by the Society...take part in our annual conventions and exhibitions.
- Affiliate with one or more of our 460 local chapters...form new and lasting friendships.
- Take advantage of the Expertization Service which identifies and authenticates stamps for you.

MAY WE INVITE YOU TO JOIN TODAY? WE HOPE SO, AND SO DO
MORE THAN 23,000 OTHER MEMBERS.



For additional information and application form, write to:

EXECUTIVE SECRETARY

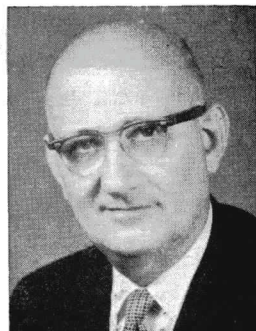
American Philatelic Society

P.O. Box 800, State College, Pa. 16801

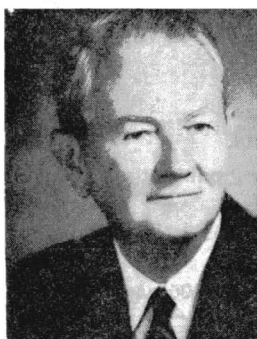


President
Daniel W. Vooy
Canajoharie, N. Y.

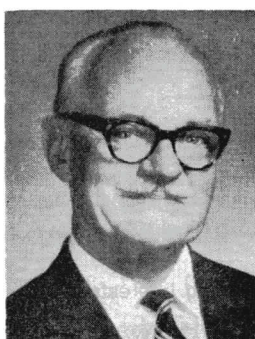
1970
OFFICIAL FAMILY
of the
AMERICAN
PHILATELIC
SOCIETY



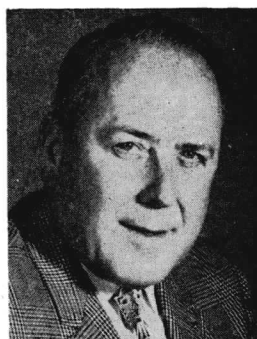
Executive Secretary
Col. James T. DeVoss
State College, Pa.



Vice President
Grant Bulkley
Phoenix, Arizona



Vice President
Dr. William C. Parker
Phoenix, Arizona



Vice President
Robert D. Corless
Phoenix, Arizona



Secretary
Nicholas G. Koutroulis
New Orleans, La.



Treasurer
Mrs. Lois M. Evans
Brookline, Mass.



Editor
James M. Chemi
Phoenix, Arizona

Director-at-Large
George A. Blizil
Hollywood, Fla.

Director-at-Large
Kenneth R. de Lisle
Albany, N. Y.

Director-at-Large
John E. Foxworth, Jr.
Charlotte, N. C.

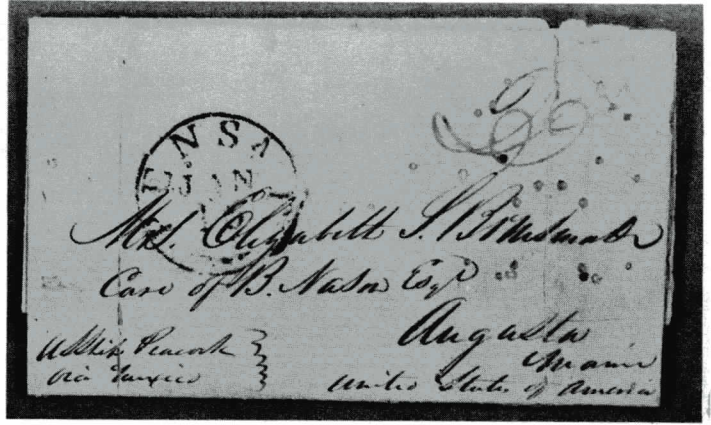
Past President
Edward L. Willard
State College, Pa.

Director of International Affairs
George T. Turner
Washington, D. C.

Attorney
George M. Martin
Yakima, Wash.

HONOLULU VIA MEXICO
TO THE U.S.

Robert E. Van Dyke
Collection

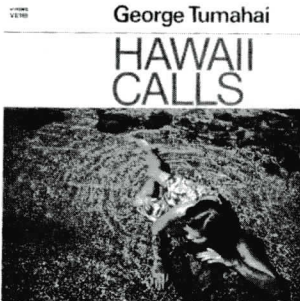


This cover was mailed from Honolulu, S.I. October 8, 1836, via the U.S. Ship Peacock, via Mexico. It was illustrated by Westerberg in the Collectors Club Philatelist January 1955 as the earliest "Via Mexico" letter from Hawaii in philatelic hands. It paid the 2 reales rate and was forwarded by way of Pensacola, Florida, arriving in Maine February 3, 1837.

RECORDS HAWAII

THE LARGEST SELECTION OF
RECORDS AND TAPES IN
THE STATE OF HAWAII

POLYNESIAN MUSIC



GREAT CLASSICS

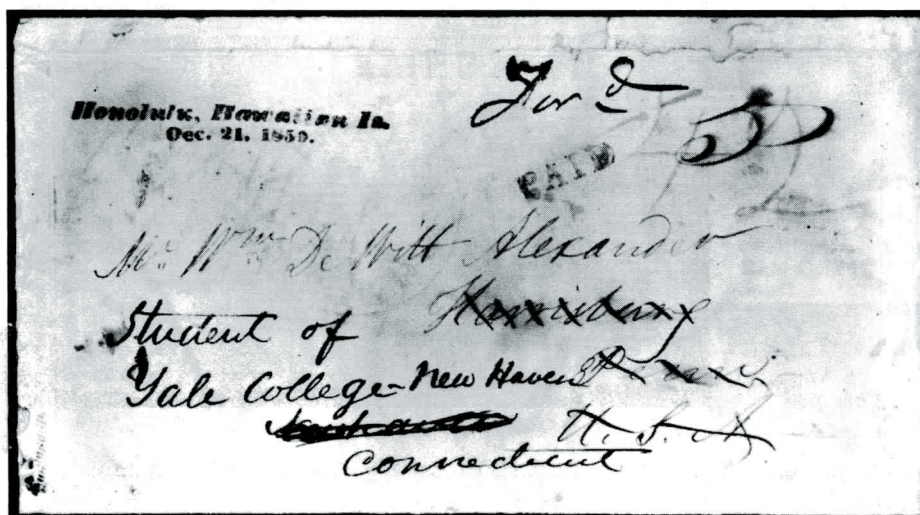


3 STORES TO SERVE YOU...

- 1257—KAPIOLANI BLVD.
- 1280—KAPIOLANI BLVD. (TAPE DIV.)
- 314—BEACHWALK "in WAIKIKI"

"TRY OUR SPECIAL ORDER SERVICE, WE PACK
AND MAIL, ANYWHERE... ALOHA!"

AN EXTRAORDINARY
HAWAII POSTAL HISTORY ITEM



Edward J. Burns Collection

1850 First Day Cover with Hawaii's first postmark.

The cover shown above is the only one recorded to date that was postmarked on the day the Honolulu post office was established.

A decree promulgated by Kamehameha III and the Hawaiian Privy Council on December 20th, 1850 established a post office in Honolulu, appointed Henry M. Whitney as postmaster, and authorized him to charge specified rates of postage.

The decree was published in the kingdom's newspaper "The Polynesian" the next day, December 21st, 1850. It provided for an effective date "from the date of publication hereof", i.e., December 21st, 1850, the date this cover is postmarked.

The cancellation by the black straight line "Honolulu, Hawaiian Is." with movable date on the second line is Hawaii's first postmark. Known to have been used between November, 1850 and June of 1851, only 11 covers with the marking have been recorded to date by collectors.

The red crayon manuscript "42¢" on the cover indicates the 40¢ rate for letters from the Pacific Coast to eastern states and the 2¢ ship captain's fee, which are noted as "Paid" in a blue strike. The "Ford 5¢" in manuscript shows the forwarding charge from Harrisburg, Pa. to New Haven, Conn.

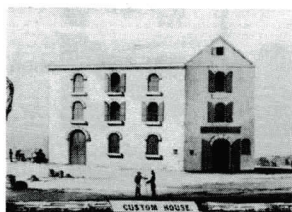
The orange red San Francisco marking (MH 413.39) is a receiving mark denoting post office receipt for forwarding on Jan. 28th, 1851.



Robert E. Van Dyke
Collection

U.S. CONSULATE

On April 13, 1838 Peter A. Brinsmade was appointed U.S. Consul for Hawaii. It was here that all incoming mail to Hawaii was brought unless it was specifically designated as being addressed to a member of the Mission Headquarters or as being in care of a Ship Chandler or Forwarding Agent. Brinsmade built this building which was used by consular agents for many years.



Robert E. Van Dyke
Collection

CUSTOM HOUSE

At the time of its destruction in July 1904, the Custom House was the oldest existing government building in Honolulu still in use. It was built about 1842-43 with William Paty as its first collector, followed in 1850 by Charles R. Bishop, who used a custom payment dated stamp as Honolulu's first postmark. Mail was received here from middle of 1850 to end of 1851.

ISLAND COIN EXCHANGE Inc.

Stamps • Accessories • Coins

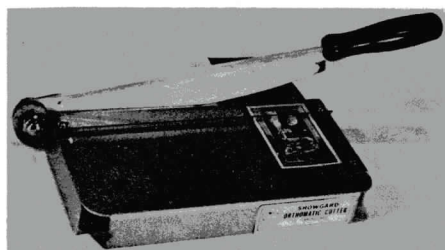
1236 Ala Moana Center

Telephone: 941-2625 Gordon Medcalf
President

SHOWGARD

ORTHOMATIC CUTTER
ITEM 603

**With Full 6"
Blade And Base**



- Creates custom mounts quickly and precisely.
- Takes Showgard Mount strips up to 6" wide (152 mm.)
- Automatic bordering setting.
- Safety finger stop.
- Millimeter alignment gauge with permanent markings.
- All steel construction prevents warpage.
- Contour ground blade.



SHOWGARD

\$7.00 ea.

(Add 50¢ for shipping)

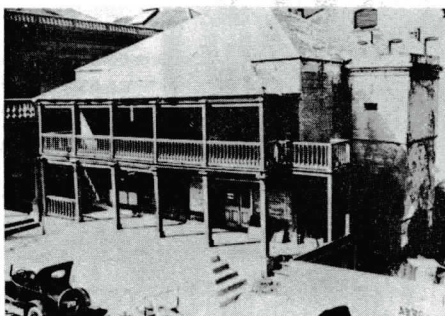
At your favorite dealer or from: Vidiforms Co., Box 4, New City, N.Y. 10956

Name _____

Address _____

City, State, Zip _____

THE HONOLULU HALE

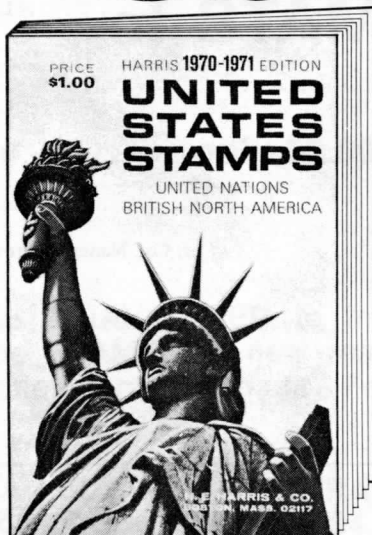


Robert E. Van Dyke Collection

Honolulu Hale was built from hand cut coral blocks about 1832 as a residence for Kamehameha III and later purchased by the government when the first Iolani Palace was built. In 1847 the Dept. of Education, Treasury, Dept. of Interior, and Dept. of Foreign Affairs had offices in the four corners of the building. When affairs of the post office reached such a volume in 1853, Henry Whitney took over the building and the Government Bureaus moved to other offices. Whitney established a book and stationery store in the building along with the post office, remaining in this building until 1869-70 when the old Polyne-sian office was torn down to the left and the new post office was finished in 1870. This building was torn down in 1917.

NEW! HARRIS US/BNA

1970-1971



CATALOG
With
thousands
of price
changes
\$1.00

- 200 PAGES, 2,000 ILLUSTRATIONS.
- DELUXE FLAT-BACK BINDING.
- HEAVY WASHABLE COVERS.
- HIGH QUALITY PAPER.
- LATEST UP-TO-THE-MINUTE REVISIONS.

One of the most important editions in our more than 37 years of publishing this most widely used catalog — a “must” for every stamp collector. Compiled and edited by the experts of H. E. Harris and Co., The World’s Largest Stamp Firm.

- All major U. S. Postage and Airmail issues . . . PLUS Special Delivery, Parcel Post, Envelope Squares, Postal Cards, Officials, Revenues, Postage Dues; also other popular specialties.
- Complete illustrated U. S. Possessions, Confederate States, United Nations and British North America.
- Big “Americana” section. Mounted collections, albums, popular supplies and accessories.
- U. S. Stamp Identifier — fully illustrated, check your own collection for valuable hidden stamp treasures!

MAIL THIS COUPON TODAY!

H. E. HARRIS & CO., Catalog Dept. Boston, Mass. 02117.

Please RUSH me, post free, the NEW 1970-1971 EDITION of your 200 page catalog, UNITED STATES STAMPS, U.S. POSSESSIONS, UNITED NATIONS & BRITISH NORTH AMERICA, including the U. S. Stamp Identifier, etc. I am enclosing \$1.00.

Name

Address

City & State Zip

**H. E. HARRIS
& CO.**

CATALOG DEPT.

BOSTON

MASS. 02117

Founded in 1916

HAPEX-APS 70 COMMITTEE

GENERAL CHAIRMAN & SECRETARY—Elizabeth Ashworth

Vice Chairman, Awards, Judging and Exhibit Layout	Lloyd H. Flickinger
Advertising, Printing and Program	Ted E. Ashworth
Awards Banquet	Otto Orenstein
Bourse	Fred L. Mandel, Jr., Walter P. Stoermer
Cachet and Hapex Sales	Ferd W. Brown, Gilbert Lewis
Exhibits:	
Entries	Elizabeth Ashworth, Lloyd H. Flickinger
Mounting	Clarence McIntosh
Literature	Lt. Col. Nancy Morrow
Finance	Clarence McIntosh
Frames	William H. Broad
Government Relations & Post Office	Edward J. Burns
Hapex Special Assistant	Lt. Col. Nancy Morrow
Ladies Committee:	
General	Lei Chiswick, Lt. Col. Nancy Morrow, Mrs. Osborn B. Morrow
Tea at Washington Place	Hazel Ashworth
Aloha Room & Motorcade	Elsa Flickinger
Publicity, Prospectus & Special Projects	Melvin H. Schoberlin
Registration	Lt. Col. Nancy Morrow, Harold N. Androus
Security	Paul A. Nelson
Social Events, Tours, Local Publicity	Elizabeth Ashworth
H.P.S. President	Edward J. Burns

Burton Doling

Fine Stamps & Coins

4343 Van Nuys Blvd.
Sherman Oaks, Calif. 91403



Specializing In

United States

& Hawaii

*Buy with Confidence
in our 32 years of
Professional Experience*

BOOTH 19



*Largest and Finest
Selection of Loose
and Mounted
Jade in Hawaii*

ANGEL SKIN CORAL

*Delicate, ethereal pink coral of finest quality in
finely wrought gold mountings . . . Exquisitely
designed rings, brooches, earrings and necklaces
to cherish now and always.*

• HAWAIIAN CHARMS

Original designs; silver and gold

Free illustrated price list on request

Designers and Manufacturing Jewelers

3 DE LUXE SHOPS IN WAIKIKI



Wichman's
AT WAIKIKI

83rd Year

2239 Kalakaua Avenue
and Royal Hawaiian

treat yourself to the next

30 BIG ISSUES

of STAMPS

only \$2.00

SPECIAL TRIAL OFFER to introduce the weekly magazine STAMPS to new readers. Open to U.S. subscriptions only. (Canada & Foreign \$2.30).

REGULAR SUBSCRIPTION RATES: One year U.S., \$3.90, (Canada and Foreign, \$4.40); Two years U.S., \$6.50; (Canada and Foreign, \$7.50).

Date _____

H.L. LINDQUIST PUBLICATIONS, INC.

153 Waverly Place, New York, N.Y. 10014

Please enter me for your trial offer—the next 30 issues of **STAMPS** at the special price of \$2.00, which I have enclosed. (Canada & Foreign \$2.30).

NAME _____

STREET _____

CITY _____ STATE _____ ZIP _____

☐ Please send me a sample copy of **STAMPS**.

BOARD OF JUDGES

MR. GEORGE M. MARTIN—Yakima, Wash. CHAIRMAN
MR. JOSEPH M. CLARY—San Francisco, Calif.
DR. GERALD B. SMITH—Woodburn, Oregon
MR. WILLIAM C. AICHELE—Hollister, Calif.
MR. HAROLD P. LOPES—Albany, Oregon
MR. GORDON W. NOWELL-EUSTICKE—Christiansted, Virgin Islands
DR. FRED C. BROCK—Burbank, Calif.

The Board of Judges has been selected by the Hapex-APS 70 Committee from the APS list of accredited judges. The Board shall have the power to withhold any award when, in its opinion, entries do not conform to acceptable national exhibition standards, and its decisions shall be final. In addition, the Board may re-classify any entry which, it believes is not entered in the proper class or section.

OPEN COMPETITION

Many exhibitors and collectors do not fully comprehend the concept of open competition. In previous local and regional exhibitions in Hawaii it was customary to award first, second and third places to entries in a particular class or section irrespective of the overall quality of the exhibits. Entries competed against each other and did not necessarily measure up to any national standards of philatelic quality. Consequently, there was no real basis for comparison when evaluating the relative merits of awards from region to region and show to show.

EACH ENTRY WILL BE JUDGED ON ITS OWN MERITS. There is no limit as to the number of awards that may be presented in any grade—Gold, Silver or Bronze. The Board of Judges is requested to present such awards to OPEN CLASS exhibits as the exhibits, in its opinion, merit. Each exhibit is to be judged against accepted standards of philatelic achievement, based principally upon consideration of the following qualifications:

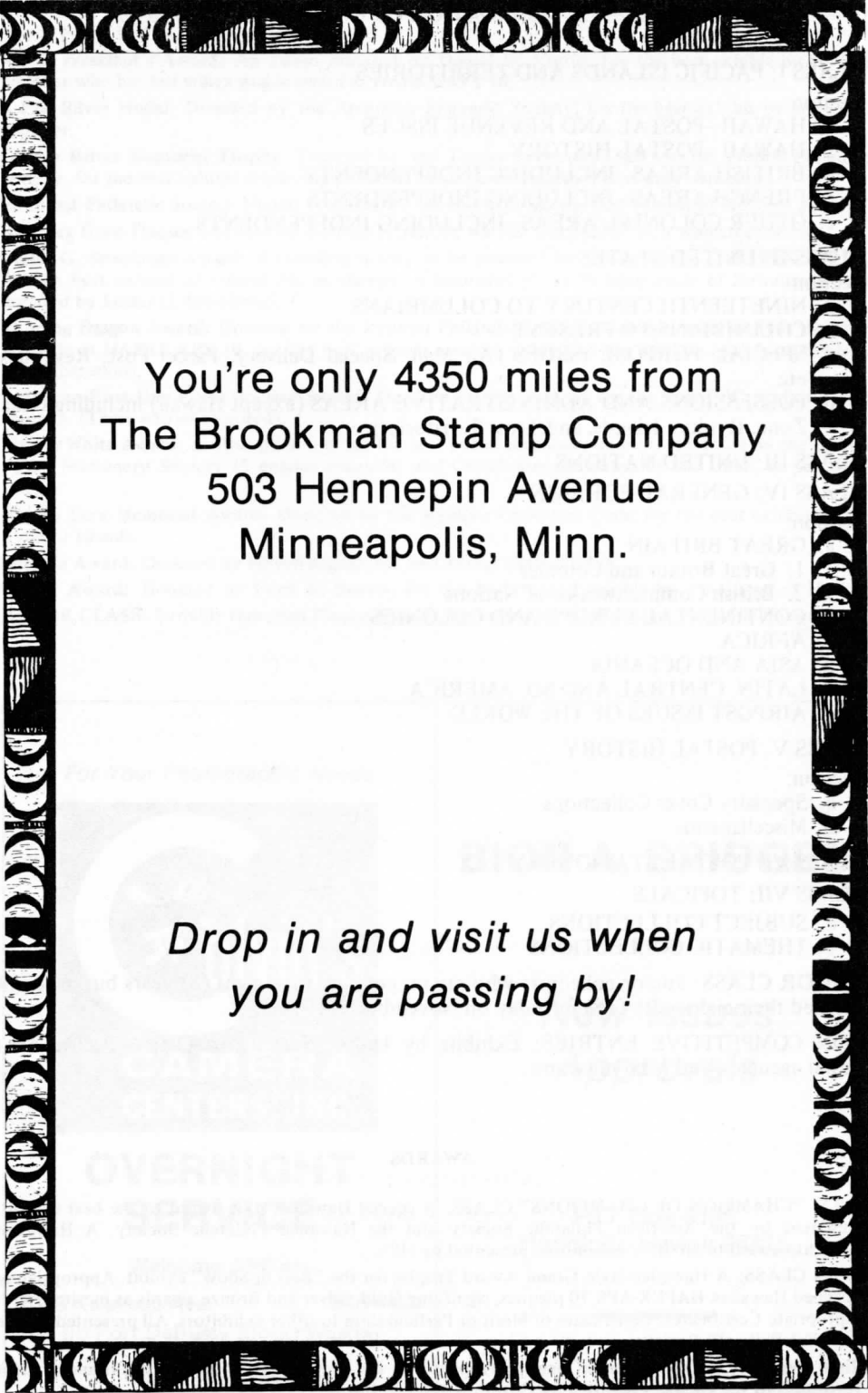
- (1) Up-to-date philatelic knowledge and any personal research.
- (2) Completeness and scope of the exhibit.
- (3) Condition.
- (4) Arrangement and neatness of presentation.

Thematic, topical, and junior exhibits will be judged under special rules.

EXHIBITION CLASSES

“CHAMPION OF CHAMPIONS” CLASS

Grand award winners in the major open national stamp shows between July 1, 1969 and June 30, 1970 are competing in this third World Series of Philately. An engraved invitation to participate was presented by the American Philatelic Society in conjunction with the host chapter, the Hawaiian Philatelic Society only upon verification that the exhibit had taken the top award in open competition.



You're only 4350 miles from
The Brookman Stamp Company
503 Hennepin Avenue
Minneapolis, Minn.

*Drop in and visit us when
you are passing by!*

OPEN CLASS: CLASSIFICATION OF COMPETITIVE ENTRIES

CLASS I: PACIFIC ISLANDS AND TERRITORIES

Section:

- a. HAWAII—POSTAL AND REVENUE ISSUES
- b. HAWAII—POSTAL HISTORY
- c. BRITISH AREAS—INCLUDING INDEPENDENTS
- d. FRENCH AREAS—INCLUDING INDEPENDENTS
- e. OTHER COLONIAL AREAS—INCLUDING INDEPENDENTS

CLASS II: UNITED STATES

Section:

- a. NINETEENTH CENTURY TO COLUMBIANS
- b. COLUMBIANS TO PRESENT
- c. SPECIAL PURPOSE ISSUES (Air Mail, Special Delivery, Parcel Post, Revenues, etc.)
- d. POSSESSIONS AND ADMINISTRATIVE AREAS (except Hawaii) including Canal Zone, Ryukyu Islands, and Trust Territories).

CLASS III: UNITED NATIONS

CLASS IV: GENERAL FOREIGN

Section:

- a. GREAT BRITAIN
 1. Great Britain and Colonies
 2. British Commonwealth of Nations
- b. CONTINENTAL EUROPE AND COLONIES
- c. AFRICA
- d. ASIA AND OCEANIA
- e. LATIN, CENTRAL AND SO. AMERICA
- f. AIRPOST ISSUES OF THE WORLD

CLASS V: POSTAL HISTORY

Section:

- a. Specialty Cover Collections
- b. Miscellaneous

CLASS VI: POSTAL STATIONERY

CLASS VII: TOPICALS

- a. SUBJECT COLLECTIONS
- b. THEMATIC COLLECTIONS

JUNIOR CLASS: Junior collectors who are no younger than eight (8) years but have not reached their eighteenth (18) birthday on November 5, 1970.

NON COMPETITIVE ENTRIES: Exhibits by United States Post Office, Pacific Area postal agencies, and local museums.

AWARDS

A.P.S. "CHAMPION OF CHAMPIONS" CLASS: A special Hawaiian-style award to the best exhibit, presented by the American Philatelic Society and the Hawaiian Philatelic Society. A Hawaiian memento award to all other exhibitors, presented by HPS.

OPEN CLASS: A Hawaiian-style Grand Award Trophy for the "Best in Show" exhibit. Appropriately designed Hawaiian **HAPEX-APS 70** plaques, signifying Gold, Silver and Bronze awards as merited, with appropriate Certificates. Certificates of Merit or Participation to other exhibitors. All presented by the Hawaiian Philatelic Society.

His Excellency, the Governor of Hawaii, Trophy: For the best exhibit of the Pacific Islands and/or Territories of the Pacific. Presented by Governor John A. Burns.

His Honor, the Mayor of Honolulu, Trophy: For the best exhibit of Hawaiian Islands. Presented by Mayor Frank F. Fasi.

A.P.S. President's Award: An award donated by Daniel W. Vooyo, for the best exhibit by an APS member who has not won a major award at HAPEX-APS 70.

A.P.S. Silver Medal: Donated by the American Philatelic Society, for the best exhibit by an A.P.S. member.

George Ritter Memorial Trophy: Donated by the Tampa Collectors Club and the Florida Philatelic Society, for the best exhibit displaying philatelic research entered by a first-time exhibitor.

Elmhurst Philatelic Society Medal: Donated by the Society, for the best exhibit of Mexican material.

Ingeborg Herst Plaque: Donated by Herman Herst, Jr., for the best exhibit by a woman exhibitor.

Lester G. Brookman Award: A traveling trophy to be awarded for the first time at HAPEX-APS 70, for the best exhibit of United States stamps. A beautiful philatelic lamp made of Hawaiian woods donated by Lester G. Brookman.

Floating Dragon Award: Donated by the Ryukyu Philatelic Specialist Society, with the first award to be made at HAPEX-APS 70, for the best original research exhibit of the Ryukyu Islands (under U.S. Administration).

American First Day Cover Society Award: Donated by the Society, for the best FDC exhibit of any country. (Three entries required).

Marcus White Award: A silver plate tray for the best postal stationery exhibit. Presented by the United Postal Stationery Society (5 entries required) and Certificates presented by the UPSS, as per UPSS rules.

Minoru Sera Memorial Award: Donated by the Ryukyu Collectors Club, for the best exhibit of the Ryukyu Islands.

Debliffa Award: Donated by Meyer Bogost, for best Junior Class exhibit.

Brown Award: Donated by Ferd W. Brown, for the best topical exhibit by a resident of Hawaii.

JUNIOR CLASS: Suitable Hawaiian Plaque Awards, Presented by the Hawaiian Philatelic Society.

For Your Photographic Needs



**OVERNIGHT
SERVICE**

Welcome APS'ers

2053 Kalakaua Ave. 946-4404
(In Fort DeRussy Block) Waikiki

BION A. BRIDGES

*New Issues
Approvals*

P.O. Box 8135
Honolulu, Hawaii 96815

COURT OF HONOR

The Frank C. Atherton Collection of Hawaii – on loan from the Honolulu Academy of Arts.

The U.S. Post Office Department Museum Exhibit of Rare Proofs, Essays and Related Items.

The Moon Landing Exhibit by the U.S. Post Office

The Mission Houses Museum Diorama of Hawaiian Postal History.



LIST OF EXHIBITS 1970 CHAMPION OF CHAMPIONS CLASS THIRD WORLD SERIES OF PHILATELY

FRAME NO.		GRAND AWARD
431-445	U.S. 1869 Issues—Selections from a Specialized Collection. Essays, Proofs, Varieties, Cancels, Usages, Inverts and Re-Issues. Margaret L. Wunsch Aurora, Ill.	SESCAL Los Angeles
446-450	French Maritime Post-on Covers. A Display of Collecting Possibilities in this Field. Dr. Stewart J. Richie Kingston, N.Y.	UNIPEX Syracuse
451-456	FLORIDA—The Manuscript Postmarks. A Selection of pre-1855 Rare Florida Covers with Manuscript Postmarks. Robert Abelson Chicago Ill.	MEMPEX Memphis
457-467	Confederate States of America. Sherrell Nunnelley Louisville, Ky.	NOPEX New Orleans
468-484	Canada's Registry System, 1827-1911. Horace W. Harrison Baltimore, Md.	ROMPEX Denver
485-504	Canal Zone and its Varieties. Alfred R. Bew Atlantic City, N.J.	SOJEX Atlantic City
505-520	U.S. Covers, Stamps and Proofs from the Bishop Marks of 1783 to 1900. J. King Horner Baltimore, Md.	SEPAD Philadelphia
521-530	Postal History—Turkish Occupation of Bosnia and Herzegovina. William E. Waste San Francisco, Calif.	NOJEX Newark
531-542	ANTIGUA—Through the Tercentenary Issue Showing Stampless Covers, Die and Plate Proofs, Specimen Stamps, Mint and Used Stamps, Multiples, and Stamps on Cover. Mark Swetland Madison, N.J.	FLOREX Miami
543-551	19th Century United States—A Unique Collection of all Major Catalog Numbers Plus Many Varieties. William H. Schilling Minneapolis, Minn.	BALPEX Baltimore



OPEN CLASSIFICATION

NOTE: Numbering of frames is a matter of convenience in designing the exhibition layout. It is not intended to place undue emphasis on any particular exhibit or sector.

CLASSIFICATION	FRAME NO.	DESCRIPTION AND EXHIBITOR
UNITED NATIONS		
III	1-7	First Day Covers with Marginal Inscription Blocks—First Sixteen Years of Commemoratives. Lloyd H. Flickinger Pearl City, Hawaii
PACIFIC ISLANDS & TERRITORIES		
Ia	8-13	Proofs and Essays of Hawaii—Selected Pages from a Highly Specialized Collection of Essays and Proofs of the Postal Issues, Stationery and Revenue Issues. Robert E. Van Dyke Honolulu, Hawaii
Ib	14-23	The Postal Markings of Hawaii. A Representative Showing from a Study Collection Illustrating the Broad Spectrum of Hawaii's Postal Markings between 1820 and 1900. Edward J. Burns Honolulu, Hawaii
Ic	24-30	Tonga—The Friendly Islands. All Major Issues. Samuel Schlesinger Denver, Colo.
Ia	31-40	The Type-Set Stamps of Hawaii. Alfred J. Ostheimer, III Honolulu, Hawaii
Ia	41-42	The Printing of the Provisional Government Issues of Hawaii. Wallace R. Beardsley Pittsburgh, Pa.
Ia	43-44	Hawaii Postal and Revenue Issues. William Hornbeck Los Angeles, Calif.
Ib	45-54	Hawaii: A Collection of the Unusual. Selected Pages of Hawaii Postal History from 1820 to 1900 with Emphasis on Early Markings, Overland Mexican Mail, and Early Rates to and from Hawaii. Robert E. Van Dyke Honolulu, Hawaii
Ib	55-58	A Study of Cancellations on both Local and Foreign Covers, plus Town and Special Cancels. Donald L. Collins Chicago, Ill.
Ic	59-68	The Spanish-American War. America's Philippines Interlude, 1898-1902. Gladys R. Van Dyke Honolulu, Hawaii
Ic	69-73	Nauru—1914 to 1970. Stamps and Postal History Including Censored World War I Covers. D. H. M. Clarke Colac, Victoria, Australia
UNITED STATES		
IIa	74-83	Classical Combinations: U.S. and Confederate Covers of the Period 1847-70 with Unusual Combinations of Different Issues, Types and Shades. Robert L.D. Davidson Fulton, Missouri
IIb	84-96	United States Stamps from Columbians to 1935. Commemoratives in Plate Blocks 1923-1935 and Blocks of Four 1893-1922, except Dollar Values which are in Singles. Also Selected pages of Singles from the Regular Issues. Lloyd H. Flickinger Pearl City, Hawaii
IIb	97-102	A Detailed Study of the 2¢ Washington Stamp which was Regularly Issued 1922-1929. Charles Yuspeh New Orleans, La.
IIb	103-106	U.S. Proofs on Card Gordon Sprague Portland, Me.
IIc	107-112	U.S. Vending and Affixing Machine Perforations. Nancy M. Yarnell Portland, Ore.
IIc	113-119	United States Airmail Stamps Mostly in Plate Number Blocks. Lloyd H. Flickinger Pearl City, Hawaii

IId	120-124	Ryukyu Islands. An Original Research Collection of the 1958 Ryukyu Currency Conversion Provisional Series. George W. MacLellan Jr. Santa Barbara, Calif.
IId	125-126	Territory of Guam—Complete Postal Issues with Selected Covers of the Brief Guam Guard Mail Period. Lloyd H. Flickinger Pearl City, Hawaii
IId	127-136	Ryukyu Islands (U.S. Administration): Highlights from an Original Research Collection; Essays, Proofs, Specimens, and all Major Errors, including Original Artist's designs and the only recorded examples of several Items. Melvin Schoberlin Aiea, Hawaii
IId	137-146	Canal Zone Rarities. Includes the 2¢ 1906 and 1¢ 1909 Inverted Centers, 5¢ 1912 with Cordoba Portrait, and Thatcher Ferry Bridge error plus many Unique Items. Norman Sunier Nom De Plume
IId	147-156	Ryukyu Islands Under U.S. Administration. Robert G. Sloan Toledo, Ore.
IId	157-160	Puerto Rico in the Spanish-American War, 1898-1902. Selections from a Specialized Study of the Early Days of the Puerto Rican Postal System under U.S. Administration. Gladys R. Van Dyke Honolulu, Hawaii
IId	161-164	The 1958 Currency Conversion Series of the Ryukyu Islands. LCDR Carroll A. Walsh Los Angeles, Calif.
IId	165-174	"The Ryukyu Islands" 1945 to 1970 Under Military and Civil Administration. A complete Collection of the Postal Emissions of the Ryukyu Islands Including Varieties, Errors and Provisional Issues. J. C. (Jake) Templeton, Jr. Smyrna, Ga.

GENERAL FOREIGN

IVa	175-184	A Specialized Selection of Irish Philately from Pre-Stamp Days to Present with Emphasis on Great Britain Stamps Overprinted for Use in Ireland. John W. Sherman III Leucadia, Calif.
IVa	185-194	Great Britain Postal History. "Steps to the Penny Black", Selected Pages. Rev. John S. Bain Santa Rosa, Calif.
IVa 1.	195-198	Madagascar (British Consular Mail). Selected Pages from a Specialized Collection with Reconstruction of Plates for Each Variety. James W. Shaver Barrington, Ill.
IVa 2.	199-201	Coronation of H. M. Queen Elizabeth II. Gordon Sprague Portland, Me.
IVd	202-206	Israel. Josephine A. Ferris Portland, Ore.
IVb	207-216	The Berlin Issues. Contains All of the Issues as listed by Scott and/or Michel from September 1948-October 1969. Ferd W. Brown Kailua, Hawaii
IVb	217-224	Esthonia—Postmaster Provisional Era 1918-20. Selected Pages from a Specialized Collection of Stamps and Covers with Provisional Overprints on Russian Stamps, Manuscript Cancellations, Russian Postmarks and Provisional Local Cancellations. Henry J. Stromberg Encinitas, Calif.
IVc	225-234	Sudan—Almost Complete According to Gibbons. Henry Whittaker Victoria, B.C. Canada
IVd	235-244	China 1818-1970. Selected Pages from a Specialized Study of Stamps, Stationery and Postal History, Including Foreign Post Offices, Locals, Tibet and Manchukuo. L. J. G. and Mrs. D. Franks Christchurch, New Zealand
IVd	245-252	Specimen Stamps of China, 1960-70. Selected Pages. Carrie M. Walsh Los Angeles, Calif.
IVf	253-256	Zeppelin Stamps Worldwide. Selected Album Pages from a Specialized Collection, 1928-38. Abe Kleinot Cincinnati, Ohio

- | | | |
|-----|---------|---|
| IVf | 257-260 | Esthonia Airposts 1920-28. Selected Pages from a Specialized Collection of mint and used Stamps with Varieties and Shades. Presented in Singles, Pairs, Strips, Blocks and Flown Covers.
Henry J. Stromberg
Encinitas, Calif. |
| IVf | 261-267 | Philippine Islands Air Mail Service by U.S. Army 1925 to 1933.
William J. Oliver
Sacramento, Calif. |

POSTAL HISTORY

- | | | |
|-----------|---------|--|
| Va | 268-270 | Ryukyu First Day Covers.
Gerald Fink
Petaluma, Calif. |
| IVf | 271-275 | Columbia, South America. 50 Years of SCADTA-AVIANCA, Airmail History of the First Privately Owned and Operated Airline in the World.
George W. Hoffman
Lakeland, Fla. |
| Va | 276-282 | "Saga of a Yankee Soldier". The Historical Civil War Covers of Union General John Palmer, with Historic Philatelic Annotations of the Post War Champion in American Politics.
James H. Sorenson
Omaha, Nebr. |
| Va | 283-287 | Postal History of Persia on Covers.
Dorothy M. Stump
Devon, Pa. |
| Va | 288-296 | 200 Years of Dutch Indies Postal History.
Harold N. Zalstein
Brooklyn, N.Y. |
| Va | 297-300 | The Old Dominion and the War for Southern Independence; Selected Pages of Confederate Virginia's Postal History.
Dr. Daniel C. Warren
Fort Sam Houston, Tex. |
| Va | 301-306 | South Pacific Postal History. A Specialized Collection from the Missionary Period to Just After the Turn of the Century.
Stanley C. Jersey
Oak Park, Ill. |
| Va Junior | 307-308 | United Nations/Geneva First Day Covers with Official Geneva Cachet. (Junior)
James Hofmann
New Salisbury, Ind. |
| Vb Junior | 309 | United States Flying History—Tracing the History of Flight to the Present Date (Junior).
Tony Sloss
Portola Valley, Calif. |
| Vb | 310-316 | Ornaments on RPO Cancells of British Columbia. Alone Among Canadian Railway Post Offices Some British Columbia Clerks Used Symbols Instead of Numbers.
R. Thurlow Fraser
Rossland, B.C. Canada |
| Vb | 317-322 | Western Australia. A Study of Postal History 1854 to 1913, Including Numeral, Letter, Registered and other Obliterations.
Charles A. Lawlor
Finley, N.S.W. Australia |

POSTAL STATIONERY

- | | | |
|----|---------|---|
| VI | 323-324 | Wells Fargo In Hawaii. Selections from a Specialized Collection of Postal Stationery Issued by Wells Fargo, Many Rare Colors, Types and Uses to and from Hawaii.
Robert E. Van Dyke
Honolulu, Hawaii |
| VI | 325-330 | U.S. Stationery Overprinted for the Philippines—An Original Research Study to Allocate the Stationery to the Proper Original Orders. The Many Resulting Proposed Catalog Changes are Shown.
Bradley B. Horton
Ponoo City, Okla. |
| VI | 331-335 | Hawaiian Postal Stationery. The Stamped Envelopes of Hawaii.
Albert J. Schwalm
Houston, Texas |

TOPICALS

- | | | |
|------|---------|---|
| VIIa | 336-338 | "Rehabilitation on Stamps". Depicts a Man's Concern for the Return of the Disabled to Productive Life Through Rehabilitation.
Vlad F. Ratay
Denver, Colo. |
| VIIa | 339-342 | Flowers and Their Families—Selected Pages.
Eva Eastman
Sacramento, Calif. |
| VIIa | 343-349 | Navigators of the Pacific. Voyages of Exploration from the Dawn of History to the 19th Century.
Elizabeth Ashworth
Honolulu, Hawaii |

VIIa	350-352	Europa in Part Printed Pages. Gordon Sprague	Portland, Me.
VIIa	353-354	An International Cat Show, by a Licensed American Cat Fanciers Association Judge. Betty B. DeHay	Kailua, Hawaii
VIIb	355-360	Duty, Honor, Country—U.S. Army Officers on Stamps. Capt. Daniel F. Vooyo	El Paso, Texas
VIIa	361-368	Birds on Stamps, Various Nations and Their Birds, Native and Imported. Harold N. Androus	Honolulu, Hawaii
VIIa	369-378	"Lindberghiana." A Philatelic Salute to Charles A. Lindbergh. Jack E. Bettencourt	Ben Lomond, Calif.
VIIa	379-383	The Official Uses of Hawaii. Government Bureaus and Franks. Hawaii's Official Stamps on Cover, Rare Government and Royal Franking Privileges. Robert E. Van Dyke	Honolulu, Hawaii
VIIa	384-386	Christmas Seals and Philately. G. Joe Zimmerman	Rossville, Ill.
VIIa	387-394	The History of Soccer in the Olympic Games, Including All Varieties and Errors. Barbara T. Williams	Reseda, Calif.
VIIa	395-404	The Virgin Mary in Art. Selected Pages from a Collection of The Blessed Virgin in Philately. W. J. Hoffman	Orange, Calif.
VIIb	405-414	Selected Pages from a NATO Collection—The North Atlantic Treaty Organization—Europe's Sword and Shield. Lt. Col. Nancy Morrow	Honolulu, Hawaii
VIIb	415-416	Heraldry—Representative Pages from a Collection of Heraldic Devices on Stamps. Halla I Shaver	Barrington, Ill.
VIIb Junior	417-418	U.S. Fighting Ships of World War II (Junior). Robert L. Lay	Canoga Park, Calif.
VIIa Junior	419-420	Topsy Truvy Turtles (Junior). Nancy J. Williams	Reseda, Calif.
VIIb	421-423	Birds and the Bible. The Bird as a Religious Entity. Lei Chiswick	Honolulu, Hawaii
		SPECIAL EXHIBITS (NON-COMPETITIVE)	
	424-430	THE HENRY C. HITT STUDY OF THE HAWAII TWO CENT BROWN ISSUE OF 1894. Prepared Between 1924 and 1938. Enlarged and Corrected by Present Owner. Used as Basis for Chapter 27 of Meyer-Harris. Robert E. Van Dyke	Honolulu, Hawaii

 **HAWAIIAN** 

PRINTING COMPANY LTD.

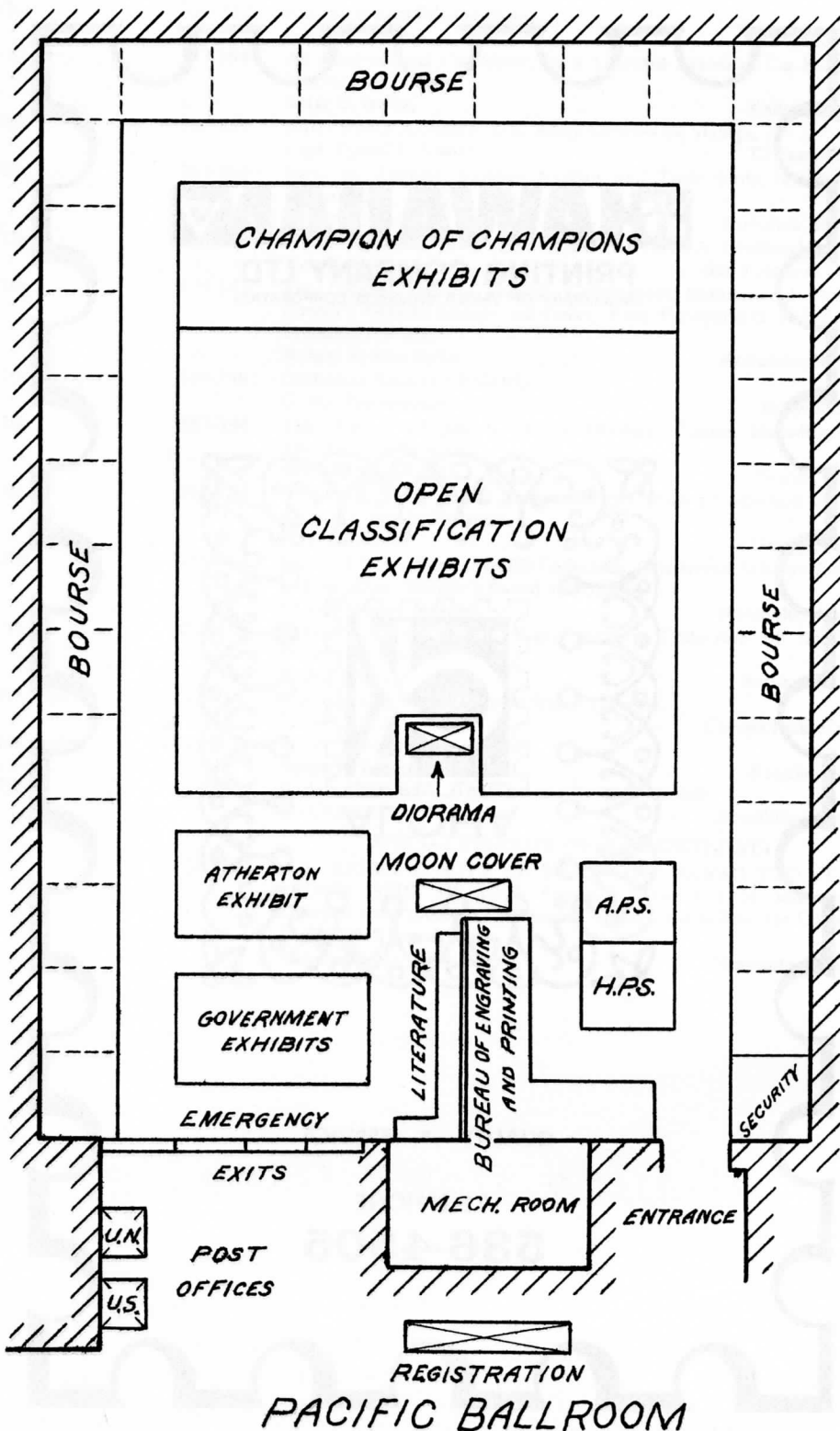
SUBSIDIARY OF VANIER GRAPHICS CORPORATION



QUALITY • SERVICE

TELEPHONE

536-4505



HAPEX-APS 70 BOURSE

Bourse

1. HAWAII STAMP & COIN, 2122 Kalakaua Ave., Honolulu, Hi. 96815.
2. PACIFIC STAMP & COIN, San Diego, Calif.
3. RICHARD WOLFFERS, INC. 127 Kearney Street, San Francisco, Calif. 94108.
4. BEAR STAMPS, P.O. Box 8741, Honolulu, Hi. 96815.
5. AMERICAN PHILATELIC BROKERAGES, P.O. Box 22, Provo, Utah, 84601.
6. ERIC ETKIN LTD. 245 Powell Street, San Francisco, Calif. 94102.
7. CLIFF HORST, JR. 41751 Chiltern Drive, Fremont, Calif. 94538.
8. HENRY M. SPELMAN III, P.O. Box 488, Lexington, Mass. 02173.
9. E.A. DIMMICK, P.O. Box 498, Cupertino, Calif. 95014.
11. RUSSELL S. BELL, Box Z, Kirkland, Washington.
12. HAMERNICK STAMP CO. 522 Rice Street, St. Paul, Minn. 55103.
13. STANLEY R. HILL, 11408 N.E. Skidmore Street, Portland, Oregon, 97220.
14. ROY E. DELAFOSSE, JR. 1785 Samaria Trail, Tucker, Ga. 30084.
15. PAGODA STAMPS AND COINS, Box 10355, Honolulu, Hawaii, 96816.
16. ZIM'S STAMPS AND SEALS, 117 South Chicago St., Rossville, Illinois, 60963.
18. PAUL VON STEIN, Dunedin, Fla. 33528.
19. BURTON DOLING, 4343 Van Nuys Blvd., Sherman Oaks, Calif. 91403.
20. KEW STAMPS, P.O. Box 956, Beverly Hills, Calif. 90210.
22. THE STAMP DEN, 1402 N.E. 40th Street, Seattle, Wash. 98105.
- 23-24 ROBERT A. SIEGEL, Auction Galleries, Inc., 10 East 52nd Street, New York, N.Y. 10022.
25. JAMES A. CORBETT & CO., P.O. Box 793, Carmichael, Calif. 95608.
28. STAMPS OF OLD HAWAII, 158 Hawaii Loa St., Honolulu, Hi.

READ

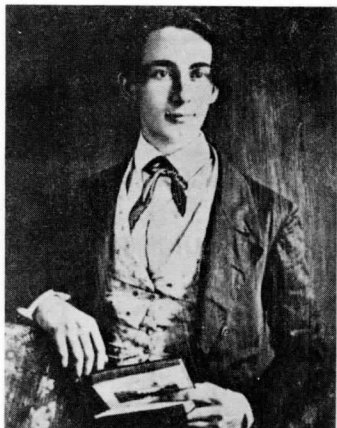
WESTERN STAMP COLLECTOR

THE Source of MORE Philatelic NEWS
Published Every Tuesday and Saturday

Send For Free Sample Copy

WESTERN STAMP COLLECTOR

P. O. Box 10, Albany, Oregon 97321



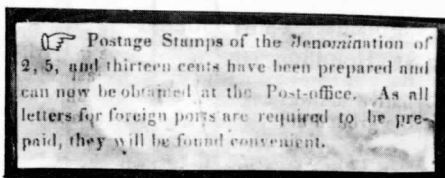
HENRY MARTYN WHITNEY HAWAII'S FIRST POSTMASTER

Born June 5, 1824 at Waimea, Kauai, of missionary parentage; sent to U.S. to be educated in 1831; returned November 9, 1849 at the request of the government to run the government printing office. Whitney retired in 1856 to become the full time printer-publisher and founder, in August 1856, of the "Pacific Commercial Advertiser" predecessor of our present morning paper.

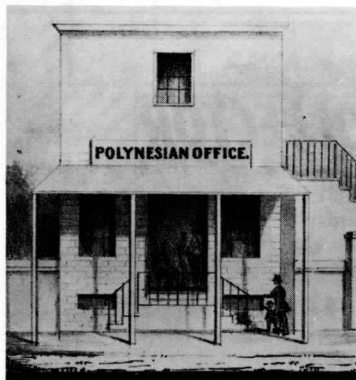


THE MISSIONARIES ARE PRINTED

On October 4, 1851 the above notice appeared in the "Polynesian". Hawaii's postage stamps were on their way to becoming the world's greatest philatelic rarities.



POLYNESIAN OFFICE HONOLULU POST OFFICE 1851-1853



Henry Whitney settled into the position of printer of the government newspaper "The Polynesian". On December 22, 1850 little more than a year after his return home he was appointed Hawaii's first postmaster although until the middle of June 1851 the post office continued to be at the Custom House and duties of the Collector of Customs continued to include postal service. By the end of 1851 part of the downstairs had officially become the post office.



The Typeset Stamps of Hawaii

*Our Founder printed them—both
the Missionaries and the Numerals. He
did the Missionaries a few years before
he started the newspaper, then did the
Numerals in our own shop.*

Sorry, we don't have any left.

The Honolulu Advertiser
Hawaii's Prizewinning Newspaper

A Must for the Collector of U.S.

THE UNITED STATES TWO CENT RED BROWN of 1883-1887

IN TWO VOLUMES

By Edward L. Willard

An intensive study of one of the most interesting United States stamps of the 19th century, based upon the author's fifty years of collecting and research of this single stamp.

It's the most comprehensive work on this subject ever undertaken, and it's done well.

The Two Cent Red Brown is a stamp which lends itself to specialization at modest expense and as a consequence it is a most popular stamp for the collector who seeks fulfillment in study and discovery. Willard's fascinating book will not only serve to acquaint you thoroughly with this stamp but will whet your appetite if you are seeking a new field of interest.

If you already collect Two Cent Red Brown you will find the book's depth of coverage more than adequate and a great source of information for your further study of the stamp. If you haven't already considered the Two Cent Red Brown for specialization, this book will awaken you to its possibilities.

The first volume concerns the stamp itself from its background, design and preparation, plate varieties, non-constant varieties, to usage. It contains no fewer than 103 plates. Volume Two deals with the cancellation found on the stamp, including fancy cancels, rapid machine cancels, double ovals, ellipses, etc. Hundreds are illustrated, both on and off cover.

This is a set of books you will want to add to your library . . . It's a set of books you will want to keep handy for constant reference.

SET OF TWO VOLUMES

Beautifully printed on heavy coated paper.

Richly bound in cloth, gold stamped.

\$20.00 postpaid

H. L. Lindquist Publications, Inc.
153 Waverly Place
New York, N.Y. 10014

Date

Please send me copy (copies) of the new 2-volume book
THE UNITED STATES TWO CENT RED BROWN OF 1883-1887 by
Edward L. Willard at \$20.00 per set.

Enclosed \$..... in full payment.

NAME

STREET

CITY STATE ZIP

New York Residents Please Add Appropriate Sales Tax

THIRD NATIONAL PHILATELIC LITERATURE COMPETITION

Sponsored jointly by the Hawaiian Philatelic Society and the APS Writers Unit.

AWARDS

1. The Sylvester Colby Trophy for the best handbook written and published in the United States.
2. The Dr. Frank O. Brasch Trophy for the best philatelic journal or newspaper published by a specialty group.
3. The James M. Chemi Trophy for the best newspaper stamp column in the daily press.
4. Further awards as merited by the Hawaiian Philatelic Society in the Competitive Division.

LIST OF EXHIBITS

DIVISION 1—HANDBOOKS

1. "Theatre Philatelic" by Harrold C. Shiffler, a handbook of philatelic terms listing people, places, and things related to the legitimate theatre; encyclopedia, checklist by country, bibliography, illustrated. Published by the American Topical Association in 1969.
2. "German-English Philatelic Dictionary" edited by George A. Blizil; 102 pages of updated words and terms used in the hobby. Published in October 1969 by the Germany Philatelic Society as handbook No. 4 of the GPS Library series.
3. "Handbook & Specialized Catalogue of Postal Stationery of the Ryukyu Islands (Issued Under United States Administration)": Part 1—The Provisional Issues of the Gunto (island groups) of Amami, Miyako, Okinawa, and Yaeyama (1945-1951); Part 2—Issues of United States Military Government of the Ryukyu Islands, United States Civil Administration of the Ryukyu Islands, Ryukyu Provisional Central Government, and Government of the Ryukyu Islands (1948-1970), by Melvin Schoberlin. Published in 1968 and 1970 by the Society of Philatelic Americans.
4. "Supplement #4 to The Catalogue of Marian Stamps" by W.J. Hoffman. Published by author on May 30, 1970.
5. "Texas, The Drama of Its Postal Past" by Alex. L. ter Braake. Published on March 20, 1970 by The American Philatelic Society.
6. "The Essay-Proof Society Catalog of the Essays and Proofs of British North America" edited by Kenneth Minuse and Robert H. Pratt. Published on August 15, 1970 by The Essay-Proof Society, Inc.
7. "A Study of the Two Cent Red Brown 1883-87" by Edward L. Willard. Published by Lindquist Publications in June 1970.
8. "UPSS—United States Postal Card Catalog 25th Anniversary Edition" by Clark H. Stevens; descriptions, illustrations and prices of U.S. cards 1873-1970. Published by Van Dahl Publishing Co. in October 1970.
9. "United States Air Mail Field and Airport Mail Facility Cancellations: A Specialized Description and Analysis" by Dr. Perham C. Nahl and Robert B. Sales; listing by dates of use, and illustrating all known postmarks. Published by the First Flight Federation in December 1969.
10. "World Postal Stationery Catalog, Sections 14 and 15", Edward G. Fladung, editor. Published by Higgins & Gage, Inc. in 1969 and 1970.
11. "The Revenue Stamps of Mexico" by Richard B. Stevens. Published by the Elmhurst Philatelic Society on November 15, 1968.

12. "Alabama—A Glimpse at its Postal History" by Gilbert A. Penny. Published by the G & P Stamp Co. in July 1969.
13. "A Handbook for First Day Cover Collectors" by Monte Eiserman; guide to the various facets of FDC collecting. Published by the American First Day Cover Society as their Handbook No. 3 from November 1969—September 1970.
14. "Handbook of Early Chinese Communist Stamps 1928-1938" by Hugh W. Hubbard. Published by the China Stamp Society in August 1969.
15. "Post Offices of Oregon, Washington and Idaho" by Dr. Robert L. Landis. Published by the author in July 1969.
16. "Arizona Philatelic Workshop Handbook" compiled by Albert Friesen. Published in 1970 jointly by the Tucson Stamp Club, Arizona Philatelic Rangers, Arizona Federation of Stamp Clubs and Phoenix Philatelic Association Inc.
17. "Handbook on U.S. Luminescent Stamps" by Alfred G. Boerger. Published by the author September 26, 1970.

DIVISION 2—PHILATELIC JOURNALS AND NEWSPAPERS OF SPECIALTY GROUPS

1. "The United States Specialist", monthly journal of the Bureau Issues Association, Inc. Volume 40 (1969); editor, Robert C. Masters, 2,200 circulation.
2. "The German Postal Specialist", monthly publication of the Germany Philatelic Society, Volume XX (1969); it is the only journal of its type printed in the English language in the U.S. Editor, George A. Blizil.
3. "Postal Stationery", official journal of the United Postal Stationery Society, Inc., published bimonthly; editor, Donna von Stein, circulation 1,050.
4. "From the Dragon's Den", quarterly publication of the Ryukyu Philatelic Specialists Society; encompasses philatelic data of Ryukyu Islands of a cultural, historical, and educational nature more especially for the specialist; also current philatelic news. Editor, J.C. Templeton Jr., circulation 125.
5. "Journal of the Rossica Society of Russian Philately", a highly specialized publication with worldwide contributions on the stamps and postal history of Russia and States; published twice yearly; editor, Andrew Cronin, circulation 500.
6. "The Marian Philatelist", bimonthly bulletin of the Marian Philatelic Study Group of COROS; editor, W. J. Hoffman, Circulation 380.
7. "The Airpost Journal", monthly official organ of the American Air Mail Society, covering all branches of aerophilately; editor, Robert E. Haring, circulation 1,200.
8. "Ice Cap News", official bimonthly publication of the American Society of Polar Philatelists; editor, Bernard V. Coyne, circulation 500.
9. "Journal of Sports Philately", bimonthly publication of the Sports Philatelists International; editor, John La Porta.
10. "The Israel Philatelist", bimonthly journal of the Society of Israel Philatelists, devoted to the philately of the Holy Land; editor, Burton S. Adlerblum, circulation 1,600.
11. "Western Express", quarterly research journal of early western mails of the Western Cover Society; editor, M. C. Nathan.
12. "Philatelic Literature Review", quarterly publication of the Philatelic Literature Association (Volume 18, Nos. 1—4, 1969); editor, Daniel W. Vooy, circulation 1,000.
13. "The Chronicle of the U.S. Classic Postal Issues", official quarterly publication of the U.S. Philatelic Classics Society, Inc. (APS Unit 11); associate editor, Edwin A. Christ, circulation 797.
14. "Vatican Notes", bimonthly publication of the Vatican Philatelic Society, is distributed free to all members of the society, Editor Rev. Herbert A. Phinney.

RYUKYU ISLANDS

UNDER U. S. CIVIL ADMINISTRATION

琉球郵便



ONE OF THE RAREST AIRMAIL ERRORS IN THE WORLD
 Scott's C19-a..INVERTED OVERPRINT... "9¢" missing;
 (stamp #91(overprint #10) If we could see a full sheet of these
 inverts we would see the overprints were vertically displaced
 as well as inverted...that there would be an extra "9¢" in the
 entire upper margin, and none in the bottom row of stamps.

Less than a dozen copies are known and documented. Though
 our copy will eventually be sold via auction, there are many
 other valuable and scarce items for sale from our extensive stock.
 These include *early provisionals*; MIHONS; *varieties & errors*;
 PERF. VARIATIONS: *shades*; POSTAL STATIONERY. ETC.

One phase being ignored at the moment is the fluorescent
 differences in Ryukyu stamps. Much of the future value of your
 stamps may be found in this area. (We fluoresce ALL issues that
 are sold for your convenience.)

Your request for literature will receive personal attention.
 Please give us as much information about your collection so we
 may suggest how to help. P.S. continue to buy new issues from
 your favorite dealer, and request perf., fluorescing differences,
 & varieties from us.

Joe Bush P.O. Box 665 Bonita, California 92002

15. "Los Angeles Philatelic Society—Quarterly Journal", published by the oldest and largest society in Southern California, features original material of world-wide interest; editor, Gordon B. Garrett, circulation 300.
16. "Egyptian Topics", bimonthly journal for specialists of Egypt and the Sudan for the North American membership of the Philatelic Society of Egypt; editor, Gordon B. Garrett, circulation 200.
17. "The British Caribbean Philatelic Journal", published bimonthly by the British Caribbean Philatelic Study Group, Unit 27 of the American Philatelic Society; editor, COL Fred F. Seifert; circulation 400.
18. "The Vermont Philatelist", the official quarterly publication of the Vermont Philatelic Society, and principally devoted to Vermont postal history; editor, Lhoyd T. Hayward, circulation over 250.
19. "Topical Time", bimonthly journal of topical philately, official publication of the American Topical Association, Inc., editor, Jerome Husak, circulation 10,000.
20. "La Posta", the bimonthly research bulletin of the Mountain and Desert West Postal History Research Society; editor, Richard W. Helbock, circulation 50.
21. "The Canal Zone Philatelist", quarterly journal of the Canal Zone Study Group devoted to all aspects of Canal Zone philately; editor, Gilbert N. Plass, circulation 290.
22. "France and Colonies Philatelist", (Oct. 69–July 70), quarterly journal of the France and Colonies Philatelic Society, Inc.; editor, Robert G. Stone, circulation 400.
23. "Bulletin of the Polonus Philatelic Society", since 1939 published monthly to promote Polish philately and stamps of Poland.
24. "Portu-Info", the quarterly official journal of the International Society for Portuguese Philately; editor, Thomas B. Quinn, circulation 200.
25. "First Days", the bimonthly journal of the American First Day Cover Society; editor, Sol Koved.

We carry in stock—

U.S., Hawaii, Japan, China, Ryukyus,
United Nations and New Issues. Also
stamp and coin supplies.

ARCADE STAMP & COIN SHOP

217 S. King St., Room 9
near Alakea
Honolulu, Hawaii 96813

Phone 531-2320

Come in and Browse Around.

*Marc Seastron
for
Carol & Mary*

**Fine Jewels by
World Famous Designers**

Ala Moana Center

Phone 946-7226

26. "The China Clipper", bimonthly official publication of the China Stamp Society; editor, Alexander M. Dickie.

DIVISION 3—NEWSPAPER COLUMNS

SECTION A—Under 10,000 circulation

1. "Stamping Around Sullivan" by Steve Ritzer in the Monticello (NY) Republican-Watchman; weekly, circulation under 10,000.

SECTION B—10,000 to 100,000 circulation

1. "Kaleidoscope" by George A. Blizil for readers of the Hollywood Sun-Tattler in the Florida "Gold Coast" area; weekly, circulation 45,000.

2. "Stamp Facts" by Robert H. Frederick in the Chronicle-Telegram (Elyria, Ohio); weekly, circulation 25,000.

3. "Stamping Around" by Lea Blauvelt, a weekly column appearing in the "Sunday Scene Magazine" of the South Bay Daily Breeze (Torrance, Calif.); circulation 80,000.

SECTION C—Over 100,000 circulation

1. "Stamps" by David Lidman, stamps editor of The New York Times; weekly, circulation 1,500,000.

2. "Philatelic News" by Belmont Faries, weekly stamp column published in the Sunday Star (Washington, D. C.); circulation 360,000.

DIVISION 4—NON-COMPETITIVE

1. "Japanese Philately", published bimonthly by the International Society for Japanese Philately, Inc.; a scholarly magazine consisting of 40 or more pages and recognized as one of the most authoritative and interesting publications in the philatelic world; editor, Robert M. Spaulding, Jr., circulation 1,100. (Note: winner of Division 2 in 1968).

2. "Stories to Collect Stamps By" by Herman "Pat" Herst Jr.; first printing in December 1968.

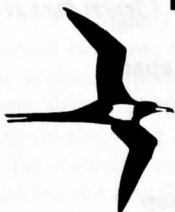
3. "Handbook of Irish Philately" by David Feldman, a comprehensive and authoritative work (illustrated) on Irish stamps, postal stationery, etc.; first edition 1968. (Note: winner of silver gilt at B.P.E. and Stampex 1969).

4. "Guatemala—I, a handbook of Guatemala stamps and postal history up to 1902;" edited by Roland Goodman for the International Society of Guatemala Collectors; published by Robson Lowe in Spring 1969.

5. "Canadian Stamp Journal", the only magazine devoted entirely to Canadian philatelic material including plate blocks, FDC prices, research, new discoveries; published 4 to 10 times per year by George J. Rogers; circulation 450.

6. Program for HAPEX-APS 70 compiled by Ted. E. Ashworth.

TOURS • CRUISES • HOTELS

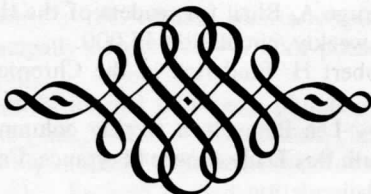


Executive Travel

700 BISHOP STREET, SUITE 303
HONOLULU, HAWAII 96813
TEL. 531-1353

GO ANYWHERE BY AIR OR SURFACE

7. "Walla's United Nations International Newsletter; published monthly by Walla Stamps, contains information on stamps and posts, all phases of UN philately of both New York and Geneva; circulation 1,000.



FIRST DAY COVER OF THE REPUBLIC OF HAWAII

The stamps of the Republic of Hawaii were issued on February 28, 1894. A contest seeking suitable designs was won by a postal employee, in the registry division, E.W. Holdsworth. Hawaii officially became a republic, July 4, 1894.



Honolulu Stamp & Coin Company

**United States • Hawaiian • Japan
British Colonies & Older Issues**

Moana Surfrider Hotel
2365 Kalakaua Ave.

"Hawaii's Oldest Stamp Shop"

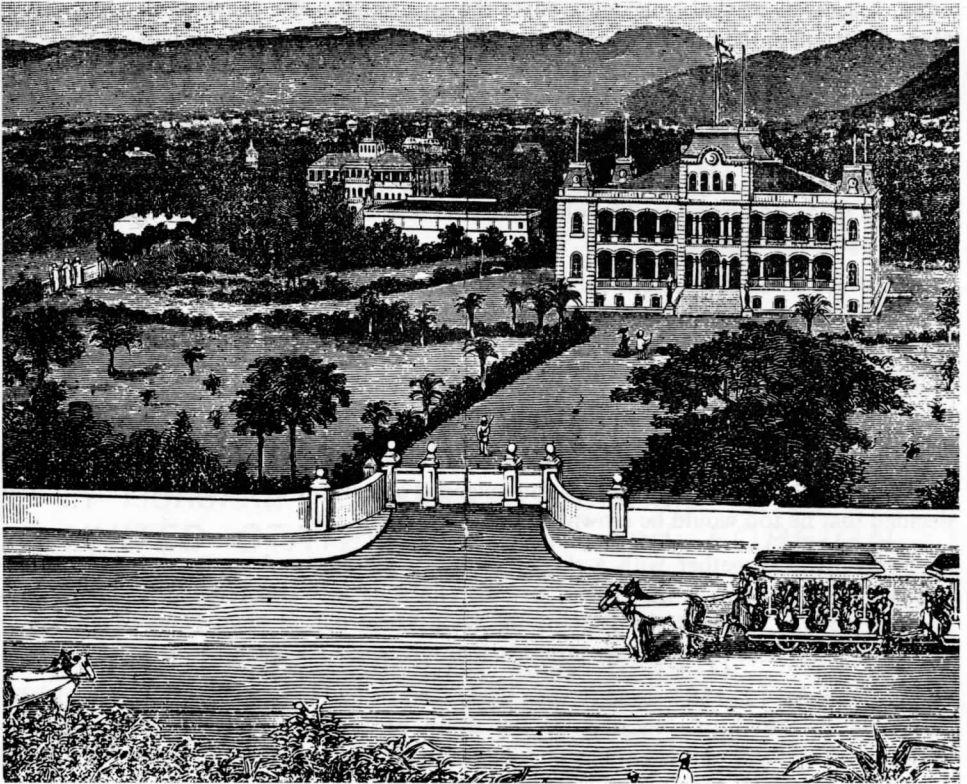
FLOYD W. FITZPATRICK
Phone 923-4288



APS 18327 Collectors Club of New York

IOLANI PALACE—A SYMBOL OF THINGS PAST!

By Melvin Schoberlin



Iolani Palace is unique in the United States of America. Many monarchies have ruled or claimed the areas that have since become a part of the United States. But of all the states, only Hawaii was once a kingdom in its own right, self-governed, stable and civilized, treating with the great powers of the world—as a child might supplicate with giants, being alternately devoured and disgorged. Thus, Iolani—the home of the last rulers of Hawaii, King Kalakaua and his sister and successor Queen Liliuokalani—is the only true royal palace under the American flag.

Traditions, very possibly older than the Hawaiian people, underlay the selection of a name for the royal residence. The ancient word *io* (meaning hawk or, more loosely, bird) had once been regarded as the most sacred word in the language—to be uttered only in secret by the highest chieftains or priests in the most sacred *heiau* (temples). The word *lani* meant heavens, sky, or the title of the highest chieftain. A combining of the two words, *io-lani*, represented the Bird of Heaven—all-seeing, the earthly symbol for the Supreme Being. The first Kamehameha had astoundingly violated the old *kapu* and the sanctity of the word by giving the name Iolani to his son, an act signifying the twilight of *kapu*, for now the name was on the lips of all people. And Iolani was the name finally selected for the first Palace.

The original building was constructed of coral blocks, one-storied, with a high basement and a cupola in the form of a large look-out room at the top. A wide *lanai* (veranda) surrounded the building. Originally, a high wall of rough coral blocks enclosed the grounds, and visitors were admitted through a wicket guarded by a single sentinel.

Five Hawaiian kings reigned here—Kamehameha III, Kamehameha IV, Kamehameha V, Lunalilo, and Kalakaua. The Palace itself was more given to public purposes—to audience chambers, reception rooms, and governmental offices—than to living quarters. When more office space was needed to accommodate the government of a growing kingdom—which Mark Twain described in 1866 as having all “the machinery of a Great Eastern packed in a sardine box”—the building was remodeled, partitioned, and patched. By 1876 the coral palace had fallen into such a state that further expenditure for repairs was considered inadvisable. Fortunately, in the same year King Kalakaua concluded a treaty of reciprocity with the United States, and thereafter sugar ascended to a throne of its own. Hawaii prospered. Dignity and need required a proper palace, and increased sugar revenues made one possible. The old coral structure was finally razed to make way for a more magnificent edifice.

Construction of the present Iolani palace began in August 1879. The corner stone was laid with Masonic ceremonies on Dec. 31, 1879, and on Dec. 27, 1882, St. John’s Day, completion was celebrated by a Masonic banquet.

King Kalakaua and Queen Kapiolani were the first monarchs to live in the new palace. They were also to be the principals in the only coronation in Hawaiian history.

In 1881 the two had made a grand tour of the capitals of Europe. The King, vastly impressed by the monarchical pomp and splendor so evident in the course of their tour, decided that he too would be crowned. And crowned he was.

Two crowns, together with a ring, a sword, a scepter, and appropriate robes, were ordered from London at the cost of £1000. The King then ordered a special pavilion to be built for the affair at the foot of the King Street palace steps. (This pavilion, later removed to a corner of the palace grounds, still serves as a bandstand.)

On February 12, 1883—exactly nine years after he had been elected by the Legislative Assembly to the throne vacated by the death of Lunalilo, who had proclaimed no successor—Kalakaua (as had some of his important European counterparts before him) crowned himself. He then placed a reginal chaplet upon the head of Queen Kapiolani.

Kalakaua’s reign was politically stormy—and severely reactionary in comparison with the brief reign of the pro-American and much-loved Lunalilo. Upon his death in 1891, he was succeeded by his sister Queen Liliuokalani, the only queen regent of Hawaii and the last monarch of the Kingdom. In 1893, Liliuokalani was abruptly deposed by a group of white residents who had plans of their own to annex the Kingdom to the United States. When President Cleveland refused to become a party to this ignominious plot, blocked annexation, and demanded that Queen Liliuokalani be restored to the throne, local politicians refused and instead established a Republic of Hawaii. The Republic endured only until a change of political winds in the United States eventually brought annexation, under President McKinley, on August 12, 1898. Two years later Hawaii became a United States Territory. It had taken less than a century for caucasian immigrants to gain control of Hawaii’s affairs.

Seeking to obliterate a monarchical emblem of its historical past, and at the same time hopeful of laying to rest the aspirations of royalists, the Provisional Government of Sanford Ballard Dole, in 1893, ordered the name of the palace changed to “Executive Building.” Under this official title it served as the capital of four governments—Provisional Government of Hawaii; Republic of Hawaii; Hawaii after Annexation; and, finally, Territory of Hawaii.

Queen Liliuokalani had been safely interred in her tomb in 1917, and by 1935 it was considered safe for the Territorial Legislature, by resolution, to restore the original name Iolani Palace.

H A P E X A.P.S. '70

We invite you to visit us at our booths #23 and #24 where you may obtain catalogues and examine the lots for the auction we are holding in Honolulu. It offers a splendid array of *UNITED STATES, HAWAII and FOREIGN STAMPS*

Friday Evening, Nov. 6, 1970

If you are not already on our mailing list we should be glad to send you catalogues of future auctions on request.

ROBERT A. SIEGEL AUCTION GALLERIES, Inc.
10 East 52nd Street New York, N.Y. 10022



THE HAWAIIAN PHILATELIC SOCIETY

Founded 1911

Meetings—Second Monday of each month, Ala Moana Banquet Hall, 7:30 p.m. Programs, swap meeting, monthly auction.

VISIT THE H.P.S. SALES BOOTH FOR YOUR HAPEX SOUVENIRS

“Missionary” labels and souvenir sheets

Hapex cachets

Hapex seals and souvenir sheets

philatelic ashtrays

Hawaiian Post Dispatch Service, stamps and cachets.

Commemorative medals.

*For information write P.O. Box 10115,
Honolulu, Hi. 96816*

MOON LANDING COVER



The historic moon landing exhibit will be shown in Hawaii for the first time at HAPEX-APS 70. Local residents will recall that the cover and master die passed through Honolulu when Apollo XI astronauts called here briefly on their way to Houston for decontamination upon their return from outer space. The die was more fortunate than the astronauts as it was processed ahead of the normal twenty one days, flown in a special plane to Washington and hustled to the office of Postmaster General Blount. Photographers were given a quick look and it was sent to the Bureau of Engraving and Printing where production of millions of copies of the 10¢ First Man on the Moon commemorative stamp was begun at once.

The moon letter, incidentally travelled the longest distance a piece of mail ever travelled, more than a half-million miles. Interestingly enough it was carried in less time than was required by the old Pony Express back in 1860 to deliver a piece of mail from Missouri to California. And one of those Pony Express letters cost \$5 a half ounce. The moon letter bore a 10¢ stamp, that's all.

COVERS

I maintain a broad stock of covers of the United States and Possessions (including Confederate). Strongest in material to about 1920. No modern FDC.

I will be happy to send selections on approval if you will let me know what you'd like to see. References, please.

HENRY M. SPELMAN III
P.O. Box 488
Lexington, Mass. 02173

APS



CSA

Stamps of Old Hawaii

- Stamps of the Royal Monarchy
- Stamps of the Provisional Government
- Stamps of the Republic of Hawaii
- Revenue Stamps • Railroad Stamps
- Covers and postcards of Hawaii
- Postmarks and cancels

COLONEL PAT HOGAN, USAF – Ret.

158 HAWAII LOA ST. • PHONE 373-2494 • HONOLULU, HAWAII



Robert E. Van Dyke
Collection

POSTMASTER GENERAL DAVID KALAKAUA

Born November 16, 1837 at Honolulu of a family of high and chiefly rank. For several years a postal clerk, succeeding in February 1863 PMG Alva K. Clark who was very dictatorial and unpopular. Here he remained till March 1865, when he was succeeded by A.P. Brickwood. He issued the first perforated issues. Probably the only postmaster ever to become king in an election between himself and Dowager Queen Emma in 1874. Died in San Francisco in January 1891. His sister became Queen Liliuokalani and was deposed in January 1893.

KEW STAMPS

Booth 20

P.O. Box 956

Beverly Hills, Calif. 90210

JAMES A. CORBETT & CO.

Booth 25

P.O. Box 793

Carmichael, Calif. 95608



POSTMASTER GENERAL ARTHUR P. BRICKWOOD

Postmaster General of Hawaii from March 31, 1865 to 1880, Hawaii's greatest postmaster abolished discrimination against native Hawaiians established by Postmaster General Alva Clark and gave them equal rights with foreigners. Natives had to wait to one side until all white men had been served. They were not permitted to have postal boxes.

Robert E. Van Dyke Collection

HONOLULU POST OFFICE



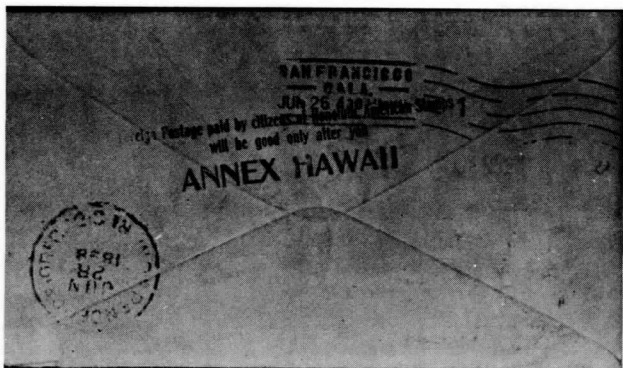
Robert E. Van Dyke
Collection

Erected in 1870 on the site of the old Polynesian Office where Whitney printed the first stamps of Hawaii in 1851. Whitney took over the old post office site for his book store and stationery offices. The building still stands and was occupied by the post office until May 1, 1922, when the new Federal Building and Post Office was erected. The building was used 'til the mid 1950's as a postal sub-station.

WINDWARD COLLECTORS...

The Windward Oahu Philatelic Society meets on the Second and fourth Tuesday of each month in the Kailua Library at 7:30 P.M. Membership open to all philatelists. Juniors welcome.

Program • Trading • Auction • Business meetings



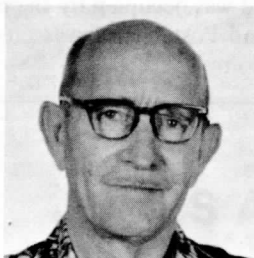
ANNEX HAWAII

An interesting cachet stamped on the reverse of a letter mailed by a member of the Oregon National Guard en route to Manila for service in the Spanish-American War. On being mailed at Honolulu, June 9, 1898, the cachet was applied over the sealed edges of the envelope and reads FOREIGN POSTAGE PAID BY CITIZENS OF HONOLULU / AMERICAN

STAMPS/WILL BE GOOD ONLY AFTER YOU/ANNEX HAWAII. There is nothing to show that this cachet was applied at the post office, but it probably was, because soldiers' mail written during the voyage out would normally be collected on the ship and taken directly to the main post office after arrival in Honolulu Harbor. Hawaii was annexed to the United States, August 12, 1898, and officially became a territory June 14, 1900.

KANEOHE REALTY

Your open door
to the good life...
a home of your own!



Lt. Col. C. Langley (S)
ASSOCIATE

Specialists in...

- ★ SALES
- ★ DEVELOPMENT
- ★ RENTALS

GEORGE W. CLARK

Principal Broker – Notary Public

Room 207
46-018 Kam Hwy.
Kaneohe Post Office Bldg.
Phone 235-2791 – 235-2373

THE STAMP DEN

10732 FIFTH AVE NE.
SEATTLE, WASHINGTON 98125

- **U.S.**

Early Stamps
Plate Blocks

- **JAPAN**

Kobans
Jingos
Offices Abroad

- **CHINA—KOREA**

- **WESTERN EUROPE**

- **FOREIGN SETS**

Collections Wanted

Booth #22

Mr. and Mrs. Lawrence M. Nathan

PAUL VON STEIN

U.S. CLASSIC STAMPS

•

DUNEDIN, FL 33528

•

Zim's Stamps and Seals

Rossville Illinois

'United States' Stamps and Covers
19th Century to Space—Lincoln Air
Mail—First Flights—Zeps—Metalics
Christmas Seals—Tied on's—First
Days Topicals—

*Something For Everyone
Just ask Joe or Beulah*

SEAL OF THE STATE OF HAWAII



The seal of the State of Hawaii is a reminder of Hawaii's historical past. It is a modification of the earlier monarchical seal, bearing the arms of the Kingdom. Emblazoned across this seal is the motto of the Kingdom of Hawaii, a memorable phrase uttered by King Kamehameha III in 1843 during a speech of thanksgiving to Her Britannic Majesty for having ordered the restoration of Hawaiian sovereignty: "*Ua mau ke ea o ka aina i ka pono*"—The life of the land is perpetuated by righteousness.

ROY E. DELAFOSSE, JR.

Booth 14

1785 Samaria Trail

Tucker, Ga. 30084

COME ELEVEN!

That's where you'll find Russ and Mother Bell (who usually reside in Box Z, Kirkland, Washington).

AND

A FREE STAMP PACKET (in exchange for your address)

ALL-COLOR NEW JAPAN CATALOG (just \$1)

CHRISTMAS STAMPS FROM EVERYWHERE

RYUKYU ISLANDS, COMPLETE

FAR EAST WESTERN EUROPEAN SETS

U.S. PLATE BLOCKS

ODDS AND ENDS

AND MONEY! (If you've something to sell) COME SAY HELLO

**ERIC ETKIN
LTD.**

245 Powell Street

San Francisco, California
94102

Bourse #6

CLIFF HORST, JR.

41751 Chiltern Drive

Fremont, California
94538

Booth #7

E.A. DIMMICK

P.O. Box 498

Cupertino, California 95014

Booth #9

Harold Holman

P.O. Box 416

Atwater, California 95301

Booth #10

APOLLO II MISSION COMMENTARY

CAPCOM: Tranquility Base, this is Houston. Could we get both of you on the camera for a minute, please?

ARMSTRONG: Say again, Houston.

CAPCOM: Roger. We'd like to get both of you in the field of the view of the camera for a minute.

CAPCOM: Neil and Buzz, the President of the United States is in his office now and would like to say a few words to you. Over.

ARMSTRONG: That would be an honor.

CAPCOM: Go ahead Mr. President, this is Houston. Out.

PRESIDENT NIXON: Neil and Buzz, I am talking to you by telephone from the Oval Room at the White House. And this certainly has to be the most historic telephone call ever made. I just can't tell you how proud we all are of what you . . . for every American, this has to be the proudest day of our lives. And for people all over the world, I am sure they, too, join with Americans, in recognizing what a feat this is. Because of what you have done, the heavens have become a part of man's world. And as you talk to us from the Sea of Tranquility, it inspires us to double our efforts to bring peace and tranquility to earth. For one priceless moment, in the whole history of man, all the people on this earth are truly one. One in their pride in what you have done. And one in our prayers, that you will return safely to earth.

ARMSTRONG: Thank you, Mr. President. It's a great honor and privilege for us to be here representing not only the United States but men of peace of all nations. And with interest and a curiosity and a vision for the future. It's an honor for us to be able to participate here today.

PRESIDENT NIXON: And thank you very much and I look forward—all of us look forward to seeing you on the Hornet on Thursday.

ARMSTRONG: Thank you.

ALDRIN: I look forward to that very much, sir.

PAGODA STAMPS & COINS

China, Japan, Ryukyus
Early Korea, Manchukuo & General
Foreign. Bought & Sold.

Box 10355

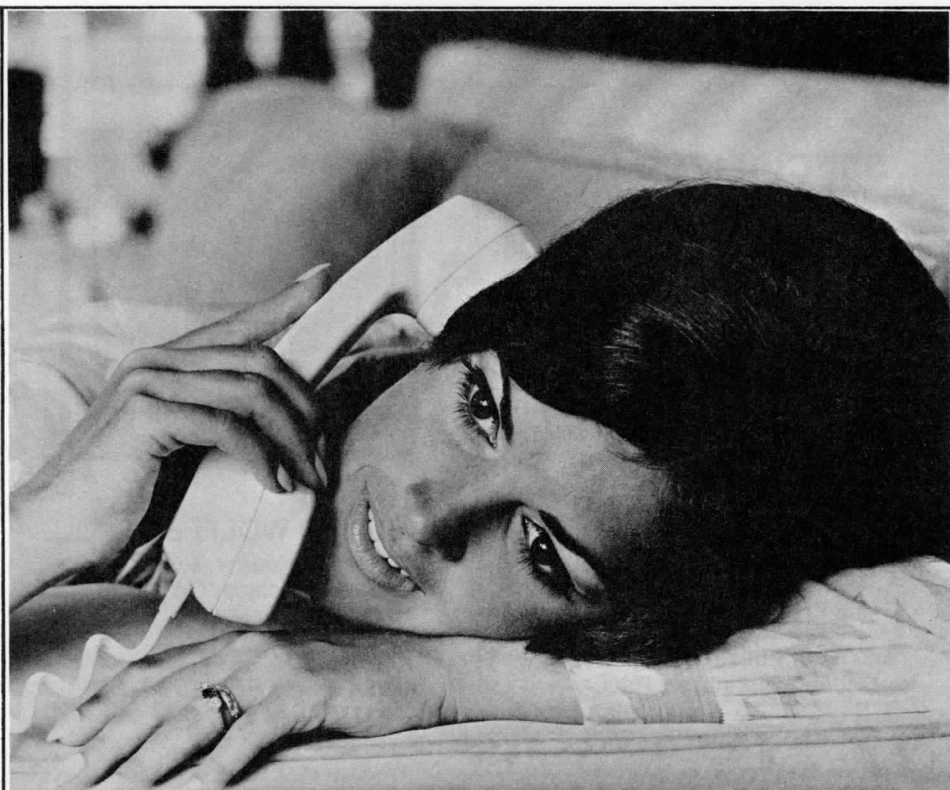
Honolulu, Hawaii 96816

HAMERNICK STAMP CO.

Booth 12

522 Rice St.

St. Paul, Minn. 55103



"I MISS YOU"

Simple words that mean so much. Long Distance lets you say them often . . . to stay close to family and friends even when you're oceans apart.

And phoning is surprisingly inexpensive.

IT COSTS ONLY \$3.30

for a 3-minute station-to-station call to seven western states after 5:00 p.m. weekdays and all day Saturday and Sunday. Station-to-station rates to the rest of the Mainland are as low as \$4.20 for the first three minutes.

HAWAIIAN  TELEPHONE

SOMEONE'S HOPING YOU'LL CALL

SPECIALIZED U.S.

No matter what the field, we try to stock it. Stop at Booth #5 and see if we can help you....

American Philatelic Brokerages

John Birkinbine, Pres.

P.O. Box 22 Provo, Utah 84601



RICHARD WOLFFERS, INC.

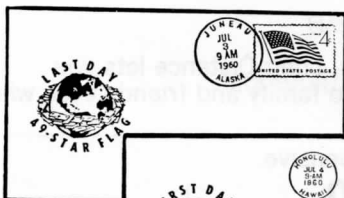
127 Kearny Street
San Francisco, CA 94108

ASK FOR FREE AUCTION
CATALOG, SALE Dec. 11-12, 1970

CLIP THIS AD

"HILL HAWAIIANS"

COMMEMORATING HAWAIIAN
STATEHOOD AND THE 50TH
STAR IN OLD GLORY



Present this
ad at time
of purchase at
our booth &
receive a \$1
discount.
(1 ad per
person)

A HAPEX-APS 70
SOUVENIR SPECIAL

STANLEY R. HILL
11408 N.E. SKIDMORE ST.
PORTLAND, ORE. 97220

BEAUTIFUL SPECIALTY COVER SETS
recording a great historical event in a
unique philatelic manner. Matching
red and blue cachets harmonize with
and artistically balance the stamps
franking these unaddressed Fox River
rag covers.

The cover cacheted "Last Day — 49-
Star Flag" is franked with a 49-Star
Flag Stamp and cancelled at 9 AM,
July 3rd, 1960 (the last day for
officially flying Old Glory with 49 stars)
at Juneau, Alaska — the capital of the
49th state.

The cover cacheted "First Day — 50-
Star Flag" is franked with a 50-Star
Flag Stamp and cancelled at 9 AM,
July 4th, 1960 (the official first day
for the flying of Old Glory with 50
stars) at Honolulu, Hawaii

— capital of the 50th state.
The cover cacheted "First
July 4th — 50 States" is
franked with a 7-cent HAWAIIAN
Airmail stamp and
cancelled at 9 AM, July 4,
1960, at Washington, D.C.

Available in
sets of either
3 covers (as
illustrated) or
2 covers (less
the airmail
cover).

LIMITED
EDITION

CLIP THIS AD

Aloha!

A.P.S.

IF YOU DON'T SEE IT AT BOOTH #1
COME VISIT OUR SHOP

FRED L. MANDEL, JR.

Recognized Appraiser

Licensed Auctioneer

**HAWAII STAMP
&
COIN SHOP**

2122 KALAKAUA AVENUE

HONOLULU, HAWAII 96815

PHONES 923-6677 — 923-2722





Aloha



Roger
&
Raymond Weill

THE
STAMP
OF
APPROVAL



THE PHILATELIC FOUNDATION
99 PARK AVENUE
NEW YORK, N. Y. 10016
(212) 682-2540

July 15, 1970

TRUSTEES

JOHN R. BOKER, JR.
JOHN C. CHAIR
ALFRED R. CLARK
ROBT. J. GILL
HENRY M. GOODKIND
JOHN H. HALL, JR.
ANNE ROYD DALE LEFFERTS
J. W. MIDDLEBURY, JR.
MORTIMER L. REIKEN
STANLEY R. RICE
ALLEN H. SEED, JR.
LAWRENCE L. SHENFIELD
SAM HENRY TUCKER

OFFICERS

JOHN H. HALL, JR.
CHAIRMAN
ANNE ROYD DALE LEFFERTS
VICE CHAIRMAN
ALLEN H. SEED, JR.
SECRETARY
STANLEY R. RICE
TREASURER
JOHN H. HALL, JR.
ASST. TREASURER
ETHEL HARPER
ASST. TO THE CHAIRMAN
R. KELLOGG STRYKER
CLERK

Mr. Bernard D. Harner
4 E.R. Harner, Inc.
6 West 48th Street
New York, N.Y. 10036

Dear Bernard,

Thank you for your check in settlement of the sale of the sheets of Japan from the "Feplov" collection.

On behalf of the Board of Trustees, I want to tell you how much we appreciate the work of you and your staff, especially in regard to the fine bilingual auction catalogue that you produced; also the extensive publicity that you accorded this sale, which without doubt contributed to the very satisfactory result.

With best personal regards,

Sincerely yours,

JOHN H. HALL, JR.
CHAIRMAN

"We appreciate the work of your staff."
If we can produce what the Chairman of The Philatelic Foundation refers to as a "very satisfactory result," it is because we are professional auctioneers devoting our whole time and effort to the selling of stamps on an agency basis. We do not buy stamps; we sell stamps.
... and a booklet "Modern Methods of Philatelic Selling" will explain our procedures. It is gratis.

H. R. HARMER, INC.

The International Stamp Auctioneers
6 West 48th Street, New York, N. Y. 10036
(212) 757-4460