



HAWAIIAN PHILATELIC SOCIETY

ORGANIZED 1911



Affiliate
#136

P.O. Box 10115, Honolulu, HI 96816-0115 USA

WEB SITE: hpshawaii.com

EMAIL - hiphilsoc@gmail.com

December 9, 2019



Annual Christmas Party – Will be held on Monday, December 9, 2019 and all Members are invited. The party starts at 7:00PM with a buffet meal. Dinner is free for members and guests are \$5.00 per person.

Membership Dues – Annual membership dues were due October 1, 2019 (\$24.00). If your mail label of this bulletin indicates “DD Oct 19”, your dues have not yet been received. Please remit your \$24 check to PO Box 10115, Honolulu, HI 96816-0115 as soon as possible. If your label says “DD Oct 20”, your dues payment has been received.

Auction Bidding – Members are reporting bids sent via USPS are not arriving in a timely manner. USPS mail to the island tends to vary significantly & it can negatively impact your bid. If mailing your bids, be sure they are at your local post office a minimum of 7-days before the auction. Note: The Auction closes at midnight (Hawaii Time) on the Saturday preceding the Auction. If possible, send your bid sheet electronically – scan the bid sheet & email it to the address provided above or email your bids directly. For questions or assistance contact the Auctioneer – Ben @808-351-4361 or jnbgale@hawaii.rr.com directly.

WESTPEX 2020 – It’s not too early to start planning for this show on April 24-26. Watch for more information on the annual HPS “Meet & Greet” schedule, location and guest speaker.

December 2, 2019	2-4PM	HPS Executive Board Meeting	Zippy’s Kahala
December 9, 2019	7:30-9:30	HPS All Hawaiian Auction & Annual Christmas Party	St. Louis Alumni Association
December 25, 2019	All Day	Mele Kalikimaka	
January 1, 2020	All Day	Hau’oli makahiki hou	
January 6, 2020	2-4PM	HPS Executive Board Meeting	Zippy’s Kahala
January 13, 2020	7:30-9:30PM	HPS General Meeting & Auction	St. Louis Alumni Association

NOTE: St. Louis Alumni Association Club House is located at 925 Isenberg Street, Honolulu, Hawaii

Lot #	* / O	DESCRIPTIONS: (####) = VENDOR CODE; (*) = UNUSED; (O) = USED; (**) = UNUSED/NEVER HINGED; (OG) = ORIGINAL GUM; (DG) = DISTURBED GUM; POINP = POST OFFICE IN PARADISE	CATALOG YEAR	CAT OR RETAIL	UPSET
HAWAII					
1201	*	#6 Vfine; NG; HR; Pencil Mark on Back "C128"; Thin (HPS/1981)	2020	\$875.00	\$225.00
1202	O	#8 F-Vfine; Thins; Repairs UL & UR Corners; HPS Cert. #2981 (FSS/1983)	2019	\$750.00	\$150.00
1203	*	#8 Vfine; NG; Sealed Tear @Bottom; HPS Cert. #2846 (FSS/1984)	2019	\$700.00	\$150.00
1204	O	#8 F-Vfine; Thins, Creases; HPS Cert. #2800 (FSS/1985)	2019	\$750.00	\$100.00
1205	*	#8 F-Vfine; NG; Creases; HPS Cert. #2626 (FSS/1986)	2019	\$700.00	\$175.00
1206	*	#9 F-Vfine; HR; NG; Torn; Thins; Creases; HPS Cert. #2776 (FSS/1982)	2019	\$400.00	\$50.00
1207	O	#9 F-Vfine; Thins; Tear LR Edge; HPS Cert. #2918 (FSS/1983)	2019	\$400.00	\$100.00
1208	*	#9 F-Vfine; PG; Thins; HPS Cert. #2828 (FSS/1984)	2019	\$400.00	\$120.00
1209	*	#9 F-Vfine; NG; HR; HPS Cert. #2955 (FSS/1985)	2019	\$400.00	\$120.00
1210	*	#9 F-Vfine; NG; Thins; Creases; Tears; HPS Cert. #2661 (FSS/1986)	2019	\$400.00	\$80.00
1211	*	#15 F-Vfine; NG; Faults & Repairs; PSE Cert. #01323563 (FSS/1982)	2017	\$650.00	\$165.00
1212	*	#15 F-Vfine; Plate 4-B, Type VI, Pos. 6; NG; Thins; Tears; HPS Cert. #1980 (FSS/1983)	2019	\$650.00	\$125.00
1213	*	#15 Fine; Plate 4-B, Type III, Pos. 3; NG; HR; Outer Frame Lines Cut Into; HPS Cert. #2978 (FSS/1986)	2019	\$650.00	\$100.00
1214	O	#21 Plate 9-A, Type III, Pos. 7; F-Vfine; Thins; Creases; Tears; HPS Cert. #2871 (FSS/1982)	2019	\$700.00	\$140.00
1215	*	#21 Plate 9-A, Type III, Pos. 7; F-Vfine; Thins; Creases; Soiling & Smudges on Face; HPS Cert. #2964 (FSS/1985)	2019	\$900.00	\$175.00
1216	*	#23 Plate 8-A, Type III, Pos. 4; F-Vfine; Thins; Creases LL Corner; NG; HPS Cert. #2855 (FSS/1982)	2019	\$300.00	\$100.00
1217	*	#23 Plate 8-A, Type I, Pos. 2; Fine; NG; HR; Tropic Stain; Overall Soiling; HPS Cert. #2786 (FSS/1983)	2019	\$300.00	\$60.00
1218	*	#23 Type 9, Pos X; F-Vfine; PG; Thins; Scuffs; Missing Part of Top Design; HPS Cert. #2808 (FSS/1984)	2019	\$300.00	\$60.00
1219	*	#23 Plate 8-A, Type VIII, Pos. 7; F-Vfine; NG; HPS Cert. #2834 (FSS/1985)	2019	\$300.00	\$120.00
1220	*	#23 Plate 8-A, Type IV, Pos. 3; F-Vfine; NG; Thins; HPS Cert. #2837 (FSS/1986)	2019	\$300.00	\$100.00
1221	*	#24 Fine; NG; PSE Cert. #01340307 (FSS/1984)	2019	\$350.00	\$100.00
1222	*	#27 Fine; OG; Creases; Writing On Reverse; HPS Cert. #2879 (FSS/1982)	2019	\$325.00	\$125.00
1223	O	#27 Fine; Thins; Creases; Repaired/Filled Thins; HPS Cert. #2952 (FSS/1984)	2019	\$350.00	\$100.00
1224	*	#27 Fine; NG; Torn; Thins; Creases; HPS Cert. #2875 (FSS/1986)	2019	\$350.00	\$100.00
1125	*	#28 F-Vfine; NG; Thins; Creases; Nick @Bottom Edge; HPS Cert. #2960 (FSS/1983)	2019	\$325.00	\$100.00
1226	O	#28 Fine-Vfine; HR; Small in Hole Left Corner; HPS Cert. #2727 (FSS/1985)	2019	\$325.00	\$50.00
1227	O	#43a F-Vfine; Light Town Cancel (MW/1987)	2018	\$21.00	\$4.00
1228	*	#46 Vfine; OG; HR; Pencil Mark On Back (MW/1987)	2018	\$90.00	\$25.00
1229	*	#46 Fine; DG (MW/1987)	2018	\$90.00	\$15.00
1230	*	#47 F-Vfine; DG; HH (MW/1987)	2018	\$160.00	\$32.50
1231	O	#49 Fine; Postally Used, Duplex Cancel (SAI/1988)	2019	\$275.00	\$160.00
1232	*	#51 Fine; NG; Crease (MW/1987)	2018	\$35.00	\$3.00
1233	*	#51S Fine; Tear @Top; Faded (MW/1987)	2018	\$30.00	\$3.00
1234	**	#54 F-Vfine; DG (Lightly); NH (MW/1987)	2018	\$21.00	\$7.50
1235	**	#56 F-Vfine; DG (Slight); NH; 1 Short Perf (MW/1987)	2018	\$27.50	\$5.00

MEMBERSHIP

An individual Membership fee for the Hawaiian Philatelic Society is \$24.00 per year (Oct-Sep). Payable on October 1st of the current year. Membership includes a mailed hard copy, or e-copy if requested, of the monthly Bulletin/Auction and a mailed hard copy of the Society's Po'Oleka Journal (twice yearly). International membership is \$24.00/year for an e-copy of the monthly Bulletin/Auction and a mailed hard copy of the Po'Oleka Journal (twice yearly). International members requesting a hard copy of the monthly journal and a mailed copy of the Po'Oleka (twice yearly) are subject to a \$40.00 per year membership fee. Pro-rated, Life, Spouse and Junior membership fees are detailed on the Society's website hpshawaii.com. At this time, only checks are accepted for payment and must be mailed to the Society's Post Office Box 10115, Honolulu, HI 96816-0115.



1201



1202



1203



1204



1205



1206



1207



1208



1209



1210



1211



1212



1213



1214



1215



1216



1217



1218



1219



1220



1221



1222



1223



1224



1225



1226



1227



1228



1229



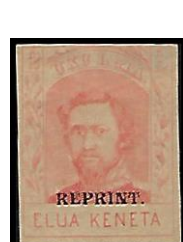
1230



1231



1232



1233



1234



1235

Lot #	* / O	DESCRIPTIONS: (####) = VENDOR CODE; (*) = UNUSED; (O) = USED; (**) = UNUSED/NEVER HINGED; (OG) = ORIGINAL GUM; (DG) = DISTURBED GUM; POINP = POST OFFICE IN PARADISE	CATALOG YEAR	CAT OR RETAIL	UPSET
1236	O	#65 F-VF; Scarce Genuine Postal Usage (Spreckelsville, Maui) (SAI/1988)	2019	\$90.00	\$47.50
1237	*	#69 Vfne; HR; Well Centered; Key Value to the Set (SAI/1988)	2019	\$350.00	\$190.00
1238	**	#80 F-Vfine; NH; OG; ABNCO Red Specimen O/P; Plate Pos. #LL32; Signed by Albert Chang (SAI/1988)	2019	\$150.00 Retail	\$90.00
1239	**	#81 Block/4 w/Left Selvage; Vfne; OG; NH (MW/1987)	2018	\$16.00	\$3.50
		HAWAII "KILLER" CANCELS			
1240	O	#35 M/H 14; 1R; Fine; Rounded Corner LL + UR (MW/1987)	2018	\$3.00	\$15.00
1241	O	#48 M/H 113; R8; F-Vfine (MW/1987)	2018	\$90.00	\$20.00
1242	O	#38 On Piece; M/H 116; R7; F-Vfine (MW/1987)	2018	\$47.50	\$9.00
1243	O	#38 On Piece M/H 117 ; R8; Fine; Short Perfs Top (MW/1987)	2018	\$47.50	\$8.00
1244	O	#43 M/H 451; Fine; Kahului Railroad "CANCELLED" Marked in Black- Typical Color is Purple; Missing Piece UL Top (MW/1987)	2018	\$1.00	\$10.00
1245	O	#49 M/H 553; Large "Maltese Cross" Arms Not Joined; Opium Revenue Cancel; F-Vfine; Crease; Short Perfs (MW/1987)	2018	\$150.00	\$45.00
1246		Lot Withdrawn Upon Request Of Vendor 11/5/19			
		HAWAII TOWN CANCELS			
1247	O	#74 HAKALAu, hawaii; POINP #281.02; R7; Purple; Vfne (SAI/1980)	2019	\$1.50	\$2.75
1248	O	#43 hamakuopOKO, maui; POINP #281.01; R6; Blue; Average (SAI/1980)	2019	N/A	\$1.75
1249	O	#76 HAMAKUOpoko, MAUI; POINP #281.011; R9; Black; SON; Vfne (SAI/1988)	2019	\$2.00	\$2.75
1250	O	#75 HANA, maui; POINP #255.01; R5; Purple; F-Vfine; Dated "Feb 4, 1898" (SAI/1979)	2019	\$0.60	\$2.75
1251	O	#75 HILO, hawaii; POINP #253.03; R9; Purple; w/Strongly Recut "W" & "A"; Fine (SAI/1979)	2019	\$0.60	\$3.25
1252	O	#74 Pair; HILO, HAWAII; POINP #271.035; R10; Black; Dated "Jun 9 -97"; F-Vfine; (SAI/1988)	2019	\$3.00	\$2.75
1253	O	#42 Pair; HILO, hawaii; POINP #281.01 (II); R8; Purple; Vfne (SAI/1980)	2019	\$4.00	\$2.75
1254	O	#75; HILO, hawaii; POINP #281.01 (II); R8; Purple; F-Vfine; Strong Strike (SAI/1979)	2019	\$0.60	\$2.50
1255	O	#44 HONOKAa, HAWAII; POINP #281.013; R7; Purple; Dated "May 10, 1890"; Average (SAI/1988)	2019	\$11.00	\$6.00
1256	O	#74 Pair; HONOLULU, H.I.; POINP #232.92; R10; Black; SON; Includes "Killer" Cancel & Partial ABNCO Imprint in Right Margin; Fine (SAI/1988)	2019	\$3.00	\$3.25
1257	O	#75 hONUApO, hawaii; POINP #282.012; R6; Purple; Sl. Tropic Stain; Average (SAI/1980)	2019	\$0.60	\$2.50
1258	O	#75 honUApO, hawaii; POINP #282.012; R6; Purple; Fine (SAI/1979)	2019	\$0.60	\$2.75
1259	O	#75 KAHULUi, maui; POINP #272.642; R6; Purple; F-Vfine (SAI/1979)	2019	\$0.60	\$2.50
1260	O	#81 KAHULUI, maui; POINP #272.642; R5; F-Vfine (SAI/1980)	2019	\$1.00	\$2.50
1261	O	#75 Pair; KAILUA, hawaii; POINP #282.011; R8; Purple; Dated "Dec 21, 1894" (SAI/1979)	2019	\$1.20	\$2.75
1262	O	#75 kALAPANa, hawaii; POINP #253.06; R2; Black; Dated: "Oct 28, 1898"; Average (SAI/1979)	2019	\$0.60	\$6.50
1263	O	#75 kALAPANA, HAWAII; POINP #253.06; R2; Purple; Dated: "Nov. 23, 1896; F-Vfine (SAI/1980)	2019	\$0.60	\$5.50
1264	O	#75 KAUNAKai, molokai; POINP #282.011; R7; Black; F-Vfine (SAI/1988)	2019	\$0.60	\$3.75
1265	O	#75 keALAKEkua, hawaii; POINP #281.02; R7; Purple; F-Vfine (SAI/1979)	2019	\$0.60	\$2.75
1266	O	#82 Vertical Pair; KEALAKEkua, hawaii; POINP #281.02; R7; Purple; Dated: "Apr. 9, 1900"; Vfne (SAI/1980)	2019	\$8.00	\$4.25
1267	O	#75 KEALIA, kauai; POINP #282.011; R9; Purple; Vfne (SAI/1980)	2019	\$0.60	\$2.50
1268	O	#82 KEAlia, kaUAI; POINP #282.011; R9; Purple; F-Vfine (SAI/1979)	2019	\$4.00	\$2.50
1269	O	#75 keKAHA, kauai; POINP #282.011; R7; Black; Vfne (SAI/1988)	2019	\$0.60	\$2.50
1270	O	#75 kekAHA, kauai; POINP #282.011; R7; Purple; F-Vfine (SAI/1980)	2019	\$0.60	\$1.75
1271	O	#81 KEOMuku, Lanai; POINP #255.01; R3; F-VF; HPS Cert.#3116(HH/1978)	2017	\$180.00 Retail	\$80.00
1272	O	#75 kIPAHulu, maui; POINP #282.011; R7; Purple; F-Vfine (SAI/1979)	2019	\$0.60	\$2.75
1273	O	U2 Cut Square; KOHALA, HAWAII; Full Strike; POINP #282.011; R8; Purple; Vfne (SAI/1988)	2019	\$4.00	\$5.50



1236



1237



1238



1239



1240



1241



1242



1243



1244



1245



1246



1247



1248



1249



1250



1251



1252



1253



1254



1255



1256



1257



1258



1259



1260



1261



1262



1263



1264



1265



1266



1267



1268



1269



1270



1271



1272



1273

Results of the November 11, 2019 Auction – Lots not listed are passed lots

1101-\$4.25; 1103-\$0.50; 1104-\$3.00; 1105-\$47.50; 1107-\$8.00; 1109-\$4.00; 1110-\$32.50; 1111-\$13.00; 1113-\$18.00; 1115-\$16.00; 1116-\$13.00; 1117-\$6.00; 1118-\$12.00; 1120-\$16.00; 1121-\$42.50; 1124-\$10.00; 1125-\$2.25; 1126-\$3.75; 1127-\$28.00; 1129-\$2.00; 1130-\$1.00; 1131-\$3.00; 1132-\$20.00; 1133-\$1.00; 1134-\$4.00; 1136-\$5.00; 1137-\$2.00; 1138-\$2.00; 1139-\$3.00; 1140-\$3.00; 1141-\$2.00; 1142-\$3.00; 1144-\$3.00; 1145-\$4.00; 1149-\$3.00; 1151-\$42.50; 1152-\$20.00; 1159-\$5.50; 1165-\$120.00; 1166-\$8.00; 1167-\$3.25; 1168-\$4.25; 1169-\$16.00; 1170-\$1.50; 1171-\$15.00; 1172-\$2.50; 1173-\$4.25; 1174-\$4.25; 1175-\$8.50; 1176-\$5.50; 1177-\$13.00; 1178-\$3.25; 1179-\$2.00; 1181-\$3.25; 1182-\$4.25; 1183-\$3.25; 1184-\$4.25; 1185-\$6.50; 1186-\$4.50

Lot #	* / O	DESCRIPTIONS: (####) = VENDOR CODE; (*) = UNUSED; (O) = USED; (**) = UNUSED/NEVER HINGED; (OG) = ORIGINAL GUM; (DG) = DISTURBED GUM; POINP = POST OFFICE IN PARADISE	CATALOG YEAR	CAT OR RETAIL	UPSET
1274	O	UX4 Cut Square; KOLOA, KAUAI; Full Strike; POINP #251.02; R8; Black; Dated: "Jun 6, 1891"; Vfine (SAI/1988)	2019	\$50.00 Entire	\$7.00
1275	O	#81 KOLOA, kauai; POINP #282.012; R8; Black; Dated: "Aug 5, 1899"; Fine (SAI/1980)	2019	\$1.00	\$2.75
1276	O	#75 laHAINA, mauui; POINP #253.9a1; R8; Purple; Dated "Mar 5, 1898"; Recut in "W"; Fine (SAI/1979)	2019	\$0.60	\$2.75
1277	O	#75 hAMOA, mauui; POINP #281.011; R7; Purple; Strong Strike for this Town; Fine (SAI/1979)	2019	\$0.60	\$3.25
1278	O	#75 lauPAHOEHOE, hawaii; POINP #2801.01; R7; Purple; VFine (SAI/1988)	2019	\$0.60	\$2.75
1279	O	#75 laupahOEHOE, hawaii; POINP #281.01; R7; Purple; Fine (SAI/1980)	2019	\$0.60	\$2.50
1280	O	#81 iAUPAhoehoe, HAWaui; POINP #282.04; R2; Purple; F-VF (SAI/1980)	2019	\$1.00	\$2.75
1281	O	#75 LIHUE, kauai; POINP #253.01 (I); R7; Purple; F-Vfine (SAI/1980)	2019	\$0.60	\$2.75
1282	O	#76 LIHUE, kauai; poinp #253.01; R7; Black; Dated: "Apr 24, 1897"; Fine (SAI/1979)	2019	\$7.00	\$2.50
1283	O	#44 LIHUE, kauai; POINP #253.41; R5; Blue; Pin Hole; Thin; Just Fine; Faults do not Detract from the Cancel (SAI/1988)	2019	\$11.00	\$3.25
1284	O	#75 mahukONA, hawaii; POINP #282.016; R6; Purple; Fine; Repaired (SAI/1979)	2019	\$0.60	\$2.50
1285	O	#75 mANA, kauai; POINP #282.012; R3; Purple; Vfine (SAI/1980)	2019	\$0.60	\$3.75
1286	O	#80 VOLCANO house, hawaii; POINP #281.02; R5; Purple; Fine (SAI/1979)	2019	\$1.50	\$2.75
1287	O	#75 waIALUA, oahu; POINP #282.013; R5; Average (SAI/1980)	2019	\$0.60	\$3.00
HAWAII ENVELOPES					
1288	**	U6 Blue Lined; Flap Unsealed; Vfine; NH (HPS/1981)	2020	\$425.00	\$210.00
1289	**	U7 Blue Lined; Flap Unsealed; Vfine; NH (HPS/1981)	2020	\$425.00	\$210.00
1290	*	U9 Blue Lined; Repair In Flap; Fine (HPS/1981)	2020	\$525.00	\$175.00
1291	**	U11 NH; OG; Flap Unsealed; F-Vfine (HPS/1981)	2020	\$6.00	\$1.50
AND WE ARE PAU					



1274



1275



1276



1277



1278



1279



1280



1281



1282



1283



1284



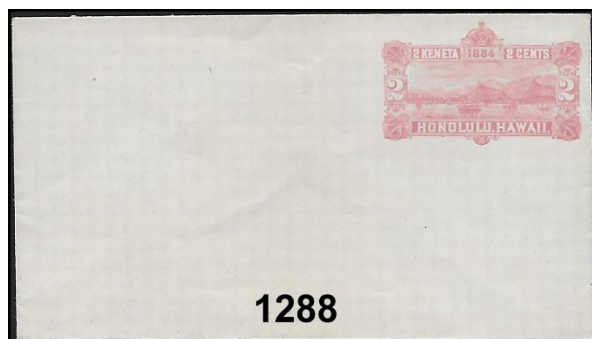
1285



1286



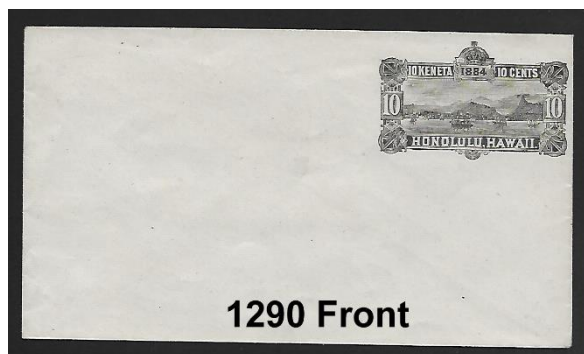
1287



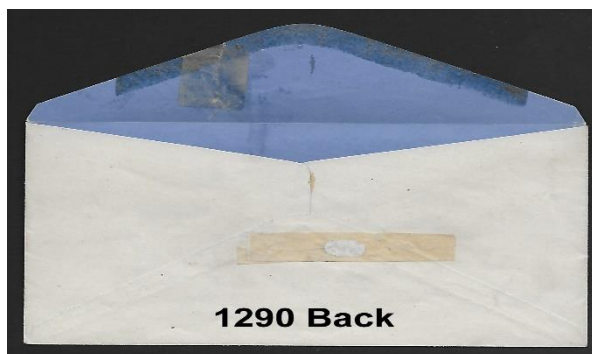
1288



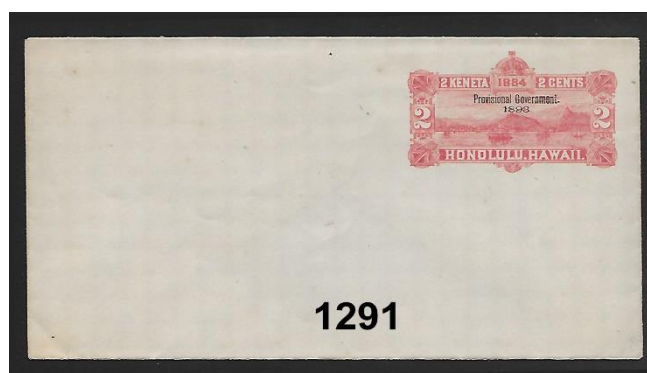
1289



1290 Front



1290 Back



1291



WE SELL

Hawaii!!

OUR WEBSITE OF HAWAII ONLY:

www.vogtstamps.com

Stamps, Covers, Postcards, Flight Covers, Documents, Coins, Currency, Paper Ephemera, Autographs, Memorabilia, Photographs, Kahului Railroad. **In short, nearly everything!**

**FROM RARITIES TO COMMON
GEMS TO NOT
(MANY NOT ON THE MARKET
FOR HALF A CENTURY!)**



Rare 66C Block



Honolulu Straight Line Cancel

VOGT STAMPS – HAWAII

650-344-3401 phone
650-401-5530 fax
vogtstamps@aol.com

HAWAII

**STAMPS, COVERS, PROOFS, ESSAYS
BUYING & SELLING**



**Hawaii #78, Gutter Specimen Block
12 Cent Blue, 1894, World Class Rarity**

PACIFIC MIDWEST CO.

P.O. Box 730818

San Jose, CA 95173

408-532-7100

EMAIL: GARYUCB@AOL.COM

WE ARE A WORLD CLASS HAWAIIAN DEALER

ASDA APS HAWAIIAN PHILATELIC SOCIETY CHINA STAMP SOCIETY

Earlier this year a request was received from the National Park Service (NPS) and the Sisters of St. Francis (Sisters), both located in Kalaupapa, for assistance from the Hawaiian Philatelic Society. In the 1950's the residents of the colony formed a stamp club and thus started the accumulation in the pictures below. My wife, Junior, and I responded to the request and arrived in Kalaupapa on October 21st and were met by our sponsors, Julia Aleszczyk (NPS Curator) and Sister Alicia. No one visits Kalaupapa without a sponsor and those visitors are heavily regulated. It was indeed an honor to visit Kalaupapa.

Once settled in, we got to see firsthand the enormous accumulation of stamps. Briefly, it was quickly recognized the Kalaupapa Stamp Club was more of a social club than a philatelic endeavor. Residents would gather in a sharing environment and "clip" stamps from correspondence received from all over the world. The major portion was from the 1950's, when it appears the club was formed, with very few stamps prior to that date. Sadly, there was not a "Missionary Stamp" hidden in the accumulation. The stamps did not suffer from the usual tropical stain, termite or cockroach damage—go figure. The accumulation was divided between cut squares and stamps that had been very nicely soaked off their paper.

The greatest find for me was the Certificate of Appreciation (see below) presented to the Club in 1951 from the HPS. No record was found describing the contribution and the original remains with the NPS.

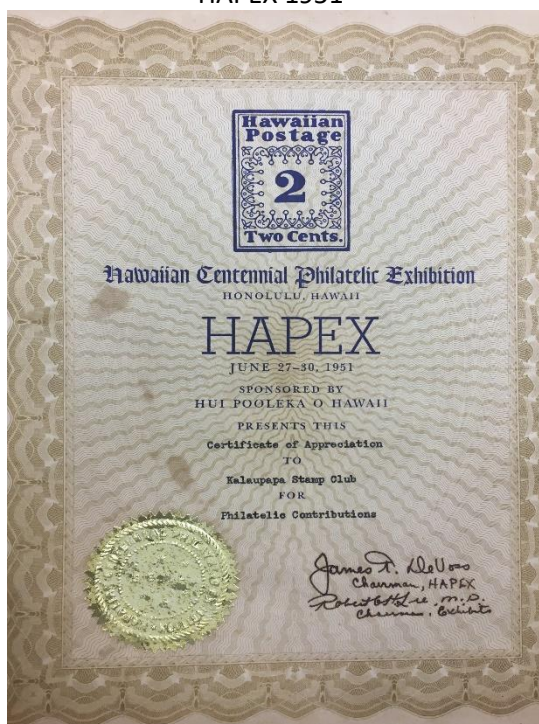
With first-hand experience and a better understanding of the need it was decided a second visit would be needed. A "Team HPS"; consisting of Wayne Yakuma, Glenn Yokohama, Jerry Coiner, Ben Gale and Joe Bonkowski will be returning December 2 – December 5, 2019. There is no specific plan for what will become of the accumulation. What is known is it will be preserved in its entirety. To that end, the mission will be to sort the accumulation by country, preserving representative specimens for display in albums. With the remaining accumulation preserved in a clear container displaying the enormous amount of correspondence and the many, many countries the residents corresponded with during that decade plus.

An update and a more detailed article will be in a future copy of the Po'Oleka in 2020.

The "Accumulation"



HAPEX 1951



Child Labor



Hawaiian Philatelic Society
P O Box 10115
Honolulu, Hawaii 96816-0115

I wish to submit the following bids for the Hawaiian Philatelic Society auction

held on: _____

Signature: _____

Print Name: _____ Date: _____

Address: _____
Telephone: _____

city: state: zip:

[illegible]

Bidding Increments

0.25	to 5.00	by 0.25	25.00	to 50.00	by 2.50
5.00	to 10.00	by 0.50	50.00	to 100.00	by 5.00
10.00	to 25.00	by 1.00	100.00	and up	by 10.00

Must be a member to bid in the Auction.

HAWAIIAN PHILATELIC SOCIETY

P.O. Box 10115
Honolulu, Hawaii 96816-0115

ADDRESS SERVICE REQUESTED

