



# HAWAIIAN PHILATELIC SOCIETY

ORGANIZED 1911



Affiliate  
#136

P.O. Box 10115, Honolulu, Hawaii, 96816-0115 USA

EMAIL - [hphilsoc@gmail.com](mailto:hphilsoc@gmail.com)

JANUARY 2019

President: Wayne Yakuma; First Vice-President: Glenn Yokoyama; Second Vice-President: Kay Kimura; Treasurer: Jerry C. Coiner; Secretary: Vacant; Auctioneer: Ben Gale; APS Representative: Phillip C. Mendel; Po'Oleka O Hawaii Editor: Gregory Chang; Membership Chair: Gannon Sugimura

## IMPORTANT INFORMATION!

- **MEMBERSHIP FEES** – The deadline has come and gone, but we still want you to continue the journey. Send your \$24.00 check today to the P.O. Box listed above.
- **EXPERTIZING FEES** – Effective January 1, 2019 the fee will increase to \$24.00 for members and \$30.00 for non-members.
- **HPS WEBSITE** – It is up and running! Yes, it continues to be a work in progress; however, that is the true litmus test---have the users test drive the model and provide feedback. Check it out at [HpsHawaii.com](http://HpsHawaii.com).
- **PRICES REALIZED** – Due to Staff shortages the auction results for December and January will be published in the February 2019 Bulletin.
- **MEMBERSHIP CARDS** – Staff continues to mail out the cards. The first priority is the Life Members and then the Annual Members as payment is received.
- **WESTPEX 2019** – April 26-28 at the San Francisco Airport Marriott. Details later on the HPS "Meet & Greet".

**HPS members receive a 20% discount and time payments are available.**



## WE SELL

# Hawaii!!

**OUR WEBSITE OF HAWAII ONLY:**  
**[www.vogtstamps.com](http://www.vogtstamps.com)**

Stamps, Covers, Postcards, Flight Covers, Documents, Coins, Currency, Paper Ephemera, Autographs, Memorabilia, Photographs, Kahului Railroad. **In short, nearly everything!**

**FROM RARITIES TO COMMON  
GEMS TO NOT  
(MANY NOT ON THE MARKET  
FOR HALF A CENTURY!)**



Rare 66C Block



Honolulu Straight Line Cancel

## VOGT STAMPS – HAWAII

650-344-3401 phone  
650-401-5530 fax  
[vogtstamps@aol.com](mailto:vogtstamps@aol.com)

LOT #	* / O	DESCRIPTIONS: (####) = VENDOR CODE; (*) = UNUSED; (O) = USED; (**) = UNUSED/NEVER HINGED; (OG) = ORIGINAL GUM; (DG) = DISTURBED GUM	CAT YEAR	CAT or RETAIL	UPSET
<b>UNITED STATES OF AMERICA</b>					
0101	O	#73 Fine (PCM/1906)	2016	\$65.00	\$15.00
0102	O	#73 Fine (PCM/1906)	2017	\$65.00	\$20.00
0103	O	#73 Fine (PCM/1906)	2016	\$65.00	\$15.00
0104	O	#73 Vfine; 4 Clear Margins; Neat Boston cds (PL/1905)	2017	\$65.00	\$30.00
0105	**	#323 Vfine; OG; NH (PL/1905)	2017	\$65.00	\$30.00
0106	*	#470 Vfine; OG; LH (PL/1905)	2017	\$55.00	\$25.00
0107	*	#516 Xfine; OG; LH (PL/1905)	2017	\$30.00	\$20.00
0108	O	#554+#562+#801 on Cover; Fine (PCM/1906)	2016	\$3.75	\$5.00
0109	O	#557+#566 (Pair)+#560+C20 Registered; On-Cover; F-Vfine (PCM/1906)	2016	\$4.10	\$10.00
0110	O	#725 First Day Cover; Vfine; w/Cachet (BAH/1903)	2018	\$3.25+	\$2.00
0111	O	#799 First Day Cover; Vfine (DLC/1901)	2018	\$11.00	\$2.00
0112	O	#804 + C32 W/Plate Block #; On Cover; Vfine (DLC/1902)	2018	\$0.40	\$1.00
0113	O	#854 (4) FDC; Vfine Each W/Different Cachets (BAH/1903)	2018	\$70.00	\$5.00
0114	O	#905 On Cover; F-Vfine; 1942 WWII Patriotic Cachet (BAH/1903)	2018	\$10.00	\$3.00
0115	O	#1012 PBlk/4 Vfine; First Flight Cover; Route AM 33 Kamuela (DLC/1901)	N/A	\$10.00	\$2.00
0116	**	#1053 F-Vfine; OG; NH (BAH/1903)	2018	\$50.00	\$6.00
0117	O	#1732+#2080 on Cover Vfine; Cachet "Endeavor Visits Hawaii 1999" (DLC/1901)	2018	\$0.40	\$1.00
0118	O	#1732+#1733+C55 on Cover; Vfine; Cachet "Cpt Cook's Endeavor" (DLC/1901)	2018	N/A	\$1.00
0119	O	#1733+#2080 on Cover; Vfine; Cachet "Endeavor's Journey in Hawaii" (DLC/1901)	2018	N/A	\$1.00

# HAWAII

**STAMPS, COVERS, PROOFS, ESSAYS  
BUYING & SELLING**



Hawaii #78, Gutter Specimen Block  
12 Cent Blue, 1894, World Class Rarity

**PACIFIC MIDWEST CO.**

**P.O. Box 730818**

**San Jose, CA 95173**

**408-532-7100**

**EMAIL: GARYUCB@AOL.COM**

**WE ARE A WORLD CLASS HAWAIIAN DEALER**

**ASDA APS HAWAIIAN PHILATELIC SOCIETY CHINA STAMP SOCIETY**





0101



0102



0103



0104



0105



0106



0107



0116



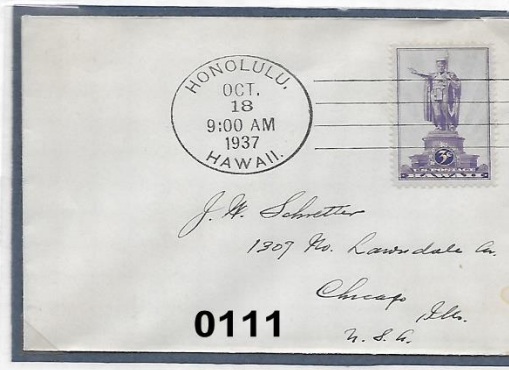
0108



0109



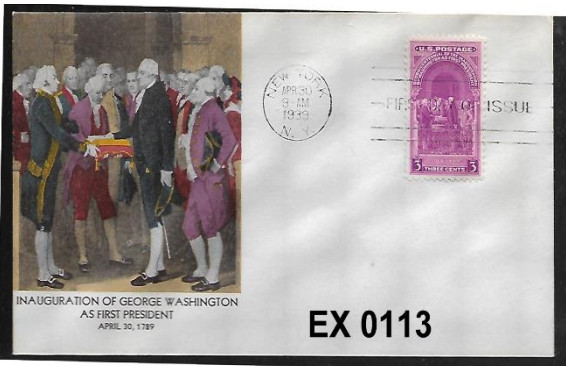
0110



0111



0112



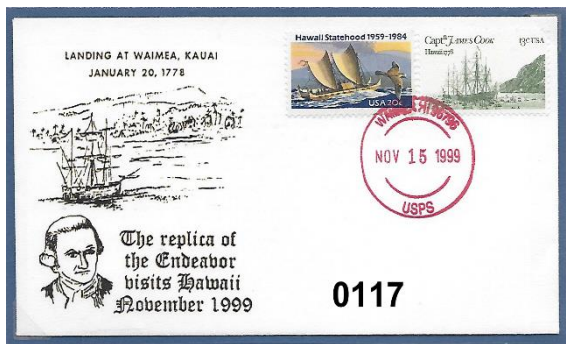
EX 0113



0114



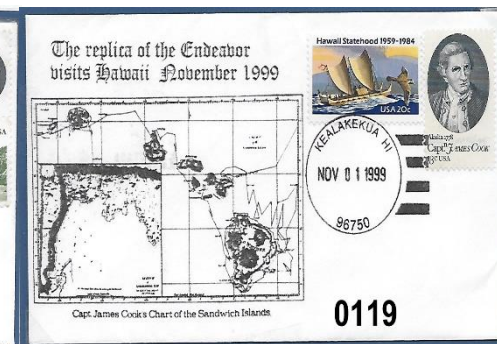
0115



0117



0118



0119

LOT #	* / O	DESCRIPTIONS: (####) = VENDOR CODE; (*) = UNUSED; (O) = USED; (**) = UNUSED/NEVER HINGED; (OG) = ORIGINAL GUM; (DG) = DISTURBED GUM	CAT YEAR	CAT or RETAIL	UPSET
0120	O	#2080 on FDC; Vfine; "Hawaii Statehood 25th Anniversary" (DLC/1902)	2018	\$5.00	\$1.00
0121	**	C4 Vfine; OG; NH; 4-Solid Margins (PL/1905)	2018	\$35.00	\$20.00
0122	**	C5 Pair W/Selva; Vfine; OG; NH Well-Centered (PL/1905)	2017	\$260.00	\$80.00
0123	O	C7 on Cover; Fine; 1st Airmail from Canton Island-New Caledonia (PCM/1906)	2016	\$2.50	\$15.00
0124	O	C7 on Cover; Fine; 1st Flight FAM 19 Cachet (PCM/1906)	2016	\$0.35	\$5.00
0125	O	C7 on Cover; Fine; 1st Flight Cachet; Canton-New Caledonia-San Francisco (PCM/1906)	2016	\$0.35	\$10.00
0126	O	C7 on Cover; Fine; 1st Flight FAM 17; Baltimore-Bermuda (PCM/1906)	2016	\$0.35	\$5.00
0127	O	C7+C21 on Cover; Fine; 1st Flight Canton-San Francisco (PCM/1906)	2017	\$4.25	\$10.00
0128	O	C10 On Cover; Fine; 1st Air Mail Route Indianapolis, Ind (1927); 1927 Christmas Seal on Back (Single) (PCM/1906)	2016	\$2.50	\$8.00
0129	O	C12+ U523 Cover; Fine; 1st Flight Route AM33P.O.D.; Cachet San Diego (PCM/1906)	2016	\$1.30	\$3.00
0130	**	C14 Vfine; OG; NH; Well-Centered (PL/1905)	2017	\$625.00	\$250.00
0131	O	C19 On Cover; Fine; 1st Flight US Airmail; Lihue, Kauai, T.H. (PCM/1906)	2016	\$0.50	\$8.00
0132	O	C20 on Cover; Fine; 1st Flight FAM 14; Honolulu-Guam; 2-Way Travel (PCM/1906)	2016	\$1.40	\$15.00
0133	O	C24 on Cover; Fine; 1st Flight FAM 19; SF to Canton Island (PCM/1906)	2016	\$1.50	\$20.00
0134	**	C46 PBlk/4 Vfine; OG; NH (DLC/1902)	2018	\$19.00	\$4.50
0135	O	C55 Blk/4 on Cover (2) FDC; F-Vfine; Hawaii Statehood Cachets (DLC/1902)	2018	\$4.00	\$1.00
<b>U.S. POSTAGE DUE - NEWSPAPER/PERIODICALS - REVENUE</b>					
0136	**	J87 Vfine; OG; NH; Very Well-Centered (PL/1905)	2017	\$52.50	\$30.00

### CALENDAR OF FUTURE EVENTS

January 7, 2019	2:00-4:00PM	HPS Executive Board Meeting	Zippy's Kahala
January 14, 2019	7:30-9:30PM	HPS General Meeting/Auction	St. Louis Alumni Association
February 4, 2019	2:00 – 4:00PM	HPS Executive Board Meeting	Zippy's Kahala
February 11, 2019	7:30 – 9:30PM	HPS General Meeting/Auction	St. Louis Alumni Association
March 4, 2019	2:00 – 4:00PM	HPS Executive Board Meeting	Zippy's Kahala
March 11, 2019	7:30 - 9:30PM	HPS General Meeting/Auction	St. Louis Alumni Association
April 26-28, 2019	VARIES	WESTPEX-HPS Annual "Meet & Greet"	SF Airport Marriott, Burlingame





0121



0136



0122



0130



0123



0124



0125



0126



0127



0128



0129



0131



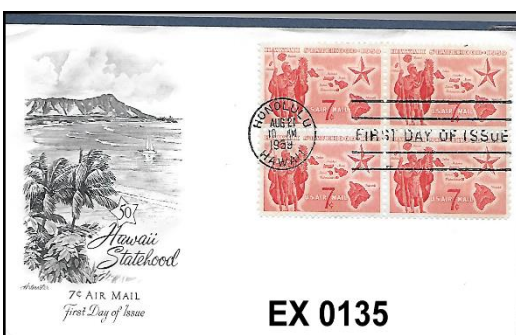
0132



0133



0134



EX 0135



LOT #	* / O	DESCRIPTIONS: (####) = VENDOR CODE; (*) = UNUSED; (O) = USED; (**) = UNUSED/NEVER HINGED; (OG) = ORIGINAL GUM; (DG) = DISTURBED GUM	CAT YEAR	CAT or RETAIL	UPSET
0137	*	PR123+PR125 F-Vfine; #123=NG; #125 = DG (PL/1905)	2017	\$37.50	\$20.00
0138	O	R51 Average (SAI/1904)	2018	\$60.00	\$15.00
0139	O	R76 Fine; Pulled Perf; cds Feb 24, 1865 (SAI/1904)	2018	\$55.00	\$6.50
0140	O	R77 Fine; Circular Cut Cancel (SAI/1904)	2018	\$85.00	\$18.00
0141	O	R79 Vfine; Extra Perfs; cds 19 Aug 1864 (SAI/1904)	2018	\$180.00	\$20.00
0142	O	R86c Average; Light Wrinkle (SAI/1904)	2018	\$55.00	\$15.00
0143	O	R98 Fine; Tear Left Margin (SAI/1904)	2018	\$125.00	\$18.00
0144	O	R100 Fine; Very Light Crease; Hand Stamps (SAI/1904)	2018	\$250.00	\$80.00
0145	O	R108 Average; Light Cancel (SAI/1904)	2018	\$90.00	\$23.00
0146	O	R116 Average; Torn and Pinhole (SAI/1904)	2018	\$250.00	\$24.00
0147	O	R117 Fine; Thin (SAI/1904)	2018	\$100.00	\$22.00
0148	O	R124 Fine; Uncut; Thin (SAI/1904)	2018	\$60.00	\$12.00
0149	O	R140 Fine; Thin; Light Cut Cancel (SAI/1904)	2018	\$15.00	\$3.25
0150	O	R148 Vfine; Tiny Thin at Bottom (SAI/1904)	2018	\$50.00	\$12.00
0151	O	R401 F-Vfine; "Expertly" Repaired Punch Cancel (SAI/1904)	2018	\$11.50	\$3.00
0152	O	R504 Fine; Thins (SAI/1904)	2018	\$18.00	\$2.25
		<b>CONFEDERATE STATES OF AMERICA</b>			
<b>0153</b>	O	#7 Vfine; Neat Town Cancel (PL/1905)	2017	\$22.00	\$15.00
		<b>HAWAII</b>			
0154	O	#9 F-Vfine; NG; HR; HPS Cert #2955 (FSS/1907)	2017	\$400.00	\$150.00
0155	O	#27 F-Vfine; Creases; Thins + Repaired/Filled Thins; HPS Cert #2952 (FSS/1907)	2017	\$350.00	\$125.00
0156	*	#33 F-Vfine; NG (DLC/1901)	2019	\$45.00	\$3.00
0157	*	#34 F-Vfine; NG (BAH/1903)	2018	\$100.00	\$20.00
0158	*	#45 Vfine; NG (BAH/1903)	2018	\$45.00	\$8.00
0159	*	#46 F-Vfine; PG (BAH/1903)	2018	\$90.00	\$20.00
0160	O	#47 Vfine (BAH/1903)	2018	\$65.00	\$10.00
0161	*	#51S F-Vfine; NG; LH (BAH/1903)	2018	\$35.00	\$7.00
0162	O	#53 Fine; Overprint Divided Vertically (DLC/1901)	2018	\$13.00	\$35.00
0163	** / *	#56 Blk/6 w/Full Imprint; Vfine; 5=NH; 1=LH (DLC/1901)	2018	\$150.00	\$80.00
0164	*	#58 F-Vfine; OG; LH; Overprint Divided Horizontally (DLC/1901)	2018	\$15.00	\$35.00
0165	O	#60 Fine; Short Perfs (DLC/1902)	2019	\$25.00	\$2.00
0166	O	#60 F-Vfine (BAH/1903)	2018	\$25.00	\$7.00
0167	*	#60 Fine; OG; LH; Overprint Divided Vertically (DLC/1902)	2019	\$17.50	\$45.00
0168	O	#61 F-Vfine (DLC/1902)	2019	\$20.00	\$2.00
0169	**	#64 Blk/4 F-Vfine; OG; NH (DLC/1901)	2018	\$280.00	\$100.00
0170	**	#65 F-Vfine; OG; NH; Overprint Divided Vertically (DLC/1902)	2019	\$200.00	\$130.00

**Keith James Steiner** passed on Monday, November 5, 2018. Born in Honolulu, Keith was a third generation Hawaii resident. He was a dedicated stamp collector. His collection of Hawaiian Numeral was regarded as one of the most complete of its kind and awarded gold medals when exhibited. He was an avid collector of Hawaiian Postcards, particularly those published by his grandfather, James Steiner. In 2001 he wrote and published "Hawaii's Territorial Days Viewed From Vintage Postcards by Island Curios".





0137



0138



0139



0140



0141



0142



0143



0144



0146



0147



0148



0149



0150



0145



0151



0152



0153



0154



0155



0156



0157



0158



0159



0163



0160



0161



0162



0164



0165



0166



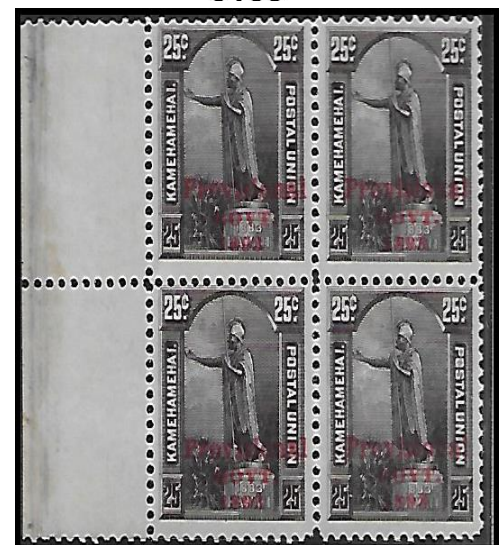
0167



0168



0170



0169



LOT #	* / O	DESCRIPTIONS: (####) = VENDOR CODE; (*) = UNUSED; (O) = USED; (**) = UNUSED/NEVER HINGED; (OG) = ORIGINAL GUM; (DG) = DISTURBED GUM	CAT YEAR	CAT or RETAIL	UPSET
0171	**	#66 (3 Singles) Fine; OG; 1 w/Selvage; NH (BAH/1903)	2018	\$11.25	\$4.00
0172	**	#68 Fine; OG; NH; w/Selvage Right + Bottom (DLC/1902)	2019	\$24.00	\$5.00
0173	O	#70 Fine; Short Perfs (DLC/1902)	2019	\$35.00	\$3.00
0174	*	#71 F-Vfine; OG; HR (DLC/1901)	2019	\$40.00	\$4.00
0175	*	#72+#72b (Pair) Fine; OG; HH (DLC/1902)	2018	\$590.00	\$200.00
0176	O	#74+75+81 (2) F-Vfine; 4 Different Town Cancels (BAH/1903)	2018	\$4.10	\$2.00
0177	O	#76 (3 Singles) F-Vfine; 3 Different Town Cancels (BAH/1903)	2018	\$6.00	\$3.00
0178	*	#79 Fine; NG; HH (BAH/1903)	2018	\$22.50	\$3.00
0179	*	#81s w/Hole Punch; F-Vfine; NG; HPS Cert #2947 (FSS/1907)	2017	\$300.00	\$225.00
		<b>HAWAII COVERS &amp; POST CARDS</b>			
0180	O	U11+#53+#55+#64 On Cover; F-Vfine; cds Sprecklesville Jun 1900 (DLC/1901)	2018	\$261.00	\$150.00
0181	O	UX9 Xfine; Superb Honolulu, Hilo, SF and NY Cancels (PL/1905)	2017	\$80.00	\$50.00
		<b>HAWAII TOWN CANCELS &amp; "KILLER" CANCELS</b>			
0182	O	#76 ooKALA, hawaii; MH #259.023; R3; Fine (DLC/1902)	2019	\$2.00	\$3.50
0183	O	#65 Spreckelsville, Maui; MH #282.011; R8; F-Vfine (DLC/1902)	2019	\$90.00	\$16.00
0184	O	#43 F.G. Ring 3-25 (negative X); R-1RRRR; F-Vfine (DLC/1901)	2018	\$1.00	\$25.00
		<b>HAWAIIANA</b>			
0185	** / O	Coco Palms Resort Post Cards; Vfine; (1) Used; (1) Unused; NH (DLC/1902)	N/A	N/A	\$2.00
0186	*	8-Page "Whalemens Shipping List"; Published 8/30/1853; New Bedford, MA; Page Edges Brittle; Highly Readable; Rare; 3 Sandwich Is. Ads, Page 204; More Than 150 References to Whaling Ships at Ports In The Sandwich Is. (BAH/1903)	N/A	\$50.00	\$20.00
		<b>CAPE OF GOOD HOPE</b>			
0187	O	#24, #27, #34, #43, #49, #50, #52, #58 Fine (DLC/1901)	2017	\$10.50	\$2.00
		<b>CUBA</b>			
0188	O	#221 - #226 Fine (PL/1905)	2017	\$11.70	\$5.00
		<b>DUTCH WEST INDIES</b>			
0189	*	#46 F-Vfine; OG; LH (PL/1905)	2017	\$30.00	\$10.00
		<b>PHILIPPINES</b>			
0190	*	#218 Xfine; OG; LH (PL/1905)	2017	\$40.00	\$30.00
		<b>SHANGHAI</b>			
0191	*	K5 F-Vfine; OG; LH (PL/1905)	2017	\$65.00	\$25.00
		<b>SWITZERLAND</b>			
0192	O	#48 F-Vfine (DLC/1902)	2017	\$180.00	\$20.00
0193	O	C4, C22, C32, C37, C38 F-Vfine (DLC/1901)	2017	\$8.00	\$1.00

And we are pau!

*Mele Kalikimaka and Hau'oli Makahiki Hou*





0171



0172



0173



0174



0175



0177



0176



0178



0179



0180



0181



0182



0183



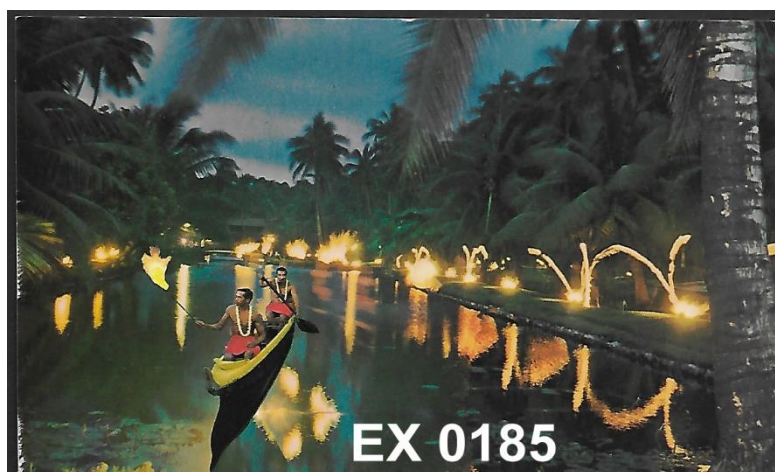
0184



0187



0188



EX 0185



0189



0190



0191



0192



0193



I wish to submit the following bids for the Hawaiian Philatelic Society auction

held on:

Signature: \_\_\_\_\_

Print Name: \_\_\_\_\_ Date: \_\_\_\_\_

Address: \_\_\_\_\_ Telephone: \_\_\_\_\_

City: \_\_\_\_\_ State: \_\_\_\_\_ Zip: \_\_\_\_\_

[illegible]

Bidding Increments			
0.25 to 5.00	by 0.25	25.00 to 50.00	by 2.50
5.00 to 10.00	by 0.50	50.00 to 100.00	by 5.00
10.00 to 25.00	by 1.00	100.00 and up	by 10.00

Must be a member to bid in the Auction

P.O. Box 10115  
Honolulu, Hawaii 96816-0115

ADDRESS SERVICE REQUESTED

