



HAWAIIAN PHILATELIC SOCIETY

ORGANIZED 1911



Affiliate
#136

P.O. Box 10115, Honolulu, Hawaii, 96816-0115 USA

EMAIL - hphilsoc@gmail.com

July 2019

E KOMO MAI to our newest member----Dave Becker, Ridgefield, WA

CALENDAR OF FUTURE EVENTS

July 1, 2019	2 – 4PM	HPS Executive Board Meeting	Zippy's Kahala
July 8, 2019	7:30-9:30PM	HPS General Meeting/Auction	St. Louis Alumni Association
July 14, 2019	10:30-5:30PM	Hawaii All Collectors Show 2019	Neal Blaisdell Exhibition Hall
August 5, 2019	2 – 4 PM	HPS Executive Board Meeting	Zippy's Kahala
August 12, 2019	7:30 – 9:30PM	HPS General Meeting/Auction	St. Louis Alumni Association

NOTE: St. Louis Alumni Association Club House is located at 925 Isenberg Street, Honolulu, Hawaii

-----There are no auction results for June 2019 as that auction was cancelled-----

USS MISSOURI COMMEMORATIVE STAMP

The Society has created a First Day Cover (see example below) commemorating the commissioning of the USS Missouri (BB-63) on June 11, 1944. "Mighty Mo" is now moored next the USS Arizona in Pearl Harbor. The cover is balanced with a cache of the ship's Coat of Arms and a USS Missouri First Class Stamp. Copies are available for \$5USD for US addresses and \$6USD for International. Printing will be limited to 300; to get your copy mail a check to HPS PO Box.



MEMBERSHIP

Individual Membership fee for the Hawaiian Philatelic Society is \$24.00 per year (Oct-Sep). Payable on October 1st of the current year. Pro-rated, Life, Spouse and Junior membership fees are detailed on the Society's website hpshawaii.com. At this time, only checks are accepted for payment and must be mailed to the Society's Post Office Box 10115, Honolulu, HI 96816-0115.

LOT #	* / O	DESCRIPTIONS: (####) = VENDOR CODE; (*) = UNUSED; (O) = USED; (**) = UNUSED/NEVER HINGED; (OG) = ORIGINAL GUM; (DG) = DISTURBED GUM	CAT YEAR	CAT or RETAIL	UPSET
UNITES STATES OF AMERICA					
0701	**	#65 Fine; NH; Very Fresh Stamp; Slight Offset on Back (PRL/1942)	2017	\$125.00	\$75.00
0702	*	#76 Pair Average; OG; LH; Gum Crease; PSE Cert #46488, Originally Blk/4 (PRL/1942)	2017	\$2,900.00	\$500.00
0703	** / O	#231 Fine (2); 1=Unused, NH; 1=Used, NG; Both "Broken Hat Varieties" (BAH/1939)	2019	\$165.50	\$20.00
0704	*	#272 Vfine; LH; OG (PRL/1942)	2017	\$70.00	\$35.00
0705	*	#288 Vfine; LH; OG; Left Side Reperfed (PRL/1942)	2017	\$100.00	\$25.00
0706	**	#294 Xfine; OG (BAH/1939)	2019	\$40.00	\$10.00
0707	*	#302 Vfine; LH; OG (PRL/1942)	2017	\$50.00	\$25.00
0708	*	#504 + 507 + 509 Vfine; LH; OG (PRL/1942)	2017	\$46.00	\$30.00
0709	**	#750 Vfine; NH; NG as Issued (BAH/1939)	2019	\$30.00	\$5.00
0710	O	#793 Blk/4 on FDC Vfine (BAH/1939)	2019	\$8.50	\$2.00
BACK OF THE BOOK					
0711	O	C26 on Cover Fine; Closed Tear (DLC/1938)	N/A	\$0.20	\$1.00
0712	O	C84 Single on Cover, Delta Air Inaugural Service + Pair on First Day of Issue; Vfine; 2 Covers Total (DLC/1938)	2019	\$2.00	\$1.00
0713	O	E16 Average; Small Tear Left Side; 'KAHULUI, HAWAII" Date Stamp "May 19, 12:30PM, 1949" (DLC/1938)	2017	\$0.25	\$1.00
0714	*	J41 F-Vfine; LH; OG; Double Line Watermark (PRL/1942)	2017	\$110.00	\$40.00
0715	*	J22 Vfine; LH; OG (PRL/1942)	2017	\$30.00	\$20.00
0716	O	Q10 Vfine; Neat NY Cancel (PRL/1942)	2017	\$50.00	\$25.00
0717	O	R51 Average (SAI/1941)	2018	\$60.00	\$15.00
0718	O	R77 Fine; Circular Cut Cancel (SAI/1941)	2018	\$85.00	\$18.00
0719	O	R79 Vfine; Extra Perfs; Cancel "19 AUG 1864" (SAI/1941)	2018	\$180.00	\$20.00
0720	O	R86c Average; Light Wrinkle (SAI/1941)	2018	\$55.00	\$15.00
0721	O	R98 Fine; Tear Left Margin (SAI/1941)	2018	\$125.00	\$18.00
0722	**	RW55 Xfine; w/Plate Number; NH; OG (BAH/1939)	2019	\$17.50	\$5.00
HAWAII					
0723	*	#6 F-VF; HR; Creases; Cut Left Top Corner; HPS Cert #3060 (FSS/1945)	2019	\$875.00	\$220.00
0724	O	#8 F-Vfine; HR; Thins; Repaired Upper Left Corner + Upper Right Edge; HPS Cert #3078 (FSS/1945)	2019	\$750.00	\$175.00
0725	*	#9 F-Vfine; Regummed; Thins; Tropical Stains; Repaired Bottom Edge; Oil Infused Paper; HPS Cert #3074 (FSS/1945)	2019	\$400.00	\$100.00
0726	O	# Stains; Tear Right + Bottom; HPS Cert #3061 9 F-VF; Tropic (FSS/1944)	2019	\$400.00	\$100.00
0727	*	#10 Vfine; LH; OG; From Gold Winning Exhibit (DLC/1938)	2019	\$27.50	\$20.00
0728	*	#10 F-Vfine; HR; OG; From Gold Winning Exhibit (DLC/1938)	2019	\$27.50	\$20.00
0729	**	#10 Vfine; NH; OG; From Gold Winning Exhibit (DLC/1938)	2019	\$27.50	\$20.00
0730	**	#10 Blk/4 Vfine; NH; OG; From Gold Winning Exhibit (DLC/1938)	2019	\$130.00	\$90.00

HELP!! Your society needs lots for future auctions. Please look for material you are willing to put in the auction. Please send any offerings to the HPS PO Box attn: Auctioneer. Mahalo!



0701



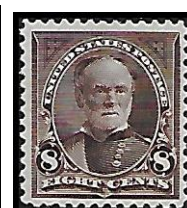
0702



0703



0704



0705



0706



0707



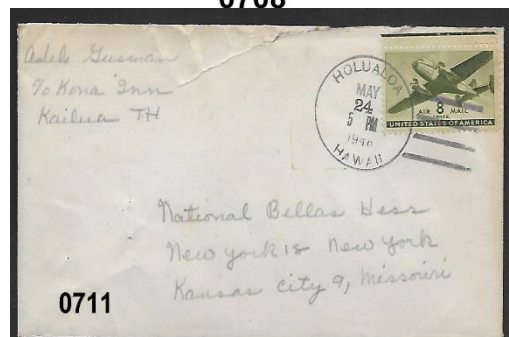
0708



0711



0710



0711



0713



0714



0715



0716



0712



0717



0718



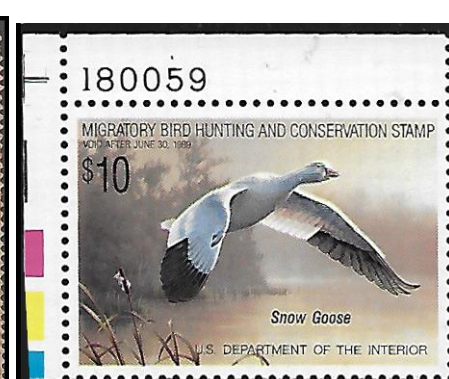
0719



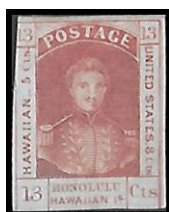
0720



0721



0722



0723



0724



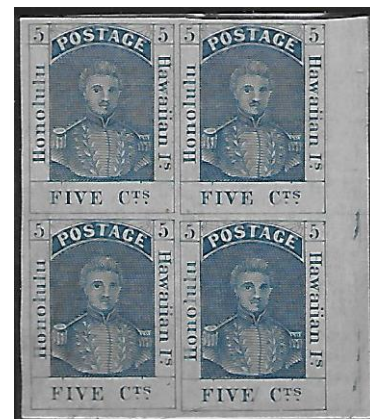
0727



0728



0729



0730

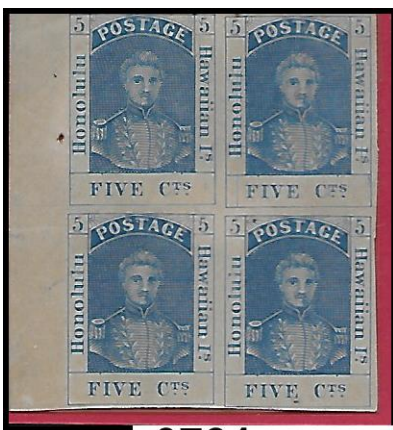


0725



0726

LOT #	* / O	DESCRIPTIONS: (####) = VENDOR CODE; (*) = UNUSED; (O) = USED; (**) = UNUSED/NEVER HINGED; (OG) = ORIGINAL GUM; (DG) = DISTURBED GUM	CAT YEAR	CAT or RETAIL	UPSET
0731	**/*	#10 + 10a Blk/4 Vfine; 2=NH; 2=LH; Line Thru "Hawaii" Upper Right Stamp; From Gold Winning Exhibit (DLC/1938)	2019	\$405.00	\$225.00
0732	*	#10R F-Vfine; OG; HR; From Gold Winning Exhibit (DLC/1938)	2019	\$65.00	\$30.00
0733	*	#10RS Vfine; OG; HR; From Gold Winning Exhibit (DLC/1938)	2019	\$65.00	\$30.00
0734	*	#10SA Vfine; OG; HH; From Gold Winning Exhibit (DLC/1938)	2019	\$25.00	\$20.00
0735	*	#10SA Blk/4; Vfine; NG; From Gold Winning Exhibit (DLC/1938)	2019	\$130.00	\$75.00
0736	*	#10SA Blk/4 With 10SAa; F-Vfine; NG; 2 Closed Tears; From Gold Winning Exhibit (DLC/1938)	2019	\$240.00	\$85.00
0737	*	#11 F-Vfine; Regummed; Thins; Creases; HPS Cert #3073 (FSS/1945)	2019	\$325.00	\$90.00
0738	*	#16 F-Vfine; NG; Filled Thins; Creases; Tears; Tropic Stains; Plate 3G, Type IX, Pos. 9; HPS Cert #3076 (FSS/1944)	2019	\$1,000.00	\$200.00
0739	O	#16 F-Vfine; Thins; Creases; Tears; Plate 3E, Type VIII, Pos. 8; HPS Cert #3083 (FSS/1943)	2019	\$850.00	\$200.00
0740	*	#19 F-Vfine; NG; HR; Thins; Tropic Stain; Stain at Left; Plate 6A, Type IV, Pos. 4; HPS Cert #3081 (FSS/1944)	2019	\$600.00	\$150.00
0741	O	#21 F-Vfine; Thins; Tropic Stain; Plate 9A, Type I, Pos. 9; HPS Cert #3048 (FSS/1944)	2019	\$700.00	\$175.00
0742	*	#23 F-Vfine; NG; Plate 8A, Type X, Pos. 9; HPS Cert #3053 (FSS/1944)	2019	\$300.00	\$130.00
0743	*	#24 F-Vfine; NG; Plate 7A, Type X, Pos. 10; HPS Cert #3054 (FSS/1944)	2019	\$350.00	\$80.00
0744	*	#24 F-Vfine; NG; HR; Light Soiling; Plate 7A, Type III, Pos. 3; HPS Cert #3080 (FSS/1943)	2019	\$350.00	\$100.00
0745	*	#28 Fine; Repaired Bottom Edge Under "UA" of "ELUA"; Part of Letters Drawn in From Edge Repair; HPS Cert. #3069 (FSS/1943)	2019	\$325.00	\$80.00
0746	*	#29 (1) + #29S (3) + #50S (2) Fine to F-VF; All are Unused; 2 Stamps Have Marks on Back (HH/1940)	2017	\$340.00	\$50.00
0747	*	#31 Vfine; OG; LH (PRL/1942)	2017	\$65.00	\$35.00
0748	* / O	#32 Used, NG, Mark on Back (1) + #52c Unused; OG; HH (1); #52c Unused; NG (1) (HH/1940)	2017	\$280.00	\$15.00
0749	*	#33 Fine; NG (DLC/1938)	2019	\$45.00	\$1.00
0750	O	#46 F-Vfine; Missing Perf (BAH/1939)	2019	\$40.00	\$10.00
0751	*	#49 Fine; PG; HH; Bright Color Shade (PRL/1942)	2017	\$325.00	\$80.00
0752	*	#51 Vfine; OG; LH; From Gold Winning Exhibit (DLC/1937)	2019	\$35.00	\$25.00
0753	*	#51 Vfine; OG; HH; From Gold Winning Exhibit (DLC/1937)	2019	\$35.00	\$25.00
0754	O	#51 F-Vfine; From Gold Winning Exhibit (DLC/1937)	2019	\$35.00	\$25.00
0755	*	#51 Pair Vfine; OG; HH; From Gold Winning Exhibit (DLC/1937)	2019	\$70.00	\$40.00
0756	*	#51 Blk/4 F-Vfine; OG; LH; From Gold Winning Exhibit (DLC/1937)	2019	\$160.00	\$90.00
0757	*	#51 Full Sheet of 15 F-Vfine; 12 = NH + 3 LH; From Gold Winning Exhibit (DLC/1937)	2019	\$705.00	\$375.00



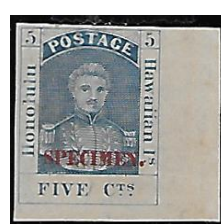
0731



0732



0733



0734



0737



0738



0739



0740



0741



0742



0743



0744



0745



0735



0746



0747



0748



0749



0750



0751



0752



0753



0754



0755



0736

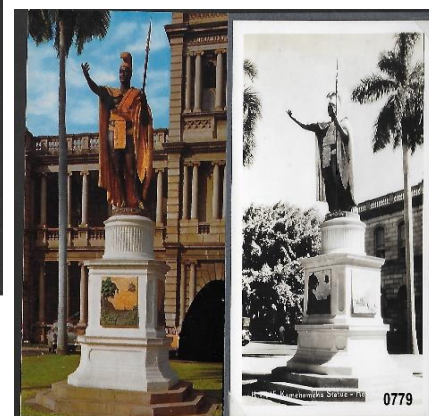
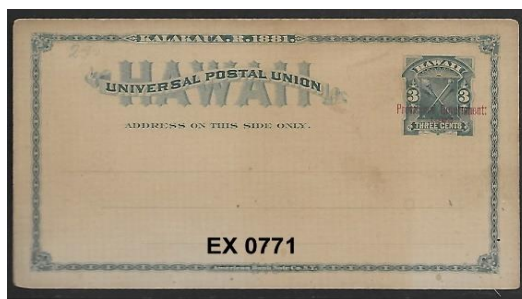
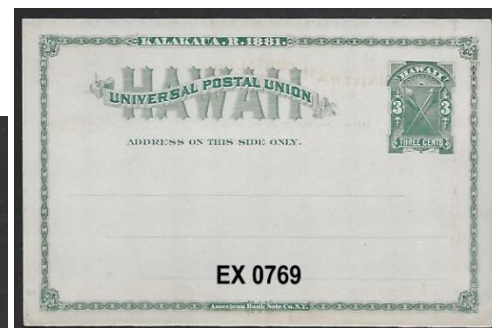
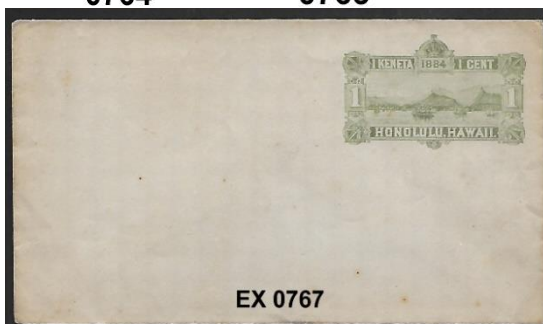


0756



0757

LOT #	* / O	DESCRIPTIONS: (####) = VENDOR CODE; (*) = UNUSED; (O) = USED; (**) = UNUSED/NEVER HINGED; (OG) = ORIGINAL GUM; (DG) = DISTURBED GUM	CAT YEAR	CAT or RETAIL	UPSET
0758	*	#51S F-Vfine; NG; From Gold Winning Exhibit (DLC/1937)	2019	\$35.00	\$25.00
0759	*	#51S Vfine; HH; From Gold Winning Exhibit (DLC/1937)	2019	\$35.00	\$25.00
0760	*	#51S Vfine; LH; From Gold Winning Exhibit (DLC/1937)	2019	\$35.00	\$25.00
0761	**	#51S Blk/4 Vfine; NH; From Gold Winning Exhibit (DLC/1937)	2019	\$175.00	\$125.00
0762	**	#51S Blk/4 Vfine; NH; From Gold Winning Exhibit (DLC/1937)	2019	\$175.00	\$125.00
0763	*	#54b F-Vfine; PG; LH (BAH/1939)	2018	\$140.00	\$35.00
0764	O	#60 Fine; Very Light Cancel (DLC/1938)	2019	\$25.00	\$1.00
0765	*	#61 F-Vfine; NG (BAH/1939)	2018	\$14.00	\$4.00
0766	*	#81 "Flying Goose Flaw"; Vfine; DG; HR; Gum Residue on Face; Tropic Stains; HPS Cert. #3062 (FSS/1943)	2019	\$350.00	\$250.00
HAWAII ENVELOPES + POSTAL CARDS					
0767	* / O	Collection of Envelopes -U1 (2**); U1b (1**); U1 (3 Used); U1 (Uprated w/#42 Used); U2 (4 Unused); U2b (1 Unused); U3 (1 Unused) w/tropic stain; U4 (1 Used) 1887; All are Entire (HH/1940)	2017	N/A	\$80.00
0768	O	U5 Entire; w/Offset Inside (Joe D'Assis E12-0); Koloa to Germany, FEB 1889 (HH/1940)	2017	\$150.00	\$30.00
0769	* / O	Collection of Postal Cards; UX1 (2) Used w/Printed Message (<i>Honolulu Library and Reading Room Association + Honolulu Social Science Association</i>); UX1 (1) Used w/Hawaiian Language 1889; UX2 (1) Mint; UX2 (4) Used 1891-92; UX3 (2) Unused; UX3 (1) Used, 1882 to Germany; All are Entire (HH/1940)	2017	N/A	\$100.00
0770	* / O	Collection of Postal Cards; UX4 (3) Unused; UX4 (4) Used 1891-1900; UX 4 (2) Used w/Printed Message (<i>Young Men's Christian Association + Honolulu Library and Reading Room Association</i>); All are Entire (HH/1940)	2017	N/A	\$55.00
0771	**	Postal Card Collection; All Entire; UX5(1); UX6(1); UX7(5) (HH/1940)	2017	\$165.00	\$65.00
HAWAII TOWN CANCEL					
0772	O	#81 KEOMUKU, laNAI; Vendor Believes this to be POINP #253.01 (27mm ring), IRRRR; however, POINP Does Not Know of an Example to date. Possibly #255.01, Rs, 29mm ring (HH/1940)	2017	\$1.00	\$180.00
HAWAIIANA					
0773	O	#799 Blk/4 On 3 Separate Covers; F-Vfine; Cancelled 24 + 27 July 1959, Keali, Hanalei, Kapaa (PRL/1942)	2017	N/A	\$10.00
0774	**	#3694 Pane/4; Vfine; OG; NH (DLC/1937)	2018	\$5.00	\$2.00
0775	O	C46 First Day Cover; Fine (DLC/1937)	2019	\$24.00	\$4.00
0776	O	C46 Pair + Single on Piece; F-Vfine (DLC/1937)	2019	\$3.75	\$2.00
0777	O	Collection of 12 Submarine Covers; 1965-2008; Pearl Harbor Cancels; Vfine (HH/1940)	2017	N/A	\$15.00
0778	**	Cinderella; Blk/10 Pineapple Post; 1 Lei; NG; NH; Vfine (PRL/1942)	N/A	N/A	\$10.00
0779	**	(1) Hawaii Color Card, Mike Roberts; King Kamehameha Statue; (1) B/W Photo Card H-145 Kamehameha Statue; Both Vfine (DLC/1937)	N/A	N/A	\$1.00
PHILIPPINES					
0780	*	#227 Vfine; OG; LH (PRL/1942)	2017	\$9.00	\$9.00
0781	*	#233 Xfine; LH; OG Pencil "233" On Back (PRL/1942)	2017	\$35.00	\$30.00



LOT #	* / O	DESCRIPTIONS: (####) = VENDOR CODE; (*) = UNUSED; (O) = USED; (**) = UNUSED/NEVER HINGED; (OG) = ORIGINAL GUM; (DG) = DISTURBED GUM	CAT YEAR	CAT or RETAIL	UPSET
AUSTRALIA					
0782	**	#1976a + #2114a (Unburst) Xfine; OG; NH (BAH/1939)	2017	\$27.50	\$2.50
BRITISH ANTARCTIC TERRITORY					
0783	**	#253-57 Xfine; OG; NH (BAH/1939)	2017	\$18.25	\$3.00
COOK ISLANDS					
0784	O	"Official Baratonga Paid" - Stampless Cover; Hand Stamped 1969) (BAH/1939)	N/A	N/A	\$2.00
GERMANY					
0785	** / O	C#1491+1492+1493A+1494A+ (3) Unidentified High Value Stamps; Unused and Used; (6) Pairs and (3) Singles (HH/1940)	2017	N/A	\$6.00
GREAT BRITAIN					
0786	O	#3 Average (BAH/1939)	2017	\$9.00	\$3.00
0787	O	#10 Fine (BAH/1939)	2017	\$90.00	\$6.00
0788	O	#82 Plate #22 F-Vfine (BAH/1939)	2017	\$40.00	\$3.00
JAPAN					
0789	O	##72 on Cover Added to Postal Stationery; F-Vfine (BAH/1939)	N/A	N/A	\$2.00

AND WE ARE PAU!

HPS Members receive a 20% discount and time payments are available

**WE BUY AND SELL
ALL HAWAII!**

OUR EXTENSIVE WEBSITE OF HAWAII ONLY:

www.vogtstamps.com

Stamps, Covers, Postcards, Flight Covers, Documents, Coins, Currency, Paper Ephemera, Autographs, Photographs, Memorabilia, Kahului Railroad. **In short, nearly everything!**

**FROM RARITIES TO COMMON
GEMS TO NOT**

**(MANY NOT ON THE
MARKET FOR HALF A
CENTURY!)**

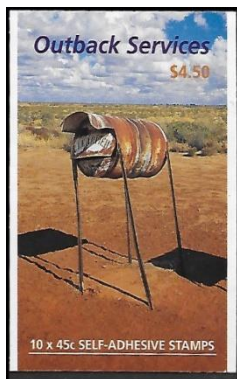


**Shows we will be attending
with our full Hawaiian stock:**

WESTPEX, April, Burlingame, CA
PIPEX, May, Portland, OR
APS, August, Omaha, NE
SESCAL, October, Ontario, CA
**Honolulu Stamp and Coin
Show**, TBA

**650-344-3401 Phone
650-401-5530 Fax
vogtstamps@aol.com**

VOGTSTAMPS-HAWAII



EX 0782



EX 0783



0784



0785



0786



0787



0788



0789

HAWAII

**STAMPS, COVERS, PROOFS, ESSAYS
BUYING & SELLING**



**Hawaii #78, Gutter Specimen Block
12 Cent Blue, 1894, World Class Rarity**

PACIFIC MIDWEST CO.

P.O. Box 730818

San Jose, CA 95173

408-532-7100

EMAIL: GARYUCB@AOL.COM

WE ARE A WORLD CLASS HAWAIIAN DEALER

ASDA APS HAWAIIAN PHILATELIC SOCIETY CHINA STAMP SOCIETY

I wish to submit the following bids for the Hawaiian Philatelic Society auction held on: _____

Print Name: _____

Address:

Telephone:

State:

zip:

[illegible]

Bidding Increments		
0.25 to 5.00 by 0.25	25.00 to 50.00 by 2.50	
5.00 to 10.00 by 0.50	50.00 to 100.00 by 5.00	
10.00 to 25.00 by 1.00	100.00 and up by 10.00	

Must be a member to bid in the Auction.

P.O. Box 10115
Honolulu, Hawaii 96816-0115

ADDRESS SERVICE REQUESTED

