

PO 'OLEKA O HAWAII



PUBLISHED BY: HAWAIIAN PHILATELIC SOCIETY

P. O. Box 10115
Honolulu, Hawaii 96816

Issue No. 31

April 1983

1983

OFFICERS OF THE HAWAIIAN PHILATELIC SOCIETY

President	-	Mr. Wayne T. Yakuma
1st Vice President	-	Mrs. Linda Starr
2nd Vice President	-	Mr. Joseph Sunderland
Secretary	-	Mrs. Virginia May Lewis
Treasurer	-	Mr. Kay H. Hoke
Auctioneer	-	Mr. Max W. Starr

MEETINGS:

Business Meeting and Auction - the 2nd Monday
of each month at Ala Moana Banquet Hall,
Honolulu, at 7:30 P.M.

Swap Meet - the 4th Monday of each month at
the Kaimuki Christian Church, Honolulu,
at 7:00 P.M.

"PO'OLEKA O HAWAII"

Editor - Mrs. Virginia May Lewis

Subscription Price: \$3.00 per year (4 issues)

Advertising Rate: \$5.00 per issue (half page)
\$10.00 per issue (full page)

Checks payable to:

HAWAIIAN PHILATELIC SOCIETY
P. O. Box 10115
Honolulu, Hawaii 96816

SAN FRANCISCO POST OFFICE MARKINGS
ON
MAIL FROM HAWAII

By John M. Mahoney

The numerous Post Office markings of the San Francisco Port of Arrival on mail from Hawaii, during the period 1850 through June 1900, fall into seven logical categories. These are town marks, cogwheels, registration, service, rating and accounting, route marks, and U. S. Army Post Office, San Francisco.

Some of these markings are detailed by William J. Davey in Section 8, Chapter 29, of Hawaii, Its Stamps and Postal History, Meyer-Harris-Davey-Bash and others, 1948. Many are not. There is no good way to integrate all of the markings into Section 8, simply because of the number of them. In addition, Davey does not list most registration markings, and no service markings.

The numbering system that I have used is to assign a whole number to each major type of marking, and within each type consecutive decimal numbers to distinguish sub-types. Where the type is clearly one described by Davey, I have referenced it to his number in parentheses.

There are also several types listed by Davey that I have not seen. These are without illustration. Thus, the general types are:

SECTION 1: TOWN MARKS

- A. Single Circles
- B. Single Circles with Killers
- C. Single Outer and Inner Circles
- D. Ovals
- E. Straight Lines

" 2: COGWHEELS

" 3: REGISTRATION MARKS

SECTION 4: SERVICE MARKS

- " 5: RATING AND ACCOUNTING MARKS
 - A. Postage Due
 - B. Ship Marks
 - C. Paid Marks
 - D. Other Marks
- " 6: ROUTE MARKS
- " 7: U.S. ARMY POST OFFICE, SAN FRANCISCO

The various types of markings were drawn as nearly as possible to their exact measurements, many directly from covers. Others were scaled from photographs in stamp auction catalogues, and the drawing may not be quite accurate. In any event, I have either viewed the marking or have seen a photograph of it in all cases except as noted above in a few of Davey's listings.

This listing is certainly not to be considered a complete listing of all San Francisco marking types, but perhaps a good beginning. The dates of use of each type will no doubt continue to be refined, but the dates of use of early markings are hard to verify.

I invite interested readers to correspond directly with me at 2722 Monserat Avenue, Belmont, California 94002, as to the types of markings, and particularly as to dates of use.

SECTION 1: TOWN MARKS

A. Single Circles

1.11

Single circle, 22mm., SAN
FRANCISCO. /Month and Day/
Hour/CAL. Black: 1890's.
(413.32)

1.14



Single circle, 24mm., SAN FRANCISCO, sans serif. /Month/Day/ serified. CAL. Black: 12/67-2/70

1.15



Single circle, 24mm., SAN FRANCISCO. /Month/Day/Time/. Month and day only serified. CAL. Black: 9/79-6/81

1.18



Single circle, 25mm., SAN FRANCISCO above, PAID ALL below. /Month/Day/. Day only serified. (413.33)

Black: 12/77

Magenta: 2/71-5/75

Red: 5/77-8/78

Color? : 10/76-1/77

Variety: without PAID ALL 12/76-3/77

1.19



Single circle, 25mm., SAN FRANCISCO. /Month/Day/. PAID ALL. Letters slightly larger than 1.18. (413.33)

Magenta: 3/71-2/79

Red: 1/75-5/89

1.20



Single circle, 25mm., SAN FRANCISCO, CAL. /Month/Day/. PAID ALL.

Magenta: 1/87

Red: 1887

Black: 5/92

Color? : 1878 or 1879

1.23



Single circle, 26mm., SAN FRANCISCO, CAL. /Month/Day/. PAID ALL. Month only serifed. Black: 1889-10/92

1.24



Single circle, 26mm., SAN FRANCISCO, CAL. A, /Month-Day/ Time/Year/. REC'D. All sans serif. Black: 10/94

1.25



Single circle, 26mm., SAN FRANCISCO, CAL. /Month-Day/ Year/. PAID ALL. All sans serif. Black: 8/94-12/96

1.28



Single circle, 27mm., SAN FRANCISCO CAL. /Month/Day/. PD. ALL. Month and day serifed. Black: 1889-11/91 Red: 8/81-12/84

1.29



Single circle, 27mm., SAN
FRANCISCO, CAL. /Month/Day/
F D/ serified. RECD.
Black: 1883

1.30



Single circle, 27mm., SAN
FRANCISCO CAL. /Month/Day/
D/. STM. SHIP.
Black: 1/90
Red: 11/83

1.31



Single Circle, 27mm., SAN
FRANCISCO CAL /Month/Day/D/.
Month and day serified. ST.
SHP.
Black: 1889

1.32



Single circle, 27mm., SAN
FRANCISCO, STA C. /Month/
Day/Time/Year/. ? below. All
sans serif.
Black: 1889

1.33



Single circle, 27mm., SAN
FRANCISCO CAL /Month/Day/
Year/. F.D. below. All sans
serif.
Black: 12/92-2/93

1.34



Single circle, 27mm., SAN
FRANCISCO, CAL. ?? /Month/
Day/Time/Year/. REC'D. All
sans serif.
Black: 5/92- /95

1.35



Single circle, 27mm., STA. D
SAN FRANCISCO CAL /Month-Day/
Time/Year/ REC'D. All sans
serif. (413.36)
Black: 2/96-5/96

1.36



Single circle, 27mm., SAN
FRANCISCO, CAL. /Month-Day/
Year/. F.D. below. All sans
serif.
Black: 2/93-3/99

1.37



Single circle, 27mm., SAN FRANCISCO, CAL. REC'D. /Month-Day/Time/Year/. K below. All sans serif. Black: 6/95

1.38



Single circle, 27mm., SAN FRANCISCO, CAL. REC'D. /Month-Day/Time/Year/. STA. D below. All sans serif. Black: 3/97

1.39



Single circle, 27mm., SAN FRANCISCO MAIN. /Month/Day/Time/Year/. 3 below. All sans serif. Black: 8/98

1.40



Single circle, 27mm., SAN FRANCISCO, CAL. /Month-Day/Year/. F.D. below. All sans serif. Black: 9/93-4/99

1.41



Single circle, 27mm., SAN
FRANCISCO, CAL. /Month/Day/
Time/Year/. REC'D. below.
All sans serif.
10/86

1.47



Single circle, 27-1/2mm.,
SAN FRANCISCO, BOX /Month/
Day/Time/ sans serif. 5
below serified.
Black: 7/88

1.49



Single circle, 28mm., SAN
FRANCISCO, BOX /Month/Day/
Time/Year/ sans serif. 3,
6 or 12 below serified.
Black: 12/86-7/97

1.51



Single circle, 29mm., SAN
FRANCISCO, MAIN /Month-Day/
Time/Year/ All sans serif.
Black: 6/99

1.55



Single circle, 31mm., SAN FRANCISCO /Day/Month/ CAL. (small al in Cal.) below, all serified.

Black: 12/52-6/57

1.56



Single circle, 31mm., SAN FRANCISCO /Day/Month/Vear/ Cal below, all serified.

Black: 8/57-6/61

Variety: with period after Cal.

1.57

Single circle, 31mm., SAN FRANCISCO, CAL. /Month/Day/ PAID/.

Magenta: 1869 (413.38)

1.59



Single circle, 32mm., SAN FRANCISCO CAL (small an in SAN and small al in CAL) /Month/Day/ all serified.

PAID below, sans serif.

Magenta: 3/69-3/70 (413.38)

1.62



Single circle, 33mm., SAN FRANCISCO /Day/Month/ CAL below, all serified.

Orange-red: 1850-5/56

Blue: 3/52-8/55

Black: 4/51-4/57

1.63



Single circle, 33mm., SAN FRANCISCO /Day/Month/ CAL. below, all serified. (Same as 1.62 but with period after CAL.)

Red: 11/52-5/54
Blue: 1853 or 1954
Black: 1/56
Color?: 5/52

1.64



Single circle, 33mm., SAN FRANCISCO /Day/Month/ serified. RECD below, sans serif. Orange: 10/50

1.65



Single circle, 33mm., SAN FRANCISCO /Day/Month/ all serified. Orange: 1/51-7/51

1.66



Single circle, 33mm., SAN FRANCISCO /Month/Day/ Cal. below, all serified. Color?: 12/50-2/60 Variety: /Day/Month/

1.67



Single circle, 33mm., SAN FRANCISCO CAL (small al in CAL) /Day/Month/. Large 10 below. All serified. Color?: 2/54

1.68



Single circle, 33mm., SAN FRANCISCO with CAL below, both sans serif. /Month/Day/Year/ serified. Black: 8/55-3/61

1.69



Single circle, 33mm., SAN FRANCISCO CAL sans serif. /Month/Day/Year/. Large 12 and Paid below, all serified. Red: 10/57-11/60 (413.41)

1.70

Single circle, 33mm., same as 1.69 but with large 29 below. Color?: 4/60

1.71



Single circle, 33mm., SAN FRANCISCO CAL sans serif. /Month/Day/Year/. Large 12 below, all serified. Black: 3/58-2/60

1.72



Single circle, 33mm., SAN FRANCISCO CAL sans serif. /Month/Day/Year/ and Paid below, all serifed.

Red: 10/59

Orange: 3/63

1.73



Single circle, 33mm., SAN FRANCISCO CAL serifed.

/Month/Day/PAID/. Month only sans serif.

Color?: 4/60-4/76

Variety: Month serifed.

1.77



Single circle, 35mm., SAN FRANCISCO /Day/Month/

Large 40 below. Day and 40 serifed.

Orange: 1/51

1.78

Single circle, 35mm., same as 1.77 but with 80 below.

Red: 4/50

B. Single Circles With Killer

1.81



Single circle, 24mm., SAN FRANCISCO /Month-Day/Time/Year/ CAL. below, with oval barred killer-3.
Color?: 10/81

1.84



Single circle, 25mm., SAN FRANCISCO, CAL. /Month-Day/Time/Year/ with oval killer of bars, solid sides - M.O.
Black: 10/99

1.86



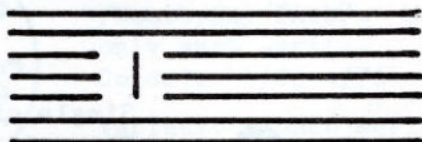
Single circle, 25mm., SAN FRANCISCO, CAL. /Month-Day/Time/Year/ with oval killer of bars, solid sides - 17.
Black: 3/94

1.87

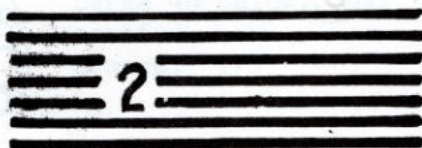


Single circle, 26mm., SAN FRANCISCO, CAL. /Month-Day/Time/Year/ with oval killer of bars, solid sides - K.
Black: 2/96

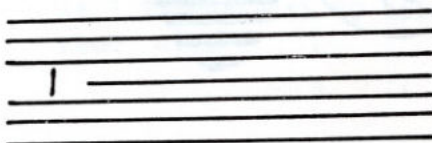
- 1.91 Single circle, 18mm., SAN FRANCISCO CAL. /Month-Day/Time/. Year below, with killer of heavy bars 54mm. long around figure 1.
Black: 1890's



- 1.92 Single circle, 18mm., SAN FRANCISCO, CAL. /Month-Day/Time/. Year below, with killer of heavy bars 54mm. long around figure 2.
Black: 1890's



- 1.93 Single circle, 20mm., SAN FRANCISCO, CAL. /Month-Day/Time/. Year below, with killer of thin bars 56mm. long around figure 1.
Black: 3/95



C. Single Outer and Inner Circles

1.97



Single-lined outer circle, 26mm., and inner circle 13-1/2mm., SAN FRANCISCO /Year/Day/Month/ or /Month/Day/Year/, CAL below. Used with both "cogs".

Black: 11/57-12/68 (413.61)

Varieties:

- Year does not show;
- Only small part of year shows;
- Only black mark shows.

D. Single Lined Outer and Inner Ovals

1.111



Single lined outer and inner ovals, 31x21mm., SAN FRANCISCO above and CAL. below, with large letter in the center: C, F, I, P. (413.22)

Black: 1880's and 1890's

Purple: 12/98

1.112

Single lined outer and inner ovals, 32x22mm., SAN FRANCISCO CAL below, with large letter D in center. (413.21)

E. Straight Lines

- 1.115 Two straight lines, about 32x7mm., SAN FRANCISCO, CAL top line, Month-Day-Time-Year bottom line within horizontal bars, with killer of diagonal bars enclosing the figure 2. Black: 3/97

SAN FRANCISCO, CAL
MAR 13 930 AM '97

2

- 1.118 Three straight lines, about 32x9mm., SAN FRANCISCO top line, - CAL. - center line, Month-Day-Time-Year bottom line with killer of horizontal bars 81mm. long enclosing the figure 2. Black: 6/99

SAN FRANCISCO-
- CAL. -
JUN 25 930 PM 99

2

- 1.121 Three straight lines, about 31x10mm., SAN FRANCISCO top line, - CALA - center line, Month-Day-Time-Year bottom line with killer of wavy broken lines 58mm. long enclosing the figure 1. Black: 9/98

SAN FRANCISCO
- CALA -
SEP 9 6 PM '98

1

- 1.122 Three straight lines, about 32x9mm., SAN FRANCISCO top line, - CALA - center line, Month-Day-Time-Year bottom line with killer of diagonal bars 72mm. long enclosing the figure 2. Black: 2/98

SAN FRANCISCO-
- CALA -
FEB 22 130 PM '98

2

- 1.123 Three straight lines, about 32x9mm., SAN FRANCISCO top line, - CALA. - center line, Month-Day-Time-Year bottom line with killer of wavy lines 82mm. long enclosing the figure 2. Black: 8/98

SAN FRANCISCO
- CALA. -
AUG 15 10 - AM '98



SECTION 2: COGWHEELS

2.11



Cogwheel, 20mm. diameter, 16 spokes. Two heavy circles within: inner 4-1/2mm.; outer 10mm.
 Black: 6/62-3/63

2.12



Cogwheel, 20mm. diameter, 14 spokes. Two heavy circles within: inner 7mm.; outer 11mm.
 Black: 5/61-9/67

SECTION 3: REGISTRATION MARKS

- 3.11 Three straight lines about 40x33mm., REGISTERED serified, top line. Month-Day-Year. SAN FRANCISCO, CAL.

3.12



Single circle, 31mm., SAN FRANCISCO CAL., small AL in CAL. /Month/Day/ REGISTERED below. Month only serified. Black: 10/72

3.13



Single circle, 33mm., San Francisco, Cal. small letters. /Month-Day-Year/ F.D. / REGISTERED below. Purple: 5/95-9/96

3.14



Double lined oval, 42x28mm., REGISTERED above, serified. /Month-Day-Year/ San Francisco, Cal. below. Lavender: 11/99

3.15

3283

16960

Plain numerals, sans serif, in a group of three, four or five, on the face of covers. Purple: Late 1890's Green: Late 1890's

SECTION 4: SERVICE MARKS

4.11

General Delivery
P.M. SEP 20 1898

Two straight lines, 45x10mm.,
General Delivery above,
Time-Month-Day-Year below.
Purple: 9/98

4.12

RECEIVED UNSEALED, one line
58x4-1/2mm., plain letters,
sans serif.
Purple: 1899

4.15

ADVERTISED
San Francisco Cal
OCT 10 98
Due 1ct.

Four straight lines, ADVERTISED
line one, San Francisco Cal
line two, Month-Day-Year line
three, Due 1ct. line four,
40x22mm.
Dark Magenta: 10/98

4.16

U.S. CHARGE
TO COLLECT **20** **CENTS**

Postage due on two straight
lines, 55x8mm.:
U.S. CHARGE 20 CENTS
TO COLLECT
All sans serif.
Black: 1899

4.19

Non-reclame.

Unclaimed letter, one straight
line 31mm., Non-reclame.
Purple: 1898

4.23



Single lined outer circle,
27mm., single lined inner
circle, 17mm., Name not in
P.O. Directory above, large
3 in the center, star below.
Purple: 1898

SECTION 5: RATING AND ACCOUNTING MARKS

A. Postage Due

5.11

Manuscript, Due 5
Color?: 9/64

5.12

DUE 2

Single line, Due 2, 40x10mm.,
serifed.
Color?: 1865 (421)

B. Ship Marks

5.20



Circle, 17-1/2mm., with SHIP
sans serif, large figure 6
in center within fancy scroll.
Orange: 1/50-10/50 (432)
Black: 8/52-12/59

5.21

SHIP

SHIP, 23x10mm., serifed,
plus large 8 within circle,
17mm., serifed.
Black: 12/59-12/66 (428 & 434)



Red: 5/55
Blue: 1/53

5.22

SHIP² 2

SHIP, 25x11mm., serifed,
plus 22. Apparently separate-
ly struck two's, 10x7mm.,
making 22. (428)
Color?: 8/53-12/57

5.23

SHIP 12

SHIP, 23x10mm., serified,
plus 12, 11x12mm., serified.
(428 & 435)

Black: 11/53-6/57

5.24

SHIP as in 5.23, but without
numerals. (428)

5.25

12 as in 5.23, but without
SHIP. (435)

Black: 3/52-8/53

5.26

SHIP 6

SHIP, 21x8mm., plus 6,
7x10mm., SHIP sans serif.
(430)

Color?: 1/64-7/64

5.27

SHIP, manuscript, plus 12
as in 5.23.

Magenta: 8/53

5.28

**PAID
8
SHIP**

PAID above and SHIP below
serified in partial oval,
28x30mm., large 8 within.
Black: 9/51 (425)

5.29

5

5, 8x12mm., used with 5.24
SHIP.

Color?: 2/59

C. PAID Marks

5.35

8

PAID

PAID, 18x6mm., plus large
8 within 17mm. circle,
serifed. (424 & 434)

Blue: 1/53-1/54

Red: 11/52-5/56

Black: 9/52-9/53

5.36

PAID

6

PAID, 18x6mm., plus 6,
8x11mm., serifed. (424 & 430)

Color?: 1/64

5.37

PAID 12

PAID, 35x10mm., plus 12,
11x10mm., serifed.

Color?: 10/56-11/56

D. Other Marks

5.45

FOREIGN

FOREIGN, 50x9mm., large
block letters sans serif,
plus 5, 10x13-1/2mm.

Color?: 9/64 (422)

5

SECTION 6: ROUTE MARKS

- 6.11 CHINA AND JAPAN STEAM SERVICE. Double-lined oval, ornament in center. (441)
Red: 1868
- 6.12 HAWAIIAN STEAM SERVICE. Double-lined oval, 30x15mm. (442)
Red: 1867-1873
- 6.13 **OVERLAND** OVERLAND, 40x5mm., serified.
Black: 12/59-2/60

SECTION 7: U.S. ARMY POST OFFICE, SAN FRANCISCO

7.11



Single circle, 27mm.,
PRESIDIO CAL /Month/Day/
Time/Year/, all sans serif.
(Hawaii No. 75 on cover
posted aboard troop trans-
port ship in San Francisco
Bay by returning serviceman
from the Philippine cam-
paign of the Spanish Ameri-
can War.)
Color?: 9/98

References:

Hawaii, Its Stamps and Postal History, Meyer-Harris-
Davey and Others, 1948, The Philatelic Foundation,
New York.

The Hawaiian Philatelist, James "Ted" Mitchell, Los
Angeles, Vol. IV, No. 2, 1981.

Stamp Auction Catalogues:

Alevizos, George, California, 11/11/82.

American Philatelic Brokers, Florida, 5/31/80.

Fox, John A., New York, 12/10/57.

Harmer, H. R., New York, 10/8-9/57, 5/27/62,
4/7/65.

Harmer, Rooke, London, 4/27/54, 10/4-5/54.

Hughes, J. R., California, 11/29/56.

Kenedi, Peter, California, 12/16/79.

Lowe, Robson, London, 5/2/75, 12/2/76,
1/26-27/78, 4/2/82.

Metro Stamp Co., Inc., New York, 9/11/82.

Siegel, Robert A., Galleries, Inc., New York,
9/19/74.

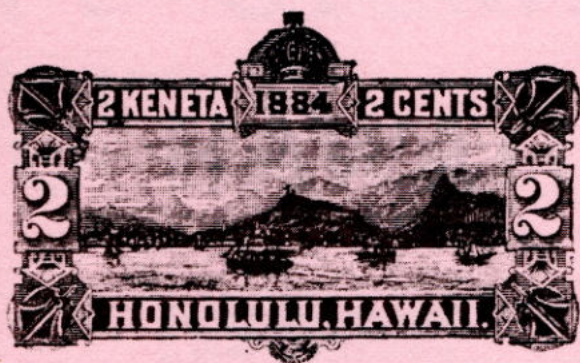
Sotheby, Park, Bernet, Connecticut, 11/18/80.

Superior Stamp and Coin Co., Inc., California,
8/4/80.

Wolffers, Richard, California, 3/15-16/74,
4/26-27/74, 4/30/77, 11/30/78, 12/4/80,
1/21/80, 4/30/82.

* * * * *

The Philatelic Foundation
announces the publication of a revised edition of
HAWAII
Its Stamps and Postal History



This popular book, originally published in 1948, has been long out of print. The revision of the Meyer-Harris original will incorporate new facts and finds brought to the attention of The Foundation over the years. Under the editorship of Richard Graham, well-known philatelist and writer, *Hawaii, Its Stamps and Postal History* is expected to be off the press in late 1984.

The Philatelic Foundation would welcome your participation in this revision. If you know of an item or event you feel should be included in this book, we would like to know about it. The areas to be covered in this revision range from postal history prior to 1850, to all postal and revenue issues as well as postal stationery.

Please complete the form below and return it to us.

THE PHILATELIC FOUNDATION, 270 MADISON AVE., NEW YORK, NY 10016

☐ I believe that I have a new item for your Hawaii book: (Give brief description) _____

(Allow two weeks for a reply)

Name _____

Address _____

City _____ State _____ Zip _____