



# HAWAIIAN PHILATELIC SOCIETY



Affiliate  
#136

ORGANIZED 1911

P.O. Box 10115, Honolulu, HI 96816-0115 USA

WEB SITE: [hpshawaii.com](http://hpshawaii.com)

EMAIL - [hiphilsoc@gmail.com](mailto:hiphilsoc@gmail.com)

December 2020

President: Wayne Yakuma; 1st Vice-President: Glenn Yokoyama; 2nd Vice-President: Kay Kimura; Treasurer: Jerry C. Coiner; Secretary: Phillip C. Mendel; Auctioneer: Ben Gale; APS Representative: Phillip C. Mendel; Po'Oleka O Hawaii Editor: Gregory Chang; Membership Chair: Gannon Sugimura; Bulletin Meister: Richard Yanagi



- ① The **Annual Christmas Dinner** has been cancelled due to corona virus prohibitions.
- ② **WANTED:** An HPS member is looking to purchase 2 flight covers: First Inter-Island flight covers from Hilo (magenta color) and Wailuku (purple) both dated Octobers 8, 1934. Contact Ben Gale, Auctioneer for details or questions.
- ③ Have you been to the Society's website? Check it out at [www.hpshawaii.com](http://www.hpshawaii.com).
- ④ **WANTED:** To purchase a copy of "**The IDC Hawaii Stamps & Related Issues**" by Joe D'Assis. Contact Ben Gale, Auctioneer should you have one for sale.
- ⑤ Due to the corona virus restrictions, the Society was forced to delay the **annual election of officers**. All of the Board Members have graciously agreed to continue in their current capacity until an election can be held. Anyone interested in an elected or appointed office, please contact Wayne Yakuma, President.
- ⑥ **Annual Membership Fees** are due and payable. See notes below for details. The Society needs your continued support. Please check your mailing address – if it says "DD Oct 2020", your membership fees are due. Mahalo for sending them in. **See below**

## MEMBERSHIP

An individual Membership fee for the Hawaiian Philatelic Society is \$24.00 per year (Oct-Sep). Payable on October 1<sup>st</sup> of the current year. Membership includes a mailed hard copy, or e-copy if requested, of the monthly Bulletin/Auction and a mailed hard copy of the Society's Po'Oleka Journal (twice yearly). International membership is \$24.00/year for an e-copy of the monthly Bulletin/Auction and a mailed hard copy of the Po'Oleka Journal (twice yearly). International members requesting a hard copy of the monthly journal and a mailed copy of the Po'Oleka (twice yearly) are subject to a \$40.00 per year membership fee. Pro-rated, Life, Spouse and Junior membership fees are detailed on the Society's website [www.hpshawaii.com](http://www.hpshawaii.com). At this time, only checks are accepted for payment and must be mailed to the Society's Post Office Box 10115, Honolulu, HI 96816-0115.

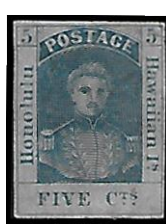
Lot #	* / O	DESCRIPTIONS: (####) = VENDOR CODE; (*) = UNUSED; (O) = USED; (**) = UNUSED/NEVER HINGED; (HR) = HINGE REMNANT; (HM) = HINGE MARK; (OG) = ORIGINAL GUM; (DG) = DISTURBED GUM	CAT YEAR	CAT OR RETAIL	UPSET
<b>HAWAIIAN POSTAGE</b>					
1201	O	#6 F-Vfine; Thins on right edge; Creases; Scuffs; 7 Bar circular cancel; HPS Cert. #2917 (FSS/2096)	2017	\$1,700.00	\$280.00
1202	*	#8 F-Vfine; Regummed; Pinholes; HPS Cert. #2909 (FSS/2096)	2017	\$700.00	\$140.00
1203	*	#9 F-Vfine; Regummed; Thins; Tears; HPS Cert. #2958 (FSS/2096)	2017	\$400.00	\$80.00
1204	*	#15 Plate 44-B, Type IV, Pos. 4; F-Vfine; NG; W/Faults & Repairs; PSAG Cert. #0577618 (FSS/2095)	2017	\$650	\$120.00
1205	O	#16 Plate 3-C, Type VI, no Pos. noted; F-Vfine; Repaired UL corner; SPA Cert. #3174 (BRG/2091)	2020	\$850.00	\$95.00
1206	O	#16 Plate 3-F, Type II, Pos. 2; F-Vfine; Thins; HPS Cert. #3050 (FSS/2095)	2017	\$850.00	\$150.00
1207	O	#21 Plate 9-A, Type VII, Pos. 3; Avg; Thins; Tears; Creases; Piece out lower right corner; Oil stains; HPS Cert. #2963 (FSS/2095)	2017	\$700.00	\$60.00
1208	*	#23 Plate 8-A, Type VII, Pos. 8; Vfine; NG; Horizontal Crease; Minor toning & soiling at top; PSAG Cert. #0571174 (FSS/2096)	2017	\$300.00	\$100.00
1209	*	Two numerals described by vendor as "probably fake" (GK/2094)	N/A	N/A	\$10.00
1210	O	#28 F-Vfine; Creases; Tropical stains; w/blue Lahaina grid cancel; HPS Cert. #2930 (FSS/2095)	2017	\$325.00	\$90.00
1211	*	#28 F-Vfine; Regummed; Thins; Repaired filled thin; HPS Cert. #3015 (FSS/2095)	2017	\$325.00	\$75.00
1212	*	#31 F-Vfine; HR; NG (BRG/2091)	2020	\$65.00	\$25.00
1213	*	#31a Vfine; HR; OG; Pretty stamp (BRG/2091)	2020	\$55.00	\$17.50
1214	*	#32 Vfine; HR; NG Well-centered (BRG/2091)	2020	\$175.00	\$45.00
1215	*	#32 Just Fine; HR; Rich color; Obvious Frame Lines (SAI/2092)	2020	\$175.00	\$37.50
1216	O	#32 (1 Pr + 2 Singles) F-Vfine; Total 4 stamps (LD/2090)	2020	\$120.00	\$35.00
1217	*	#33 Average; DG (SAI/2092)	2020	\$45.00	\$5.00
1218	*	#34 Fine; NG (BRG/2091)	2020	\$100.00	\$20.00
2019	O	#35 (10) F-Vfine; Assorted Town & Killer cancels (LD/2090)	2020	\$30.00	\$7.50
1220	O	#37 (6) F-Vfine; Assorted cancels (LD/2090)	2020	\$36.00	\$7.50
1221	*	#38 Fine; HR; Round Corner Lower Left (SAI/2092)	2020	\$125.00	\$32.50
1222	O	#39 (10 singles); F-Vfine; Assorted cancels (LD/2090)	2020	\$30.00	\$6.50
1223	O	#39 + US E2 on piece; F-Vfine (SAI/2092)	2020	\$48.00	\$11.00
1224	*	#41P3 + #41 (used); Avg; HR; NG; All 4 margins trimmed tight; Pencil mark on back "PROOF"; Tropic Stain on back (PV/20100)	2020	\$400.00	\$90.00
1225	O	#43 On Cover to Kohala, Hawaii; "Per steamer Kinau"; Natural toning on edges of envelope; Face free cancel; F-Vfine (RT/2099)	N/A	N/A	\$25.00
1226	*	#47 Vfine; HH; Well Centered (SAI/2092)	2020	\$160.00	\$40.00
1227	*	#49P3 F-Vfine; NG; Mark on face LR; Stain on back (PV/20100)	2020	\$400.00	\$150.00
1228	*	#54b Fine; HR (SAI/2092)	2020	\$140.00	\$45.00
1229	* / O	#56 F-Vfine; (1) Unused/NG/Jumbo + (2) Used (LD/2090)	2020	\$52.50	\$18.50
1230	*	#58 Block/4 F-Vfine; HR; Fresh appearance (SAI/2092)	2020	\$72.50	\$30.00
1231	O	#59 PR on cover; Vfine; Face-Free; 2/8/1894 Honolulu to Manchester, England (RT/2099)	N/A	N/A	\$50.00
1232	O	#62 Fine; Closed tear; Repaired tear from top to mid-stamp; Great place holder (PV/20100)	2020	\$20.00	\$2.00
1233	*	#63 F-Vfine; Jumbo copy; Note error in weak impression of "_893" OP; Only 25 exist per D'Assis (SAI/2092)	2020	\$175.00	\$80.00
1234	*	#64b Just Fine; HR; Scarce missing "period" error (SAI/2092)	2020	\$350.00	\$135.00
1235	**	#66 Block/20 w/66b F-Vfine NH; OG; Full ABNCo inscription at top; Small brown stain on #10 (SAI/2092)	2020	\$141.25	\$50.00
1236	*	#72b Fine; PG; Tears; Torn in half & repaired (FSS/2095)	2017	\$500.00	\$100.00
1240	*	#81 Specimen w/hole punch; F-Vfine; NG; HPS Cert. #2947 (FSS/2097) See scan on page #3	2017	R\$300.00	\$140.00



1201



1202



1203



1204



1205



1206



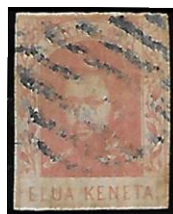
1207



1208



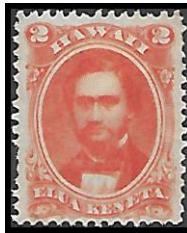
1209



1210



1211



1212



1213



1214



1215



EX 1216



1217



1218



EX 1219



EX 1220



1221



EX 1222



1223



1224



1226



1227



1228



EX 1229



1230



1231



1232



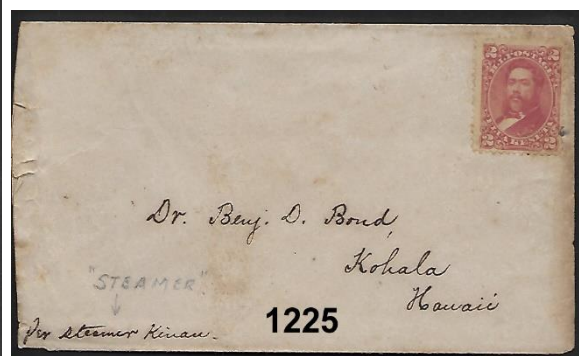
1233



1234



1235



1225



1236



1240

Lot #	* / O	DESCRIPTIONS: (####) = VENDOR CODE; (*) = UNUSED; (O) = USED; (**) = UNUSED/NEVER HINGED; (HR) = HINGE REMNANT; (HM) = HINGE MARK; (OG) = ORIGINAL GUM; (DG) = DISTURBED GUM	CAT YEAR	CAT OR RETAIL	UPSET
1237	O	#75 On cover; Vfine; 8/10/96 "Per S.S. Mokolii" to Kalae, Molokai (RT/2099)	N/A	N/A	\$25.00
1238	O	#76 On Cover; F-Vfine; 11/16/1897, "Per Australia" from Honolulu to San Francisco; H. Hackfeld & Co. Corner Card; SF backstamp (RT/2099)	N/A	N/A	\$30.00
1239	O	#78 On front cover only; F-Vfine; 1898 to Vermont w/6 cents postage due; Stamped "US Charge to Collect 6 Cents" (SAI/2092)	2020	N/A	\$18.00
<b>ENVELOPES &amp; POST CARDS</b>					
1241	**	U11 Entire Vfine; Flap is sealed (KSS/2098)	2019	\$6.00	\$1.00
1242	**	U3 Entire Fine; Size 6 Round flap-unsealed w/5mm separation; (1) insect hole; Toned overall (GK/2093)	2017	\$50.00	\$3.00
1243	**	U3 Entire Average; Size 6 round flap-unsealed w/50mm separation of flap from cover; Single insect pin hole; Toned (GK/2093)	2017	\$50.00	\$3.00
1244	**	U3 Entire F-Vfine; Size 6 round flap-unsealed; (1) insect pin hole; Toned (GK/2093)	2017	\$50.00	\$3.00
1245	**	UX1 Entire F-Vfine; Reverse imprint "Armory Honolulu Rifles" blank; Toned (GK/2093)	2017	\$30.00	\$10.00
1246	**	UX1 Entire F-Vfine; Reverse imprint "Armory Honolulu Rifles" blank; Toned w/several dark spots on face (GK/2093)	2017	\$30.00	\$5.00
1247	**	UX1 Entire F-Vfine; Reverse imprint "Armory Honolulu Rifles", blank; Toned (GK/2093)	2017	\$30.00	\$10.00
1248	O	UX1 Entire F-Vfine; Honolulu to London "Sep 23, 1892"; Hand-written birthday greeting on back (KSS/2098)	2020	\$75.00	\$25.00
1249	*	UX1 Entire fine; Toned; 5 mm wide paper adhesion on back, left side running top to bottom-not visible from front (GK/2093)	2017	\$30.00	\$5.00
1250	**	UX2 Entire Vfine; Clean copy (GK/2093)	2017	\$50.00	\$8.00
1251	O	UX4 F-Vfine; Pre-printed back "Office of Honolulu Water Works" completed and signed "Dec 9, 1890"; Honolulu cancel "Dec 26, 1890" Single Insect hole UL corner (KSS/2098)	2019	\$50.00	\$15.00

#### Results of the November 9, 2020 Auction—Lots not listed are passed lots

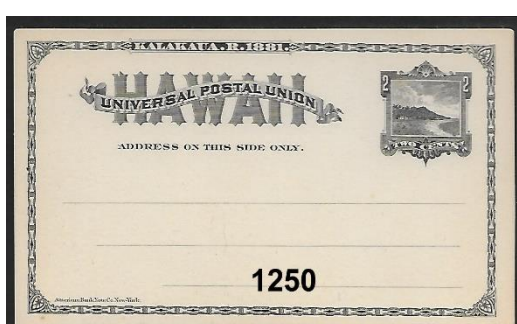
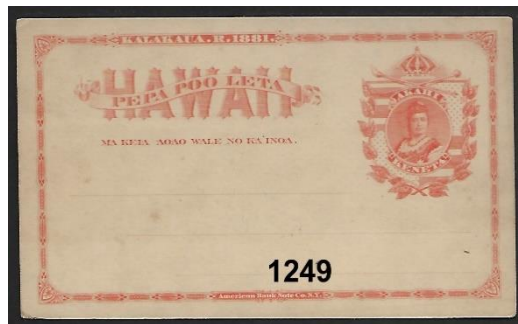
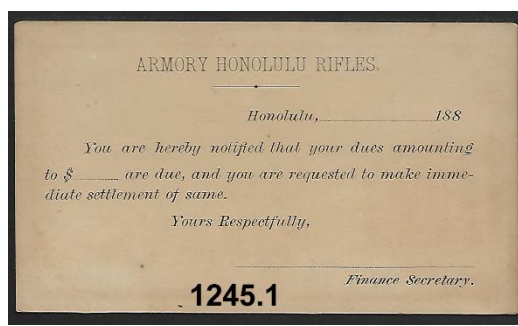
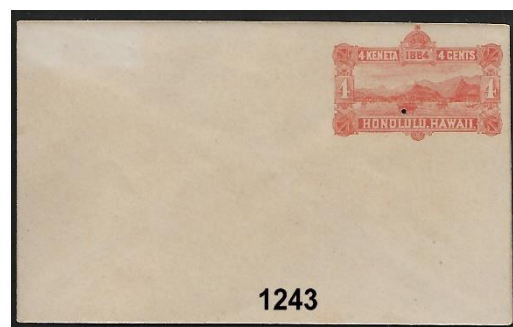
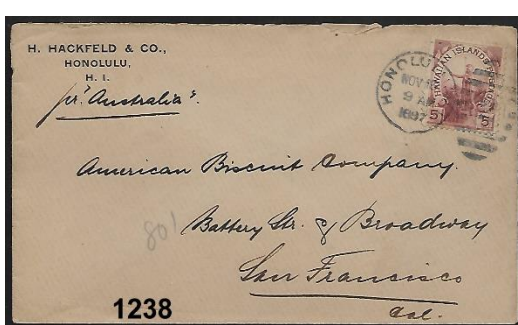
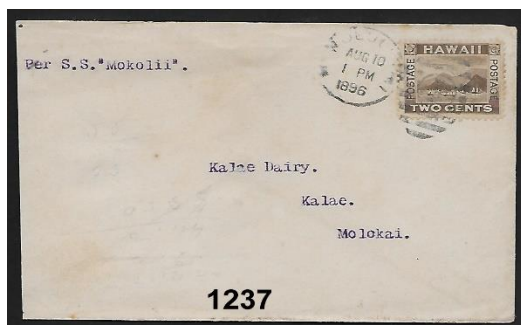
1102-\$7.00; 1103-\$10.00; 1104-\$6.50; 1106-\$4.25; 1107-\$2.75; 1108-\$3.25; 1109-\$2.00; 1110-\$4.25; 1111-\$3.00; 1112-\$4.25; 1114-\$3.75; 1115-\$9.25; 1116-\$2.50; 1117-\$6.50; 1118-\$3.00; 1119-\$2.25; 1120-\$8.00; 1124-\$2.50; 1125-\$18.00; 1126-\$17.00; 1127-\$3.75; 1128-\$32.50; 1129-\$4.25; 1130-\$18.00; 1131-\$1.75; 1133-\$2.25; 1134-\$7.50; 1135-\$2.50; 1139-\$100.00; 1143-\$19.50; 1144-\$60.00; 1146-\$4.75; 1148-\$4.75; 1150-\$4.75; 1151-\$4.25; 1153-\$2.75; 1154-\$12.00; 1155-\$75.00; 1156-\$200.00; 1157-\$20.00; 1158-\$80.00; 1159-\$13.00; 1160-\$5.50; 1161-\$5.00; 1162-\$3.00; 1163-\$4.25; 1164-\$8.00; 1166-\$2.75; 1167-\$4.25; 1168-\$6.00; 1169-\$7.00; 1170-\$4.25; 1171-\$3.25; 1172-\$2.75; 1173-\$6.50; 1174-\$16.00; 1175-\$15.00; 1176-\$7.50; 1177-\$13.00; 1178-\$11.00; 1179-\$5.00; 1181-\$6.00; 1184-\$2.00

#### CALENDAR OF FUTURE EVENTS

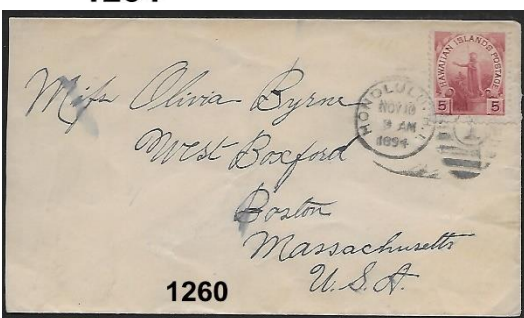
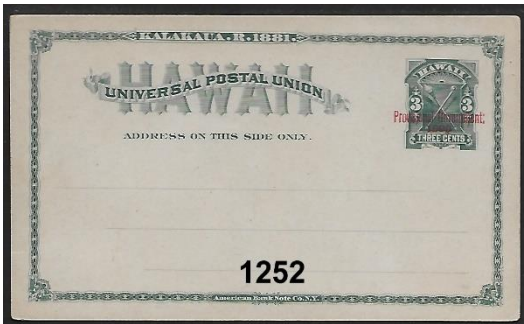
**All Future Executive & General meetings are cancelled until further notice due to the corona virus**

December 7, 2020	HPS Executive Board Meeting	Cancelled
December 14, 2020	HPS General Meeting & Auction	St. Louis Club House – Cancelled due to coronavirus
January 4, 2021	HPS Executive Board Meeting	Cancelled
January 11, 2021	HPS General Meeting & Auction	No Meeting Scheduled. Auction Will Be Mail Only.

**NOTE: St. Louis Alumni Association Club House is located at 925 Isenberg Street, Honolulu**



Lot #	* / O	DESCRIPTIONS: (####) = VENDOR CODE; (*) = UNUSED; (O) = USED; (**) = UNUSED/NEVER HINGED; (HR) = HINGE REMNANT; (HM) = HINGE MARK; (OG) = ORIGINAL GUM; (DG) = DISTURBED GUM	CAT YEAR	CAT OR RETAIL	UPSET
1252	**	UX7 Entire F-Vfine; Toned w/contact marks on back along top edge; Attractive face (GK/2093)	2017	\$75.00	\$8.00
1253	**	UY3r Entire Vfine; 1889 Reply card only-detached (SAI/2092)	2020	\$35.00	\$10.00
		<b>HAWAIIAN TOWN CANCELS + KAHULUI RAILROAD</b>			
1254	O	#75 HAMAKUapoko, MAui; POINP #281.011; Black; R9; Fine to Average (KSS/2098)	2019	\$0.60	\$0.50
1255	O	#75 On Piece; HAMAKUAPOKO; M/H #281.011; Purple; R8; F-Vfine (GK/2094)	2017	\$0.60	\$3.00
1256	O	#75 O Piece; HANAIEI; M/H #282.011; Purple; R6 F-VF (GK/2094)	2017	\$0.60	\$3.00
1257	O	U2 Cut Square; HeelA, OAHU; POINP #281.03; Purple; R4; Dated "JUL 24, 1893"; Fine (SAI/2092)	2020	\$4.00	\$8.00
1258	O	#76 On cover; HILO, HAWAII; M/H #271.035; Black; R10; Fine; To Des Moines, IA, Dated "Oct 25, 97" (GK/2094)	2017	\$25.00	\$10.00
1259	O	#80; HILO; M/H #271.035; Black; R10; Fine (GK/2094)	2017	\$1.50	\$3.00
1260	O	#76 On cover; HONOLULU, H.I.; M/H #231.72; Black; R10; To Boston, Mass. Dated "Nov 10, 1894" (GK/2094)	2017	\$25.00	\$10.00
1261	O	U12 Entire; HONOLULU, H.I.; M/H #231.72; Black; R10; To Woburn, Mass.; Dated "APR 2, 1896"; Fine (GK/2093)	2017	\$15.00	\$10.00
1262	O	U2 Entire; HONOLULU, H.I.; M/H #231.82; Black; R10 (GK/2093)	2017	\$17.50	\$10.00
1263	O	#82 On cover; HONolulu; M/H #232.92; Black; R10; Average; Left top corner missing; Back stamp "San Francisco 11/7/1899"; "Wall, Nichols Company, Ltd" corner card (KSS/2098)	2019	\$25.00	\$15.00
1264	O	U2 Entire; Vendor states "possibly Kahalui; M/H #255.12; Black"; F-Vfine (GK/2093)	2017	\$17.50	\$10.00
1265	O	#74 + #76 On #10 cover; KAHULUI, MAUI; POINP #272.642; Blue; R6; Dated "FEB 22, 1899"; Alexander Baldwin corner card; Folded once on left end; F-Vfine (SAI/2092)	2020	\$50.00	\$60.00
1266	O	#75 On piece; KAHULui, Maui; M/H #281.01; Purple; R6; F-Vfine (GK/2094)	2017	\$0.60	\$3.00
1267	O	#75 kailUA; POINP #282.011; Black; R8; Fine/Avg (KSS/2098)	2019	\$0.60	\$0.75
1268	O	#81 KAILua, hawaii; POINP #282.011; R8; F-Vfine (KSS/2098)	2019	\$1.00	\$0.75
1269	O	#43 KaUNAKAKai, molokai; M/H #282.046; Purple; R6; Fine (GK/2094)	2017	\$1.00	\$3.00
1270	O	#75 On piece; KEALAKEKUA, HAWAII; M/H #282.011; Purple; R7; Dated "AUG 19, 1895"; F-Vfine (GK/2094)	2017	\$0.60	\$5.00
1271	O	#52 On piece; KEKAHA, KAUAI; M/H #282.011; Black; R7; Dated "APR 8, 1893" (GK/2094)	2017	\$1.50	\$3.00
1272	O	#75 On cover; Entire; KILAUEA, KAUAI; M/H #281.01; Purple; R7; Back stamped HONOLULU; M/H#231.72; F-Vfine (GK/2094)	2017	\$25.00	\$10.00
1273	O	#77+ #78+ #79 On lge. cover; KILAUEA, KAUAI; POINP #282.011; Purple; R7; Addressed to Drome, France; Back stamped Victoria, B.C.; tropic stain; Previously sold for over \$400.00 (SAI/2092)	2020	\$295.00 R\$400.00	\$180.00
1274	O	#81 KILAUEA, kauai; POINP #282.011; Pur; R7; F-VF (KSS/2098)	2019	\$1.00	\$0.75
1275	O	#43 MAHUKONA, HAWAII; M/H #282.016; Black; R6 Fine; Dated "SEP 7, 1888" (GK/2094)	2017	\$1.00	\$3.00
1276	O	#76 On piece; maKAWELI, Kauai; M/H #282.013; Purple; R5; Dated "OCT 2, 1897"; Fine (GK/2094)	2017	\$2.00	\$3.00
1277	O	#75 MAKAWao, maui; POINP #281.011; Blk; R6; Fine (KSS/2098)	2019	\$0.60	\$1.00
1278	O	#43 maKAWao, maui; POINP #282.012; Purple; R7; Fine (KSS/2098)	2019	\$1.00	\$1.00



Lot #	* / O	DESCRIPTIONS: (####) = VENDOR CODE; (*) = UNUSED; (O) = USED; (**) = UNUSED/NEVER HINGED; (HR) = HINGE REMNANT; (HM) = HINGE MARK; (OG) = ORIGINAL GUM; (DG) = DISTURBED GUM	CAT YEAR	CAT OR RETAIL	UPSET
1279	O	#81 On cover; (Paia) MaUI; M/H #253.9a1; R7; Back stamped Honolulu M/H #231.82; Torn; Scuff; Tropic stain; Includes 2-page letter from father to children at school (GK/2094)	2017	\$20.00	\$15.00
1280	O	U3 Cut square; SPRECKELSVILLE; POINP #259.04; Purple; R5 F-Vfine (KSS/2098)	2019	\$7.50	\$6.00
1281	O	#43 On piece; waiLUKU, maui; M/H #282.01; Black; R6; Fine (GK/2094)	2017	\$1.00	\$3.00
1282	O	#38 WAILuku, maui; POINP #285.012; Black; R2; F-VF (KSS/2098)	2019	\$47.50	\$18.00
1283	O	#74 wAIMEA, kaUAI; POINP #282.011; R9; Fine (KSS/2098)	2019	\$1.50	\$0.50
1284	*	#152 KRR; NG; XFine; Bottom right corner sheet stamp (PV/20100)	N/A	R\$25.00	\$8.50
1285	*	#154 KRR; NG; XFine; (PV/20100)	N/A	R\$20.00	\$5.00
<b>HAWAIIANA</b>					
1286	O	US #648 On FDC; Dated "AUG 13, 1928" (KSS/2098)	2019	\$22.50	\$5.00
1287	O	U377 Cover entire; "PACKET BOAT" from Honolulu to Hilo; Dated "1/13/1900"; Per "GAELIC"; J.D. Spreckels & Co., S.F., green oval handstamp on reverse; Hilo back stamp; Small stain on front (RT/2099)	N/A	N/A	\$75.00
1288	O	#283 On cover; Honolulu to San Francisco; Dated "JAN 31, 1901" Registered; Per "S.S. Zealandia"; Red wax seal on reverse (RT/2099)	N/A	N/A	\$60.00
1289	**	Pineapple post (Cinderella); Captain Cook "Discovery of Hawaii"; Tete-beche pair; 1978; Vfine (KSS/2098)	N/A	N/A	\$5.00

**AND WE ARE PAU!**

# HAWAII

**STAMPS, COVERS, PROOFS, ESSAYS  
BUYING & SELLING**



**Hawaii #78, Gutter Specimen Block  
12 Cent Blue, 1894, World Class Rarity**

**PACIFIC MIDWEST CO.**

**P.O. Box 730818**

**San Jose, CA 95173**

**408-532-7100**

**EMAIL: GARYUCB@AOL.COM**

**WE ARE A WORLD CLASS HAWAIIAN DEALER**

**ASDA APS HAWAIIAN PHILATELIC SOCIETY CHINA STAMP SOCIETY**



1280



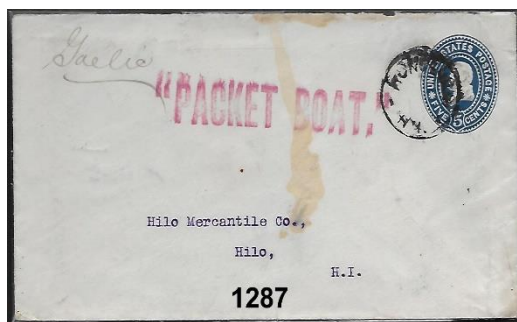
1281



1282



1283



1287



1288



1284



1285



1289

# WE SELL

# Hawaii!!

**OUR WEBSITE OF HAWAII ONLY:**

**www.vogtstamps.com**

Stamps, Covers, Postcards, Flight Covers, Documents, Coins, Currency, Paper Ephemera, Autographs, Memorabilia, Photographs, Kahului Railroad. **In short, nearly everything!**

**FROM RARITIES TO COMMON  
GEMS TO NOT  
(MANY NOT ON THE MARKET  
FOR HALF A CENTURY!)**



### Rare 66C Block



### Honolulu Straight Line Cancel

# VOGT STAMPS – HAWAII

650-344-3401 phone  
650-401-5530 fax  
vogtstamps@aol.com

