



# HAWAIIAN PHILATELIC SOCIETY



Affiliate #136

P.O. Box 10115, Honolulu, HI 97816-0115 USA

Organized 1911

Twitter: @hawaiianstamps

Website: [HPShawaii.com](http://HPShawaii.com)

Email: [hiphilsoc@gmail.com](mailto:hiphilsoc@gmail.com)

## JULY 2021

President: Wayne Yakuma; 1st Vice-President: Glenn Yokoyama; 2nd Vice-President: Kay Kimura; Treasurer: Jerry C. Coiner; Secretary: Phillip C. Mendel; Auctioneer: Ben Gale; APS Representative: Phillip C. Mendel; Po'Oleka O Hawaii Editor: Gregory Chang; Membership Chair: Gannon Sugimura; Bulletin Meister: Richard Yanagi; WESTPEX 2022 Liaison: Howard Kadohiro

### CALENDAR OF FUTURE EVENTS

July 12, 2021	HPS Executive Board Meeting	Board meeting at 1PM/HST via Zoom
July 12, 2021	HPS Auction	Auction to be conducted by mail-in using USPS/Email/Website
July 30-August 1, 2021	WESTPEX 2021	Burlingame, CA – SF Airport Marriott Waterfront Hotel
August 9, 2021	HPS Executive Board Meeting	Board meeting at 1PM/HST via Zoom
August 9, 2021	HPS Auction	Auction to be conducted by mail-in only via USPS/Email/Website

- ① **SESCAL 2021** – Mea culpa for wrong SESCAL 2021 info. There will **NOT** be a show this year per Fred Gregory in a memo to the Society. Mahalo to Fred for clarification. We look forward to 2022.
- ② **WESTPEX 2021** – Scheduled for July 30-August 1, 2021. Mark your calendars and join the Society for a “Meet & Greet” on Friday, July 30<sup>th</sup> from 4:00–6:00PM in the Bayside 1 Room. We are fortunate to have as our guest speaker Dennis Jackson, who will be presenting “*Hawaiian Postal Cards 1881-1900*”. Additionally, the Society will celebrate its 110-year anniversary with *free* cached envelopes for attendees.
- ③ **WESTPEX 2022** – Howard Kadohiro is representing the Society as a “Guest Society” at WESTPEX 2022, which is scheduled for April 22-24 in Burlingame. The Society will be responsible for providing a minimum of 35 frames for the exhibition at WESTPEX. Members interested in exhibiting should contact Howard at [chuutohampa@yahoo.com](mailto:chuutohampa@yahoo.com) for more information. The Board has approved the concept of providing stipends to encourage participation. The exact amount has not been established as of this printing.
- ④ **Auction Lots Needed** – Did you notice this month’s auction consists of 55 lots? The Auctioneer needs lots for future auctions. Auction lot and summary pages can be printed from the Society’s website [www.HPShawaii.com](http://www.HPShawaii.com) or requested by email at [hiphilsoc@gmail.com](mailto:hiphilsoc@gmail.com) or by USPS mail through the PO Box. For more info, contact Ben Gale, Auctioneer at [jnbgale@hawaii.rr.com](mailto:jnbgale@hawaii.rr.com).
- ⑤ **Mahalo nui loa** – Thanks to DOUGLAS MOSS and TOM ROY for donating stamps to HPS for postage. The Society continues to need stamps for use as postage on the monthly Bulletin and Po'Oleka. Should you be interested in selling or know a source for high-value stamps for postage, please contact the Auctioneer at [jnbgale@hawaii.rr.com](mailto:jnbgale@hawaii.rr.com).
- ⑥ **442<sup>nd</sup> Cached Envelope** – Jerry Coiner, Treasurer, has designed and printed an HPS cache celebrating issuance of “Go For Broke” stamp. Each envelope will be a First Day of Issue. It will be offered for purchase (\$3.00 each) at the “Meet & Greet” or on request to HPS (\$3.00 + 55c mailing).

CONTINUED ON PAGE #2

⑦ **First Day and Commemorative covers** – Speaking of covers, remember, there are numerous past issues available on the HPS website ([www.hpshawaii.com](http://www.hpshawaii.com)) at bargain prices

⑧ **New Bid Board - University Coins & Collectibles** – Honolulu has another bid board located at 2570 S. Beretania, Unit #103. Business hours are 11-5PM daily (except Sunday) and the Board closes Saturday at 2PM. Mr. Keali'i Lum is reported to be the owner. Mahalo to Tony Polanski and Glenn Yokoyama for the notice.

⑨ **Honolulu Coin, Stamp & Collectibles** – It is reported this bid board is moving to a new location in the next couple of months. More as details become available.

⑩ **COVID -19 Update** – With the mounting changes, the HPS Board has discussed holding in-person General Meetings and Auctions on the 2nd Monday each month starting September. More details as available.

LOT #	* / O	DESCRIPTIONS: (####) = VENDOR CODE; (*) = UNUSED; (O) = USED; (**) = UNUSED/NEVER HINGED; (OG) = ORIGINAL GUM; (DG) = DISTURBED GUM	CAT YEAR	CAT or RETAIL	UPSET
<b>UNITED STATES OF AMERICA</b>					
0700	**	#295 F-Vfine; OG; NH; w/selvage and partial inscription in red (BRG/2150)	2020	\$37.50	\$18.50
0701	*	#525 Vfine; OG; LH; W/Plt #9496 at top; Rounded bottom right corner (BRG/2150)	2020	\$2.50	\$1.00
0702	**	#621 Vfine; OG; NH; w/selvage on right (BRG/2150)	2020	\$19.00	\$8.50
0703	*	#659 F-Vfine; OG; HR; 4 clear margins (BRG/2150)	2020	\$3.25	\$2.00
0704	*	#704+708+712 Priced w/o plate #'s; Fine; OG/DG; LH (BRG/2150)	2020	\$1.40	\$1.00
0705	O	#726 Single w/Plate #21110 On cover Commemorating FDR 1935 Inauguration; F-Vfine (BAH/2151)	2020	R\$5.00	\$2.00
0706	O	#739 F-VF on cover for "1st Official Lustig Sky Train Flight"; Aug 2, 1934 (BAH/2151)	2020	R\$10.00	\$1.00
0707	*	#751 S/S of 6; Vfine; OG; LH (BRG/2150)	2020	\$10.00	\$2.75
0708	**	#909-21 Vfine; OG; NH Complete set (BRG/2150)	2020	\$3.75	\$1.50
0709	**	#2483a Xfine; OG; NH; Face value=\$2.00 (BRG/2150)	2020	\$5.25	\$1.50
0710	**	#2838 S/S 10; Xfine; OG; NH (BRG/2150)	2020	\$17.00	\$4.25
0711	O	U527 Entire; Fine; Commemorating George Washington Bicentennial 1787-1932; Stain upper left corner (BAH/2151)	2019	\$35.00	\$3.50
0712	O	U694 Entire; Vfine; Postally used 4 Dec 2019 (BAH/2151)	2020	\$2.00	\$1.00
0713	O	UX27a Ad/card w/illustration for monogrammed "Filmy Lingerie" to Alpha Sigma Phi fraternity in Berkeley, CA (BAH/2151)	2019	\$R5.00	\$1.00
0714	**	RW45 Plate blk/4; Xfine; OG; NH (BRG/2150)	2020	\$40.00	\$15.00
0715	**	RW46 corner single; Xfine; OG; NH (BRG/2150)	2020	\$12.50	\$3.50
0716	**	RW55 Plate blk/4; Xfine; OG; NH (BRG/2150)	2020	\$70.00	\$22.50
<b>HAWAII</b>					
0717	O	#10R Counterfeit; Postally cancelled; Vfine (BRG/2150)	N/A	R\$25.00	\$5.00
0718	O	#33 (9) All used and range from Average-Fine (MBW/2153)	2020	\$90.00	\$10.50
0719	O	#35 (7) All used; Some on piece; Average-Fine (MBW/2153)	2020	\$21.00	\$6.50

**SUPPORT OUR ADVERTISERS DURING THIS PANDEMIC – THEY NEED OUR SUPPORT**







LOT #	* / O	DESCRIPTIONS: (####) = VENDOR CODE; (*) = UNUSED; (O) = USED; (**) = UNUSED/NEVER HINGED; (OG) = ORIGINAL GUM; (DG) = DISTURBED GUM	CAT YEAR	CAT or RETAIL	UPSET
0720	O	#36 (2) F-Vfine; Both with clear margins (MBW/2153)	2020	\$65.00	\$18.50
0721	O	#38 (7) Average-Fine; 3 on piece (MBW/2153)	2020	\$332.50	\$75.00
0722	**	#37 Vfine; OG; NH; Toned spot (MBW/2153)	2020	\$27.50	\$11.50
0723	O	#42 (2) Fine; 1 on piece (MBW/2153)	2020	\$4.00	\$1.00
0724	O	#43 (18) Fine+; 11 on piece (MBW/2153)	2020	\$18.00	\$6.50
0725	O	#52 Vfine; Partial margin inscription in selvage on right; Light crease (MBW/2153)	2020	\$1.50	\$2.00
0726	O	#52 (2) Fine; 1 on piece (MBW/2153)	2020	\$1.50	\$1.00
0727	*	#55 (6) F-Vfine (MBW/2153)	2020	\$12.00	\$4.50
0728	*	#56 F-Vfine; OG; HR; "3892" stamped on back (MBW/2153)	2020	\$12.50	\$3.00
0729	*	#57 Vfine; DG; LH (MBW/2153)	2020	\$2.00	\$0.50
0730	O	#62 Fine; Red cancel (BRG/2150)	2020	\$20.00	\$2.00
0731	O	#67 (2) F-Vfine (MBW/2153)	2020	\$3.00	\$1.00
0732	* / O	#66 (5=* / 1=O) Fine; NG; LH (MBW/2153)	2020	\$30.00	\$9.50
0733	*	#70 Fine; DG; LH; Short perfs (MBW/2153)	2020	\$27.50	\$5.00
0734	O	R2 F-Vfine; PAID cancel (GY/2154)	2017	\$20.00	\$8.00
0735	O	R11 F-Vfine; Includes partial stamp at bottom; on piece (GY/2154)	2017	\$9.00	\$3.00
<b>HAWAII TOWN POSTMARKS</b>					
0736	O	#75 HANALEI, kauai; POINP #253.01; Purple; R5; Fine (GY/2154)	2017	\$0.60	\$5.00
0737	O	#75 hanaPEPE, Kauai; POINP #281.013; Purple; R5; Fine (GY/2154)	2017	\$0.60	\$3.00
0738	O	#81 1=Pair + 1 Single; HOLualoa; POINP #253.9a1; F-Vfine (HH/2152)	2017	\$3.00	\$10.00
0739	O	#74 honouliULI, oahu; POINP #253.02; Purple; R7; Fine (GY/2154)	2020	\$1.50	\$3.00
0740	O	#75 On piece; KEALIA, KAUAI; POINP #282.011; Purple; R9; Poor (GY/2154)	2020	\$0.60	\$3.00
0741	O	#81 KEKAHA, Kauai; POINP #253.04; Black; R7; Fine (GY/2154)	2020	\$1.00	\$3.00
0742	O	#75 Pair on piece KILAUEA, Kauai; POINP #282.011; Purple; R7; Poor (GY/2154)	2020	\$1.20	\$3.00
0743	O	U2 Cut square KOHALA, HAWaai; POINP #282.011; Purple; R8; F-Vfine (GY/2154)	2020	\$4.00	\$3.00
0744	O	#81 On piece KOLOA, KAUAI; POINP #282.011; Black; R8; F-Vfine (GY/2154)	2020	\$1.00	\$5.00
0745	O	#75 LAUPAHOehoe, HAWaai; POINP #281.01; Purple; R7; F-Vfine (GY/2154)	2020	\$0.60	\$5.00
0746	O	#75 (5) + #81 (3) mAKAWELI, kauai; POINP #255.9a1; Scarcity 3; F-Vfine (HH/2152)	2018	\$6.00	\$10.00
0747	O	#75 On piece; MAKAWELI, KAUai; POINP #282.013; Red; R5; Vfine (GY/2154)	2020	\$0.60	\$5.00
0748	O	#81 On piece; WAIALUA, oahu; POINP #281.01; Purple; R5; Fine (GY/2154)	2020	\$1.00	\$3.00





0720



0721



0722



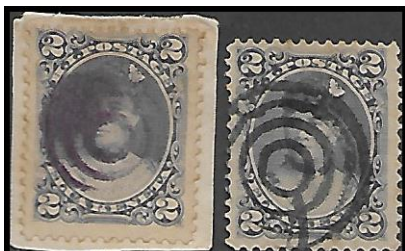
0723



EX 0724



0725



0726



0727



0728



0729



0730



0731



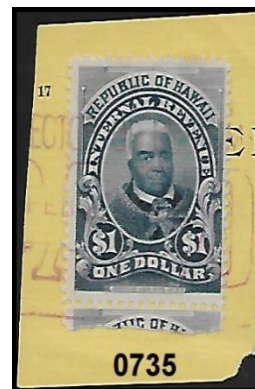
EX 0732



0733



0734



0735



0736



0737



EX 0738



0739



0740



0741



0742



0743



0744



0745



EX 0746



0747



0748



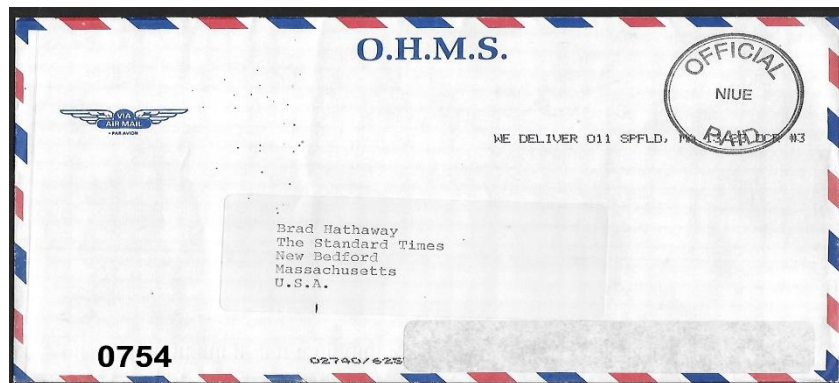
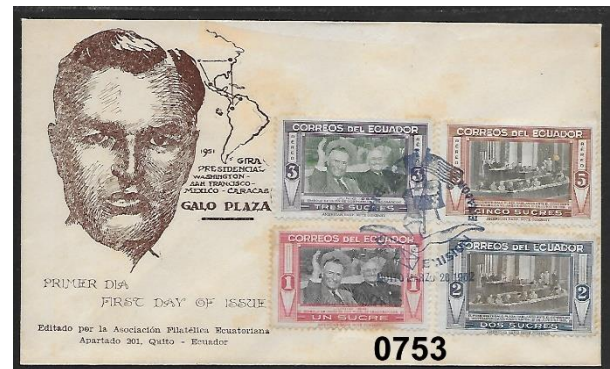
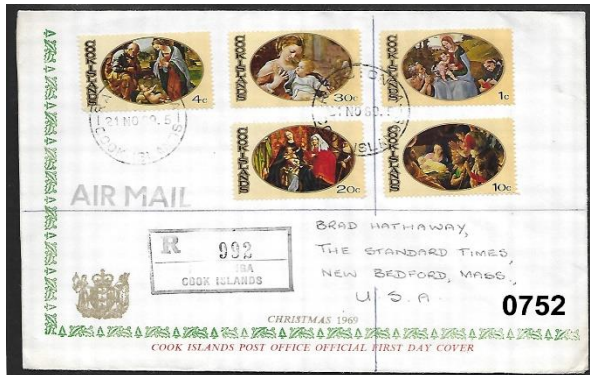
LOT #	* / O	DESCRIPTIONS: (####) = VENDOR CODE; (*) = UNUSED; (O) = USED; (**) = UNUSED/NEVER HINGED; (OG) = ORIGINAL GUM; (DG) = DISTURBED GUM	CAT YEAR	CAT or RETAIL	UPSET
0749	O	U2 Entire; WAILUKU, MAUI; POINP #281.011; Purple (but looks black); R9; F-Vfine; Backstamp Honolulu July 9, 1893 (GY/2154)	2020	\$17.50	\$6.00
0750	O	#81 Strip/3 + strip/2 WAIMEA, Kauai; POINP #255.01; R6; F-Vfine (HH/2152)	2018	\$5.00	\$1.00
0751	O	#75 On piece WAIMEA, KAUAI; POINP #282.011; Purple; R9; F-Vfine (GY/2154)	2020	\$0.60	\$3.00
<b>COOK ISLANDS</b>					
'0752	O	#268-72 Blk/5 Vfine on registered FDC to Massachusetts; Backstamp Bedford, Mass, dtd NOV 29, 1969 (BAH/2151)	2017	\$1.25	\$1.00
<b>ECUADOR</b>					
0753	O	#558-9 + C231-32 on First Day of Issue; Cache w/Premier Galo Plaza; Distributed by Philatelic Association of Ecuador (BAH/2151)	2017	\$3.70	\$1.00
<b>NIUE</b>					
0754	O	OHMS #10 Entire, stampless (Official mail cancel) w/Springfield MA overcancel; F-Vfine (BAH2151)	N/A	N/A	\$1.00
<b>PHILLIPINES</b>					
0755	O	#226, 259, 278A, 296, 300, 303 (6) F-Vfine (BRG/2150)	2017	\$11.00	\$1.50

**AND WE ARE PAU!**

An individual Membership fee for the Society is \$24.00 per year (Oct-Sep). Payable on October 1<sup>st</sup> of the current year. Membership includes a mailed hard copy, or e-copy if requested, of the monthly Bulletin/Auction and a mailed hard copy of the Society's Po'Oleka Journal (twice yearly). International membership is \$24.00/year for an e-copy of the monthly Bulletin/Auction and a mailed hard copy of the Po'Oleka Journal (twice yearly). International members requesting a hard copy of the monthly journal and a mailed copy of the Po'Oleka (twice yearly) are subject to a \$40.00 per year membership fee. Pro-rated, Life, Spouse and Junior membership fees are detailed on the Society's website [www.hps-hawaii.com](http://www.hps-hawaii.com). At this time, only checks are accepted for payment.

**Results of the June 14, 2021 Auction—Lots not listed are passed lots**

0601-\$9.00; 0602-\$30.00; 0604-\$24.50; 0605-\$4.75; 0607-\$25.00; 0608-\$12.00; 0609-\$55.00; 0610-\$5.00; 0613-\$10.00; 0614-\$9.50; 0618-\$3.00; 0620-\$21.50; 0622-\$9.50; 0623-\$7.50; 0624-\$1.75; 0626-\$5.50; 0628-\$12.00; 0630-\$5.00; 0631-\$4.00; 0632-\$6.00; 0633-\$6.00; 0634-\$22.00; 0635-\$8.50; 0636-\$6.50; 0638-\$10.00; 0639-\$8.00; 0640-\$12.50; 06450-\$15.00; 0646-\$5.00; 0650-\$10.00; 0652-\$2.50; 0653-\$8.50; 0654-\$100.00; 0655-\$4.00; 0656-\$8.50; 0657-\$1.00; 0658-\$3.25; 0659-\$6.50; 0660-\$1.00; 0661-\$8.50; 0662-\$3.25; 0663-\$1.00; 0664-\$1.00; 0667-\$3.00; 0668-\$4.75; 0670-\$3.00; 0671-\$5.00; 0672-\$25.00; 0673-\$9.50; 0674-\$7.50; 0676-\$6.50; 0677-\$6.50; 0678-\$8.50; 0679-\$12.50; 0680-\$9.00; 0683-\$3.00; 0684-\$5.50; 0686-\$7.00; 0687-\$5.00; 0688-\$5.50; 0689-\$2.25; 0690-\$13.50; and 0691-\$26.00





Vogt Stamps Offer Members 20% Discount and Time Payments are Available

# WE SELL *Hawaii!!*

OUR WEBSITE OF HAWAII ONLY:  
**[www.vogtstamps.com](http://www.vogtstamps.com)**

Stamps, Covers, Postcards, Flight Covers, Documents, Coins, Currency, Paper Ephemera, Autographs, Memorabilia, Photographs, Kahului Railroad. **In short, nearly everything!**

**FROM RARITIES TO COMMON  
GEMS TO NOT  
(MANY NOT ON THE MARKET  
FOR HALF A CENTURY!)**



Rare 66C Block



Honolulu Straight Line Cancel

# VOGT STAMPS - HAWAII

650-344-3401 phone  
650-401-5530 fax  
[vogtstamps@aol.com](mailto:vogtstamps@aol.com)



# **HAWAII**

***STAMPS, COVERS, PROOFS, ESSAYS***  
**BUYING & SELLING**



**Hawaii #78, Gutter Specimen Block**  
**12 Cent Blue, 1894, World Class Rarity**

**PACIFIC MIDWEST CO.**

**P.O. Box 730818**

**San Jose, CA 95173**

**408-532-7100**

**EMAIL: GARYUCB@AOL.COM**

***WE ARE A WORLD CLASS HAWAIIAN DEALER***

***ASDA APS HAWAIIAN PHILATELIC SOCIETY CHINA STAMP SOCIETY***

