



HAWAIIAN PHILATELIC SOCIETY



Affiliate #136

P.O. Box 10115, Honolulu, HI 97816-0115 USA

Organized 1911

Twitter: @hawaiianstamps

Website: HPShawaii.com

Email: hiphilsoc@gmail.com

SEPTEMBER 2021

President: Wayne Yakuma; 1st Vice-President: Glenn Yokoyama; 2nd Vice-President: Kay Kimura; Treasurer: Jerry C. Coiner; Secretary: Phillip C. Mendel; Auctioneer: Ben Gale; APS Representative: Phillip C. Mendel; Po'Oleka O Hawaii Editor: Gregory Chang; Membership Chair: Gannon Sugimura; Bulletin Meister: Richard Yanagi; WESTPEX 2022 Liaison: Howard Kadohiro

ANNUAL MEMBERSHIP FEES ARE DUE OCTOBER 1, 2021

Remember to renew your annual Membership Fee before October 1, 2021. As in the past, dues are \$24.00 payable by check mailed to the P.O. Box listed in the masthead above. International Member fees are detailed on the HPS website www.hpshawaii.com or see page #9 of this Bulletin for details. Your prompt cooperation is greatly appreciated. Mahalo.

- ① E KOMO MAI – Aloha to new Members: Robert L. Brownell, Carmel, CA and Corrie Leisen, Santa Rosa, CA
- ② SEPTEMBER GENERAL MEMBER MEETING – Beginning on Monday, September 13th, the Society's General Member meeting will be held from 6:30-8:30PM/HST at the St. Louis Alumni Association Club, 925 Isenberg St., Honolulu. The September Auction will be called immediately following the General Meeting. All are welcome to attend. If you are not attending, but wish to bid in the auction, please submit your bids by email/on the website/USPS (remember to mail early).
- ③ SEPTEMBER BOARD MEETING – will continue as a Zoom meeting on Monday, September 13th from 1-3:00PM/HST.
- ④ WESTPEX 2021 NOTES – 18 people attended the "Meet & Greet", which is a good number considering attendance at WESTPEX was down slightly.....but word on the street says, "sales were good". Dennis Jackson's presentation, accompanied by a printed booklet, was well received. A big mahalo nui loa to those who volunteered and looking forward to more in the future. Guests were provided chocolate covered macadamia nuts and servings of the HPS 110th Anniversary cake. More details and photos of the "Meet & Greet" will be published in the next edition of the Po'Oleka.
- ⑤ WESTPEX 2022 APRIL 22-24 – HPS has requested to be a Guest Society and Howard Kadohiro has volunteered to Chair this project. Anyone interested in assisting Howard can contact him directly at 808-952-9899 or chuutohampto@yahoo.com. To encourage exhibitors, an award for the best HPS Exhibit has been established and will be presented at the show. A budget has also been approved to provide grants to exhibitors. Awarding of these grants will be on a first come/first served basis. Grants range from \$40.00 for a 1-3 frame exhibit to \$100.00 for a 9-10 frame exhibit. Requests received after the monies have been exhausted will be put on a wait list. Contact Howard for more details if interested in being an exhibitor.
- ⑥ UNIVERSITY COINS & COLLECTIBLES – The newest bid board in Honolulu is located at 2570 S. Beretania St., Ste. 103, phone 808-949-5781 for details. Open Monday-Saturday 11:00AM – 5:00PM.

Results of the July 12, 2021 Auction—Lots not listed are passed lots

0700-\$27.50; 0701-\$1.00; 0702-\$11.00; 0703-\$3.00; 0704-\$1.50; 0708-\$2.25; 0710-\$4.25; 0713-\$1.00; 0717-\$5.00; 0718-\$10.50; 0720-\$18.50; 0722-\$16.00; 0723-\$1.00; 0729-\$1.00; 0730-\$2.00; 0734-\$8.00; 0735-\$4.25; 0736-\$5.00; 0739-\$3.00; 0740-\$3.00; 0742-\$3.00; 0743-\$3.00; 0744-\$5.00; 0747-\$5.00; 0749-\$14.00; 0750-\$1.00; 0751-\$3.00; 0755-\$1.75

LOT #	* / O	DESCRIPTIONS: (####) = VENDOR CODE; (*) = UNUSED; (O) = USED; (**) = UNUSED/NEVER HINGED; (OG) = ORIGINAL GUM; (DG) = DISTURBED GUM	CAT YEAR	CAT or RETAIL	UPSET
UNITED STATES OF AMERICA					
0901	O	#72 Average; Thin (SAI/2160)	2020	\$600.00	\$37.50
0902	**	#230 F-Vfine; OG; NH; Short perfs (BAH/2156)	2019	\$32.50	\$6.00
0903	*	#285 F-Vfine; Slightly disturbed gum; NH; Small tear on right margin (BAH/2156)	2019	\$70.00	\$2.00
0904	*	#295 Fine OG; HR; Center high (BRG/2155)	2020	\$15.00	\$6.00
0905	*	#295 (2) Fine; 1 = NG and 1 = gum w/hinge remnant; Color varieties (BAH/2156)	2019	\$30.00	\$3.00
0906	*	#299 F-Vfine; OG; HR; Thin (BRG/2155)	2020	\$115.00	\$35.00
0907	*	#314 Vfine; OG; HR (BRG/2155)	2020	\$14.00	\$5.00
0908	*	#320 F-Vfine; OG; HR (BRG/2155)	2020	\$15.00	\$5.00
0909	*	#324 Vfine; OG; HR; Natural straight edge (BRG/2155)	2020	\$22.50	\$6.50
0910	*	#397 Vfine; OG; Very light HR (possibly paper adhesion) (BRG/2155)	2020	\$15.00	\$4.00
0911	*	#399 Vfine; OG; HR; Paper adhesion (BRG/2155)	2020	\$10.00	\$2.50
0912	**	#488 Fine; OG; NH; Joint line @top (BAH/2156)	2019	\$6.50	\$3.00
0913	**	#506 Fine; OG; NH Single w/plate #; Minor perf separation @bottom (BAH/2156)	2020	\$25.00	\$7.00
0914	*	#506 Vfine; OG; HR; Nice centering (BRG/2155)	2020	\$11.00	\$6.50
0915	*	#668 F-Vfine; OG; HR; Good color for this stamp (BRG/2155)	2020	\$12.50	\$3.50
0916	**	#756-65 F-Vfine; NG - as issued; NH (SAI/2160)	2020	\$15.50	\$2.25
0917	**	#804b F-Vfine; OG; NH 1¢ booklet pane (SAI/2160)	2020	\$2.00	\$1.00
0918	**	#806b Fine; OG; NH (SAI/2160)	2020	\$4.75	\$2.00
0919	**	#807a F-Vfine; OG; NH (SAI/2160)	2020	\$8.50	\$3.50
0920	**	#829 Pltblk/4 F-Vfine; Fresh full OG; NH; Minor bend LL margin (SAI/2160)	2020	\$5.50	\$3.50
0921	**	#832 Vfine; OG; NH (BRG/2155)	2020	\$7.00	\$2.00
0922	*	#843 Line pair; Fine; OG; HR (SAI/2160)	2020	\$27.50	\$4.25
0923	**	#845 Joint line pair; Fine; OG; NH (SAI/2160)	2020	\$27.50	\$5.75
0924	*	#846 Joint line pair; Vfine; OG; HR; Well centered (SAI/2160)	2020	\$7.50	\$3.00
0925	**	#1041B Pltblk/4 Vfine; OG; NH (SAI/2160)	2020	\$4.25	\$1.75
0926	**	#1056 Joint line pair; Fine; OG; NH; 1 pulled perf (SAI/2160)	2020	\$3.50	\$1.00
0927	**	#1059 Joint line pair; F-Vfine; OG; NH; Fresh (SAI/2160)	2020	\$14.00	\$2.75
0928	**	#1054Ab Joint line pair "Shiny gum"; Vfine; OG; NH (SAI/2160)	2020	\$12.00	\$2.50
0929	**	#1299b Imperf pair error; Vfine; OG. NH (SAI/2160)	2020	\$22.50	\$5.50
0930	**	#1625a Imperf pair error; Vfine; OG; NH (SAI/2160)	2020	\$20.00	\$6.00

Results of the August 9, 2021 Auction – Lots not listed are passed lots

0801-\$45.00; 0803-\$15.00; 0804-\$225.00; 0806-\$300.00; 0809-\$30.00; 0810-\$60.00; 0813-\$90.00; 0815-\$265.00; 0816-\$200.00; 0817-\$170.00; 0818-\$300.00; 0822-\$25.00; 0825-\$1.00; 0827-\$1.00; 0828-\$11.00; 0829-\$0.50; 0830-\$5.00; 0832-\$1.00; 0833-\$3.25; 0838-\$37.50; 0839-\$7.50; 0840-\$4.25; 0841-\$3.25; 0842-\$2.25; 0843-\$22.00; 0844-\$5.00; 0846-\$3.75; 0847-\$2.75; 0848-\$4.75; 0849-\$6.00



0901



0902



0903



0904



0905



0906



0907



0908



0909



0910



0911



0912



0913



0917



0918



0919



0914



0915



EX 0916



0920



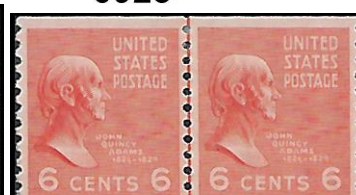
0921



0923



0922



0924



0925



0926



0927



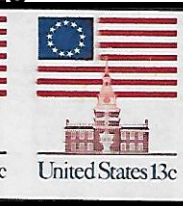
0928



0929



0930



LOT #	* / O	DESCRIPTIONS: (####) = VENDOR CODE; (*) = UNUSED; (O) = USED; (**) = UNUSED/NEVER HINGED; (OG) = ORIGINAL GUM; (DG) = DISTURBED GUM	CAT YEAR	CAT or RETAIL	UPSET
U.S. REVENUE					
0931	*	E7 Vfine; OG; HR (SAI/2159)	2020	\$65.00	\$12.00
0932	*	F1 F-Vfine; OG; NH (hinge on perfs between stamp/selvage); F-Vfine; W/partial inscription at top (SAI/2159)	2020	\$80.00	\$16.00
0933	*	JQ2 Fine; OG; HR (SAI/2159)	2020	\$65.00	\$10.00
0934	*	O2-S F-Vfine; NG; "SPECIMEN" (SAI/2157)	2020	\$55.00	\$6.25
0935	*	O25-S Fine; NG; Rough perfs on right (SAI/2157)	2020	\$32.50	\$3.75
0936	**	PS1 Fine; OG; NH; Short perfs @ top (SAI/2157)	2020	\$17.50	\$1.75
0937	*	PS6 F-Vfine; OG; HR (SAI/2157)	2020	\$3.00	\$1.00
0938	**	Q1 Fine; Full original gum; NH (SAI/2159)	2020	\$14.00	\$2.75
0939	**	Q2 Fine-Vfine; Super fresh OG; NH; Natural straight edge (SAI/2159)	2020	\$12.50	\$2.25
0940	*	Q5 Fine; OG; HR; Pretty stamp (SAI/2159)	2020	\$32.50	\$5.25
0941	*	Q6 Fine OG; HR (SAI/2159)	2020	\$42.50	\$6.50
0942	*	Q9 F-Vfine; NG (SAI/2157)	2020	\$57.50	\$5.25
0943	*	Q11 F-Vfine; OG; Very LH (SAI/2157)	2020	\$80.00	\$9.50
0944	*	RS 274 F-Vfine; NG (BAH/2156)	2019	\$2.25	\$2.00
0945	O	R35a Average; Light pen cancel (SAI/2159)	2020	\$14.00	\$2.75
0946	O	R37b Fine; Light manuscript cancel (SAI/2159)	2020	\$30.00	\$3.75
0947	O	R39 Vfine; Very light manuscript cancel (SAI/2159)	2020	\$17.50	\$4.00
0948	O	R60d Fine; Silk paper (SAI/2159)	2020	\$7.50	\$1.75
0949	O	R65 Average; Light commercial handstamp (SAI/2159)	2020	\$14.00	\$3.25
0950	O	R66 Average; Light manuscript cancel (SAI/2159)	2020	\$27.50	\$4.75
0951	O	R74a Vfine; Handstamp "Adolph Low & Co. JUL 10, 1866, San Francisco"; Sound stamp (SAI/2159)	2020	\$350.00	\$45.00
0952	O	R80 Vfine; Faint crease LR corner; Tiniest pin hole; VF appearance (SAI/2159)	2020	\$200.00	\$20.00
0953	O	R86 Fine; Rich color; Light manuscript cancel (SAI/2157)	2020	\$55.00	\$10.50
0954	O	R90 Vfine; Tear at right; Oval bank handstamp in blue "OCT 15, 1867" (SAI/2157)	2020	\$120.00	\$12.50
0955	O	R95 Fine; 2 small cuts in left margin (SAI/2157)	2020	\$40.00	\$3.25
0956	*	R352 F-Vfine; NG (SAI/2157)	2020	\$37.50	\$4.50
0957	*	R399 F-Vfine; NG (SAI/2157)	2020	\$15.00	\$4.00
0958	*	R498 F-Vfine; NG (SAI/2157)	2020	\$10.00	\$2.75
0959	*	R643 Fine; NG; Series 1953 (SAI/2157)	2020	\$60.00	\$12.00
0960	*	11T 1-4 Fine; OG; HR (SAI/2157)	2020	\$40.00	\$9.00
0961	*	WS1 F-Vfine; NG; WWI Savings stamp (SAI/2157)	2020	\$16.00	\$2.25



0931



0932



0933



0934



0935



0936



0937



0938



0939



0940



0941



0942



0943



0944



0945



0946



0947



0948



0949



0950



0951



0952



0953



0954



0955



0956



0957



0958



0959



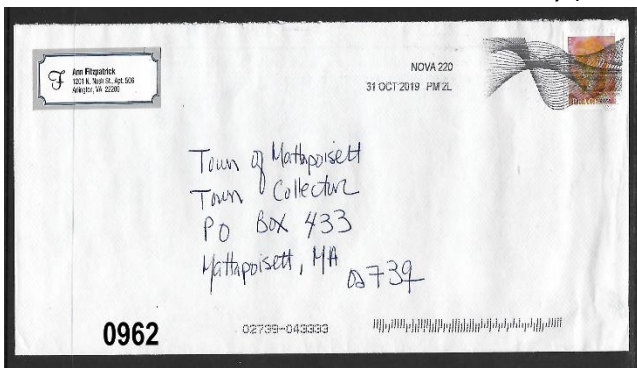
EX 0960



0961

LOT #	* / O	DESCRIPTIONS: (####) = VENDOR CODE; (*) = UNUSED; (O) = USED; (**) = UNUSED/NEVER HINGED; (OG) = ORIGINAL GUM; (DG) = DISTURBED GUM	CAT YEAR	CAT or RETAIL	UPSET
0962	O	Experimental cancel on cover postally used (BAH/2156)	N/A	N/A	\$1.00
		HAWAII			
0963	O	#39 f-Vfine (BAH/2156)	2019	\$3.00	\$1.00
0964	*	#53 F-Vfine OG; HR (BAH/2156)	2019	\$9.00	\$2.00
		HAWAII TOWN POSTMARKS			
0965	O	#74 HAMAKUAPOKU, mau; POINP #281.011; R9; Black; Fine (SAI/2158)	2020	\$1.50	\$2.50
0966	O	#75 HANA, Maui; POINP #255.01; R5; Purple; Vfine (SAI/2158)	2020	\$0.60	\$3.50
0967	O	#81 HILO, HAWAII; POINP #271.035; R10; Black; SON; Fine (SAI/2158)	2020	\$1.00	\$2.75
0968	O	#81 Pair HONOLULU, oahu; POINP #231.82; R10; Black; Fine (SAI/2158)	2020	\$2.00	\$2.50
0969	O	#74 HONOLULU, H.I.; POINP #253.528; R10; Black; Fine (SAI/2158)	2020	\$1.50	\$2.25
0970	O	#75 HONOULIULI, oahu; POINP #253.02; R7 Purple; Average (SAI/2158)	2020	\$0.60	\$2.75
0971	O	#75 KAHUKU, oahu; POINP #253.02; r6; Purple; Vfine (SAI/2158)	2020	\$0.60	\$3.00
0972	O	#75 KILAUEA, Kauai; POINP #281.011; R7; Purple; Fine-Vfine (SAI/2158)	2020	\$0.60	\$2.75
0973	O	#81 kauNAKAKAI, molokai; POINP #281.01; R7; Black; Dated "APR 5, 1899"; Fine (SAI/2158)	2020	\$1.00	\$2.75
0974	O	#43 koHALA, haWAI; POINP #281.013; R6; Purple; Dated: "MAR 18, 1890"; Fine (SAI/2158)	2020	\$1.00	\$4.00
0975	O	#43 On piece laHAINa, mau; POINP #281.013; R6; Blue; Dated "AUG 7, 1888"; Vfine (SAI/2158)	2020	\$1.00	\$3.75
0976	O	#75 lauPAHOEHOE, hawaii; POINP #281.011; R7; Purple; F-Vfine (SAI/2158)	2020	\$0.60	\$3.00
0977	O	#75 LIHUE, kauai; POINP #253.01(I); R7 ; Purple; Dated "APR 2, 1897"; Fine (SAI/2158)	2020	\$0.60	\$2.75
0978	O	#75 MAHUKona, Hawaii; POINP #281.016; R6; Red; F-Vfine (SAI/2158)	2020	\$0.60	\$3.50
0979	O	#75 mANA, kual; POINP #282.012; R3; Purple; Stamp faulty but cancel scarce; Fine (SAI/2158)	2020	\$0.60	\$8.50
		AUSTRALIA			
0980	O	24 Different uncatalogued stamps; All appear to be used; Fine (BAH/2156)	N/A	N/A	\$15.00
0981	O	C3-4 F-Vfine (BAH/2156)	2017	\$22.00	\$2.50
		DOMINICA			
0982	**	#644-52 Xfine Mint; Never hinged (BAH/2156)	2017	\$4.25	\$1.00
		GREENLAND			
0983	O	65 different used stamps; All Vfine condition (BAH/2156)	2020	\$147.00	\$15.00
		JAPAN			
0984	**	Unique sheet of ration stamps; Fragile condition yet intact for the most part. A unique piece of history (BAH/2156)	N/A	N/A	\$1.00
		ST. THOMAS & PRINCE ISLAND			
0985	**	#475A-85A Xfine; Original gum; Never Hinged (BAH/2156)	2017	\$23.30	\$4.00

AND WE ARE PAU!



0963



0964



0965



0966



0967



0968



0969



0970



0971



0972



0973



0974



0975



0976



0977



0978



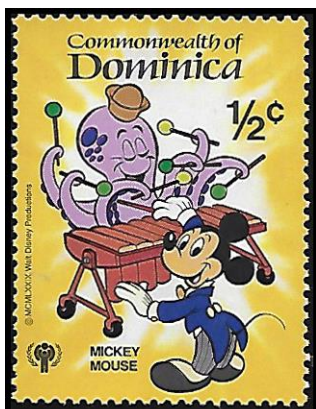
0979



EX 980



0981



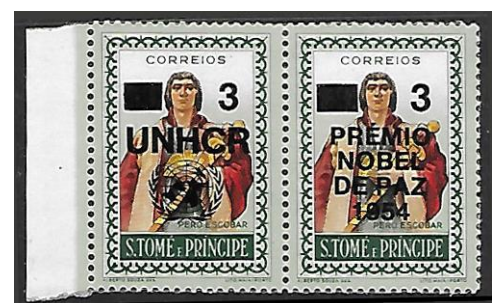
EX 982



0984



EX 983



EX 985

CALENDAR OF FUTURE EVENTS

September 13, 2021	HPS Executive Board Meeting	Zoom meeting 1:00-3:00PM/HST
September 13, 2021	HPS General Meeting/Auction	General meeting 6:30PM/HST @St. Louis Alumni Association Club House-called and mail auction to follow
October 1, 2021	Annual Membership Fees Due	See page #9 or website for more information
October 11, 2021	Executive Board Meeting	Zoom meeting 1:00-3:00PM/HST
October 11, 2021	General Meeting/Auction	General meeting 6:30PM/HST @St. Louis Alumni Association Club House-called and mail auction to follow
October 22-24, 2021	HSNA Coin Show	Hawaiian Convention Center
November 8, 2021	HPS Executive Board Meeting	Zoom meeting 1:00-3:00PM/HST
November 8, 2021	HPS General Meeting/Auction	General meeting 6:30PM/HST @St. Louis Alumni Association Club House-called and mail auction to follow

Vogt Stamps Offer Members 20% Discount and Time Payments are Available

WE SELL

Hawaii!!

OUR WEBSITE OF HAWAII ONLY:

www.vogtstamps.com

Stamps, Covers, Postcards, Flight Covers, Documents, Coins, Currency, Paper Ephemera, Autographs, Memorabilia, Photographs, Kahului Railroad. **In short, nearly everything!**

**FROM RARITIES TO COMMON
GEMS TO NOT
(MANY NOT ON THE MARKET
FOR HALF A CENTURY!)**



Rare 66C Block



Honolulu Straight Line Cancel

VOGT STAMPS - HAWAII

650-344-3401 phone
650-401-5530 fax
vogtstamps@aol.com

An individual Membership fee for the Society is \$24.00 per year (Oct-Sep). Payable on October 1st of the current year. Membership includes a mailed hard copy, or e-copy if requested, of the monthly Bulletin/Auction and a mailed hard copy of the Society's Po'Oleka Journal (twice yearly). International membership is \$24.00/year for an e-copy of the monthly Bulletin/Auction and a mailed hard copy of the Po'Oleka Journal (twice yearly). International members requesting a hard copy of the monthly bulletin and a mailed copy of the Po'Oleka (twice yearly) are subject to a \$40.00 per year membership fee. Pro-rated, Life, Spouse and Junior membership fees are detailed on the Society's website www.HPSHawaii.com. At this time, only checks are accepted for payment.

HAWAII

***STAMPS, COVERS, PROOFS, ESSAYS
BUYING & SELLING***



**Hawaii #78, Gutter Specimen Block
12 Cent Blue, 1894, World Class Rarity**

PACIFIC MIDWEST CO.

P.O. Box 730818

San Jose, CA 95173

408-532-7100

EMAIL: GARYUCB@AOL.COM

WE ARE A WORLD CLASS HAWAIIAN DEALER

ASDA APS HAWAIIAN PHILATELIC SOCIETY CHINA STAMP SOCIETY

Hawaiian Philatelic Society
P O Box 10115
Honolulu, Hawaii 96816-0115

I wish to submit the following bids for the Hawaiian Philatelic Society auction

held on: _____

Signature: _____

Print Name: _____ Date: _____

Address: _____ Telephone: _____

City: _____ State: _____ Zip: _____

[illegible]

Bidding Increments	
0.25 to 5.00 by 0.25	25.00 to 50.00 by 2.50
5.00 to 10.00 by 0.50	50.00 to 100.00 by 5.00
10.00 to 25.00 by 1.00	100.00 and up by 10.00

Must be a member to bid in the Auction.

HAWAIIAN PHILATELIC SOCIETY

P.O. Box 10115

Honolulu, Hawaii 96816-0115

ADDRESS SERVICE REQUESTED

